

CROSS COUNTRY
DIESEL MOTORHOMES 2005



CROSS COUNTRY
DIESEL MOTORHOMES 2005





The driver friendly custom designed dash features easy to read gauges and easy to reach controls.

Driving Excellence . . . Experience the power of a diesel motorhome in the well equipped Cross Country by Sportscoach®. The Cross Country is a state of the art motorhome built with the utmost attention to quality and detail, while still being offered at a very affordable price. Whether it is traveling across the country full time or taking the grand kids on a week long getaway, the Cross Country is built to exceed your expectations in every way.





The cockpit area of the Cross Country features a large flatscreen overhead television with optional surround sound, deluxe pilot seats with integrated three point seat belts and an ergonomically designed dash with easy to reach controls.



The deluxe 6-way power pilot seats feature 3-point seat belts with a shoulder harness that is integrated into the chair structure, rather than mounting the shoulder harness to the sidewall.



The overhead cockpit of the Cross Country boasts a large 27" flatscreen television with plenty of storage room for your videos and components. Smoked glass inserts on the cabinet doors allow you to use your component remotes without opening the doors.



The optional driver and passenger side powered sun visors give you the ultimate sun block and improved visibility at the touch of a conveniently located button.



The generous kitchen area found on the Cross Country is loaded with deluxe features like the wood edged countertops, a Moen faucet, optional side by side refrigerator, and a convenient silverware drawer, just to name a few.



All Cross Country Motorhomes feature extra deep kitchen sinks and a deluxe Moen kitchen faucet with a detachable sprayer head. A water purifying drinking faucet is also standard equipment.



The optional side-by-side refrigerator has plenty of door storage and shelf space for your food items. The freezer even has a built-in ice maker.



All drawers feature metal drawer guides with glide wheels to provide a friction free sliding drawer that is extremely durable. The drawer guides also act as a catch so that the drawer will not slide open during travel. Simply lift up and pull to open the drawers.



A second sink and vanity are conveniently located in the bedroom of the Cross Country 376DS. Medicine cabinet, extra towel ring and under sink storage are added functional features.



The bedroom of the Cross Country 370DS features a spacious slideout, designer wall sconces, a custom headboard and 20" flatscreen television.



The Stanford innerspring booth dinette is a standard feature on the Cross Country. This unique dinette is unparalleled in comfort and extremely durable with steel framing and hinged seats for easy access to the under booth storage (residential dinette with 4-chair option).

Fit for a King . . . Inside every Cross Country diesel motorhome you will see elegantly refined interior appointments that are truly fit for a king. From the plush residential furnishings to the user friendly features, the Cross Country is designed to cater to your every desire.



Commonly used switches and gauges are located into one convenient location above the entrance door. The command center includes the monitor panel, generator panel, water pump switch, water heater switch, tank heater switch and slideroom controls. The optional 600 watt inverter and energy management system controls are also located above the entrance door.





The interior of the Cross Country is loaded with features and luxurious residential appeal. All Cross Country Motorhomes boast flush floor sliderooms, kitchen faucet with pull out sprayer, hardwood countertop edges, Ashland Oak raised panel cabinetry, high line window treatments, a designer sofa and sculpted carpet. Options featured are the side-by-side refrigerator, residential dinette with four chairs, Euro chair with ottoman, and surround sound system.

Decor Selections...

A - Main B - Accent C - Bedspread



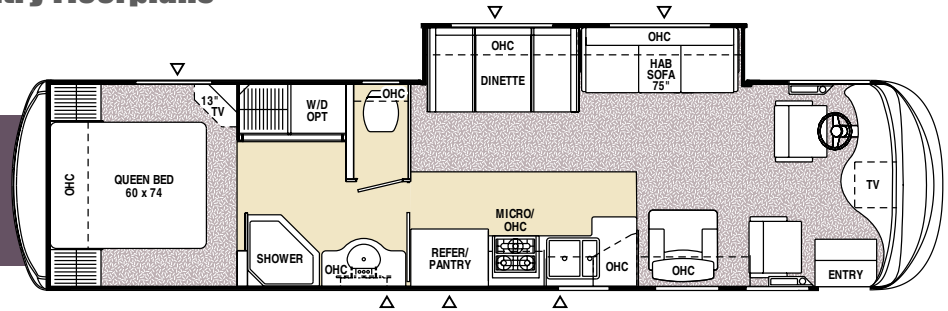
Exterior Appeal...



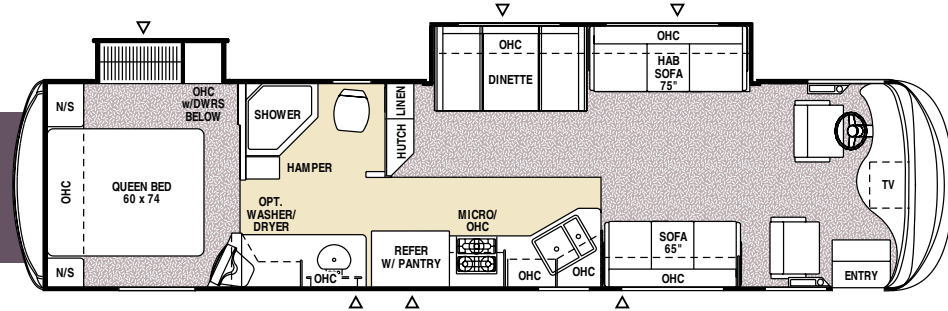
- A. The Sight Rite™ lower dash cowl is angled downward at 20 degrees for an increased line of sight that is closer to the front of the unit.
- B. No need to worry about maneuvering around a small gas station parking lot. Pull up to either side of the pump with dual fuel fills that are conveniently located on both sides of the unit.
- C. The No-Mess™ termination system is an easy to swivel boom arm located under the storage bay that provides a convenient storage location for the termination hose. Your storage bay stays cleaner and the hose can remain connected after use.
- D. The overhead mounted windshield wipers are mounted up high and out of the way to minimize any obstruction of view. They also offer superior water removal and a high line look.

Cross Country Floorplans

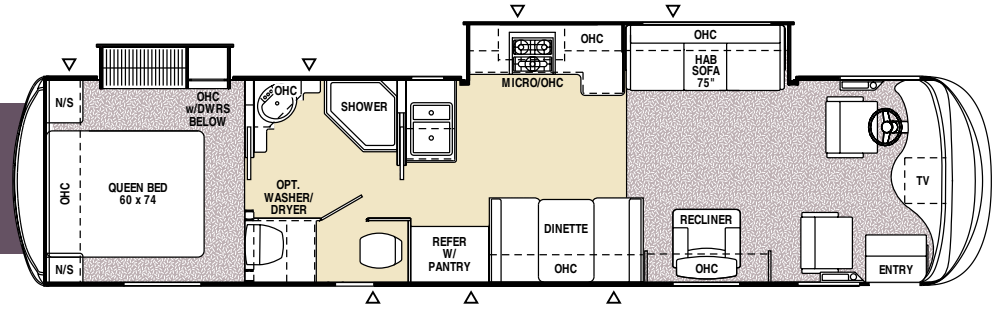
354MBS Mid Bath Slide Out



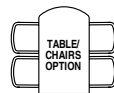
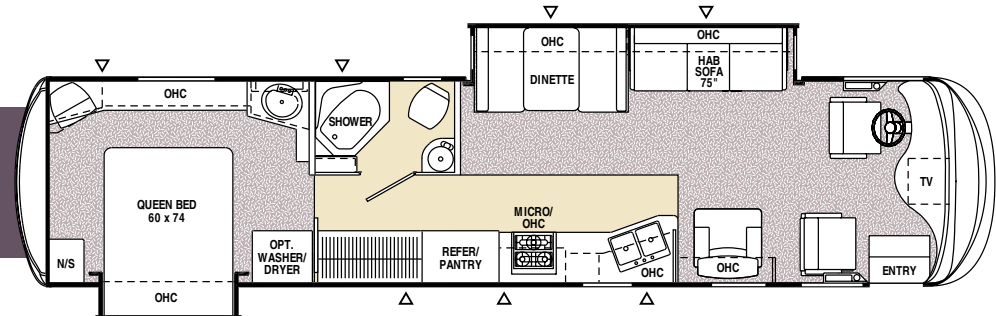
370DS Double Slide Out



372DS Double Slide Out



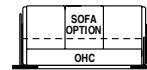
376DS Double Slide Out



Optional in all units



Optional only in the 354MBS



Optional only in the 372DS

INDICATES CARPETING

INDICATES OUTSIDE STORAGE LOCATION

2005 Cross Country Specifications

	Cross Country 354 MBS	Cross Country 370 DS	Cross Country 372 DS	Cross Country 376 DS
Chassis	Freightliner	Freightliner	Freightliner	Freightliner
Chassis Model	XC	XC	XC	XC
Engine Horsepower	300	300	300	300
Wheel Base	228"	228"	242"	242"
Rear Axle Ratio	4.78	4.78	4.78	4.78
Tire Size	235/80R22.5	235/80R22.5	235/80R22.5	235/80R22.5
GVWR (lbs.)	26,850	26,850	26,850	26,850
CW (lbs.)	20,285	21,088	21,427	21,352
GAWR Front (lbs.)	9,350	9,350	9,350	9,350
GAWR Rear (lbs.)	17,500	17,500	17,500	17,500
GCWR (lbs.)	33,000	33,000	33,000	33,000
Exterior Length	37'6"	37'6"	38'4"	38'4"
Exterior Height**	12'1"	12'1"	12'1"	12'1"
Exterior Width	8'6"	8'6"	8'6"	8'6"
Sleeping Capacity	5	5	5	4
Interior Width	96"	96"	96"	96"
Interior Height	79"	79"	79"	79"
Fuel Capacity (gal.)	90	90	90	90
Alternator Amps	160	160	160	160
Fresh Water Capacity (gal.)	80	80	80	80
Grey/Waste Water Capacity (gal.)	46/46	46/46	46/46	46/46
Water Heater Capacity (gal.)	6	6	6	6
LP Gas Capacity (lbs.)	174	174	174	174
Furnace Rating (x1000) BTU	40	40	40	40

** = Includes clearance for roof A/C

GVWR (Gross Vehicle Weight Rating): The Maximum permissible weight of the unit, including the UVW plus all fluids, cargo, optional equipment and accessories. For safety and product performance, do not exceed the GVWR.

CW (Curb Weight): The weight of the unit without factory or dealer installed options, plus allowance for the weight of full fuel capacity. The "payload capacity" for all other fluids, cargo, occupants, optional equipment and accessories can be determined by subtracting the CW from the GVWR.

GAWR (Gross Axle Weight Rating): The total weight each front/rear axle, suspension and tire system is designed to carry. When loading the unit, care should be taken to balance cargo weight in consideration of the GAWRs.

GCWR (Gross Combined Weight Rating): The maximum total weight of the loaded unit, plus a tow vehicle. This includes the weight of both the unit and tow vehicle, fuel for each, all other fluids, cargo, occupants, optional equipment and accessories.

Wider Widths: Numerous Sportscoach floorplans feature the "wide body" design concept, which gives you significantly enhanced interior living space and innovative floorplans.

In making your purchase decision, you should be aware that a few states restrict access on some or all roads within the state to vehicles with a maximum 96" width, although special road usage permits may be available. Vehicles up to 102" in width are permitted in the vast majority of states. You should confirm the road usage laws in the states of interest to you before making your purchase decision. If width is of concern to you, we invite you to consider the broad array of other Coachmen models offered in the standard 96" width.

IMPORTANT NOTE: All capacities are approximate, and all dimensions are nominal. Sportscoach motorhomes are designed to allow for a wide variety of uses, extended trips with two people or short trips with multiple people. Accordingly, each unit allows ample room for sleeping, seating, fluids and cargo. While the customer is the beneficiary of this design, the customer also bears the responsibility to select the proper combination of passengers, cargo, load, and tow vehicle without exceeding the chassis weight capabilities. Consumer may need additional braking capacity to tow loads greater than 1,000 pounds.

Seat belts should always be worn for passenger safety. Seat belts are provided at most locations to allow convenience in selecting which seat to occupy. However, it is not intended that all seating positions equipped with a seat belt may be occupied while the vehicle is in motion, without regard to other weight factors.

All Sportscoach motorhomes are designed to ensure that the number of passengers allowed while the vehicle is in motion will always at least equal the stated sleeping capacity. Though extra seat belts may be provided, for your safety and the proper operation of your vehicle, limit your passengers to the number allowed by the Net Carrying Capacity of your vehicle.

All information contained in this brochure is believed to be accurate at the time of publication. However, during the model year, it may be necessary to make revisions and Sportscoach reserves the right to make all such changes without notice, including changes in prices, colors, materials, equipment and specifications, as well as the addition of new models and the discontinuance of models shown in this brochure. Therefore, please consult with your Sportscoach dealer and confirm the existence of any materials, design or specifications that are material to your purchase decision.

Paint Options



Stormy Gray



Sand Castle



Charcoal Cast

Standard Features

INTERIOR APPOINTMENTS

- Soft Touch Padded Ceiling
- Hardwood Raised Panel Cabinet Doors
- Ashland Oak Wood Cabinetry
- Residential Metal Drawer Guides
- Techwood® Drawer Sides
- Linoleum Flooring (Kitchen & Bath)
- Night Shades Throughout
- Radius Slider Windows-Coach
- Jalousie Windows-Bedroom
- Deluxe Sun Visors
- Manual Pilot Seats w/Integrated 3-Point Seat Belt
- Sofa Sleeper (Off Door Side)
- Love Seat (Door Side 370DS)
- Stanford Booth Dinette
- Folding Stepwell Cover
- Swivel Chair w/Table (372DS)
- Swivel Chair (354MBS & 376DS)

INTERIOR EQUIPMENT

- 27" Flatscreen Television-Coach
- AM/FM Cassette w/4 Speakers
- TV Antenna and Rotor Package
- Prewired for Satellite Dish
- Cable TV Jacks
- Phone Jack
- TV Cabinet in Bedroom
- LP Leak Alarm
- Smoke Detector
- Carbon Monoxide Detector
- Fire Extinguisher

GALLEY

- Microwave Oven w/Range Vent & Light
- 3-Burner (High Output) Range w/21" Oven
- Large Double Door Refrigerator
- Freezer Shelf & Refrigerator Light
- Monitor Panel
- Laminate Countertops w/Deluxe Composite Sinks
- Kitchen Faucet w/Pullout Sprayer
- Silverware Drawer

SLEEPING

- Queen Bed
- Deluxe Innerspring Mattress w/312 Coil
- Designer Headboard
- Bedsread and Pillow Shams
- Privacy Drape-Cab

BATH AND WATER

- Porcelain Toilet
- One-Piece ABS Tub Surround (Except 376DS)
- Fiberglass Shower (376DS)
- Glass Shower Door
- Power Bath Vent
- 6-Gallon Gas/Electric Water Heater
- Pump Switch at Termination
- Demand Water Pump
- Medicine Cabinet
- Skylight Over Shower

ELECTRICAL/HEATING/AC

- 50 Amp, Detachable Power Cord
- 55 Amp, 110/12-Volt Power Converter
- GFI Circuit
- Outside Receptacle (DS)
- 5.5KW LP Generator
- Emergency Start Switch
- Coach & Chassis Battery Disconnect
- Auxiliary Batteries
- Patio Light
- Rear Vision Camera
- 40,000 BTU E.I. Furnace
- In Floor Ducted Heat
- Low Profile 13,500 BTU Ducted Roof A/C
- 175 lb. LP Tank
- Prewired for Rear Roof Air Conditioner
- Fluorescent Lighting in Living Area

AUTOMOTIVE/EXTERIOR

- Defroster Fans
- Telescoping Tilt Steering Wheel
- Cruise Control
- Dash Air Conditioning
- Exterior Mirrors w/Remote
- Auxiliary Driving Lights
- Dual Fuel Fills
- Automotive Undercoating
- Hydraulic Leveling Jacks
- Chassis Air Suspension
- Air Brakes
- 300 HP Cummins Rear Diesel Engine (Turbo Charged) (5 Speed Transmission)
- 22.5" Radial Tires
- Deluxe Radius Entrance Door w/Dead Bolt Lock
- Patio Awning
- Stainless Steel Wheel Inserts
- Front & Rear Mud Flaps
- Power Entrance Steps-Double
- Rubber Entry Step Treads
- Laminated Floor & Sidewalls
- Crowned, Laminated Roof – TPO
- Basement Floor Design
- Aluminum Compartment Doors
- Front & Rear Fiberglass Caps
- Graphics with Painted Skirt
- Exterior Grab Handle
- Rotocast Seamless Storage Compartments
- Roof Ladder
- Towing Hitch
- Owner's Information Guide

Optional Features

- Air Horn
- Euro Chair w/Ottoman (Except 370DS)
- Computer Desk (354MBS)
- Residential Dinette w/4 Chairs
- Love Seat (372DS)
- 120V Energy Management System
- Home Theatre System w/DVD Player
- Day/Night Shades – Coach
- Convection Microwave
- Side-By-Side Refrigerator
- Satellite TV System¹
- VCR Player
- DVD Player
- Deluxe AM/FM Stereo w/CD Player
- XFM Radio
- 20" Bedroom TV w/ Video Switch (372DS & 376DS)
- 14" Bedroom TV w/ Video Switch (354MBS & 370DS)
- Driver-Side Sun Shade
- Power Sun Visors
- 10 Gallon Gas/Electric Water Heater
- Combo: Washer and Dryer³
- Washer / Dryer Ready³
- 6-Way Power Pilot Seat w/Integrated 3-Point Seat Belt
- Fantastic Three-Speed Roof Vent
- 2nd Low Profile 13,500 BTU Ducted Roof A/C
- 6.5 KW LP Generator
- 7.5 KW Diesel Generator
- 600 Watt Inverter⁵
- Heated Exterior Mirrors with Remote
- Deluxe Entry Door Awning²
- Slide-Out Room Awning - Coach²
- Slide-Out Room Awning - Bedroom² (Except 354MBS)
- Rear Rock Guard
- CSA Upfit¹

FOOTNOTES: (1) Mandatory For All Canadian Provinces (2) Not Available on Wide-Body Models Shipped to Canada (3) Includes Plumbing and 10-Gallon Water Heater (4) Not Available on Models Shipped to Canada (5) Will Power Televisions, VCR, & Satellite Receiver (6) Consists of Maintenance Manual, Trouble Shooting Guide, Warranty Information Booklet, and New Owners Video.



Life in the Fast Lane

NASCAR driver Mike Wallace makes a Sportscoach Diesel motorhome his home on the road. The middle brother of auto racing's famed Wallace family, Mike is a veteran of NASCAR's racing circuit.



Thoroughbred™

PERFORMANCE PLATFORM

The *Thoroughbred Platform* is integrated onto a Freightliner® Custom Chassis designed specifically for the high performance and durability of Sportscoach Diesel motorhomes. Thoroughbred platform construction begins on a laser-leveled stage that provides a true and level surface for the construction process.

Through the use of jigs and fixtures, each Thoroughbred platform meets the exacting specifications of a Sportscoach Diesel Motorhome each and every time. All steel framework utilized on the Thoroughbred platform is stored in a climate controlled environment and painted with a rust inhibiting, water-based paint. The steel is then powdercoated for a long lasting, weather resistant finish. Sportscoach uses only certified welders in the construction process, and all critical fasteners undergo a torque testing process to ensure their durability. A chassis platform is the foundation of a great coach, and the Thoroughbred provides the ultimate foundation. *Thoroughbred...Built for Performance.*

CHASSIS FEATURES

1. Thoroughbreds all steel bulkhead is lined with space-age sound deadening material to give you the quietest ride possible.
2. Standard tilt-and-telescoping steering wheel allows the drivers cockpit to be customized for all shapes and sizes.
3. For safety, the entire perimeter of the coach floor is protected by a 2" tubular steel crash barrier.
4. 22.5" Wheels with Michelin tires provide reliable contact with the road. The large tire size promotes a smoother and more comfortable ride.
5. Slideroom mounts are welded directly to the chassis for a solid and durable slideroom platform. Solid mounts resist torque or twisting of the slideroom.
6. The tow hitch provides ample capacity for a generous sized tow vehicle or a trailer full of toys.
7. Freightliner's 9" high steel frame rails are the tallest in the industry, and provide a solid foundation that minimizes coach stress.
8. All steel framework is painted with a water based, rust inhibiting paint, and then powdercoated for a long lasting finish.
9. Dual side fuel fills on every Sportscoach make for easy and convenient fill-ups from either side of the coach.
10. Standard anti-lock air brakes provide peace of mind with controlled steering during emergency stops.



OasisNetwork

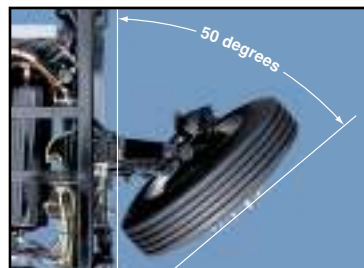
The Freightliner Oasis Network is a group of over 50 select dealerships across the country that cater to the motorhome user. Each service location has a dedicated facility with trained motorhome service technicians, a motorhome service area, secure parking for motorhome customers and additional amenities designed specifically for motorhome owners. No other chassis manufacturer can match the nationwide network of quality dealers servicing their chassis.



The Cross Country by Sportscoach boasts a 5.9L, 300hp Cummins ISB turbocharged engine. At 600 lb/ft of torque, there is plenty of power to conquer the tallest of mountains.



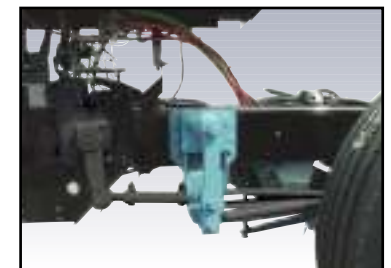
The new Allison 5-speed MH-2500 transmission with touch pad selector provides the perfect complimentary drive train to ensure maximum performance of the Cummins engine.



50 degrees of wheel cut offers an extremely tight turning radius for superior maneuverability in tight locations. This translates up to a 25% tighter turning radius than many of the competitors.



Standard full air ride suspension offers a ride up to 30 percent softer than the traditional steel springs used on many competitors chassis. Four inboard mounted air bags hold more air than a conventional eight-spring system and provide less body roll and increased storage capacity.



The bell crank is designed into every chassis to provide a smooth steering response. "Bump Steer", which occurs when the steering wheel moves in reaction to the suspension, is virtually eliminated.

THE DIESEL AUTHORITY

DISCOVER THE SPORTSCOACH® ADVANTAGES

Service after the sale

- **Industry Leading Buckstopper™ Warranty** – The exclusive Buckstopper™ Limited Warranty provides one-year coverage on most parts, components and appliances. Sportscoach Diesel Motorhomes are supported by a network of over 300 service centers across the country.
- **Two Year Structural & Major Components Manufacturer's Warranty** – All Sportscoach Motorhomes have a two-year structural and major components manufacturer's warranty, along with a complete written Warranty Summary Guide, for your peace of mind.
- **Comprehensive Owner's Information** – For your convenience we offer published materials on key equipment and options, as well as information pertaining to the function of important components. We also offer a true Trouble Shooting & Maintenance Guide for the simple answers to frequently asked questions.



- **Toll Free Service Numbers** – Our toll free phone numbers provide you with direct access to a Sportscoach Service Representative.

- **Dealer Support Tools** – Dealers are well equipped and trained to service your needs with: Systems Manuals, PDI Manuals, Electronic Parts Catalogs, Coach-Link® “On-Line” Electronic Dealer Communication System, and continual service training.

- **Service Support Center Web Site** – You are provided access to key information 24-hours a day through the Internet. On-line you can find a Service Dealer Locator, Maintenance Information, Trouble Shooting Information, Product Warranty Information, Customer “E-Assistance”, Frequently Asked Questions (FAQ's), and Publications ordering dating back to 1972 models.
- **Priority Parts Ordering** – Provides a program for overnight parts shipment in critical repair situations.



YOUR SPORTSCOACH PROFESSIONAL

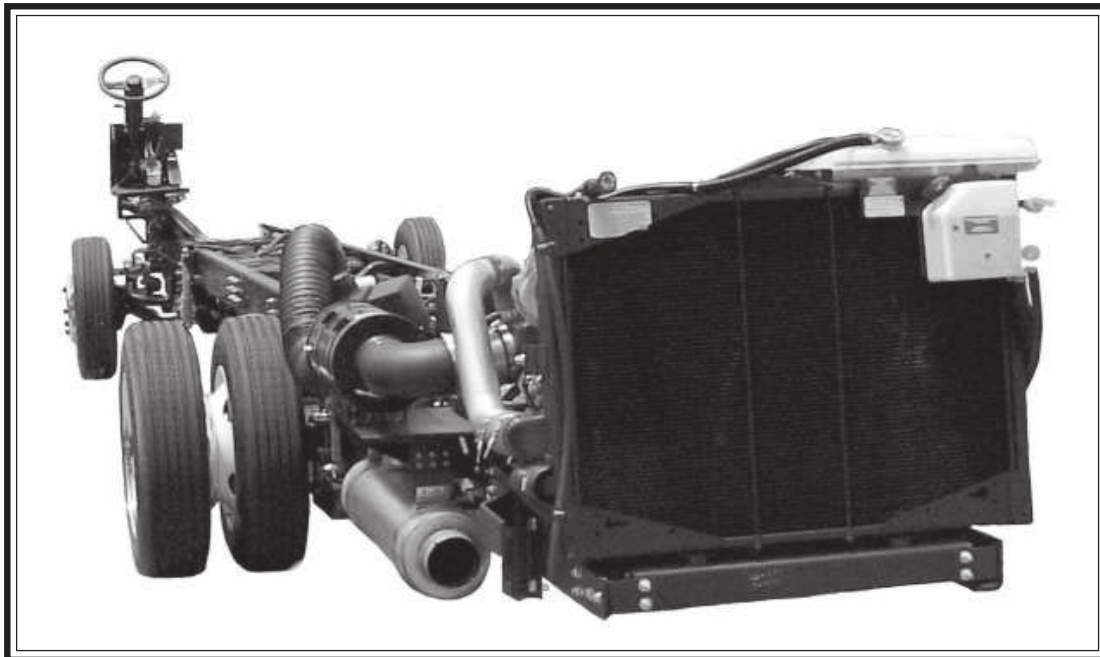
Coachmen Recreational Vehicle Company, LLC
Visit Our Website At: www.coachmenrv.com
P.O. Box 30, Middlebury, IN 46540 • P.O. Box 948, Fitzgerald, GA 31750



XC- Series Motorhome Chassis

<u>FEATURE</u>	<u>BENEFIT</u>
■ 3 Year, 50,000 Mile Warranty	Best in The Industry
■ 9" 50,000 PSI Frame Rail	Solid Foundation
■ 50 Degree Wheel Cut	Excellent Maneuverability
■ Over 350 Dealers	Service Where You Need It

2005 MODEL YEAR



Cross Country

by Coachmen Recreational Vehicle Co.

**Cross Country
by Coachmen
Recreational Vehicle Co.
Custom Chassis
Features**

- 5 year, 100,000 mile coolant ***
- TranSynd Transmission Fluid
- 15.2 CFM air compressor
- Fuel/water separator
- Farr Eco-air cleaner
- Air filter restriction indicator
- 750 watt in-block engine heater
- Exhaust brake
- R-134A air conditioning compressor
- Electronic cruise control with high idle
- VIP steering wheel, 18 in (457 mm)
- Douglas tilt/telescoping steering column
- Push button shift control
- LCD Info center
- Neway air ride suspension/Sachs tuned shock absorbers
- Michelin XRV 235/80R 22.5 LRG
- Heater hose assembly to front of chassis
- Haldex PUrest heated air dryer
- Automatic, heated moisture ejector
- Air suspension deflation system
- Tow power connector

* Transmission limited GCWR. See operators manual for braking requirements on towed vehicle.

** Tire size may affect wheel cut.

*** Some maintenance required

For reference only. For certified dimensions, consult Freightliner Custom Chassis Corporation. Specifications are as of 5/03/04, and are subject to change without notice. Ratings are general guidelines. Illustrations may include optional equipment and accessories but may not include all standard equipment. To order more sales literature call 1-800-585-8831.



XC-SERIES	
Engine Peak Hp Peak Torque	Cummins ISB turbocharged, aftercooled, 5.9 L electronic diesel 300 Hp @ 2,400 600 lb•ft (895 N•m) @ 1,900 rpm
Transmission Gear Ratios:	Allison 2500 MH five-speed automatic with lock up <u>First</u> <u>Second</u> <u>Third</u> <u>Fourth</u> <u>Fifth</u> <u>Rev.</u> 3.51:1 1.90:1 1.44:1 1.00:1 0.74:1 5.09:1
Vehicle Weight Ratings Front GAWR Rear GAWR GVWR GCWR *	9,350 lb (4245 kg) 17,500 lb (7945 kg) 26,850 lb (12 190 kg) 33,000 lb (14 982 kg)
Wheelbase	228in (5791mm) 242in (6147mm)
Front Axle Capacity Track Width	I-Beam, wide track 10,500 lb (4767 kg) 81.9 in (1948 mm)
Rear Axle Drive Ratio Capacity Track Width	4.78:1 17,500 lb (7945 kg) 72.1 in (1831 mm)
Brakes Front and Rear Service Parking	Full air brakes with auto slack adjusters and ABS 15 x 4 in (front) and 16.5 x 7 in (rear) drum-style S-cam Spring applied air release 16.5 x 7 in drum-style (rear axle) Push-pull knob controlled
Cooling System Radiator Core Radiator Type Charge Air Cooler Transmission Oil Cooler Fan	2 rows, 15 FPI, 1050 in ² (6775 cm ²) area Cross-flow, rear mounted Cross-flow Remote mounted water-to-oil Belt driven
Electrical System Alternator Starting Battery	Leece-Neville 160 amp Delco 28MT, 12 volt Two 950 CCA @ 0°F (-18°C); maintenance-free
Frame Max Resist. Bending Moment Max Frame Section	Straight Frame Rail Construction 291,000 lb•in (32 892 N•m) 9.00 x 2.75 x .25 in (229 x 70 x 4.8 mm)
Fuel Tank	90 gal (341 L), dual fuel fill
Steering System Rating Ratio Pump Wheel Cut **	TRW TAS 65, integral hydraulic power gear 12,000 lb (5448 kg) 20.4:1 Gear-driven 50°
Suspension Shock Absorber Heavy-Duty Stabilizer Bar Diam	Neway air suspension Tuned shocks, Sachs 1.50 in (38 mm) (front)
Tires	Michelin radial XRV 235/80R 22.5 LRG
Wheels	Steel 22.5 x 8.25 in (572 x 210 mm) with 10 bolt lugs 11.25 in (285.75 mm) diameter bolt center
Instrumentation	Gauges: Speedometer with odometer • Tachometer • Engine Oil Pressure • Water Temperature • Voltmeter • Fuel Level • Dual Air Press