

2 • 0 • 0 • 4

Hurricane

Class A Motorhome

LET HURRICANE CAPTIVATE YOUR IMAGINATION



FW
Four Winds
INTERNATIONAL

THE HURRICANE CLASS A MOTORHOME OFFERS FIRST CLASS COMFORT AND STYLE



The Hurricane Class A motorhome will captivate your imagination. With six exciting floorplans, four designer interior decor packages and three distinctive exterior graphics and paint options, it's easy to find a model to meet your needs, tastes and lifestyle.

You'll find plush wall-to-wall carpeting in the living area and bedroom, and residential linoleum in the galley. The spacious interior has been thoughtfully designed for easy accessibility, convenience and comfortable living.

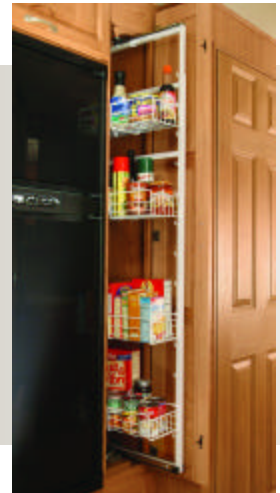


The front overhead area features a flat screen color television and ample storage cabinets with glass inserts on either side. It is also equipped with a standard XM satellite-ready, AM/FM stereo with compact disc player. The cockpit area is designed for maximum driver and passenger comfort. A large panoramic windshield and deluxe exterior mirrors to provide added driver safety.

Hurricane motorhomes are available in a variety of different sizes and floorplans, including both semi-basement models and full basement models with slideouts.

The slideout models dramatically expand your living area for added comfort and enhanced living. Single slideout models (30F and 33SL), have a large sofa and dinette slide room in the front. The double slideout models (31K and 32R), feature a dinette slide room in the front and a bedroom slide in the rear.

All slideout models include additional convenience features. An exterior awning extends over slideout rooms to protect against outside elements. A specially designed in-floor slide system allows for full-height storage compartments below the slideouts. The 31K floorplan features our patented travel lock system which holds the slideout room securely in place with the push of a button.



The handy oak slide-out pantry offers plenty of additional storage that holds items secure—even when on the road. Note: The slide-out pantry is only available on the 30F, 31K, 32R and 33SL.

You'll find that the kitchen is well designed to meet your food planning and preparation needs. Standard features include a full 6-cubic-foot, double door refrigerator, microwave oven and three-burner, high-output gas range top with oven. There is also a large double stainless steel sink with handy single lever faucet and lots of

counter space. The spacious cabinets feature an attractive Honey Oak finish. Storage drawers have double metal roller guides for added durability and easy access.

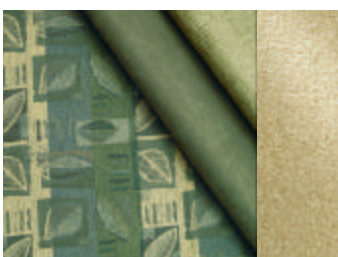


Honey Oak



You can see the cozy comfort of the attractive bedroom appointments which include a queen-size bed, inner spring mattress, and color-coordinated bedspread and pillow shams. The 31K and 32R floorplans feature a lighted vanity with stool.

INTERIOR DECOR PACKAGES



Decoupage Moss, Wheat carpet



Firethorne Onyx, Wheat carpet



Rockport Amethyst, New Magenta carpet

New!



Twizzler Sage, Wheat carpet (not available until December, 2003)

CLASSIC STYLING, LONG-LASTING QUALITY CONSTRUCTION



The bedroom in this 30Q floorplan features the stylish Rockport Amethyst decor package. All Hurricane bathrooms are equipped with distinctive features such as a skylight in the shower, medicine cabinet, power bath vent, marine toilet and vanity with light bar.

Hurricane



The Hurricane 30Q floorplan shown with the standard exterior graphics package.

Hurricane motorhomes feature high-quality construction through and through. The two semi-basement models (29D and 30Q) feature a sturdy 16-gauge tubular welded steel floor system. The four slideout models (30F, 31K, 32R and 33SL) have full basements, and a sturdy 3" steel welded floor system with in-floor heating.

The roof, walls and floors are fully laminated with high-density block foam insulation for added energy savings. The air conditioning ductwork is molded right into the roof insulation for even air circulation.

The all-steel construction of the cockpit area provides greater safety, durability, and reduces road noise and vibration. It features a double-plated steel firewall, all-steel dash and cockpit that is fully insulated.



The Hurricane 32R floorplan shown with the vibrant Silver Metallic exterior paint option.



The Hurricane 32R floorplan shown with the eye-catching Desert Sand exterior paint option.

THE FOUR WINDS QUALITY DIFFERENCE

What sets Four Winds International apart from other manufacturers? It's our level of quality. Quality in our distinctive exteriors. Elegant, yet functional interiors. The extra attention to detail we provide to all of our interior appointments. Safety features integrated throughout. Durable, long-lasting construction. Those special convenience features designed to make your life a little more comfortable.

We are dedicated to building this same quality in every motorhome we manufacture—from the inside out. It's a commitment we take seriously, and one that you can depend on year after year.

ADDED VALUE, INNOVATIVE DESIGN

Value is an important component integrated into all of our designs. Our ultimate goal is to build the right combination of quality, functionality and durability into each recreational vehicle for an extraordinary value.

For example, all Four Winds recreational vehicles come with a full two-year, 24,000 mile bumper-to-bumper limited warranty.

Plus, you'll also receive a free Customer Care



Roadside Assistance Plan for the first year. This program provides complete and fully paid roadside assistance, emergency road service and special support benefits that follow you wherever your travels take you—24-hours a day, seven days a week.

When it comes to innovative design, Four Winds is second to none. From ongoing research and development, computer aided design, regular product testing and keeping up with leading edge technology—we continue in our tradition to enhance the quality and value of our products.

We strive to go beyond your expectations in every Four Winds recreational vehicle so you can enjoy a better quality of life when traveling on the road.

THE DIFFERENCE IS CLEAR

At Four Winds, our customer service extends even beyond the sale. Our nationwide dealer network is fully equipped and trained to meet your service needs. The experienced Four Winds support staff is available to provide assistance on all technical, service and warranty issues. We also provide all new owners with a comprehensive owners manual that includes important information about your new recreational vehicle, including components, appliances, operating systems, safety and identification issues, chassis functions, maintenance and care.

Four Winds continues in our commitment to provide high-quality products and support services that results in customer satisfaction—one customer at a time. So whether you are a first-time recreational vehicle owner, or a seasoned one, we want you to enjoy many years of adventures in your Four Winds motorhome. This is the Four Winds difference.

WHY THOR IS YOUR BEST RV VALUE

Thor Industries, Inc., listed on the New York Stock Exchange (THO), proudly traces its history back over seventy years to the pioneering days of the recreational vehicle industry with the founding of Airstream, the industry's oldest and most renowned brand. Our total commitment to quality and our philosophy of putting our customers first has led to our continuous growth.

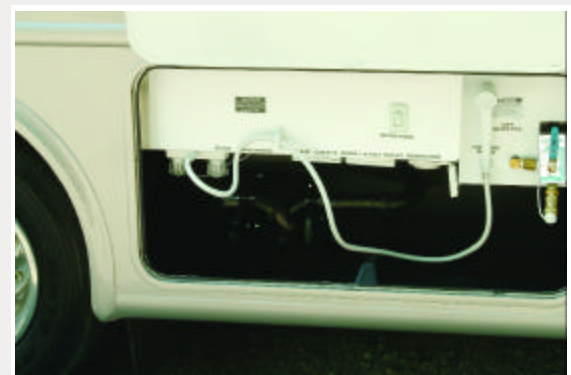
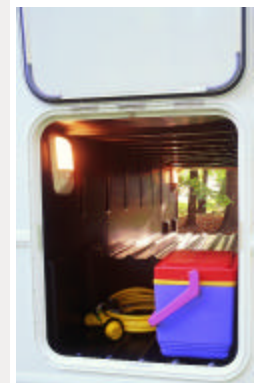
Today, Thor is the largest builder of recreational vehicles. Thor's strong financial condition and years of solid growth are your assurance that we will be here to serve you for years to come. We think this extra peace of mind is important when you are making a significant investment. Because our customers are always #1 with us, we work harder than other manufacturers to satisfy you.

ADDED CONVENIENCE FEATURES... A HURRICANE PLUS



The new One-Stop™ System Center houses commonly used switches and controls all in one convenient location. These include the systems indicator (shows holding tank and battery charge levels), water heater control switches, thermostat, generator control and hour meter, and slide-out control (if applicable). Note: The One-Stop™ System Center is only available on the 30F, 31K, 32R and 33SL.

Ample pass-through exterior storage compartment offers plenty of extra storage for large, bulky items as well as small personal belongings. The fully insulated, locking metal doors are easy to open, and ensure convenient, safe storage for your valued belongings while traveling.



The Below Floor Utility Station is securely enclosed in a seamless Roto-Cast® storage compartment. It houses phone, cable, electrical and plumbing connections where they are kept protected and dry. Everything is clearly marked and simple to connect so set-up and tear-down is a snap. Note: The Below Floor Utility Station is only available on the 30F, 31K, 32R and 33SL.

STANDARD AND OPTIONAL FEATURES

BODY CONSTRUCTION/EXTERIOR FEATURES

Standard

- 1-1/2" x 1-1/2" 16-gauge tubular steel welded floor system (29D and 30Q only)
- 3" steel welded floor system with in-floor heating (30F, 31K, 32R and 33SL only)
- Fully laminated roof, walls and floors with high-density block foam insulation
- Fully welded tubular aluminum roof and sidewall cage construction
- Wide body design
- Seamless fiberglass exterior sidewalls
- EGS steel strapping laminated into walls and ceiling
- Air conditioning ductwork molded right into roof insulation and residential-style ducted heat
- TuffPex® plumbing system with brass fittings
- Below floor exterior utility station (30F, 31K, 32R and 33SL only)
- 4-point hydraulic leveling jacks with patented bi-axis leveling (30F, 31K, 32R and 33SL only)
- Premium one-piece rubberized roof—Energy Star approved and labeled
- Rubber tread entry steps
- Automatic electric entrance step
- Factory installed awning
- Roof ladder

Options

- 4-point hydraulic leveling jacks with patented bi-axis leveling (29D and 30Q only)
- Exterior shower

AUTOMOTIVE/COCKPIT FEATURES

Standard

- Double steel plated fire wall, cab floor and steel reinforced dash
- Factory installed 5,000-lb. hitch
- Large panoramic windshield
- Wood grain dash insert
- Convenient drink tray
- Dash fans
- Convenient drink tray
- Deluxe exterior mirrors
- One-piece fiberglass front and rear caps
- Fog lights

Options

- Exterior paint package
- Heated, remote exterior mirrors
- Spare tire with rim (not available on the Workhorse 20.7 chassis)
- Wheel liners

INTERIOR FEATURES

Standard

- Choice of three interior decor packages

- Wall-to-wall carpeting (living area and bedroom)
- Residential linoleum (galley)
- 13,500 BTU roof air conditioner—front
- Honey Oak cabinetry
- Raised oak upper and base cabinet doors and drawer fronts
- Hardware with Brushed Nickel finish
- Mini blinds throughout
- Windshield privacy curtain
- Telephone jack
- One-Stop interior systems center (30F, 30K, 32R and 33SL only)

Options

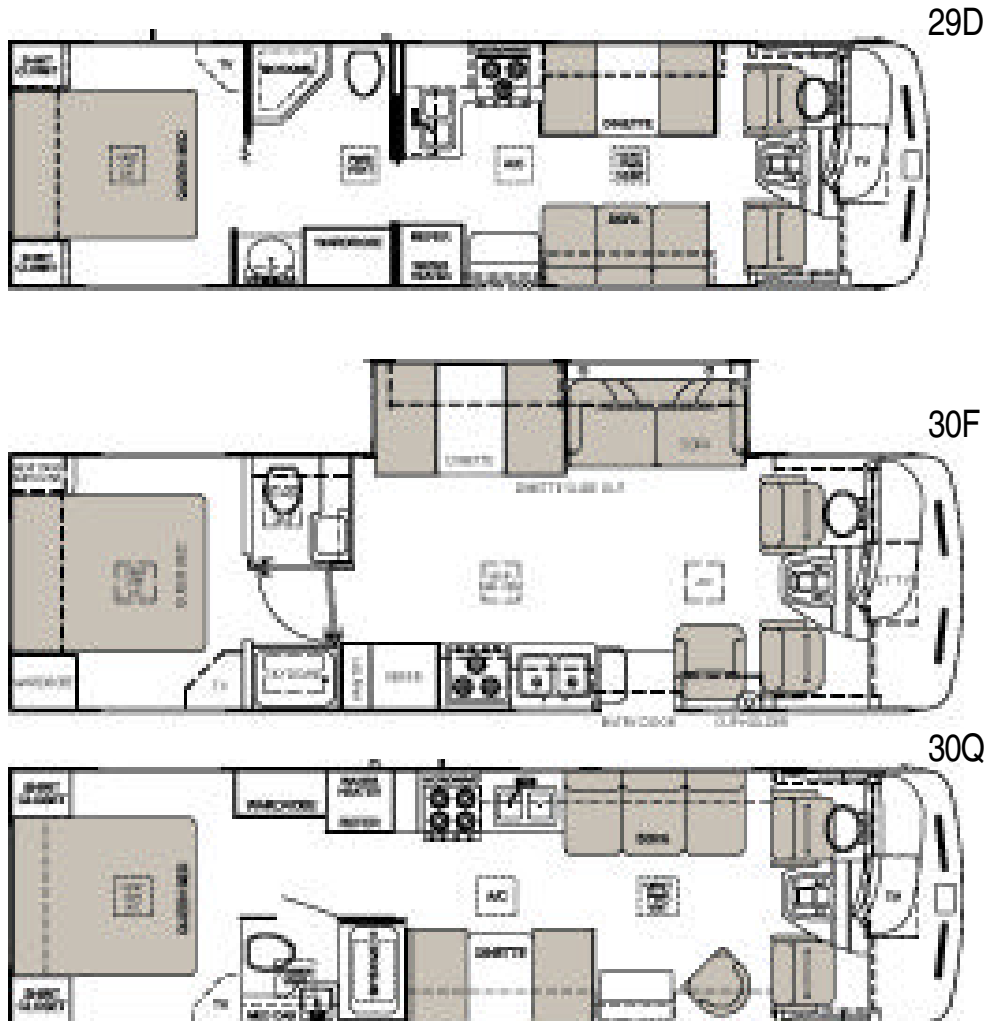
- 13,500 BTU rear roof air conditioner
- Day/night shades throughout
- Fantastic® ceiling fan
- Dual pane windows
- Hide-a-bed sofa (30F, 32R and 33SL only)
- Fabric recliner in place of barrel chair (30F, 32R and 33SL only)

GALLEY

Standard

- 6-cubic-foot double door refrigerator
- 3-burner high-output gas range top with oven
- Microwave oven
- Single lever kitchen faucet
- Large stainless steel double sink

HURRICANE FLOORPLANS



- Slide-out pantry (30F, 30K, 32R and 33SL only)

Options

- Convection microwave with 3-burner high-output gas range top
- Free-standing dinette with four chairs

ENTERTAINMENT

Standard

- Cable television hook-up
- 20" flat screen front color television in front overhead (29D and 30Q only)
- 24" flat screen front color television in front overhead (30F, 31K, 32R and 33SL only)
- 20" flat screen color television—bedroom (31K and 32R only)
- Television cabinet—bedroom (not available with twin beds)
- XM satellite ready AM/FM stereo with compact disc player

Options

- Home theater system with DVD player (30F, 30K, 32R and 33SL only; not available with free-standing dinette)
- 14" flat screen color television—bedroom (30F, 30K, 32R and 33SL only)
- Video cassette recorder
- Back-up camera with audio
- DVD player
- Satellite dish

BEDROOM/BATHROOM

Standard

- Inner spring mattress
- Bedspread and pillow shams
- Vanity with stool (31K and 32R only)
- Power bath vent
- Marine toilet
- Skylight in shower
- Glass shower doors (31K and 32R only)

Options

- Twin beds with nightstand (29D, 30Q, 31K and 33SL only)
- Glass shower doors (30Q, 30F and 33SL only)

SAFETY FEATURES

Standard

- Entry door with deadbolt lock system
- Smoke detector
- Fire extinguisher
- LPG detector
- Carbon monoxide detector
- Seatbelts throughout and three-point seatbelts for the driver and passenger

ELECTRICAL SYSTEMS

Standard

- 4.0 KW Generac generator (29D, 30Q and 30F only)
- 5.5 KW Generac generator (31K, 32R and 33SL only)
- 30-amp service

- Marine-type detachable power cord
- Satellite prep
- 6-gallon gas/electric water heater
- Water heater bypass system
- Battery disconnect switch
- Emergency start switch

Options

- 4.0 KW Onan® Micro Quiet generator (29D, 30Q and 30F only)
- 5.5 KW Onan® generator
- 50-amp service
- Second auxiliary battery

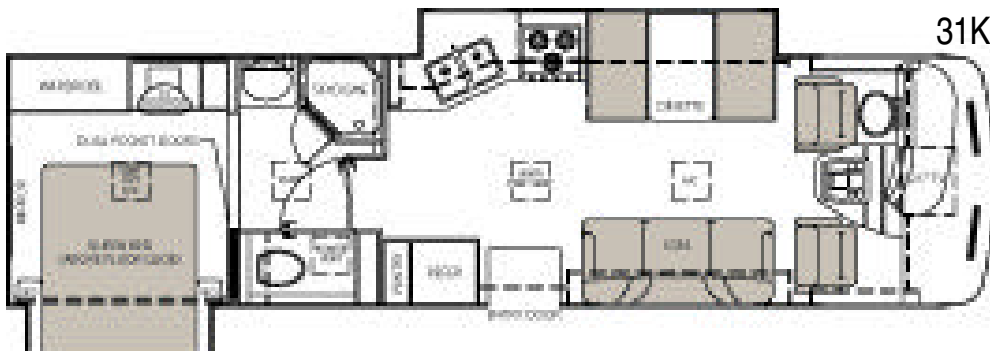
STORAGE AREAS

Standard

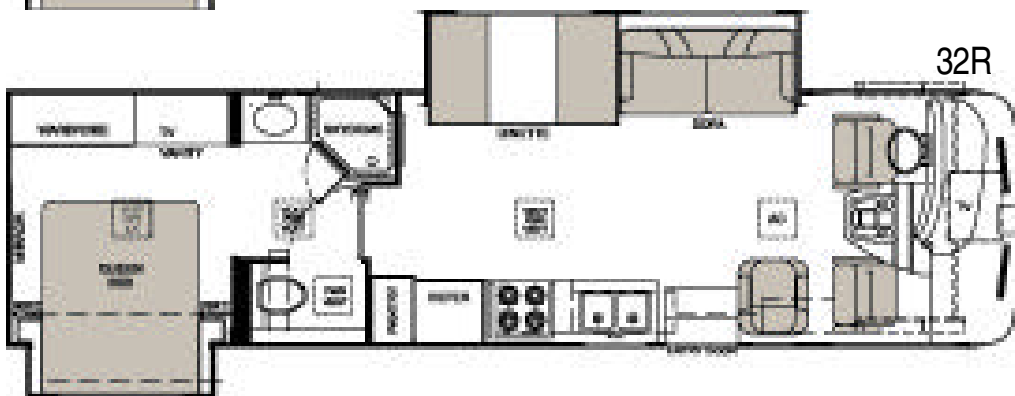
- Large pass-through storage compartment
- Seamless Roto-Cast® storage compartments
- Flush mount luggage doors
- In-floor slide system allowing for full height storage compartments (30F, 30K, 32R and 33SL only)
- Heated and enclosed Roto-Cast® holding tanks (30F, 30K, 32R and 33SL only)

Options

- Heated holding tanks (29D and 30Q only)



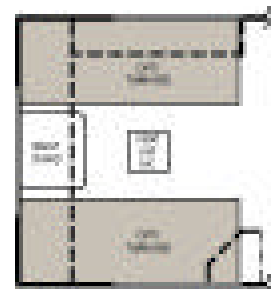
31K



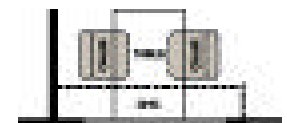
32R



33SL



Twin Bed Option
(29D, 30Q, 30F and 33SL only)



Free-Standing
Dinette Option

2004 HURRICANE CLASS A SPECIFICATIONS

Model	29D	30Q	30F	31K	32R	33SL
Weight Rating (Lbs.)						
Ford Chassis - 6.8L/Engine	V10	V10	V10	V10	V10	V10
Gross Vehicle	15,700	15,700	18,000	20,500	20,500	20,500
Gross Axle (Front)	6,000	6,000	7,000	7,000	7,000	7,000
Gross Axle (Rear)	11,000	11,000	11,000	13,500	13,500	13,500
Dry (UVW)	13,125	13,040	15,370	15,970	15,890	15,875
Gross Combined	26,000	26,000	26,000	26,000	26,000	26,000
Net Carrying Capacity	2,575	2,660	2,720	4,530	4,610	4,655
Workhorse Chassis - 8.1L Engine	Vortec	Vortec	Vortec	Vortec	Vortec	Vortec
Gross Vehicle	15,000	15,000	18,000	20,700	20,700	20,700
Gross Axle (Front)	6,000	6,000	6,000	7,500	7,500	7,500
Gross Axle (Rear)	10,000	10,000	12,000	13,500	13,500	13,500
Dry (UVW)	12,605	12,525	14,895	16,605	16,680	16,435
Gross Combined	19,000	19,000	21,000	26,000	26,000	26,000
Net Carrying Capacity	2,395	2,475	3,105	4,095	4,020	4,265
Measurements						
Wheel Base	190"	190"	190"	208"	208"	208"
Exterior Length (w/o ladder)	30'11"	31'5"	31'2"	32'9"	32'9"	33'11"
Exterior Height (w/A/C)	11'5"	11'5"	11'5"	11'5"	11'5"	11'5"
Exterior Width	99"	99"	99"	99"	99"	99"
Interior Width	96"	96"	96"	96"	96"	96"
Interior Height	80"	80"	80"	80"	80"	80"
Awning Size	16'0"	16'0"	15'0"	17'0"	17'0"	17'0"
Tank Capacities						
Fuel - Ford/Workhorse (Gal.)	75/60	75/60	75/75	75/75	75/75	75/75
LPG (Pounds)	84	84	83	83	83	83
Fresh Water (Gal.)	52	52	65	65	65	65
Water Heater (Gal.)	6	6	6	6	6	6
Waste Water (Gal.)	26	26	44	44	44	44
Gray Water (Gal.)	44	44	50	50	50	50
Furnace BTUs	35,000	35,000	35,000	35,000	35,000	35,000

VEHICLE LOADING: Every effort has been made to provide the greatest number of options for the recreation vehicle owner. Along with these choices comes the responsibility to manage the loads that are imposed by the choices so that they remain within the manufacturer's specified chassis weight limits. Do not overload the recreation vehicle.

DRY WEIGHTS: Based on standard features; optional equipment not included. Net carrying capacity (NCC) determined by subtracting unloaded vehicle weight (UVW) from gross vehicle weight, (GVWR) and includes fluids, options, and cargo. Liquid capacities and weights are approximations only.

WARNING: This information is intended as a guide only. Weights of individual vehicles may vary. Consult your owner's manual for complete loading, weighing, and towing instructions.

IMPORTANT: Towing capacity may vary by chassis model, floor-plan, options and loading of the vehicle. This may result in a towing capacity which is less than the maximum capacity of the hitch. Do not exceed the vehicle's Gross Combined Weight Rating (GCWR), or the hitch rating. A separate functioning brake system is required for any towed vehicle or trailer weighing more than 1,000 lbs. (450 KG) when fully loaded.

WARRANTY...The Industry's Best Warranty—By Far!

We're so confident in the design and construction of our products that they are covered by Thor's exclusive Full Two-Year Limited Warranty* "bumper-to-bumper" coverage to protect your RV investment. The best protection in the RV industry—by far!

*For complete information see the warranty provided with your vehicle.



This brochure is printed on recycled paper as part of Thor's corporate effort to minimize waste and conserve our natural resources. Providing safe, fuel-efficient recreational vehicles is Thor's way of further demonstrating our role as the industry leader in safeguarding our nation's environment.

Product information, specifications, and photography in this brochure were as accurate as possible at time of printing. Photographs may contain some features that are optional on your vehicle. Since we continually strive to improve our products, actual products may differ. Prices and specifications are subject to change without notice. All capacities are approximate and dimensions are nominal. Some features or options may be different or unavailable in Canada.



P.O. Box 1486 • Elkhart, Indiana 46515-1486

Phone: 574-266-1111 • Fax: 574-294-8971 • www.fourwinds-rv.com



© 2003 Four Winds International Litho USA 903-60M