

08 OUTLOOK





SMARTSPACE
WEB

START YOUR VACATION WITH A NEW OUTLOOK.

Make your travels more memorable with a 2008 Winnebago Outlook.® With three models and a host of popular features, there's an Outlook perfect for any adventure. Each floorplan is designed and created with our SmartSpace™ design philosophy that employs innovative features like a 19" LCD TV that tucks away in the front bunk bed area to make the most of the available space. You'll also

enjoy contemporary fabrics and stylish curved cabinetry that is sized to better accommodate your gear and provide a welcoming environment. Whether you're traveling for a weekend or weeks on end, the top-selling Winnebago Outlook will always make you feel at home.

WELCOME HOME

The Outlook greets you with an inviting atmosphere composed of luxurious curved cabinetry in your choice of Honey Cherry or Washed Maple, nickel hardware, contemporary fabrics and stylish formed countertops.

Choose the Interior Upgrade Package for more upscale features such as rope accent lighting, day/night pleated blinds that let you choose the level of privacy, a decorative range backsplash, a dash appliqué and more. It also includes a Titanium Touch™ stainless refrigerator façade that resists finger-prints, is warmer to the touch than traditional stainless steel and even holds your favorite kitchen magnets. Get cold, filtered water on demand by adding the water filtration system.

A bunk with a ladder comes standard or you can choose the overhead entertainment center with a 27" TV with DVD player, Home Theater Sound System and additional storage. Cooling comfort is provided by ceiling-ducted air conditioning with an available heat pump that can help warm the coach on cool mornings. Both are controlled by a single, digital, wall-mounted thermostat for enhanced temperature control.

WEB Select a Key Feature

The **WEB** icon designates a Winnebago Industries Key Feature. For further in-depth information and photos, use the Drop-down Menu or click on the 'Key Features' page at winnebagoind.com.



31C Tuscan Sun with Honey Cherry

ENTERTAINMENT CENTER Add the overhead entertainment center and get the Home Theater Sound System with a receiver, amplifier, DVD player, five surround-sound speakers and a subwoofer to bring your favorite movies and shows to life.



FULL-EXTENSION DRAWER SLIDES Drawers are sized to maximize storage, hold tight with positive latches and open fully for easy access to stored items.



APOLLO RANGE The 3-in-1 range/covection/microwave oven by Apollo® features a stainless steel cook top with three high-output sealed burners and an oven that cooks and browns like a conventional oven in half the time.



OVERHEAD BUNK The bunk can be enhanced with a 19" LCD TV that conveniently tucks away and a built-in stereo system with AM/FM radio, CD/DVD player, alarm clock, MP3 input and a headphone jack.



BEDROOM Sleep soundly in the standard queen-size bed. The bedroom in the 29B offers a spacious rear slideout and mirrored wardrobe.

TAKE IT WITH YOU

Your Outlook is loaded with Smart Storage™ that lets you conveniently bring along more gear. That's because Smart Storage uses every inch of available storage for its maximum benefit. The large rear compartment in the 31C and 31H has access from both the side and rear of the motor home for your convenience. Deluxe Graphics with fiberglass running boards and wheel lips offer stylish exterior enhancements.

Driving your Outlook is fun and relaxing in the comfortable cab seats with available UltraLeather™. Plus, it's a pleasure to drive with automotive controls and a rearview monitor that takes the stress out of backing and maneuvering.

Listen to CDs, the weather band, or connect your iPod to the RV Radio.® Upgrade to the Sirius® Satellite radio package for crystal-clear programming anywhere in the U.S. This package is also iPod ready so you can listen to and control your iPod through the dash stereo.

WEB SIRIUS® RV•RADIO



WEB TRUELEVEL Eliminate tank-level guesswork with our exclusive TrueLevel™ holding tank monitoring system. It incorporates detector cells that determine liquid levels from outside the tank. No probes means no more corrosion, just accurate readings, time after time.



WEB SMART STORAGE A unique rear storage compartment is a part of the Smart Storage design in the 31C and 31H. It includes a storage compartment cover that converts into a table with folding legs.



STORAGE BIN A side storage bin, featured on 31C and 31H, comes with a drain plug so you can store wet gear or keep your drinks on ice.



ENTERTAINMENT CENTER The available exterior entertainment center includes an AM/FM stereo, CD player, 12-volt DC receptacle, TV jack, 110-volt outlet, two speakers and a removable table.

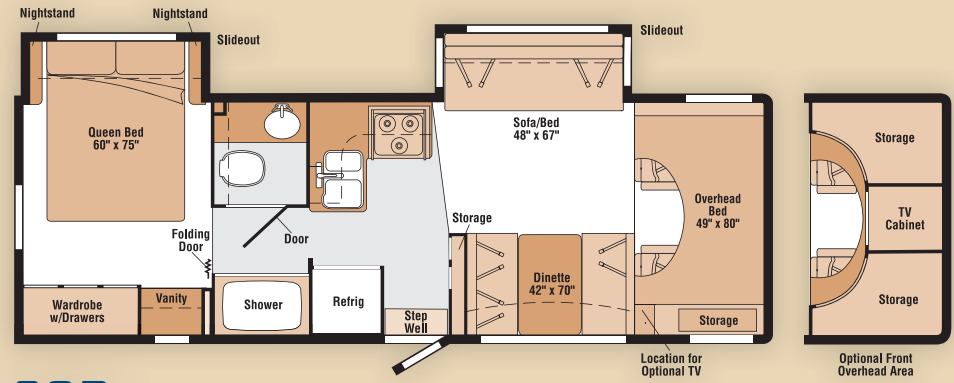


WEB STOREMORE No need to crawl on your hands and knees to get your gear. The StoreMore® slideout system on the 31C and 31H, pioneered by Winnebago Industries®, allows exterior storage bays to extend with the slideout room for easy access.

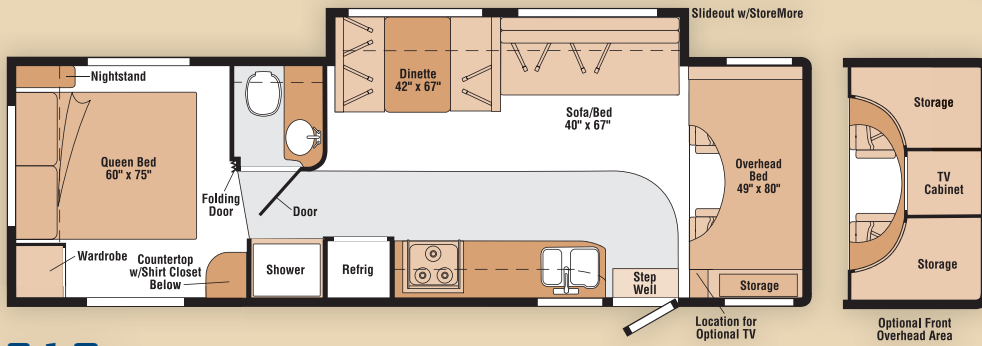
08 OUTLOOK FLOORPLANS

Carpet
 Vinyl Floorcovering
 Seat Belts

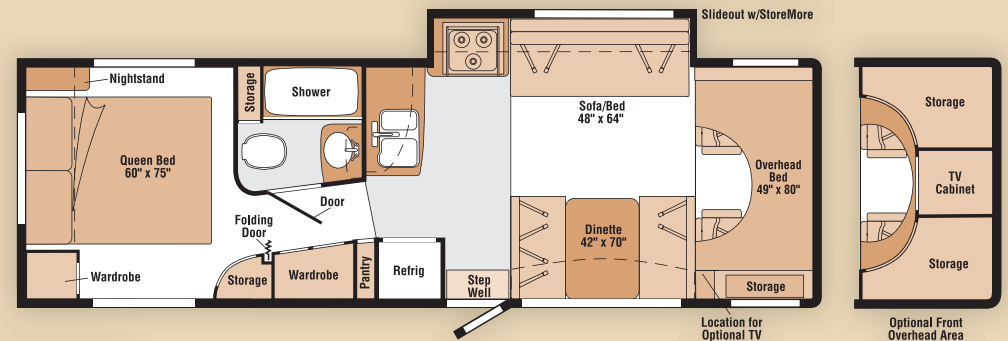
Note: Dimensions shown are for sleeping space only and may vary due to styling differences. Dashed lines denote overhead storage areas.



29B



31C



31H

08 OUTLOOK SPECIFICATIONS

WEIGHTS & MEASURES	29B	31C	31H
Length	29'11" ^A / 30'10" ^B	31'5" ^A / 32'3" ^B	32'1" ^A
Exterior Height¹ w/A/C	11'5" ^A / 11'8" ^B	11'5" ^A / 11'8" ^B	11'5" ^A
Exterior Width²	8'5.5"	8'5.5"	8'5.5"
Exterior Storage³ (cu. ft.)	59.6	93	83.3
Awning Length	14'	16'	16'
Interior Height	6'8"	6'8"	6'8"
Interior Width	8'	8'	8'
Freshwater Capacity w/Heater⁴ (gal.)	38	42	42
Holding Tank Capacity - Black/Gray⁴ (gal.)	30/39	35/28	27/38
LP Capacity⁵ (gal.)	18	18	18
Fuel Capacity (gal.)	55	55	55
GCWR⁶ (lbs.)	20,000 ^A / 17,600 ^B	20,000 ^A / 17,600 ^B	20,000 ^A
GVWR (lbs.)	14,050 ^A / 14,050 ^B	14,050 ^A / 14,050 ^B	14,050 ^A
GAWR - Front (lbs.)	4,600 ^A / 4,600 ^B	4,600 ^A / 4,600 ^B	4,600 ^A
GAWR - Rear (lbs.)	9,450 ^A / 9,450 ^B	9,450 ^A / 9,450 ^B	9,450 ^A
Wheelbase	190" ^A / 191" ^B	220" ^A / 221" ^B	215" ^A

AUTOMOTIVE/CHASSIS	29B	31C	31H
A Ford[®] E450 Chassis – 6.8L SOHC Triton [®] V10 engine, 305-hp, automatic transmission, TorqShift [™] , 5-speed w/tow/haul feature, 4-wheel ABS, 130-amp. alternator, dual air bags, Trailer Hitch⁶ 5,000-lb. drawbar/350 lbs. maximum vertical tongue weight & wiring w/7-pin connector, Wheel Liners stainless steel	S	S	S
Chevrolet[®] Chassis⁷ – 6.0L 6000 Vortec V8 engine, 300-hp, automatic transmission, 4-speed overdrive, 4-wheel ABS, 145-amp. alternator, dual air bags, Trailer Hitch⁶ 3,500-lb. drawbar/350 lbs. maximum vertical tongue weight & wiring w/7-pin connector, Wheel Liners stainless steel	0	0	
Air Springs auxiliary rear, Leveling Jacks hydraulic, automatic (NA Chevrolet Chassis), Wheels stylized aluminum	0	0	0

CAB AREA & DRIVER CONVENIENCES	29B	31C	31H
Beverage Holder, Cab Seats w/3-point adjustable seat belts, armrest, lumbar support, multiadjustable slide/recline, Cigarette Lighter/12-Volt DC Powerpoint, Cruise Control, Curtain cab divider, Mirrors exterior, manual adjust, Power Door Locks driver, passenger & main entry, Power Windows, Monitor System rearview, cable ready, Steering Wheel tilt w/power-assist, Trim Panels driver & passenger doors	S	S	S
Cab Seats (UltraLeather[™]), Mirrors exterior, electric remote w/defrost, Monitor System rearview w/single camera, LCD monitor	0	0	0

ENTERTAINMENT	29B	31C	31H
RV Radio[®] (w/Ford Chassis) AM/FM stereo/CD w/weather band, speakers (4), iPod/MP3 input, remote controls (2) one handheld, one mounted on steering wheel, Radio (w/Chevrolet Chassis) AM/FM stereo/CD, Radio Power Switch main/auxiliary, TV Enhancement Package antenna (amplified), 12-volt DC powerpoint(s), interior jack(s), coax wiring, cable input, Telephone Input modular connector, interior jack	S	S	S

ENTERTAINMENT	29B	31C	31H
Entertainment Center (Exterior) AM/FM radio, CD player w/remote, DC receptacle, AC duplex receptacle, TV jack, radio antenna, removable TV table, speakers (2), lockable compartment, Entertainment Center (Interior Front Overhead) TV AC 27" w/remote, Sony [®] Home Theater Sound System with AM/FM receiver, DVD player, amplifier, speakers (5), subwoofer, video selection system, accent rope lighting above cabinet, Satellite Dish Antenna RV digital, elevation sensing unit, manual, Sirius[®] Satellite Radio System (NA Chevrolet chassis), iPod interface connector, antenna, receiver, 6-month complimentary subscription, TV 19" LCD (Front Bunk Area) Stereo System w/AM/FM radio, CD/DVD player, alarm clock, input jack (plays MP3), headphone jack	0	0	0

INTERIOR	29B	31C	31H
Bunk front overhead w/mattress, privacy curtain, storage cabinet, bunk ladder, Ceiling fabric, Countertops thermo-formed laminate w/radius edge, Light (Shower) w/wall switch, Lights (Ceiling) incandescent w/wall switches, Light decorative dining, Roof Vent nonpowered, bedroom, Roof Vent nonpowered (front overhead bunk), powered (bath), Shades pleated (lounge, dinette & bedroom), mini blinds (bath & galley)	S	S	S
Interior Upgrade Package rope accent lighting above cabinets in galley or lounge area & bedroom, dash & beverage tray appliqué, leather laser-wave, cab carpet floor mats (Ford only), lavatory faucet single-control, sink covers, decorative picture, 2 throw pillows, pleated day/night blinds in lounge, dinette & bedroom, range backsplash, refrigerator insert (Titanium Touch™ stainless finish), Roof Vent powered ventilator fan, front overhead bunk or lounge, Windows dual glazed, thermo-insulated	0	0	0
Roof Vent nonpowered, lounge	S		S

FURNITURE	29B	31C	31H
Dinette w/access to storage below, Sofa w/access to storage below	S	S	S

GALLEY	29B	31C	31H
Faucet single-control, Moen®, Range 3-burner w/convection/microwave oven, Apollo®, Range Hood vented w/light & fan, stainless steel, Refrigerator/Freezer double-door, Norcold®	S	S	S
Countertop flip-up extension	S		S
Pantry			S
Water Filtration System cold water, galley	0	0	0

BATH	29B	31C	31H
Cabinet lavatory, Cabinet medicine, Clothes Rod removable, Faucet (Lavatory) dual-control, Faucet (Tub and/or Shower) dual-control w/flexible showerhead, Shower Door retractable, Skylight	S	S	S
Shower Door textured glass	0	0	

BEDROOM	29B	31C	31H
Bed Serta®, queen		S	S
Bed Serta, queen w/underbed storage	S		
Bedsprad pillow shams, pillows	S	S	S

EXTERIOR	29B	31C	31H
Awning Rails w/rain gutters, Door entrance w/ separate screen door, deadbolt lock, Entrance Door Step manual, Ladder , Light porch w/interior switch, Mudflaps rear, Receptacle AC duplex, Running Boards painted steel, Sidewall Skin 1-piece smooth fiberglass, Storage Compartments w/trunk liner, KeyOne™ System	S	S	S
Awning patio, vinyl, Entrance Door Step electric w/doorjamb switch, Running Boards fiberglass w/wheel lips (w/available deluxe graphics)	0	0	0
Trunk rear, backwall door, access door on the right, KeyOne System, storage bin covers (one w/folding table legs), drain hole		S	S

SYSTEMS	29B	31C	31H
HEATING & A/C – Air Conditioner (Roof) 14,800 BTU, ceiling-ducted w/wall thermostat, Furnace 30,000 BTU, low-profile	S	S	S
A/C Heat Pump w/roof A/C	0	0	0
ELECTRICAL – Auxiliary Start Circuit, Battery (Coach) Group 24 deep-cycle, Battery (Coach) Disconnect System, Dual Battery charge control (automatic), Electrical Distribution System DC fuses, AC breakers, 45-amp. electronic converter/charger, Generator Prep Kit, Monitor Panel wall-mounted, battery condition gauge, generator hourmeter gauge, generator start/stop switch, holding tank levels, LP tank level, water heater lights, water heater switch, water pump switch, water tank level, Power Cord 30-amp., 25'	S	S	S
Batteries (Coach) (2) Group 24 deep-cycle, Generator 4,000-watt, Cummins Onan® MicroQuiet™ gas, Inverter DC/AC, 300-watt (NA w/bunk)	0	0	0
PLUMBING/LP – Drain 1" water tank, Dump Valve manual, Sewer Hose 10'; stores in drain valve compartment, Tank LP , permanent mount w/gauge, TrueLevel™ Holding Tank Monitoring System, Water Heater 6-gallon, electronic ignition, LP gas, Water Hookup city, Water Pump demand, Water System Winterization Package water heater bypass valve & siphon tube, Water Tank Fill w/locking door	S	S	S
Drainage System ⁷ heated, electric, one heat pad per tank, pipe wraps, lighted on/off switch next to monitor panel (pre-wired for Canada), Wash Station exterior w/lighted pump switch, Water Heater 6-gallon, electronic ignition/110V, LP gas w/motoraid, rear auto heater & energy management system	0	0	0

SAFETY	29B	31C	31H
Airbags driver & passenger, Assist Handle exterior, Assist Bar interior, Brakelamp high-mount, Bumpers front & rear, Child Seat Tether Anchor dinette, Detectors/Alarms LP leak, smoke, carbon monoxide, Fire Extinguisher 10 BC, Ground Fault Interrupter, Light(s) courtesy w/wall switch(es), Seat Belts cab, 3-point, Seat Belts lap (in selected areas), Slideroom Master Lock Switch key activated, Window escape	S	S	S

WARRANTY ⁸	29B	31C	31H
12-month/15,000-mile basic warranty, ⁹ 36-month/36,000-mile limited warranty on structure, ⁹ 10-year limited parts & labor warranty on roof skin ⁹	S	S	S

- The height of each model is measured to the top of the tallest standard feature and is based on the curb weight of a typically equipped unit. The actual height of your vehicle may vary by several inches depending on chassis or equipment variations. Please contact your dealer for further information.
 - Outlook floorplans feature a wide-body design – over 96". In making your purchase decision, you should be aware that some states restrict access on some or all state roads to 96" in body width. Before making your purchase decision, you should confirm the road usage laws in the states of interest to you.
 - The load capacity of your motor home is designated by weight, not by volume, so you cannot necessarily use all available space when loading your motor home.
 - Capacities are based on measurements prior to tank installation. Slight capacity variations can result due to installation applications.
 - Capacities shown are tank manufacturer's listed water capacity (W.C.). Actual filled LP capacity is 80% of listing due to overfilling prevention device on tank.
 - Actual towing capacity is dependent on your particular loading and towing circumstances which includes the GVWR, GAWR, and GCWR as well as adequate trailer brakes. Please refer to the Operator's Manual of your vehicle for further towing information.
 - Not available in Canada.
 - See separate chassis warranty.
 - See your dealer for complete warranty information.
- NA Not Available
S Standard
0 Optional

Not all items available in combination. See dealer for details.

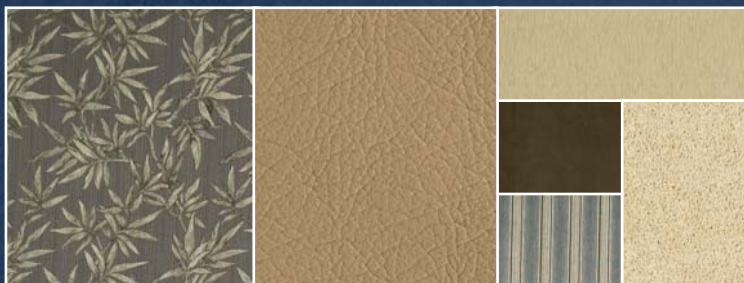
Winnebago Industries® continuing program of product improvement makes specifications, equipment, model availability, and prices subject to change without notice. Comparisons to other motor homes are based on the most recent information available at printing.

INTERIOR DECOR

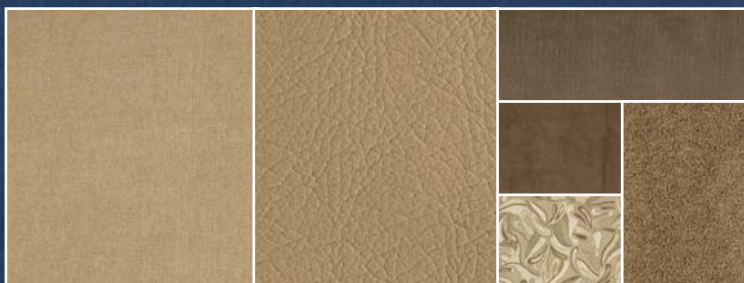
Choose from three fabric selections and two cabinet wood choices with hidden hinges.



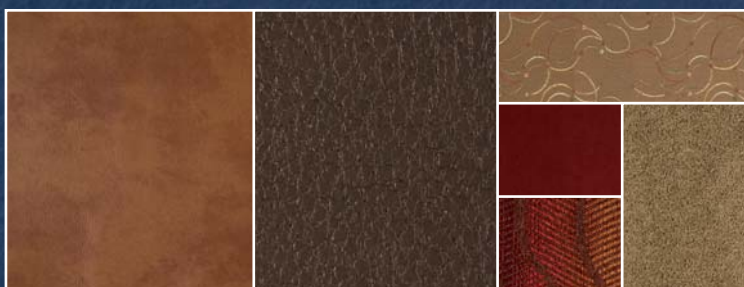
MAIN	ULTRA-LEATHER	BEDSPREAD	
		ACCENT	CARPET
		ACCENT	

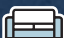


Linen Moss w/available Timber UltraLeather™



Sesame Seed w/available Timber UltraLeather



 Tuscan Sun w/available Truffle UltraLeather



Washed Maple



Honey Cherry

STANDARD GRAPHICS PACKAGE



Dark Charcoal/Khaki/Pewter/Gold

AVAILABLE DELUXE GRAPHICS PACKAGE



Bright Platinum Metallic



Light Titanium Metallic



Welcome to Winnebago Industries, Inc.
<http://www.winebagoind.com/>

WINNEBAGO INDUSTRIES

PRODUCTS RESOURCES COMPANY CLUBS-EVENTS CONTACT DEALERS ONLY [VIEW Select a Key Feature](#)

Select a category from above.

Popular Links

- Winnebago RV's
- Recreo RV's
- Key Features
- Dealer Locator

WINNEBAGO INDUSTRIES' FEATURED PRODUCTS

titaniumTOUCH
Refrigerators you won't find anywhere else.

TRUEAIR
Cools 40% Faster, Holds 10% Longer!

SIRIUS
Available Sirius Satellite Radio.

[WINNEBAGOIND.COM](http://www.winebagoind.com) Visit us on the web for more info on all of our motor homes, the latest product updates and a host of web-exclusive content.



**BUILT BY WINNEBAGO INDUSTRIES.
BUILT TO LAST.**

Winnebago motor homes are built by Winnebago Industries, the company that defined motor homes. The company that built its reputation on quality construction. The company that transformed the motor home concept into a way of life.

Today, Winnebago Industries brings that reputation for quality and its 49-year history of motor home innovation to the design and construction of every motor home. It's all a part of SuperStructure,[®] our exclusive system of proprietary structural components that instills each motor home with improved strength and durability.

SOLID FOUNDATION Steel and aluminum truss work provides a solid, flat foundation for the floor and sidewalls. Winnebago Industries engineers also take special care to distribute the weight of components to ensure proper handling and stability.



INTERLOCKING JOINTS

The floor, sidewalls and roof are all integrally connected using interlocking joints. This creates a coach body that acts as a cohesive unit for improved strength and durability.

E-COATING Winnebago Industries employs an exclusive 12-stage automotive-style dip tank process to apply an advanced electrodeposition coating on critical steel components for superior corrosion protection.



[WEB](#)

THERMO-PANEL[®] SIDEWALLS Invented by Winnebago Industries, Thermo-Panel construction combines a fiberglass panel, high-density, block-foam insulation and aluminum support structures to create some of the most durable, lightweight sidewalls in the industry.

ATTENTION TO DETAIL Whether it's sending every coach through a high pressure water tunnel to check for leaks or labeling each individual wire and bar-coding parts to save time and frustration during service, Winnebago Industries considers every detail to ensure your Winnebago motor home provides you with years of pleasure.

STRONG AS STEEL Appliances are secured directly to embedded steel plates for added safety.



1-year-old Winnebago fiberglass roof



1-year-old competitor's rubber roof

FIBERGLASS ROOF The Outlook features a crowned, one-piece fiberglass roof, backed with a 10-year limited parts-and-labor roof skin warranty. Fiberglass offers superior strength, attractiveness and durability over the rubber roofs found on many competitive models which can chalk, streak and degrade over time. Fiberglass also provides increased puncture and tear resistance.



TAKE A TOUR We're proud of our process, state-of-the-art facilities and the people who make Winnebago Industries number one. We invite you to visit our factory in Forest City, Iowa, for a first-hand look at the dedication and technology behind every motor home we build.



RECOGNIZED QUALITY The Recreation Vehicle Dealer Association annually rates RV manufacturers and awards the Quality Circle award to manufacturers who provide exceptional products, service and support. Winnebago Industries is proud to be the only manufacturer to receive this award every year since its inception.



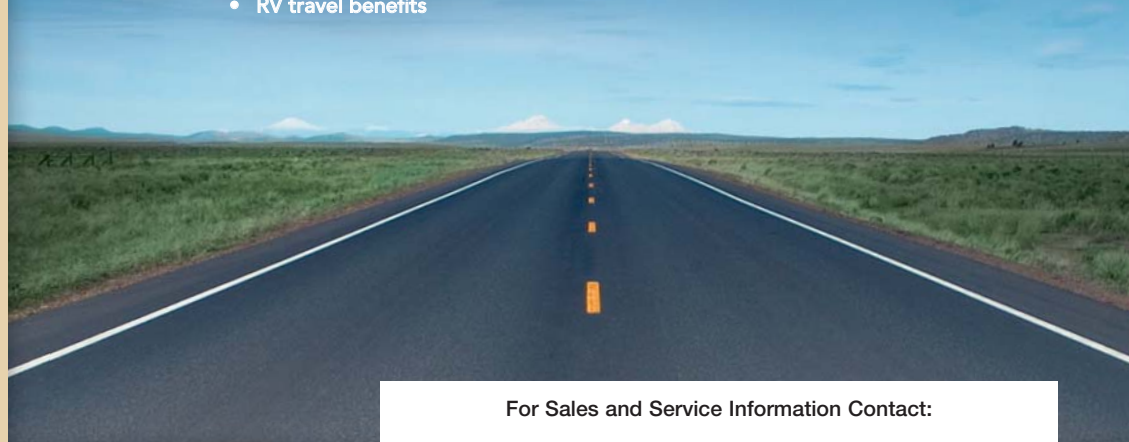
COMMITTED TO SERVICE We back our motor homes with the industry's best service after the sale.

- 12-month/15,000-mile basic limited warranty
- 36-month/36,000-mile warranty on structure
- Standard 10-year limited parts-and-labor roof skin warranty
- Complimentary 24-hour roadside assistance program
- TripSaver Fast Track Parts. TripSaver guarantees that in-stock warranty parts ship directly to your dealer within 24 hours.
- National dealer service network



WIT CLUB Winnebago owners are like family. Joining the Winnebago-Itasca Travelers is a great way to meet and travel with other Winnebago enthusiasts. Members enjoy:

- Caravans and rallies
- Local and state group activities
- RV travel benefits



For Sales and Service Information Contact:

Built proudly by



NYSE listing: WGO