



{Jamboree}

Live the unexpected.



JAMBOREE and JAMBOREE GT-Class C-2006



LIFE IS EASIER THAN YOU  
MAY THINK. TAKE A DEEP BREATH, RELAX AND  
START ENJOYING THE RIDE.  
ESCAPE TO THE PLACES YOU'VE ALWAYS  
WANTED, AND DO IT ON  
YOUR WATCH. FROM HERE ON OUT,  
YOU CALL ALL THE SHOTS.



## Jamboree Delivers.

Your travels have never been so seamless, thanks to the functional and enjoyable design of Jamboree. You'll love the large window at the dinette for an excellent view of the patio and durable mortise & tenon cabinetry for your storage needs. You'll also enjoy comfortable Flexsteel® furniture with a lifetime warranty on the frame. What more could you ask for?



**SPACIOUS OVERHEAD STORAGE**  
in the galley has adjustable shelves and allows plenty of room to store full-size plates, dishes or glasses.

**JAMBOREE'S SAFETY FEATURES**  
include a carbon monoxide detector, smoke detector, LPG detector and fire extinguisher to make your travels worry free.

**AN OPTIONAL OVERHEAD ENTERTAINMENT CENTER**  
includes a 27" TV and DVD/VCR combo with surround sound to unwind after a long day of fun (N/A on 22B).

**THE MONITOR PANEL**  
provides a central place to check the battery/holding tank levels, and turn the generator and water pump on and off.



*Jamboree 26Q shown in Olde Navy interior decor with Windsor Birch Cabinetry.*



## Take it Easy.

Jamboree provides a comfortable environment on the road so you can rest easy whenever you please. Night pleated shades keep the sunlight out for those afternoon naps, and a built in TV shelf comes complete with a 12V receptacle

and cable jacks. You'll love the integrated under-the-bed storage, perfect for extra linens or towels, and a large closet with mirrored doors that provides ample room for garments and shoes.



**A CONVENIENT POTS AND PANS DRAWER** was specifically designed for storage of large cookware.

**DELUXE ROLLER BEARING FULL EXTENSION DRAWER GUIDES**

on all the drawers throughout, give you full access to each drawer. A built in utensil tray is the perfect feature to conveniently store your silverware.

**A SPACE SAVING CLOSET** has mirrored doors and folds away for convenience. The closet is well designed to utilize space so you have plenty of room for your clothes (available on 26Q only).

**A RESIDENTIAL SIZED MEDICINE CABINET** with mirrored doors, vanity lighting and a skylight in the bathroom are very convenient features to have on the road.

**JAMBOREE'S ROOMY BEDROOM**

features an innerspring queen-size mattress, spacious overhead storage compartments and a large closet with mirrored doors, giving you all the comfort and convenience of home.



## Jamboree GT

### GT has more.

Jamboree GT offers all the practical features of Jamboree, plus some exclusive extras. Luxurious Ultraleather™ driver/passenger seats make for a comfortable journey and are a fantastic feature maximizing the GT's functionality. In the kitchen, a convection

microwave oven is a quick and easy way to cook up your favorite snack, while the fresh water filtration system is a great convenience to have on the road. You'll also enjoy a Fan-Tastic® roof fan for ventilation and deluxe fabrics modeled after the Class A Diesel line.



**THE LARGE DINETTE** comfortably seats 4 and features built in cup-holders and a large window for a great view of the patio.



**THE LARGE ENTRY ASSIST HANDLE** is long, enabling people of all heights to use it. It's also very sturdy and makes for easy entry and exit.

**A FOLD-OUT SNACK TRAY** with two cup-holders in GT's comfortable sofa sleeper is convenient for holding drinks and food.



**8 CU. FT. DOMETIC® REFRIGERATOR** has elegant wood inserts and can easily accommodate your food and drink needs.



**OVERHEAD STORAGE** is a good place to keep books, board games or anything else to entertain on the road.

**PULL-OUT BASKETS** are convenient and removable for easy loading and unloading.



*Shown w/optional entertainment center  
with home theater system.*



*Jamboree GT 31W shown in Tropics interior decor with Windsor Birch Cabinetry.*





### Extra Comfort.

GT offers spectacular features in the bedroom like a comfortable queen size innerspring mattress and night pleated shades to keep out the sun so you can rest peacefully anytime. Overhead storage is an ideal place to

store extra bedding or clothes, and you'll love the deluxe fabric choices for the utmost in style. In the bathroom you'll enjoy a large residential-sized sink, towel racks mounted on the bath door and an elegant glass enclosed shower.



**AN ELEGANT GLASS ENCLOSED SHOWER** features a flexible hose extension with water saver feature that helps to conserve your water supply while you're out camping (31M shown).



**A WELL APPOINTED BATHROOM** with mirrored door, vanity lighting, residential-sized medicine cabinet, 12 volt fan and plenty of storage, is just like home.



**OVERHEAD STORAGE** gives you plenty of room to store extra bedding or towels.

**THE BEDROOM TV SHELF** folds away for your convenience and includes 120V receptacles and cable jacks (TV not included).



**GT'S LARGE WARDROBE AREA** provides plenty of space to hang garments, and the drawers feature deluxe roller bearing full extension drawer guides, allowing you to bring more than enough clothing for all your adventures.



## Jamboree

**THICK TUFF-COAT® EXTERIOR FIBERGLASS SIDEWALLS** are Vacu-bonded® into a strong composite structure, as opposed to competitors' thin fiberglass laminate.

**DRIP RAIL MOLDINGS** channel excess water through spouts to the rear and front of the unit. This helps to prevent sidewall streaking.

**OUR TUFF-PLY ROOF** is UV resistant, durable, easy to clean, and doesn't scratch like many competitors' fiberglass or aluminum roofs.



**POWDER COATED STEEL RUNNING BOARDS** are sleek, stylish and add to Jamboree's curb appeal.

\*Vehicle shown in Olde Navy.

## Jamboree GT (All the Jamboree offers plus more.)

**EXTERIOR AWNING** is standard on the GT and provides great protection from the weather, so you can enjoy your surroundings rain or shine.

**ONE-PIECE FIBERGLASS FRONT CAP** is stylish and aerodynamic.

**BASEMENT STORAGE** features aluminum doors with struts and paddle latches for easy access to all your travel gear.

**HEATED HOLDING TANKS** help to prevent winter freezing and are positioned in the bottom center platform to increase stability.

**ALCOA® ALUMINUM WHEELS** are standard, which give the vehicle a stylish look.



\*Vehicle shown in Tropics.



**EXTERIOR STORAGE COMPARTMENTS** are very spacious, convenient and great for storing camping equipment and outdoor gear.

**PASS THROUGH STORAGE** allows you to carry oversized items. It also contains a bin to store ice for cold drinks (available on 26Q and 29V).

**A FOLD OUT TABLE** is a nice convenience, which is included in the exterior storage compartment (available on 26Q).

**THE EXTERIOR SHOWER (optional)** provides an excellent place to rinse off after a day of activities. The GT also offers a central utility compartment.

**THE DRIVER'S COCKPIT** includes an AM/FM radio with CD player, integrated cup holders, storage console and an optional back-up monitor with one-way audio (GT shown with Ultraleather™ seats, dash application and power heated side mirrors).

**EXTERIOR EZ-STORE STORAGE COMPARTMENTS** move with the slide-out in order to ensure easy access to all of your stored items (available on select models).

**THE EXTERIOR ENTERTAINMENT CENTER** includes a weather resistant AM/FM CD player and 12V plug with cable hook-up (strut-assist door with TV shelf available on select models).

## SIX EXTERIORS, SIX INTERIORS. THE CHOICE IS YOURS.

For 2006, choose from diverse exterior graphics and interior fabric motifs. Three for Jamboree and three for Jamboree GT.

### JAMBOREE EXTERIOR/INTERIOR COLOR CHOICES



#### OLDE NAVY

Living/Dining Room

Bedroom



*Sofa Bed & Dinette Cushions*



*Swivel Chair & Living Room Valance*



*Bedspread*



*Pillow Shams*



#### SHADOW OLIVE

Living/Dining Room

Bedroom



*Sofa Bed & Dinette Cushions*



*Swivel Chair & Living Room Valance*



*Bedspread*



*Pillow Shams*



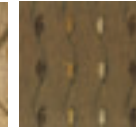
#### PALOMINO

Living/Dining Room

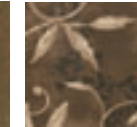
Bedroom



*Sofa Bed & Dinette Cushions*



*Swivel Chair & Living Room Valance*



*Bedspread*



*Pillow Shams*

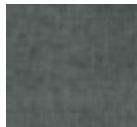
### JAMBOREE GT EXTERIOR/INTERIOR COLOR CHOICES



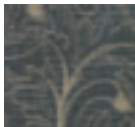
#### BLUE CREST

Living/Dining Room

Bedroom



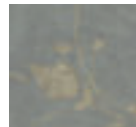
*Sofa Sleeper*



*Swivel Chair & Dinette Cushions*



*Bedspread & Pillow Shams*



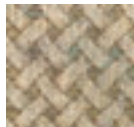
*Throw Pillow*



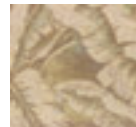
#### TROPICS

Living/Dining Room

Bedroom



*Sofa Sleeper*



*Swivel Chair & Dinette Cushions*



*Bedspread & Pillow Shams*



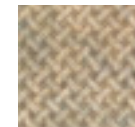
*Throw Pillow*



#### LATTE

Living/Dining Room

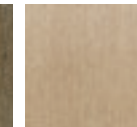
Bedroom



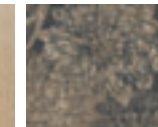
*Sofa Sleeper*



*Swivel Chair & Dinette Cushions*



*Bedspread & Pillow Shams*



*Throw Pillow*

## What Drives You?

Maybe it's feeling like you're the only one on Earth. Perhaps it's the unique sense of closeness with the great outdoors. Or, it might be the joy that comes from spending quality time with family and friends. Whatever the reason, we know that you have a strong drive to experience everything that comes with spending time on the road. And for more than 50 years, we've shared that passion with you. Because we're RV enthusiasts ourselves, you can see our passion in the vehicles we design and build. Own a Fleetwood, and you'll feel like you're not just traveling, but embarking on an experience unlike any other. Set your own course for adventure and get out there and explore the world around you. Once you do, you'll see what it is that drives us — it's you.



**RV OWNERCARE\*** is a limited one-year/15,000-mile coach warranty and three-year/50,000-mile structural warranty, whichever occurs first, and it is fully transferable for the first 12 months. RV OWNERCARE is one of the RV industry's most comprehensive programs and includes systems, appliances, components and construction, with no deductible and no service charge. RV OWNERCARE coverage is provided from a company that will be around in the future to service your needs. See your nearest Fleetwood dealer for a full explanation of benefits and restrictions.

**FLEETWOOD TRAVELCADE CLUB** As a Fleetwood owner, you're eligible to become a member of our owners' group, Fleetwood Travelcade Club. It's a perfect way to meet other Fleetwood owners who love to travel across America and share in the RV lifestyle. Call (877) 577-2560 and join the fun! Or visit [www.fleetwood.com/clubs](http://www.fleetwood.com/clubs) to learn more.

**FLEETWOODRV.COM** To locate a dealer near you, visit our website or call 1-800-444-4905. We can also be contacted at Fleetwood Customer Relations, P.O. Box 7638, Riverside, CA 92513-7638.

**IMPORTANT—PLEASE READ** Product information, photography and illustrations included in this publication were as accurate as possible at the time of printing. For further product information and changes, please visit our website at [www.fleetwoodrv.com](http://www.fleetwoodrv.com) or contact your local Fleetwood dealer. Prices, materials, design and specifications are subject to change without notice. All weights, fuel, liquid capacities and dimensions are approximate. Fleetwood has designed its recreational vehicles to provide a variety of uses for customers. Each vehicle features optimal seating, sleeping, storage and fluid capacities. The user is responsible for selecting the proper combination of loads (i.e.: occupants, equipment, fluids, cargo, etc.) to ensure that the vehicle's capacities are not exceeded.

Your local Fleetwood dealer is:



[www.fleetwoodrv.com](http://www.fleetwoodrv.com)

\*For complete info see your Fleetwood dealer. © 2005. Fleetwood Enterprises, Inc. Printed in the USA. Inventory control number JA06B1 3/05.





JAMBOREE-Floor Plans, Standard Features and Options

# Jamboree



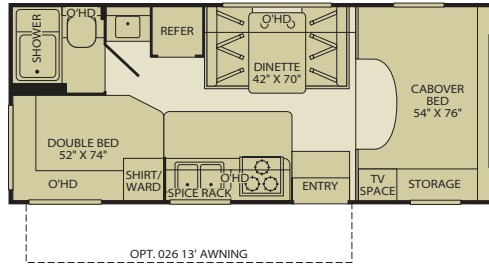
JAMBOREE-Class C-2006



# Floor Plans

## 22B

Sleeping Accommodations: 5\*

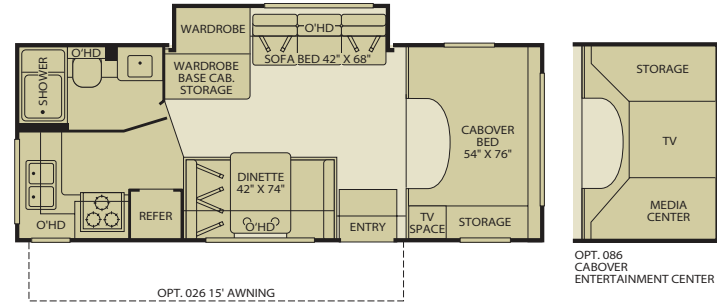


Interior Storage Capacity: 48 cu. ft.  
Exterior Storage Capacity: 30 cu. ft.

## 23E

Single Slide-Out

Sleeping Accommodations: 4\*

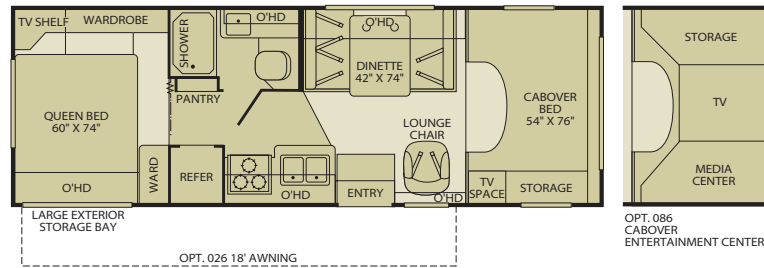
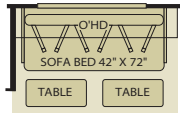


Interior Storage Capacity: 55 cu. ft.  
Exterior Storage Capacity: 15 cu. ft.

OPT. 086  
CABOVER  
ENTERTAINMENT CENTER

## 26Q

Sleeping Accommodations: 5\*

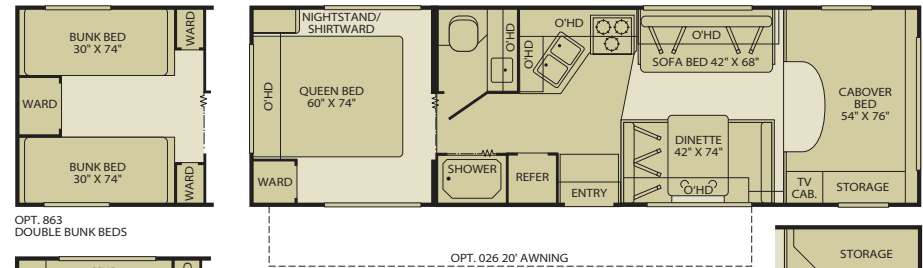


Interior Storage Capacity: 57 cu. ft.  
Exterior Storage Capacity: 104 cu. ft.

OPT. 086  
CABOVER  
ENTERTAINMENT CENTER

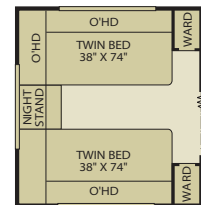
## 29V

Sleeping Accommodations: 6\*



Interior Storage Capacity: 85 cu. ft.  
Exterior Storage Capacity: 66 cu. ft.

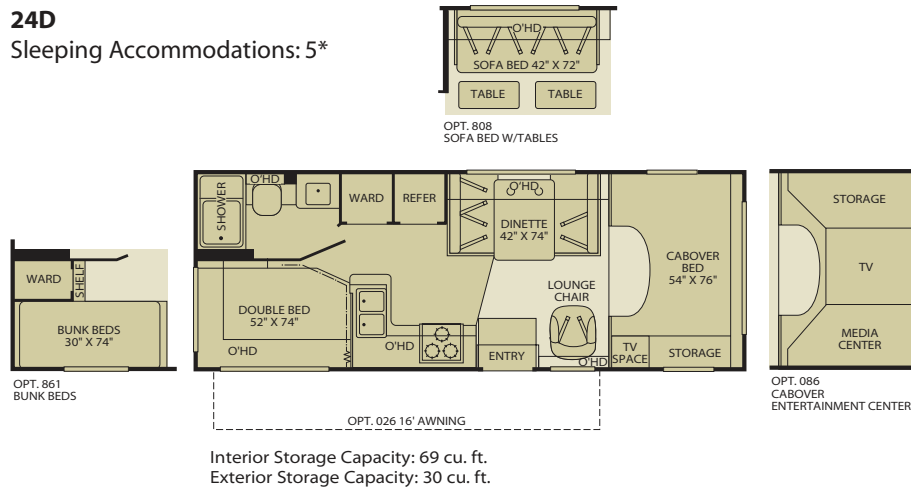
OPT. 863  
DOUBLE BUNK BEDS



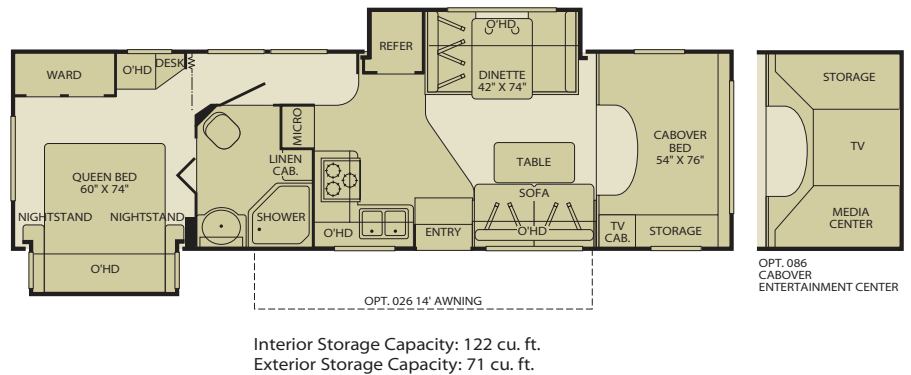
OPT. 086  
CABOVER  
ENTERTAINMENT CENTER

Seatbelt configuration may vary depending on options chosen.

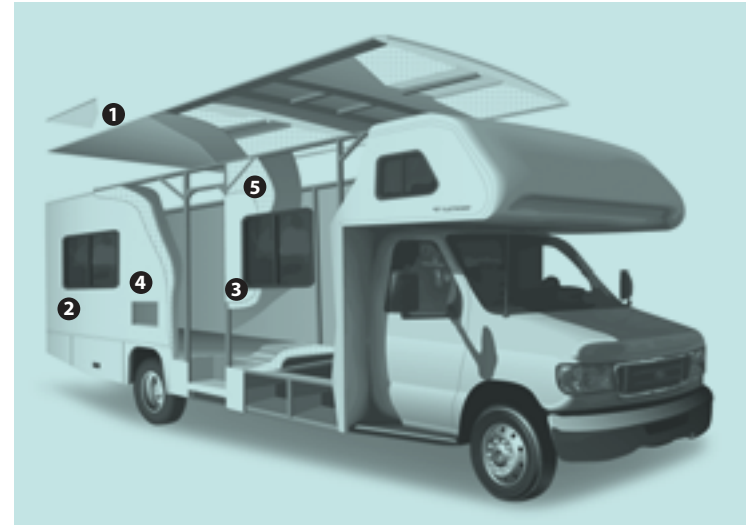
**24D**  
Sleeping Accommodations: 5\*



**31M**  
Double Slide-Out  
Sleeping Accommodations: 5\*



\*Sleeping accommodations are based on designed sleeping areas and may be greater than Sleeping Capacity Weight Rating (SCWR) found on the Cargo Carrying Capacity label located in each RV. Sleeping accommodations are based on standard layout. Optional furniture may increase or decrease sleeping accommodations.



Setting the Standard in Motor Home Quality.

Fleetwood® prototypes are exposed to thousands of miles of durability testing. Those components that don't survive are redesigned until they do. This sets our standard in safety and durability.

- 1** Royal Tuff-Ply roofing technology is one of the most durable roofing materials on the market and also reflects sunlight to reduce chalking. White roof material minimizes heat build-up, keeping the temperature cool and comfortable.
- 2** Reliable TuffPEX® plumbing runs throughout each vehicle creating a durable seal on all internal tubing. TuffPEX® assures water flow and functions in colder temperatures. The TuffPEX® system is an industry leader in quality plumbing.
- 3** For each outer wall, Fleetwood uses one seamless, solid piece of its exclusive Tuff-Coat® fiberglass composite. It resists UV rays, cracks and impacts. Our products look newer longer and that's a big plus at resale time.
- 4** To assure a strong, weather-resistant structure, Fleetwood Vacu-bonds® all sidewalls, floors and ceilings to a durable aluminum or steel frame. The Vacu-bond® process is unmatched by many competitors.
- 5** High Density block foam insulation is precisely cut to fit between framing members. This insures maximum insulation throughout the vehicle.

Drawings are for illustrative purpose only to highlight aspects of motor home construction. Actual motor home design depends on model and is subject to change.

## Standard Features

### Interior

#### THROUGHOUT

- **Deluxe Roller Bearing, Full Extension Drawer Guides**
- **Quality Constructed Furniture by Flexsteel®**
- 12V Water Pump, Demand Operation
- 13,500 BTU Ducted Air Conditioner (22B, 23E, 24D & 26Q)
- 15,000 BTU Ducted Air Conditioner (29V & 31M)
- 25,000 BTU Furnace, Auto-Ignition, Ducted, Wall Mtd. Thermostat (22B, 23E & 24D)
- 30,000 BTU Furnace, Auto-Ignition, Ducted, Wall Mtd. Thermostat (26Q, 29V & 31M)

#### DRIVER CONVENIENCE

- **3-Point Seat Belts at Driver & Front Passenger Seats**
- **In Dash AM/FM Radio w/CD Player**
- 4 Speakers, (2 in Cab Doors, 2 Ceiling Mounted)

#### LIVING ROOM

- **54" X 76" Cabover Bed with Patented Slider Bunk Operation, Privacy Curtain, Roof Vent & Sliding Side Windows**
- **Day/Night Pleated Shades**
- **Dinette, Convertible for Sleeping**
- **Large Viewing Window at Dinette**
- **Sofabed w/Armrests & Snack**

#### GALLEY

- **Drawer Boxes w/Real Wood Construction**
- **Kitchen Convenience Package: Spice Rack, Knife Holder, Paper Towel Holder, Sink Cover/Cutting Board, Silverware Drawer**

#### BEDROOM

- **Innerspring Mattress (N/A on 23E)**
- **Night Pleated Shades (N/A on 23E)**
- **Roof Vent (N/A on 23E)**

#### BATHROOM

- **Bath Door w/Residential Passage Lock and Towel Bars**
- **Skylight/Roof Vent w/12V Fan**
- Marine Toilet
- Medicine Cabinet w/Wood

#### SAFETY / CONVENIENCE

- 10 ABC Fire Extinguisher
- Carbon Monoxide Detector/Alarm

- 6 Gallon Water Heater, Electronic Ignition, Propane
- Auxiliary Battery, Disconnect Switch on Monitor Panel
- Carpet w/Pad & Vinyl Flooring in Galley & Lavy
- GFI Circuit Protection in Galley, Lavy, Patio Receptacles
- Monitor Panel: Auxiliary & Chassis Battery Condition Check, Holding Tank Levels, Fresh Water Tank Level, Propane Tank Level, All Level Readings in 1/4 Increments, Direct Spark Ignition Water Heater Switch w/Lighted Indicator, Water Pump

- Cabover Bunk Ladder (Supplied w/Cabover Bunk Arrangement)
- Chassis Supplied: Heating & Air Conditioning, Cigarette Lighter/12V Power Supply, Intermittent Windshield Wipers, Power Steering w/Tilt Wheel, Cruise Control,

#### Tray/Convertible for Sleeping (23E & 29V)

- 2 Cup-Holders in Dinette
- Ceiling Lights w/Wall Switches at Entry & Lavy
- Dinette/Refrigerator Slide-Out w/Debris Awning (31M)
- Lap Belts at Select Living Area

#### Microwave Oven w/Electronic Touch Pad

- 3-Burner Range w/High-Output/Piezo Ignitor & Oven
- Decor Wall Border
- Dometic® 6 cu. ft.

#### TV Shelf w/12V & Cable Jacks, AC Receptacle (24D, 26Q and 29V)

- Adjustable Reading Lights (N/A on 23E)

- Construction
- Molded ABS Shower/Tub Surround/Pan
- Rectangular Sink w/Dual Control Faucet

- Large Entry Assist Handle
- Propane Detector/Alarm

- Switch w/On Indicator Light, Battery Disconnect Switch, Generator Start/Stop Switch & Hour Meter
- Mortise & Tenon Doors w/Hardwood Frames
- Water Heater Bypass Valve-Fresh Water System Winterization
- Water Pump Controller, On/Off Switches at Galley & Lavy
- Windsor Birch Woodgrain Cabinetry

- Sunvisors (2), Dome Light, Beverage Cup-Holders, Map Pocket
- Driver/Front Passenger Airbag Supplemental Restraint System
- Flexsteel® Adjustable/Reclining Bucket Seats w/Armrest (Ford®)
- Power Windows & Door Locks

#### Seating Positions

- Swivel Base Lounge Chair w/Dual Lock Position (24D & 26Q)
- Telephone/Modem Jack w/Exterior Jack Input
- Wardrobe/Sofa Slide-Out w/Debris Awning (23E)

#### Refrigerator/Freezer

- Flip-Top Extension (N/A on 23E)
- Rangehood w/Light & Fan
- Residential Size Double Bowl Sink
- Single Lever Faucet

- Bedspread w/Pillow Shams (N/A on 23E)
- Double Bed (22B & 24D)
- Queen Bed (26Q, 29V & 31M)

- Shower Head w/Flexible Hose Extension
- Wall Mounted Mirror

- Smoke Detector/Alarm

### Exterior

#### THROUGHOUT

- **High-Gloss Tuff-Coat® Smooth Fiberglass Exterior**
- **Onan® 4.0kW Microquiet Generator (2.8 kW on 22B)**

#### AUTOMOTIVE

- **Chevy® Express/Workhorse™ Chassis, 6.0L Vortec™ V8 w/300 HP, Dual Airbags, 4W Anti-Lock Brakes, Automatic 4-Speed Transmission w/Overdrive**
- **Ford® E450 Chassis, 6.8L Triton® V10 w/305 hp, Dual Airbags, 4W Anti-Lock Brakes, Automatic 5-Speed Transmission**

#### SAFETY / CONVENIENCE

- **High Mounted Large Taillights**
- **Radius Tinted Windows**
- 30-Amp, 30' Long Shore-Line Power Cord, Compartment Storage

#### STORAGE

- **Large, Multi-Door Storage Bay Compartment Access w/Smaller Storage Wells for Convenient Cargo Organization, Strut**

#### BODY STRUCTURE

- **Royal Tuff-Ply Radius Roof w/Ducted A/C**
- **Vacu-bond® Hull Lamination Process**
- 26" Wide Radius Entry Door
- Corrosion Resistant Aluminum

- **Outstanding Exterior Graphics and Styling**
- City Water Hook-Up
- Rear Ladder

#### w/Overdrive

- 12V Auxiliary Battery
- AC/DC Load Center w/12V Converter/Battery Charger
- Auxiliary Emergency Start Assist Switch on Dash
- Stainless Steel Wheel Liners
- Trailer Hitch w/7 Point Electrical Hook-Up†

- AC Duplex GFI Receptacle on Patio Side
- Amber Porch Light w/Interior Switch

#### Assisted Doors (26Q)

- Insulated Locking Luggage Doors w/Thumb Latch
- Molded Cross-Link Polyethylene

- Tube Hull Framing
- Molded Front Transition Trim
- Molded Rear Wall/Ceiling Transition Trim
- Molded Rear Wheel Trim Flares
- Powder Coated, Steel

- Sewer Hose Compartment Located Near Holding Tank Dump Valves
- Water Tank Drain

† The chassis manufacturer recommends the installation of a supplemental brake control system to activate the brakes on the vehicle or trailer you are towing. Hitch receiver ratings expressed are maximum for the hitch receiver installed and may require the purchase of additional equipment that is dependant on the weight of the towed load. Consult with hitch receiver manufacturer for further information.

- Breakaway Side Mirrors
- Entry Door w/Screen Door & Deadbolt Lock

- Battery Compartment Container & Lid Easy Access for Battery Maintenance & Electrical Components Check

- Running Boards
- Side-Walls Framed with 1 1/2" Aluminum Tubing
- Steel Powder-Coated Bumper

## Options

#### EXTERIOR

- Dual 6V Deep Cycle Auxiliary Batteries
- Dual-Pane Windows (N/A w/Options 086, 808 or 861)
- Electric Power Entry Step
- Exterior Entertainment Center w/AM/FM/CD Player and Auxiliary Speaker, Coax Cable & 12V/110 Receptacles
- Full Size Spare Tire w/Carrier
- Holding Tank Heater

- Patio Awning Cover
- Power/Heated Side Mirrors
- Wash Unit w/Dual Control Faucet, Flexible Shower Hose & Water Pump On/Off Switch

#### LIVING ROOM

- 19" Color TV w/Remote & DVD/VCR Combo
- Cabover Entertainment System: 24" TV, Hi-Fi VCR/DVD Combo & Media Storage Center (N/A on 22B)

#### GALLEY

- Water Filtration System

#### BEDROOM

- Bunk Beds w/Cushions (24D)
- Convertible Sofa w/Table (24D & 26Q)
- Double Bunk Beds w/Cushions (29V)
- Twin Beds (29V)

#### THROUGHOUT (Interior)

- 15,000 BTU A/C with Heat Pump (N/A on 22B)

## Fleetwood Advantages

- **Complete TuffPEX® Plumbing System**
- **Royal Tuff-Ply UV-Resistant Heat/Cold Insulated Roofing Technology**
- **Vacu-Bond® Floor**
- **Vacu-Bond® Walls w/Smooth High-Gloss Exterior Tuff-Coat® Fiberglass**



## Weights and Measurements

FLOOR PLAN	22B	23E	24D	26Q	29V	31M
<b>Chassis</b>	Chevy® Express	Ford® E450/ Chevy® Express	Ford® E450/ Chevy® Express	Ford® E450/ Chevy® Workhorse™	Ford® E450/ Chevy® Workhorse™	Ford® E450/ Chevy® Workhorse™
<b>Engine Displacement (Liters)</b>	6.0	6.8/6.0	6.8/6.0	6.8/6.0	6.8/6.0	6.8/6.0
<b>Wheelbase (Inches)</b>	139	158/159	158/159	176/177	198/199	218/219
<b>GVWR (lbs)<sup>1</sup></b>	12,300	14,050/12,300	14,050/12,300	14,050/14,050	14,050/14,050	14,050/14,050
<b>Front GAWR (lbs)<sup>2</sup></b>	4,300	4,600/4,300	4,600/4,300	4,600/4,600	4,600/4,600	4,600/4,600
<b>Rear GAWR (lbs)<sup>2</sup></b>	8,600	9,450/8,600	9,450/8,600	9,450/9,450	9,450/9,450	9,450/9,450
<b>Base Weight (lbs)<sup>3</sup></b>	9,300	10,119/9,806	9,990/9,677	10,702/10,550	10,850/10,700	11,860/11,710
<b>GCWR (lbs)<sup>4</sup></b>	15,800	19,050/15,800	19,050/15,800	19,050/17,550	19,050/17,550	17,550/17,550
<b>Hitch Rating Weight (lbs)<sup>†</sup></b>	3,500	5,000/3,500	5,000/3,500	5,000/3,500	5,000/3,500	3,500/3,500
<b>Tongue Weight (lbs)<sup>†</sup></b>	350	500/350	500/350	500/350	500/350	350/350
<b>Fuel Capacity (gal)</b>	35	55/55	55/55	55/55	55/55	55/55

### DIMENSIONS AND CAPACITIES

<b>Overall Length<sup>5</sup></b>	23'1"	24'0"/24'11"	25'0"/25'11"	27'0"/27'11"	30'0"/30'11"	32'1"/33'0"
<b>Overall Height (with A/C)</b>	10'9"	10'9"	10'9"	10'9"	10'9"	11'4"
<b>Overall Width (maximum)<sup>6,7</sup></b>	102"	102"	102"	102"	102"	102"
<b>Interior Height (maximum)</b>	79"	79"	79"	79"	79"	79"
<b>Interior Width (maximum)</b>	96"	96"	96"	96"	96"	96"
<b>Fresh Water Holding Tank (gal)</b>	30	35	30	30	30	30
<b>Grey Water Holding Tank (gal)</b>	36	36	36	34	37	37
<b>Black Water Holding Tank (gal)</b>	35	35	35	36	37	37
<b>Appliance Propane Tank (gal) (WC)<sup>8</sup></b>	14	14	14	14	14	14
<b>Water Heater Tank (gal)</b>	6	6	6	6	6	6

**Liquid Weight Reference:** Water (gal) = (8.3 lbs/3.8 kgs) Fuel (gal) = (6.1 lbs/2.8 kgs) Propane (gal) = (4.2 lbs/1.9 kgs)

**Metric Conversion:** Multiply pounds x 0.453 to obtain kilograms. Multiply gallons x 3.785 to obtain liters.

CHASSIS	FORD® E450	CHEVY® EXPRESS/CHEVY® WORKHORSE™
<b>Alternator Amps:</b>	130 Amp	145 Amp
<b>Engine:</b>	6.8L Triton® V10	6.0L Vortec™ V8
<b>Horsepower:</b>	305 HP	300 HP
<b>Transmission:</b>	5-Speed Automatic w/Overdrive 5R110W	4-Speed Automatic w/Overdrive 4L80E
<b>Torque:</b>	420 lb-ft @ 3250 RPM	360 lb-ft @ 3200 RPM

1. GVWR (Gross Vehicle Weight Rating) is the maximum permissible weight of this fully loaded motor home. The GVWR is equal to or greater than the sum of the unloaded vehicle weight plus the cargo carrying capacity.

2. GAWR (Gross Axle Weight Rating) is the maximum permissible loaded weight a specific axle is designed to carry.

3. Base Weight is the estimated weight of the motor home without fuel, options, water, cargo or passengers.

4. GCWR (Gross Combined Weight Rating) is the value specified by the motor home manufacturer as the maximum allowable loaded weight of this motor home with its towed vehicle. Towing and braking capacities may be different. Refer to Fleetwood and chassis manufacturer's manuals for complete information.

5. Length taken from front bumper to rear bumper (excludes accessories).

6. Excludes safety equipment and awnings.

7. Motor homes feature a body-width over 96" which will restrict your access to certain roads. Before purchasing, you should research any state and/or province road laws which may affect your usage.

8. Tank manufacturer's listed water capacity (WC). Actual propane capacity is 80% of water listing as required by the safety code.

† The chassis manufacturer recommends the installation of a supplemental brake control system to activate the brakes on the vehicle or trailer you are towing. Hitch receiver ratings expressed are maximum for the hitch receiver installed and may require the purchase of additional equipment that is dependant on the weight of the towed load. Consult with hitch receiver manufacturer for further information.

*IMPORTANT — PLEASE READ: Product information, photography and illustrations included in this publication were as accurate as possible at the time of printing. For further product information and changes, please visit our website at [www.fleetwoodrv.com](http://www.fleetwoodrv.com) or contact your local Fleetwood dealer. Prices, materials, design and specifications are subject to change without notice. All weights, fuel, liquid capacities and dimensions are approximate. Fleetwood has designed its recreational vehicles to provide a variety of uses for its customers. Each vehicle features optimal seating, sleeping, storage and fluid capacities. The user is responsible for selecting the proper combination of loads (i.e. occupants, equipment, fluids, cargo, etc.) to ensure that the vehicle's capacities are not exceeded.*

## What Drives You?

Maybe it's feeling like you're the only one on Earth. Perhaps it's the unique sense of closeness with the great outdoors. Or, it might be the joy that comes from spending quality time with family and friends. Whatever the reason, we know that you have a strong drive to experience everything that comes with spending time on the road. And for more than 50 years, we've shared that passion with you. Because we're RV enthusiasts ourselves, you can see our passion in the vehicles we design and build. Own a Fleetwood, and you'll feel like you're not just traveling, but embarking on an experience unlike any other. Set your own course for adventure and get out there and explore the world around you. Once you do, you'll see what it is that drives us — it's you.



**RV OWNERCARE\*** is a limited one-year/15,000-mile coach warranty and three-year/50,000-mile structural warranty, whichever occurs first, and it is fully transferable for the first 12 months. RV OWNERCARE is one of the RV industry's most comprehensive programs and includes systems, appliances, components and construction, with no deductible and no service charge. RV OWNERCARE coverage is provided from a company that will be around in the future to service your needs. See your nearest Fleetwood dealer for a full explanation of benefits and restrictions.

**FLEETWOOD TRAVELCADE CLUB** As a Fleetwood owner, you're eligible to become a member of our owners' group, Fleetwood Travelcade Club. It's a perfect way to meet other Fleetwood owners who love to travel across America and share in the RV lifestyle. Call (877) 577-2560 or visit [www.fleetwood.com/clubs](http://www.fleetwood.com/clubs) to learn more and join the fun!

**FLEETWOODRV.COM** To locate a dealer near you, visit our website or call 1-800-444-4905. We can also be contacted at Fleetwood Customer Relations, P.O. Box 7638, Riverside, CA 92513-7638.

**IMPORTANT—PLEASE READ** Product information, photography and illustrations included in this publication were as accurate as possible at the time of printing. For further product information and changes, please visit our website at [www.fleetwoodrv.com](http://www.fleetwoodrv.com) or contact your local Fleetwood dealer. Prices, materials, design and specifications are subject to change without notice. All weights, fuel, liquid capacities and dimensions are approximate. Fleetwood has designed its recreational vehicles to provide a variety of uses for customers. Each vehicle features optimal seating, sleeping, storage and fluid capacities. The user is responsible for selecting the proper combination of loads (i.e.: occupants, equipment, fluids, cargo, etc.) to ensure that the vehicle's capacities are not exceeded.

Your local Fleetwood dealer is:



[www.fleetwoodrv.com](http://www.fleetwoodrv.com)

\*For complete info see your Fleetwood dealer. ©2005. Fleetwood Enterprises, Inc. Printed in the USA. Inventory control number JA06F2 10/05.

