

# GEORGETOWN

THE ADVENTURE BEGINS  
BY FOREST RIVER



# YOUR SECOND HOME ON THE ROAD.



MODEL 349XL: BIRCH

Stylish, spacious and comfortable surroundings say a lot about how you head down the road. No compromises in your quality of living need to be made in your quest to travel the America you always dreamed of seeing. Georgetown takes you there with all the convenience of home.

## ROYAL COMFORTS.

At the day's end, you will appreciate our spacious and comfortable bedroom suites. Dual purpose lamps are stylish and swivel for ease of reading. 110 volt plugs are conveniently located at each night stand. All Georgetown bedrooms have a 20" flat screen TV to make viewing easy. Lift up the bed and what do you find? More storage! Compare and you will find all Georgetown models have tremendous amounts of drawers and closet space.



## JUST LIKE HOME.

The model 370 features his and hers sinks, medicine cabinets and linen closets. The faux marble offered with the XL package enhances the feeling of true luxury.

04

05

06

07

08

09

10

11

12

13

14

15

16

17

18

19

20

21

22

23

24

25

26

27

28

29

30

31

32

33

34

35

36

37

38

39

40

41

42

43

44

45

46

47

48

49

50

51

52

53

54

55

56

57

58

59

60

61

62

63

64

65

66

67

68

69

70

71

72

73

74

75

76

77

78

79

80

81

82

83

84

85

86

87

88

89

90

91

92

93

94

95

96

97

98

99

100

101

102

103

104

105

106

107

108

109

110

111

112

113

114

115

116

117

118

119

120

121

122

123

124

125

126

127

128

129

130

131

132

133

134

135

136

137

138

139

140

141

142

143

144

145

146

147

148

149

150

151

152

153

154

155

156

157

158

159

160

161

162

163

164

165

166

167

168

169

170

171

172

173

174

175

176

177

178

179

180

181

182

183

184

185

186

187

188

189

190

191

192

193

194

195

196

197

198

199

200

201

202

203

204

205

206

207

208

209

210

211

212

213

214

215

216

217

218

219

220

221

222

223

224

225

226

227

228

229

230

231

232

233

234

235

236

237

238

239

240

241

242

243

244

245

246

247

248

249

250

251

252

253

254

255

256

257

258

259

260

261

262

263

264

265

266

267

268

269

270

271

272

273

274

275

276

277

278

279

280

281

282

283

284

285

286

287

288

289

290

291

292

293

294

295

296

297

298

299

300

301

302

303

304

305

306

307

308

309

310

311

312

313

314

315

316

317

318

319

320

321

322

323

324

325

326

327

328

329

330

331

332

333

334

335

336

337

338

339

340

341

342

343

344

345

346

347

348

349

350

351

352

353

354

355

356

357

358

359

360

361

362

363

364

365

366

367

368

369

370

371

372

373

374

375

376

377

378

379

380

381

382

383

384

385

386

387

388

389

390

391

392

393

394

395

396

397

398

399

400

401

402

403

404

405

406

407

408

409

410

411

412

413

414

415

416

417

418

419

420

421

422

423

424

425

426

427

428

429

430

431

432

433

434

435

436

437

438

439

440

441

442

443

444

445

446

447

448

449

450

451

452

453

454

455

456

457

458

459

460

461

462

463

464

465

466

467

468

469

470

471

472

473

474

475

476

477

478

479

480

481

482

483

484

485

486

487

488

489

490

491

492

493

494

495

496

497

498

499

500

501

502

503

504

505

506

507

508

509

510

511

512

513

514

515

516

517

518

519

520

521

522

523

524

525

526

527

528

529

530

531

532

533

534

535

536

537

538

539

540

541

542

543

544

545

546

547

548

549

550

551

552

553

554

555

556

557

558

559

560

561

562

563

564

565

566

567

568

569

570

571

572

573

574

575

576

577

578

579

580

581

582

583

584

585

586

587

588

589

590

591

592

593

594

595

596

597

598

599

600

601

602

603

604

605

606

607

608

609

610

611

612

613

614

615

616

617

618

619

620

621

622

623

624

625

626

627

628

629

630

631

632

633

634

635

636

637

638

639

640

641

642

643

644

645

646

647

648

649

650

651

652

653

654

655

656

657

658

659

660

661

662

663

664

665

666

667

668

669

670

671

672

673

674

675

676

677

678

679

680

681

682

683

684

685

686

687

688

689

690

691

692

693

694

695

696

697

698

699

700

701

702

703

704

705

706

707

708

709

710

711

712

713

714

715

716

717

718

719

720

721

722

723

724

725

726

727

728

729

730

731

732

733

734

735

736

737

738

739

740

741

742

743

744

745

746

747

748

749

750

751

752

753

754

755

756

757

758

759

760

761

762

763

764

765

766

767

768

769

770

771

772

773

774

775

776

777

778

779

780

781

782

783

784

785

786

787

788

789

790

791

792

793

794

795

796

797

798

799

800

801

802

803

804

805

806

807

808

809

810

811

812

813

814

815

816

817

818

819

820

821

822

823

824

825

826

827

828

829

830

831

832

833

834

835

836

837

838

839

840

841

842

843

844

845

846

847

848

849

850

851

852

853

854

855

856

857

858

859

860

861

862

863

864

865

866

867

868

869

870

871

872

873

874

875

876

877

878

879

880

881

882

883

884

885

886

887

888

889

890

891

892

893

894

895

896

897

898

899

900

901

902

903

904

905

906

907

908

909

910

911

912

913

914

915

916

917

918

919

920

921

922

923

924

925

926

927

928

929

930

931

932

933

934

935

936

937

938

939

940

941

942

943

944

945

946

947

948

949

950

951

952

953

954

955

956

957

958

959

960

961

962

963

964

965

966

967

968

969

970

971

972

973

974

975

976

977

978

979

980

981

982

983

984

985

986

987

988

989

990

991

992

993

994

995

996

997

998

999

1000

1001

1002

1003

1004

1005

1006

1007

1008

1009

1010

1011

1012

1013

1014

1015

1016

1017

1018

1019

1020

1021

1022

1023

1024

1025

1026

1027

1028

1029

1030

1031

1032

1033

1034

1035

1036

1037

1038

1039

1040

1041

1042

1043

1044

1045

1046

1047

1048

1049

1050

1051

1052

1053

1054

1055

1056

1057

1058

1059

1060

1061

1062

1063

1064

1065

1066

1067

1068

1069

1070

1071

1072

1073

1074

1075

1076

1077

1078

1079

1080

1081

1082

1083

1084

1085

1086

1087

1088

1089

1090

1091

1092

1093

1094

1095

1096

1097

1098

1099

1100

1101

1102

1103

1104

1105

1106

1107

1108

1109

1110

1111

1112

1113

1114

1115

1116

1117

1118

1119

1120

1121

1122

1123

1124

1125

1126

1127

1128

1129

1130

1131

1132

1133

1134

1135

1136

1137

1138

1139

1140

1141

1142

1143

1144

1145

1146

1147

1148

1149

1150

1151

1152

1153

1154

1155

1156

1157

1158

1159

1160

1161

1162

1163

1164

1165

1166

1167

1168

1169

1170

1171

1172

1173

1174

1175

1176

1177

1178

1179

1180

1181

1182

1183

1184

1185

1186

1187

1188

1189

1190

1191

1192

1193

1194

1195

1196

1197

1198

1199

1200

1201

1202

1203

1204

1205

1206

1207

1208

1209

1210

1211

1212

1213

1214

1215

1216

1217

1218

1219

1220

1221

1222

1223

1224

1225

1226

1227

1228

1229

1230

1231

1232

1233

1234

1235

1236

1237

1238

1239

1240

1241

1242

1243

1244

1245

1246

1247

1248

1249

1250

1251

1252

1253

1254

1255

1256

1257

1258

1259

1260

1261

1262

1263

1264

1265

1266

1267

1268

1269

1270

1271

1272

1273

1274

1275

1276

1277

1278

1279

1280

1281

1282

1283

1284

1285

1286

1287

1288

1289

1290

1291

1292

1293

1294

1295

1296

1297

1298

1299

1300

1301

1302

1303

1304

1305

1306

1307

1308

1309

1310

1311

1312

1313

1314

1315

1316

1317

1318

1319

1320

1321

1322

1323

1324

1325

1326

1327

1328

1329

1330

1331

1332

1333

1334

1335

1336

1337

1338

1339

1340

1341

1342

1343

1344

1345

1346

1347

1348

1349

1350

1351

1352

1353

1354

1355

1356

1357

1358

1359

1360

1361

1362

1363

1364

1365

1366

1367

1368

1369

1370

1371

1372

1373

1374

1375

1376

1377

1378

1379

1380

1381

1382

1383

1384

1385

1386

1387

1388

1389

1390

1391

1392

1393

1394

1395

1396

1397

1398

1399

1400

1401

1402

1403

1404

1405

1406

1407

1408

1409

1410

1411

1412

1413

1414

1415

1416

1417

1418

1419

1420

1421

1422

1423

1424

1425

1426

1427

1428

1429

1430

1431

1432

1433

1434

1435

1436

1437

1438

1439

1440

1441

1442

1443

1444

1445

1446

1447

1448

1449

1450

1451

1452

1453

1454

1455

1456

1457

1458

1459

1460

1461

1462

1463

1464

1465

1466

1467

1468

1469

1470

1471

1472

1473

1474

1475

1476

1477

1478

1479

1480

1481

1482

1483

1484

1485

1486

1487

1488

1489

1490

1491

1492

1493

1494

1495

1496

1497

1



### READY FOR TAKE-OFF.

Comfort, convenience and safety are the trademarks of our cockpit. Our cockpit hosts an enormous windshield, full auto leveling jacks, remote generator start switch and large rear vision monitor (optional) making the Georgetown model a pure joy to drive.

### UNDER SINK STORAGE.

We supply the space you need to take all of your favorite goodies with you. All Georgetown models have slide-out pantries next to the refrigerator for more convenient storage.



### TRASH IS BETTER LEFT UNSEEN.

Trash is a common reality each motorhome user lives with but few design kitchens with trash receptacles in mind. Georgetown not only dedicated space for the trash but designed a secure compartment so it does not topple while traveling.



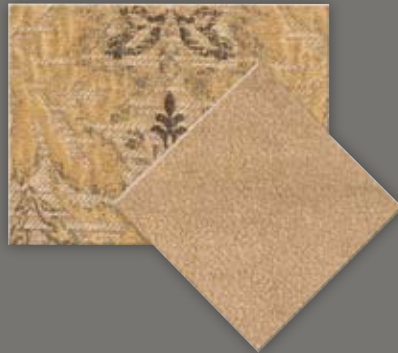
MODEL 349 ONLY

# INTERIOR DECOR OPTIONS

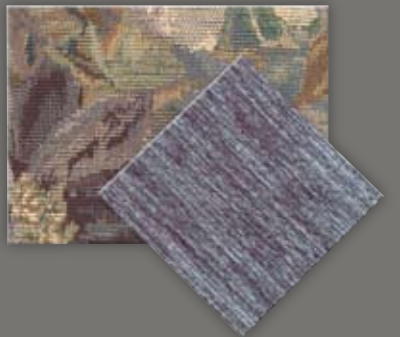
HAZELNUT



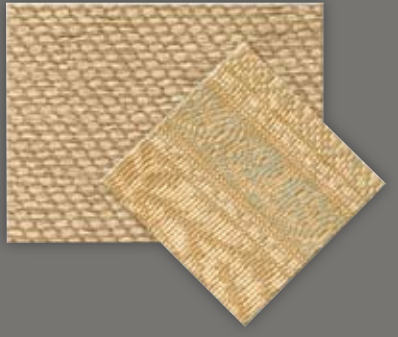
BIRCH



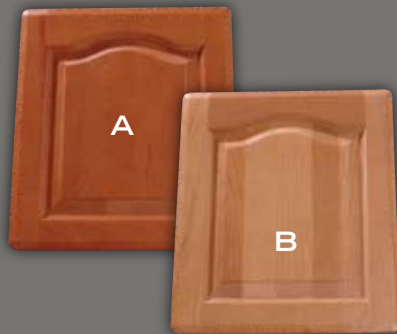
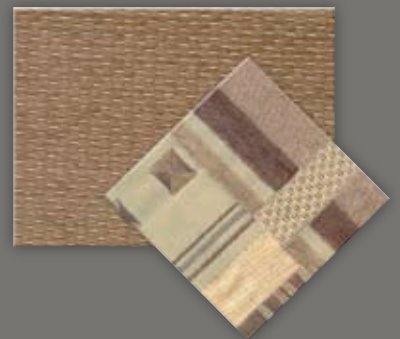
BLUE



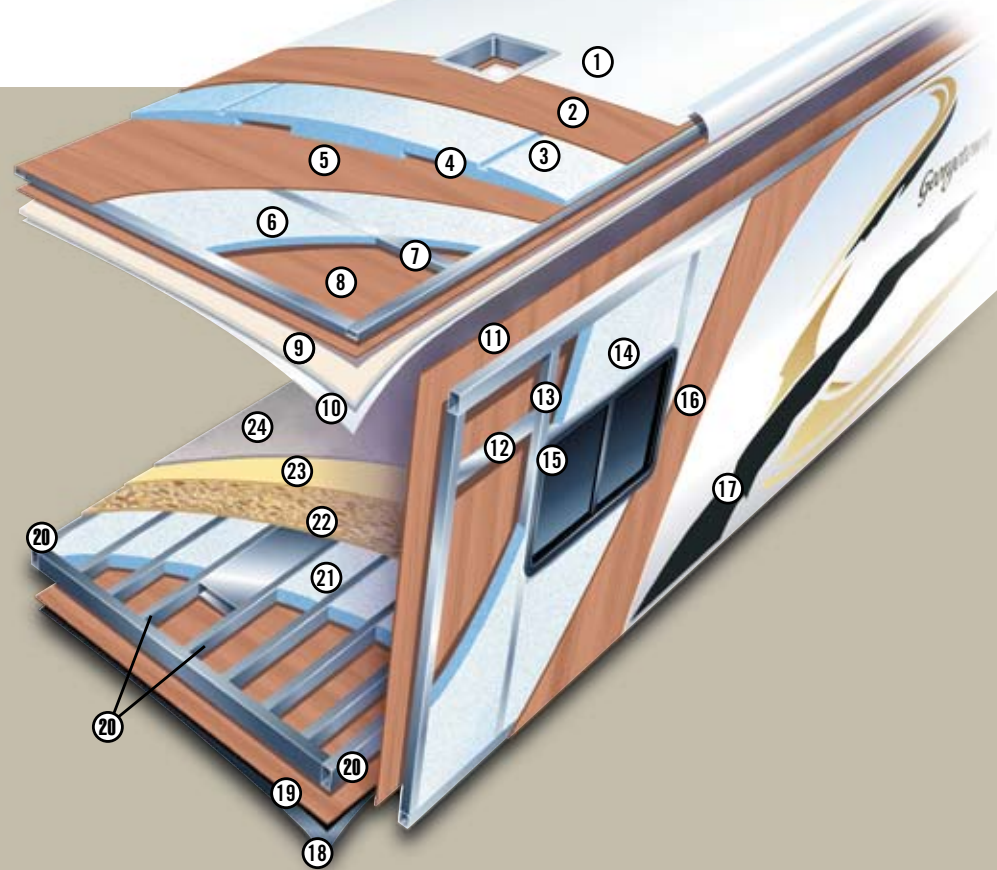
BARLEY



CASHMERE



A. CHERRY B. ASH



## MULTI-LAYERED LAMINATED ROOF SYSTEM

(Total roof thickness 5")

1. Seamless fiberglass roof
2. Luan Decking
3. 3.5" Block foam insulation
4. Dual A/C Ducts
5. Vapor Barrier
6. 1" Block foam insulation
7. Tubular aluminum framing
8. Luan
9. Foam padding
10. Vinyl interior headliner

## VACUUM-BOND LAMINATED SIDEWALLS

11. Decorative interior wall board
12. Electro-galvanized sheet metal backers
13. Tubular aluminum framing
14. Block foam insulation
15. All sidewall openings framed in aluminum
16. Luan
17. Smooth fiberglass exterior

## VACUUM-BOND LAMINATED FLOOR SYSTEM

18. Fiberglass reinforced vinyl vapor barrier
19. Luan
20. 2.5" Tubular steel floor framing
21. 2.5" Block foam insulation
22. Virtually seamless floor decking
23. Thick padding
24. Durable carpet



A



B



C



D



E



F



G



H

## SPECIAL FEATURES

A. REAR TRUNK. All standard Georgetown models have an opening rear trunk for all of your miscellaneous travel items and storage for your spare tire. 22.5" spares are optional.

B. WATER FILTRATION SYSTEM purifies your water for the whole coach. This system is found standard on every Georgetown model.

C. SPRING-BACKED DINETTE CUSHIONS are supremely comfortable. Seats lift up to provide extra storage below.

D. CO-PILOT WORK STATION provides a convenient area for your laptop or road map. Now the co-pilot has a place to spread out.

E. PASS-THROUGH STORAGE compartments are lighted creating expansive storage to take it all with you.

F. CONVENIENCE COMMAND CENTER keeps all the controls managed in one place.

G. UNDER BED STORAGE provides that additional storage space where the competition comes up short.

H. FULLY AUTOMATIC LEVELING JACKS are standard on all Georgetown models.



XL PAINT PACKAGE IN CHAMPAGNE.

# GEORGETOWN STANDARDS & OPTIONS

## EXTERIOR

- One-piece fiberglass roof
- Formed one-piece cargo doors
- Rotocast baggage compartments
- Foam seal undercoating
- Cable T.V. phone jacks (opt.)
- Coach battery – single
- Coach battery – 1 additional (opt.)
- Driver's door (opt.)
- Dual full-sized mirrors
- Entrance door with screen and deadbolt
- Entrance step – electric (exterior package opt.)
- Entry assist handle
- Exterior Filon® fiberglass skin (Gelcoat with XL Package)
- Hitch 5000 lb. (opt. exterior package)
- Automatic hydraulic leveling jacks - std.
- Ladder with rack - exterior package (opt.)
- Lockable, lighted basement storage with single action slam latches
- Mud flaps (4)
- Outside shower (opt.)
- Painted baggage doors (opt.)
- Pantographic intermittent windshield wiper system
- Patio awning
- Patio awning with remote and wind sensor (opt.)
- Patio light
- Remote heated mirrors (opt.)
- Slide-out room awnings – all
- Slider windows with screens (except bedroom)
- Spare tire (opt.)
- TV antenna with booster
- 22.5" tires with Alcoa aluminum rims

## STRUCTURAL

- Aluminum framed all openings
- Laminated, steel framed floor
- 3" floor with ducted heating
- Insulated, formed one-piece baggage doors
- Laminated alum. framed sidewalls, roof (including all openings)
- Under floor steel truss system
- Rear trunk for spare or storage

## DRIVER / PASSENGER AREA

- Automotive heater/air conditioner with deluxe controls
- Auxiliary start switch
- Defroster fans (2) (opt.)
- Driver/passenger map lights
- Driver/passenger reclining swivel bucket seats
- Optional driver's door w/ electric window
- Optional driver side 6-way power seat
- Front wrap-around privacy curtain with easy slide track and rod
- I.C.C. flash
- Map pocket passenger side - accessory package (opt.)
- Fiberglass Molded engine cover
- Radio – single CD AM/FM (Optional 6 CD changer)
- Radio power selector switch
- Rear vision camera with monitor (opt.)

## LIGHTING / DINING / GALLEY

- 3-burner range with 22" oven
- Barrel chair
- Countertop extension
- High rise deluxe faucet
- Dinette – booth with storage underneath
- Double door – 8 cu. ft. refrigerator/freezer 2-way
- Double door – 8 cu. ft. refrigerator/freezer 2-way with ice maker (opt.)
- Side by side refrigerator with ice maker (opt. some models)
- Flip sofa with arm rests
- Front color 27" flatscreen T.V.
- Laminate kitchen counter with double bowl sink
- Linoleum in kitchen area to entry door
- Microwave – 30" over the range
- Wood raised panel refrigerator insert (opt.)
- Overhead cabinets in slide-outs
- Range cover - accessory package (opt.)
- Rubber step tread
- Satellite prep
- Slide-out pantry
- Stainguard carpet with pad
- Sink cover with cutting board (1)

- Solid Ash or Cherry framed raised panel cabinet doors
- Spice rack - accessory package (opt.)
- Home theatre system (opt.)
- Video switch box (opt.)
- Vinyl padded soft touch ceiling
- Window – day/night shades (opt.)
- Window – opaque night shades

## BATH

- 10 gallon gas/electric water heater with DSI
- ABS shower with surround (1 piece FBGL model 342 with tub)
- Black water tank flush system (opt.)
- Dual control shower faucet with flex head
- Linoleum in bathroom area
- Medicine cabinet
- Porcelain toilet with foot flush
- Shower skylight
- Toothbrush holder
- Towel bar
- Washer/dryer (optional models 370, 375, 378)
- Washer dryer prep (optional models 370, 375, 378)

## BEDROOM

- 60" x 75" island queen bed with bedspread, headboard pillow shams and storage below
- 20" flat screen T.V. (std. on all DS models)
- Bedskirts
- Nightstand
- Shirt closet
- Windows – 4 tier jalousie window
- Window – day/night shades (opt.)
- Window – opaque night shades

## SAFETY

- 110v GFI protected circuit (kitchen, bath, exterior)
- Carbon monoxide detector\*
- Exit window
- LPG detector
- Smoke alarm
- Recess mounted fire extinguisher (inside entry door)

## WATER / HEATING / VENTILATION / POWER

- 30 amp 120v distribution panel and cord
- 50 amp 120v distribution panel and cord - forced with washer dryer (opt.)
- 55 amp 12v power converter
- Artic package\*
- Water filter system (1 micron)\*
- Ducted in-floor heat 35,000 BTU furnace
- Electric battery disconnect
- Fantastic roof vent – (opt. kitchen, bath, bedroom)
- Generator – Onan 4.0 Microlite (opt.)
- Generator – Onan 5.5 Marquis (opt.)
- Power ceiling fan in bath
- Roof A/C – 13.5 BTU ducted – front (std.)
- Optional bedroom A/C (11.0 or 13.5 BTU)
- Optional low profile A/C
- Roof A/C – 15.0 BTU ducted – IPO standard 13.5 front (opt.)
- Roof A/C – heat strip (opt.)

## OPTIONAL XL PACKAGE

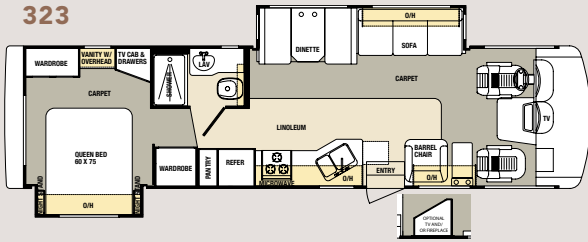
- High-gloss gelcoat fiberglass sidewalls
- Thermopane windows
- Solid surface countertops (kitchen)
- Undermount sink with flush solid surface covers
- Deluxe grab handle at entrance door
- Day/night shades
- UltraLeather driver/passenger seats
- Exterior paint\* - upgrade
- Sculpted carpet
- Fluorescent ceiling lights - living room
- Upgrade bath lighting
- Faux marble shower
- Faux marble bath sinks
- Solid surface countertop edging

\* Forced option

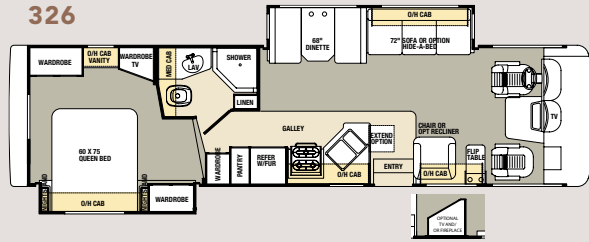


# FLOORPLANS & SPECIFICATIONS

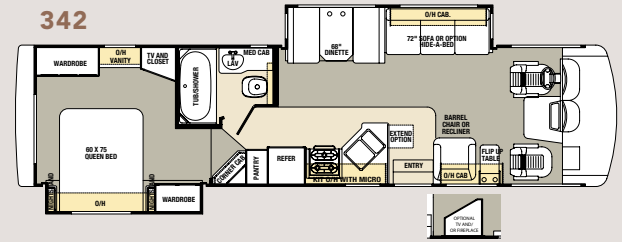
323



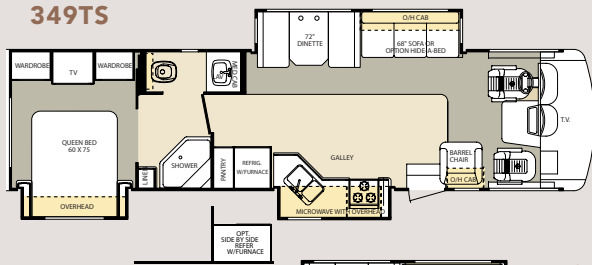
326



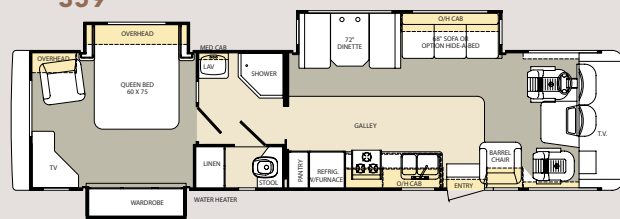
342



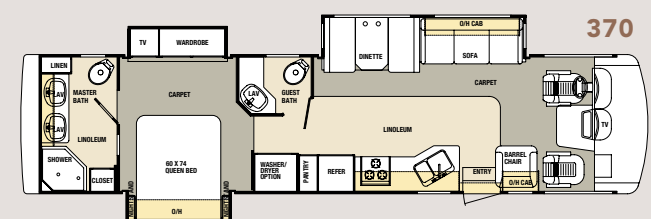
349TS



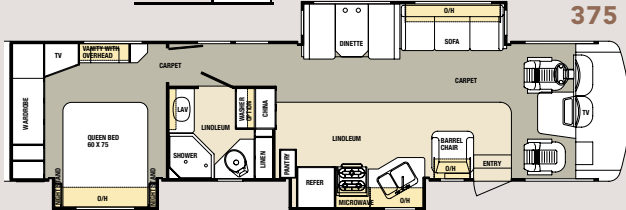
359



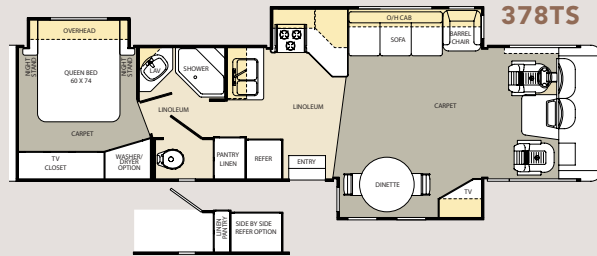
370



375



378TS

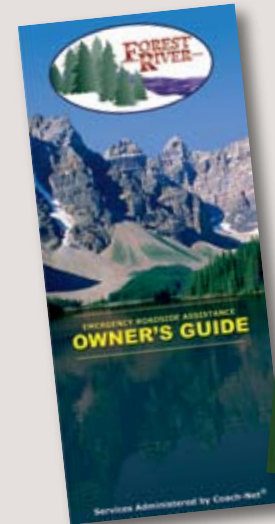


## DIMENSIONS & CAPACITIES

	323DS	326DS	342DS	349TS	359TS	370TS	375TS	378TS
GCWR	26,000	26,000	26,000	26,000	26,000	26,000	26,000	26,000
GVWR	22,000	22,000	22,000	22,000	22,000	22,000	22,000	22,000
UVW	17,530	17,700	17,900	19,100	18,960	19,040	19,700	19,360
CCC	3,285	3,115	2,915	1,798	1,863	1,445	1,114	1,537
Wheel Base	228"	218"	228"	228"	228"	242"	242"	242"
Fuel Capacity	75	75	75	75	75	75	75	75
Tire Size	22.5	22.5	22.5	22.5	22.5	22.5	22.5	22.5
Interior Height	80"	80"	80"	80"	80"	80"	80"	80"
Interior Width	96"	96"	96"	96"	96"	96"	96"	96"
Overall Height w/ AC	12'5"	12'5"	12'5"	12'5"	12'5"	12'5"	12'5"	12'5"
Overall Length	33'11"	34'6"	35'2"	35'3"	36'8"	37'3"	37'8"	37'2"
Overall Width	100"	100"	100"	100"	100"	100"	100"	100"
Fresh Water (gal)	80	80	80	80	80	80	80	80
Black Water (gal)	41	41	41	41	41	82	41	41
Grey Water (gal)	41	41	41	41	41	82	41	41
LP Tank (lb.)	105	105	105	105	105	105	105	105

## PEACE OF MIND.

Forest River has yet another exclusive feature to offer: One year of free roadside assistance will be given to every Georgetown customer. This is just one more way to say "Thank you" and to ensure an enjoyable traveling experience.



# GEORGETOWN SPECIAL EDITION THE AFFORDABLE ALTERNATIVE.



MODEL 340TS SE: BIRCH.

Georgetown construction features abound throughout the SE, making it a robust and lasting value. Even if the SE is your first motorhome, it is built to be a faithful companion for years to come. Unique features usually only found in more expensive coaches, like full-unit water filtration, basement storage, and a designer lighting package speak of our ongoing commitment to our customers. Don't make sacrifices to get on the road... start with the best! The Special Edition Georgetown by Forest River!



SE SHOWN WITH OPTIONAL BOTTOM PAINT.

## DIMENSIONS & CAPACITIES

	303 SE	319TS SE	338S SE	340TS SE	350DS SE
GCWR	26,000	26,000	26,000	26,000	26,000
GVWR	18,000	20,500	20,500	22,000	22,000
UVW	14,020	16,860	15,960	17,500	17,500
CCC	2,878	2,538	3,436	3,398	3,348
Wheel Base	208"	190"	228"	228"	228"
Fuel Capacity	75	75	75	75	75
Tire Size	19.5	19.5	19.5	22.5	22.5
Interior Height	80"	80"	80"	80"	80"
Interior Width	96"	96"	96"	96"	96"
Overall Height w/ AC	12'3"	12'3"	12'3"	12'5"	12'5"
Overall Length	30'10"	31'11"	33'	34'5"	35'6"
Overall Width	100"	100"	100"	100"	100"
Fresh Water (gal)	80	80	80	80	80
Black Water (gal)	41	41	41	41	41
Grey Water (gal)	41	41	41	41	41
LP Tank (lb.)	105	105	105	105	105

## SPECIFICATIONS

### EXTERIOR

- Foam seal undercoating
- Cable TV/phone jacks
- Dual Exterior Mirrors
- Day- Night Shades (opt)
- Entrance step- Electric
- Hitch 5000 lb
- Patio light
- Ladder (opt)
- Exterior Paint Package (opt)
- Hydraulic auto leveling jacks (n/a-303)
- Pleated Night Shades Throughout (std.)
- Stainless steel wheel liners (mandatory opt. models 303, 338, 319)
- 22-1/2" Alcoa wheels (models 340, 350)
- Patio awning
- Picnic Table (338S, 303)
- Rear bedroom window (opt)
- Slide-out room awning (s)
- Spare tire (opt. 338, 303)
- Thermo Pane Windows (opt)
- TV antenna w/booster
- Mud flaps (2)

### STRUCTURAL

- 3" Laminated steel framed floor
- Laminated alum. framed sidewalls, roof (includes all openings)
- Under floor steel truss system

### BEDROOM

- 60"x 75" island queen bed
- Nightstands
- Flat screen- 20" color TV (opt)
- Bedspreads, pillow shams (opt)

### BATH

- 6 gallon gas water heater w/DSI
- ABS shower w/surround
- Shower skylight

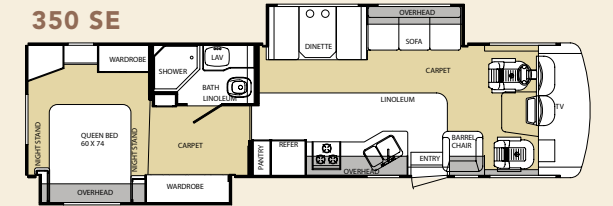
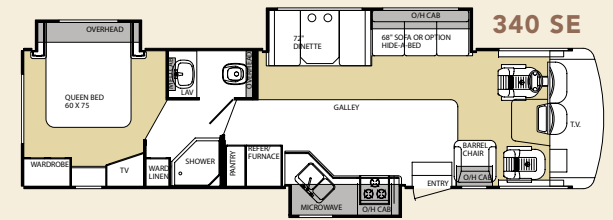
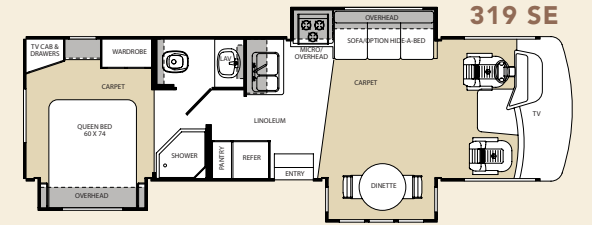
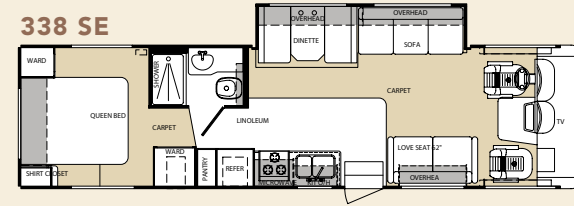
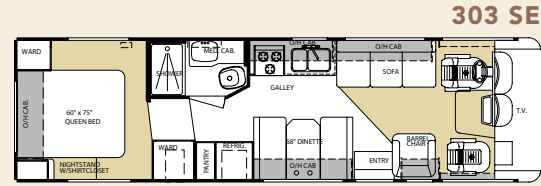
### SAFETY

- 110v GFI protected circuit (kitchen, bath, exterior)
- Carbon monoxide detector (mandatory/opt)
- Exit window
- LPG detector
- Smoke alarm

### DRIVER/PASSENGER AREA

- Automotive heater/air conditioner w/ deluxe controls
- Auxiliary start switch
- Driver/passenger map lights
- Driver/passenger reclining, swivel fabric bucket seats
- Front wraparound privacy curtain w/easy slide track and rod
- I.C.C. flash
- Radio- AM/FM CD (std.)
- Radio power selector switch
- Rear vision camera w/monitor (opt.)

## FLOORPLANS



### LIVING/DINING/GALLERY

- 3-burner range w/oven
- Double door refrigerator
- Flat screen- front color 20" TV
- Hide a Bed Sofa (NA 303)
- Laminate kitchen counter top
- Linoleum in kitchen area to entry door
- Linoleum in place of carpet (opt)
- Microwave
- Overhead cabinets in slide outs
- Solid wood raised panel cabinet doors
- Video Switch Box (opt)

### WATER/HEATING/ VENTILATION/POWER

- 30 amp 120v distribution panel and cord
- 50 amp 120v distribution panel and cord (opt)
- 55 amp 12v power converter
- Full Coach Water Filtration System (1 Micron)
- Ducted in-floor heat 35000 btu furnace
- Electronic battery disconnect
- Generator- Onan 4.0 Microlite (std)
- Generator- Onan 5.5 Marquis & 50 amp (opt.)
- Power ceiling vent in bath
- Roof A/C- 13.5 Brisk Air ducted- Front (std.)
- Optional Rear A/C (11.0)



SAY GOOD-BYE TO YOUR PAST AND HELLO TO YOUR FUTURE.



Forest River, Inc. 58277 S.R. 19 South Elkhart IN, 46517 Phone: 574.296.7700

Fax: 574.295.8749 [www.forestriverinc.com](http://www.forestriverinc.com) [www.forestriveraccessories.com](http://www.forestriveraccessories.com)

All illustrations and specifications contained in this literature are based on the latest product information at time of publication. Forest River reserves the right to make changes in prices, colors, materials, equipment and specifications at anytime without notice and assumes no responsibility for any error in this literature. All units are shipped F.O.B. Goshen, Indiana. Litho U.S.A. Rev 11/05

CONSULT YOUR LOCAL DEALER FOR WARRANTY INFORMATION. PHOTOS MAY DEPICT OPTIONAL FEATURES.

COMPLIMENTS OF