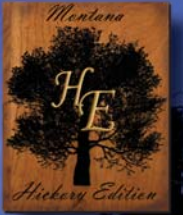


Montana
Hickory Edition

Montana

Montana



Unparalleled Comfort and Luxury



Montana Living Area Hickory Edition

Montana's luxurious new decors and easy living features provide the comfort and luxury consistent with Montana's reputation being the #1 selling fifth wheel in North America. None of the details have been overlooked or forgotten. Plush residential furniture, state of the art remotely controlled electronics, and solid hickory cabinetry only highlight the all new 2010 Montana.

Montana's luxurious living area has a 72" residential sofa which is upholstered in beautiful heavy grade fabric. The sofa also converts to a true 60" x 80" queen size air bed with the touch of a switch. There is 5 cubic feet of storage space in the base of the sofa. Perfect to store sheets and blankets.

Standard on every Montana are two 32" wide, high back glider recliners complete with lumbar cushions. An optional 5100 BTU electric fireplace is available on most models. Imagine relaxing in your favorite chair at the end of the day enjoying the warmth of a fire!

Most Montana models give you the option of having a computer workstation for surfing the web or catching up on your e-mail. Extra deep drawers are available to hang and protect your important file folders. The cabinets above the workstation add even more storage space.

The spaciousness of the Montana is unparalleled. The slide room ceiling height is 6' - 6"... An industry first. Until you have experienced the sheer openness of the Montana, you have no idea what your missing!



Model 3455RL is shown above in "Emerald Aisle" decor. The 40" HD LCD television remotely lifts up for viewing and can be lowered down into the cabinet when not in use, offering an expansive view through the window.



Model 3400RL shown above in "Mocha", exemplifies the beauty of the solid wood cabinetry and fascia in the 2010 Montana Hickory Edition series.



Model 3400RL in "Mocha" decor, is a spacious floor plan with an enormous rear bay window. Luxurious Hickory overhead cabinets provide lots of storage.

Models 3400, 3605, and 3465 feature the entertainment center and desk in a slide room. The 32" HD LCD television slides forward and swivels. These models are RG-6 satellite ready and equipped with a digital TV antenna and signal booster. A hidden slide out CD/DVD rack is located behind the television. The entertainment center is complemented by a FM/CD/DVD player with 5.1 surround sound.

Montana Kitchen

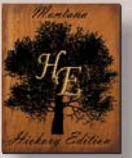
Cuisine is king in the Montana... and you will have no problem preparing any meal. Dual ovens are standard in the Montana. The full sized 30" OTR over the range microwave is positioned at the ideal height for your safety. The microwave is vented outside discharging fumes and condensation. Your Montana also has a 22 inch conventional oven. In addition, there is a flush mounted, automatic ignition, 3 burner cook top with a cover for more counter space. Also, the kitchen has a large 8 cubic foot refrigerator with an adjustable thermostat which is standard, while many models offer an optional 4 door 12 cubic foot refrigerator.

The drawers in the Montana have full extension steel roller bearing drawer guides. This allows the rear of the drawer to extend beyond the counter top for easy accessibility. The cabinet door hardware is 5" designer pulls...just like in your home, large enough to fit your whole hand in. We've even added toe kicks at the bottom of most Montana cabinets, allowing you closer access to your work space.

Montana model 3400RL with the optional 12 cu. ft. refrigerator. Note the Corian counter top and cabinet space.

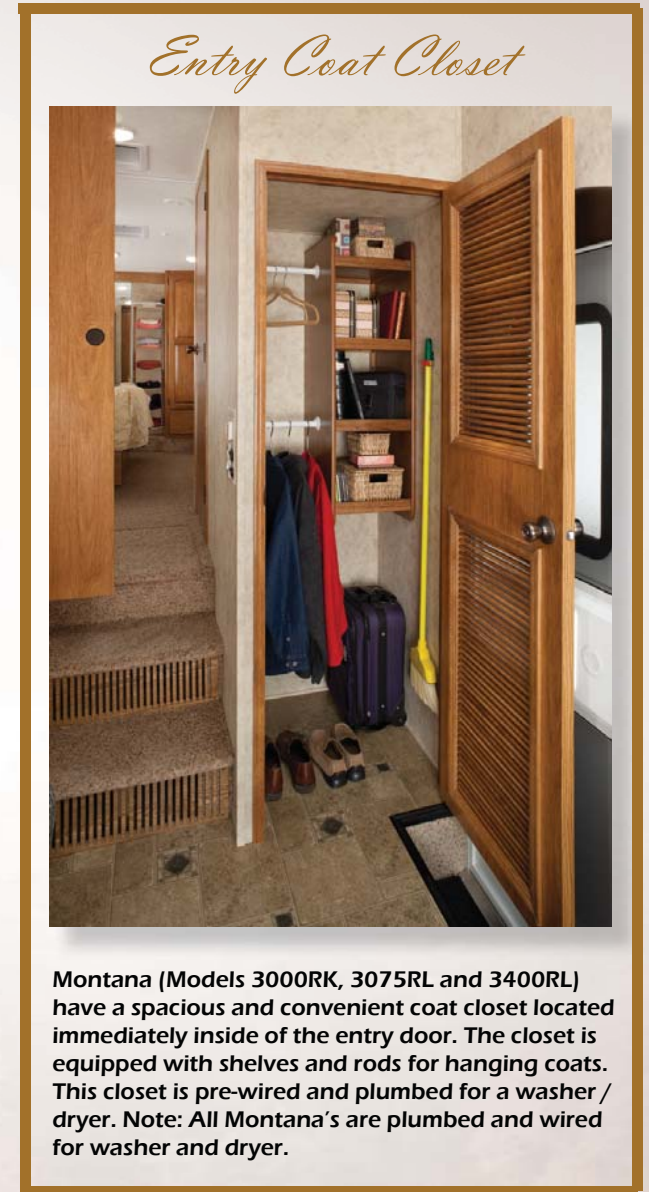


Cuisine is King in the Montana



Montana model 3455RL featured in "Emerald Isle" decor. Note the desk at the Kitchen Entry.

Every Montana comes with beautiful Corian™ brand counter tops and deep full sized sinks. The stylish, single lever faucet pulls out to become a sprayer. The key to a great kitchen is organization, and that's exactly what the Montana delivers. Depending on the floor plan, you can have up to 25 drawers and cabinets...that's more space than any other coach in the industry. The overhead cabinets are 32" - 36" tall and at least 13" deep allowing for storage of all of your full sized plates and serving dishes. We've even added a raised edge on the front of all our cabinets to prevent content from sliding forward and falling out while traveling. Our exclusive, free-standing dining Table is extremely versatile, it both slides and swivels, allowing you to arrange the table just about any way you like. The dining table even has a leaf extension and pull out drawer. Just another example how Montana merges practicality with elegance.



Entry Coat Closet

Montana (Models 3000RK, 3075RL and 3400RL) have a spacious and convenient coat closet located immediately inside of the entry door. The closet is equipped with shelves and rods for hanging coats. This closet is pre-wired and plumbed for a washer/dryer. Note: All Montana's are plumbed and wired for washer and dryer.

Montana Bed Room

Montana's wide body bedroom suites are nothing short of extraordinary. When you enter the room, you will instantly recognize the spaciousness accomplished by our deeper slide.

Despite the floor plan you may be viewing, the 6' 5" tall ceiling height will give you a feeling of spaciousness. These higher ceilings allow for larger cabinets, wardrobes and windows.

Montana's bedrooms have large 30" deep cedar lined closets. Your clothes will stay fresh even on the longest of trips.

The armoire is extremely versatile. It has removable shelves or can be converted for a washer / Dryer. The washer /Dryer prep is already in place. There is even a hidden storage area for your valuables to securely store in.



Montana's 12 volt, 19" LCD bedroom TV is easily removable and can be installed in seconds on a pre-mounted bracket in the large basement pass through compartment.



Our goal at Montana is to design each unit to be a luxurious home. We installed a beautiful hickory 6 drawer chest at the foot of the bed. The result is a spacious open feeling while providing more than ample storage. An additional window was added to the bedroom for beauty and mountain fresh air. All Montana bedrooms are complimented with a 12 volt, 19" LCD digital Television conveniently mounted on the wall.



Montana Bath



All of our bathrooms have residential style solid surface vanity tops with oversized molded sinks with a back splash. The sink has an attractive single lever faucet that coordinates with the rest of the other fixtures. Unlike most other brands, the Montana vanity is a full 35 inches tall which is consistent with residential vanities. There is a large medicine cabinet over the vanity which has a custom 3 bulb decorative light. Each unit comes with a standard 36" wide garden tub or optional 36" shower with an adjustable height hand held shower head. Both models have a seat, three shelves and an integrated wash cloth holder. The glass shower surround has an attached towel rack on the door. The skylight is standard on all Montana's, allows natural light into the bathroom. Montana features a residential style porcelain toilet with a foot flush.



Montana uses a residential 60" x 80" pillow top queen size bed in all models. We also offer an optional king size bed with spacious 12" radius corners. Every bed has loads of space beneath the bed deck. Access is simplified by hydraulic struts which assists in lifting the bed and holding it up while being accessed. A fire proof security safe has been added under the bed deck for additional valuable storage.

The Montana bedroom is outfitted with decorative reading lights and night stands on both sides of the bed. A 110 volt outlet is conveniently located close to the bed for your night stand alarm clock or other items you may need to use.

ROOF R-38

1. Rear Ladder
2. Vented Attic
3. 15,000 BTU A/C
4. One-Piece EPDM Rubber Roof with 12 Year Warranty
5. Aluminum Radius Roof Transition Molding
6. 3/8" Roof Decking
7. Radiant R-38 Insulation (97% Heat Reflection)
8. Fiberglass Insulation
9. Aluminum Wrapped AC Duct
10. Ceiling Decking with Vinyl
11. 5" Fabricated Galvanized Steel Truss Rafters on 16" Centers

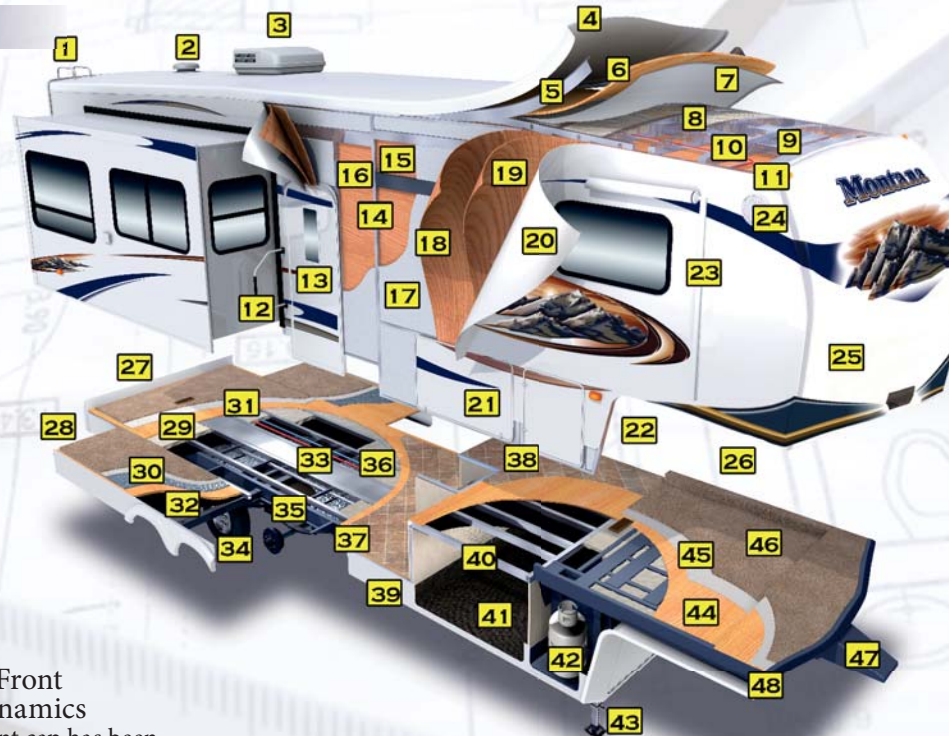
FLOOR R-21

27. Rear Accessory Hitch
28. Electric Rear Jacks
29. DARCO Wrapped Main Floor Moisture Barrier
30. Astro-Foil Insulation
31. Fiberglass Insulation
32. One-Piece Fluted Polypropylene Fully Enclosed Sub-Floor
33. 3" Large-Capacity Heat Duct
34. Heavy Duty 8-Lug Wheels with Easy Lube Axles
35. MOR/ryde® Suspension
36. Enclosed and Insulated Water Lines

37. Powder-Coated 10" Steel "Rolled" I-Beam
38. Residential Linoleum
39. Full Radius-Wrap Aluminum Enclosure
40. 3" Welded Aluminum Floor
41. Drop-Frame Chassis Design with Flat-Floor Storage
42. Dual 30 Lbs. L.P. Bottles on Each Side
43. Easy Access Adjustable Snap Jack Pins
44. 5/8" Seamless Floor Decking
45. Residential Carpet Pad
46. Residential-Grade Carpeting with Stain Protection
47. Extended Hitch Pin

SIDEWALLS R-9*

12. Fold-Away Grab Handle
13. 30" x 74" Entry Door with Window
14. 2" Welded Aluminum Wall Studs
15. Interior Decorator Board
16. Electro-Galvanized Sheet (EGS) Metal Backing Strips
17. High Density Solid Block Insulating Foam
18. 1/8" Luan Board
19. 2nd Layer of Luan with Staggered Seams
20. Gel-Coated Fiberglass (Hi-Gloss is Optional)
21. Heavy Duty Insulated Baggage Doors
22. Exterior Convenience Center
23. Electric Patio Awning
24. Security Light
25. Fiberglass Front Cap with Improved Turning Radius and Hitch Vision
26. Side-Mounted Hydraulic Selector Valves



Montana is zero degree tested and approved for four season living so you can enjoy your fifth wheel year round. Heres why:

- Montana's arctic insulation package includes Radiant Technology insulation and a layer of R-14 fiberglass insulation in the roof. That's equivalent to R-38!
- The sidewalls are constructed of solid block foam which is laminated by three layers of luan and an exterior of gel-coated fiberglass.
- The floor is insulated with a layer of 97% Heat Reflective Astro-Foil and a layer of R-21 fiberglass insulation.
- Water lines are enclosed, insulated and heated.

Max Turn Front Cap Aerodynamics
Montana's front cap has been completely re-engineered utilizing an aviation style shape dramatically reducing the drag coefficient for maximum fuel economy.



(Hitch is Optional)

MOR/ryde® Suspension System
State of the art suspension system which creates the smoothest ride on the road. This unique system reduces road shock by 30%



Easy Set Remote Control System
Montana's "Easy Set Remote Control System" simplifies setup and operation. The front and rear jacks, electric awning, hydraulic slide outs and patio security lights are all controlled from your key chain! All of these functions are also available using Manual switches inside or outside of the unit.



EXTERIOR	
Aerodynamic front cap with Hitch Vision™	HE
Welded, totally aluminum-framed walls, floors and slide-outs	M
5" galvanized stamped steel roof rafters	M
2" laminated, gel-coated FILON™ sidewalls with dual layered luan (R-9)	S
Arctic Insulation Package: R-14, R38 roof and R-21 floor	M
Vented attic	M
Insulated radius baggage doors with inside fasteners	S
Radius wrap lower walls	S
Seamless, one-piece underbelly enclosure	HE
Heated, enclosed and insulated water lines, dump valves and holding tanks tested for 0° usage	M
Seamless, one-piece 5/8" Dynaspan™ floor decking	S
"Wide Stance" front jack legs with adjustable snap jack pins	S
Rear accessory hitch	M
Rear roof ladder	S
Rear back-up lights	S
(2) patio scare lights on separate switches	M
MOR/ryde® rubber suspension system	M
Dexter E-Z Lube® axles	M
Heavy duty 8-lug wheels	S
Brand name 16" steel belted radial tires	S
Under mount spare tire and carrier	S
Deep tint safety glass windows	M
30" wide entry door	S
Fold away entry handle	M
Enormous drop frame pass through storage compartment with flush floor and no stain Congoleum®	HE
Enormous front storage compartment with double doors and hooks for power cord and water hose (over 142 cubic feet of total exterior storage)	S
110v and 12v outlets with cable/satellite hook-up in pass through storage compartment	S
Slide topper awning package (double slides)	O
Slide topper awning package (triple slides)	O
Slide topper awning package (quad slides)	O
High gloss gel coated fiberglass exterior	O
Dual pane safety glass windows	O
MOR/ryde® hitch pin	O
Aluminum wheels	M

INTERIOR	
32" HD LCD TV with pull-out swivel tray (40" HD LCD TV with electric lift on 3455SA and 3665RE)	HE
FM/CD/DVD player with 5.1 surround sound	M
Digital TV antenna with booster	M
Air mattress hide-a-bed sofa	M
(2) high-back recliners with footrest	M
Solid hardwood cabinet stiles, cabinet doors with raised panels and radius corners, end panels, crown molding and desk tops	HE
Residential full extension steel drawer guides	S
High density residential carpeting	S

7 lb... carpet padding	S
Designer linoleum kitchen floor and entryway	S
True flush floor main slide rooms in living area with R-14 floor insulation	S
6' 6" extra tall main slide rooms with 15" tall, 17" deep overhead cabinets in living area	S
Day/night shades	S
Oil rubbed bronze hardware and lighting package	S
Ceiling fan with light kit	M
Computer work station with an electrical outlet (most models)	S
High-back desk chair (3400RL, 3465SA, 3455RL, 3585SA, 3605RL, 3665RE only) 3/50	O
Sofa table	O
Electric fireplace (NA 2955RL and 3075RL)	O
End table and lamp	O

KITCHEN	
Dupont™ Corian® counter top and sink with oversized bowls and pull-out faucet with sprayer	HE
(2) Flush mount Dupont™ Corian® sink covers	HE
Free standing dinette with swiveling and sliding table top plus leaf extension	HE
Free standing dinette chairs with plush upholstery and storage in the seats	S
Full extension, wide deep drawers	S
Residential-size overhead cabinets	S
30" OTR Microwave with built in range hood	HE
30" OTR convection microwave oven	O
Large 8 cubic foot double door refrigerator	M
Raised hardwood front refrigerator panels	M
High output range with automatic ignitor	S
Range cover	M
12' Four Door Refrigerator	O
22" oven with broiler	S
Booth dinette IPO free standing dinette	O

BATHROOM	
36" garden tub with glass enclosure, (3) shelves and washcloth holder	S
Deluxe, oil rubbed bronze adjustable height shower head	S
Sky dome over shower	M
Solid surface bathroom lavatory top, oversized one-piece molded sink and back splash	HE
Single lever faucet	S
Adult height vanity with large base cabinet	S
Bright decorative vanity light	S
Residential-style medicine cabinet	S
Porcelain toilet with foot pedal flush	M
Heated commode room with 12v exhaust fan	S
Neo-angle shower IPO garden tub	O

BEDROOM	
Single level bedroom/bathroom suite	S
Quilted bedspread and (2) pillow shams	S
Residential-sized chest of drawers with hidden storage compartment	S
12 volt 19" LCD bedroom TV	S
Deluxe queen (60" x 80") innerspring mattress	M

Bedside night stand shelves	S
Dual reading lights over bed	M
Spacious cedar lined front wardrobe with 12v light and 110v outlet near the head of the bed	M
"Shoe Closet" storage area in front wardrobe	S
Hidden safe under bed	M

UTILITIES	
Easy Set Remote Control System: remote control electric rear stabilizer jacks, remote control electric front jacks, remote control A&E™ 12v power awning, remote control hydraulic slide-outs, remote control patio scare light.	HE
Hydraulic selector valves	M
Central Exterior Convenience Center: 12v light, outside shower, No-fuss Freeze guard™ winterizing kit, black tank flush, enclosed low point drains, city water connection, power tank fill, RG-6 cable/satellite hook-up	M
35,000 BTU furnace with automatic ignition and high capacity in-floor ducting	S
15,000 BTU air conditioner with Quick Cool	M
Wire and frame for 2 nd air conditioner with remote sensor in bedroom and digital dual zone thermostat	M
Washer/dryer prep	M
12 gal. DSI gas/electric water heater	HE
80 amp Xantrex™ XADC converter	HE
50 amp service	S
50 amp detachable marine power cord	S
Systems monitor panel	S
RG-6 Satellite Prep	M
Satellite/cable hook-up	S
Carbon monoxide detector	S
Fresh water capacity = 66 gal.	S
Grey water capacity = 93 gal.	HE
Black water capacity = 50 gal.	HE
Ducted 2 nd 13,500 BTU A/C	O
Wireless rear/back-up camera	O
Fantastic fan vent (locations vary)	O
Generator ready (Onan 5.5 kw specs.)	O
Onan Marquis Gold 5.5 kw L.P. generator	O
Central vacuum	O
Black Tank Flush	M
Easy store sewer boom	HE

Interior Decors

Desert Sunset - Sapphire _ Emerald Isle

M = Moving to Montana Package
 S = Standard O = Option HE = Hickory Edition
 Standards and Options are subject to change without notice.

HICKORY EDITION PACKAGE

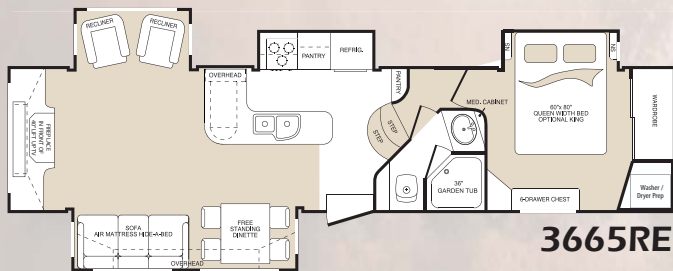
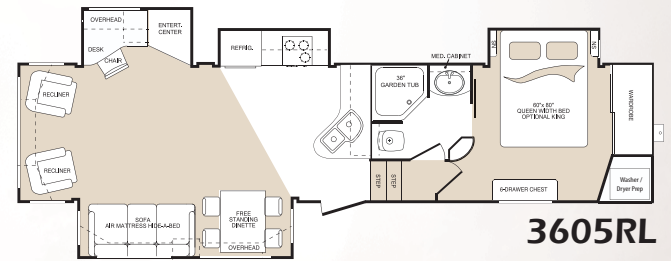
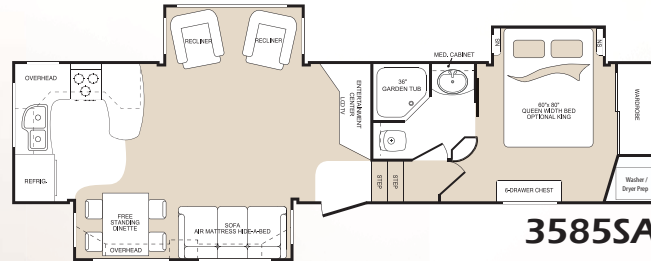
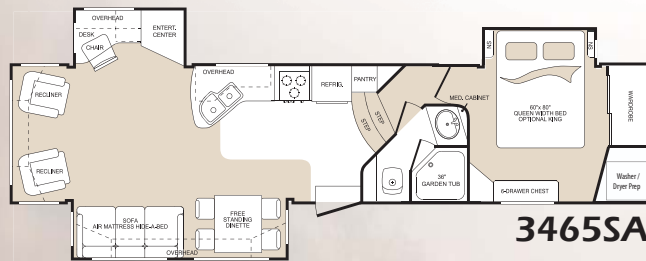
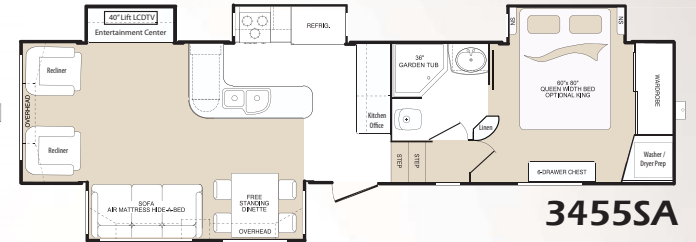
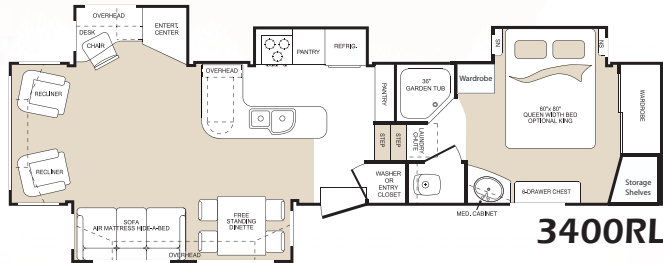
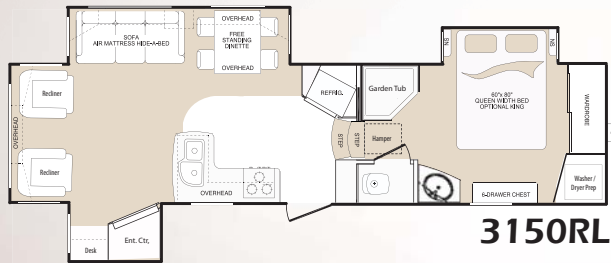
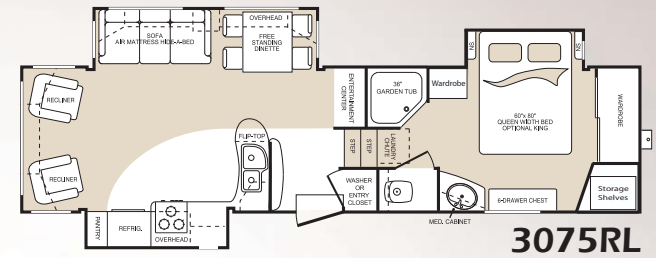
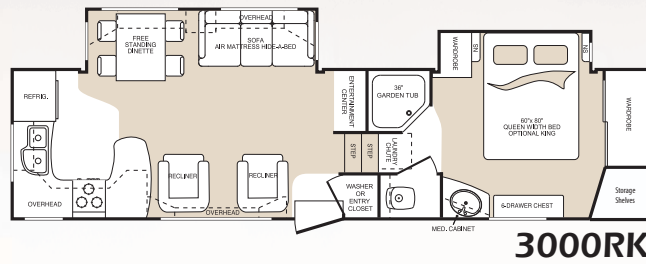
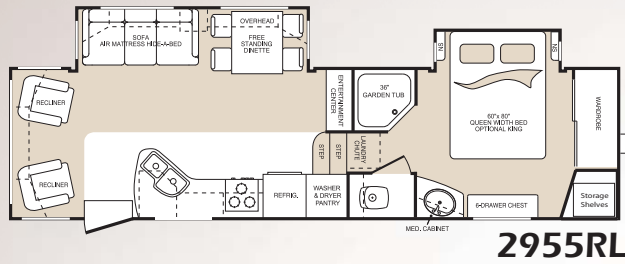
- Max turn front cap and radius frame with Hitch Vision™
- Radius rear cap with easy flow graphics
- Radiant technology roof insulation (R-38 Total)
- 30" deep bedroom slide out (Increased 6")
- 6'- 6" tall main slide outs (Increased 2")
- Easy store rotating sewer boom
- Generation II easy set remote control system
- Hickory cabinet doors and drawers
- Hickory stiles, end panels and crown molding
- Solid hardwood slide out fascia
- 30" OTR Microwave with built in range hood
- Drop frame pass thru storage compartment
- Corian™ kitchen counter tops and sink covers
- Solid surface bathroom lavatory with molded sink
- Seamless underbelly enclosure
- Free standing dinette with swiveling top
- 32" HD LCD TV with pull out tray
- 80 amp XADC converter
- 12 gallon DSI gas/electric water heater
- 50 gallon black tank capacity
- 93 gallon gray tank capacity
- EASY STORE SEWER BOOM
- AUTOMATIC ENTRY LIGHT

MOVING TO MONTANA PACKAGE

- Queen (60 x 80) Innerspring Pillow top Mattress
- Central exterior convenience center
- Dexter E-Z Lube® axles with 8 lug wheels
- MOR/ryde® rubber suspension system
- Arctic insulation package
- Vented attic
- Deep tint safety glass windows
- 15,000 BTU A/C with Quick Cool
- Air mattress hide-a-bed sofa
- Washer/dryer prep
- Convection microwave oven
- Ceiling fan with light kit
- (2) flush mount kitchen sink covers
- Cedar lined front closet
- Dual reading lights over bed
- Wire and Frame for 2nd A/C with Remote sensor and dual zones
- Rear accessory hitch
- 1/2 turn hydraulic selector valves
- Dual high back recliners
- Stamped steel roof rafters
- Welded, aluminum framed walls and floors
- R-9 laminated sidewalls with dual layered luan
- FM/CD/DVD Player with 5.1 surround sound
- RG-6 Satellite prep
- 50 amp service
- Raised panel refer front
- Digital TV antenna with booster
- Deluxe porcelain toilet
- Black tank flush
- Sky dome over the tub
- Hidden safe
- Aluminum wheels
- Range cover
- Fold away entry handle
- Rear roof ladder
- Dual patio security lights
- Under mount spare tire and carrier



Montana Floor Plans



Floor Plan Specifications

MODEL	2955RL	3000RK	3075RL	3150RL	3400RL	3455SA	3465SA	3585SA	3605RL	3665RE
Shipping Weight	10195	10720	11190	11110	12460	12270	11550	11855	11725	12100
Carrying Capacity	3520	3500	3240	2855	3180	3290	3875	3705	3730	3730
Hitch	1715	2220	2260	1965	2140	2060	1925	2060	1955	2045
Exterior Length	33' 3"	35' 6"	34' 8"	34' 5"	37' 4"	37' 4"	37' 4"	37' 4"	37' 3"	37' 3"
Exterior Width	8'	8'	8'	8'	8'	8'	8'	8'	8'	8'
Exterior Height - Top of A/C	12' 9"	12' 9"	12' 9"	12' 9"	12' 9"	12' 9"	12' 9"	12' 9"	12' 9"	12' 9"
Fresh Water Capacity	66	66	66	66	66	66	66	66	66	66
Waste Water Capacity	50	50	50	50	50	50	50	50	50	50
Grey Water Capacity	93	93	93	93	93	93	93	93	93	93
LPG Capacity (lb...)	60	60	60	60	60	60	60	60	60	60
Tire Size	235/80R16E	235/80R16E	235/80R16E	235/80R16E	235/80R16E	235/80R16E	235/80R16E	235/80R16E	235/80R16E	235/80R16E

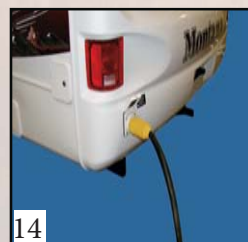
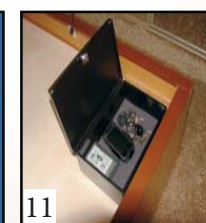


Features



1. Versatile Pantry Drawer.
2. Swiveling/Sliding Table Top.
3. Table Top Leaf Extension and Pull Out Drawer.
4. An Abundance of Kitchen Drawer Storage.
5. Hidden CD/DVD Storage Behind the LCD Television.
6. Hidden Laundry Chute (Non-side Isle Bathrooms)
7. Heated Bath with Residential Porcelain Stool.
8. Lighted Cedar Lined Closet.
9. Hidden Storage Inside the Dresser.
10. Thermostat and Remote Dual Climate Control
11. Under Bed Storage. (Includes a Hidden and Secure Safe)

12. Optional Central Vacuum System for Easy Cleaning
13. Tailgate Compatibility: No Need For Special Tail Gates.
- 14 Detachable 50 Amp Marine Power Cord.
15. Convenient Center Provides Access to all Major Exterior Plumbing Functions and Enclosed Dump Valves.
16. Easy-Lube Axles can be Serviced Without Removing the Wheel.
17. Rotating Sewer Boom for More Versatility when Dumping the Storage Tanks.
18. Attic Vents Allow Excess Moisture to Escape.
19. Mor/ryde™ Suspension- Reduces Road Shock by 30%.



View a video at www.keystone-montana.com

"Ultimate Towability By Applying "Max Turn" Technology"



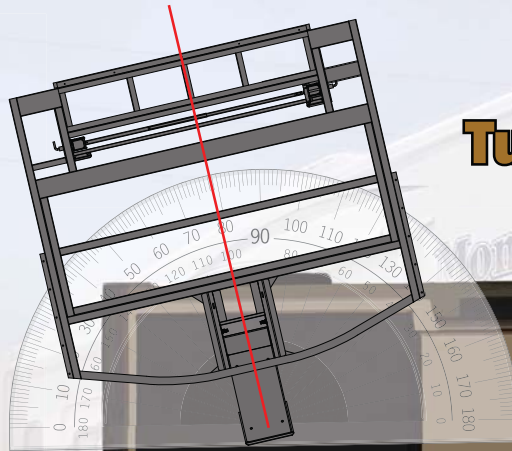
Montana offers an optional infrared back-up camera which provides full view day or night backing.

At Montana, we have designed a patent pending integrated frame and cap design. Not only is it the most aerodynamic front cap, it's downright beautiful. With our "Max Turn" technology, making a 90 degree turn on the street is no problem. In fact, the Montana has an incredible 79 degree truck to fifth wheel angle. It is the best in the industry. With "Max Turn", pulling or backing is no longer a burden.



Our optional Mor/ryde pin box system provides a cushioning sensation despite the harshness of the road. No more clunking sounds during stop/start.

79 Degree Turning Radius!



Montana's Mor/ryde suspension system is state of the art in the industry. This system provides 4" of axle travel with superior equalization for a smoother ride and better control.



Montana

Visit the Montana Owner's Club web site

Independently created and maintained by Montana fifth wheel owners.

www.montanaowners.com



2642 Hackberry Drive

Goshen, IN 46526

574-535-2100

www.keystone-montana.com

Product information is as accurate as possible as of the date of publication of this brochure. Features, floor plans, and specifications are subject to change without notice. Please also consult Keystone's web site at keystonerv.com for more current product information and specifications. **Tow Vehicle Disclaimer: CAUTION: Owners of Keystone recreational vehicles are solely responsible for the selection and proper use of tow vehicles. All customers should consult with a motor vehicle manufacturer or their dealer concerning the purchase and use of suitable tow vehicles for Keystone products. Keystone disclaims any liability or damages suffered as a result of the selection, operation, use or misuse of a tow vehicle. KEYSTONE'S LIMITED WARRANTY DOES NOT COVER DAMAGE TO THE RECREATIONAL VEHICLE OR THE TOW VEHICLE AS A RESULT OF THE SELECTION, OPERATION, USE OR MISUSE OF THE TOW VEHICLE. 04/09**



View the videos available at www.keystone-montana.com

Your Montana Dealer: