

GEARBOX

THEY'LL KNOW YOU'VE ARRIVED
EVEN BEFORE YOU CRANK UP THE
ROCK THE BOX!™ WEATHER RESISTANT EXTERIOR SPEAKERS.

GEARBOX

IT'S WHAT YOU'RE INTO.



TRAVEL TRAILERS AND FIFTH WHEELS

LOADED WITH STANDARD FEATURES | INNOVATIVE FLOOR PLANS | HEAVY-DUTY RAMIP DOOR | ROCK-SOLID!™ CONSTRUCTION | COOL INTERIORS



ROCK THE BOX!™ SOUND SYSTEM (available) includes 720 watts of power and 7 speakers (including a huge sub woofer) which provide awesome sound that will definitely wake the neighbor's dog.



BUILT-IN LCD TV (available) so you can watch the X Games, MTV or even the gardening channel (although your friends may ridicule you all weekend).



CENTRAL CONTROLS & TWO-WAY RADIOS (available) mean you can flip your switches and read your gauges in one place. With four walkie talkies and a built-in charging station, you can wander off and still keep in touch.



PANTRY WITH PULL OUT BASKETS uses easy-to-pack wire baskets in the pantry. Load them up with snacks in the house, and then put them back in the GearBox.

ALL TRICKED OUT AND READY TO ROLL.

GearBox is the ultimate toy hauler, loaded with awesome features. The bells and whistles our competitors call optional, we call standard. Some models feature slide-outs, so you have more space to hang with your buddies. Let the good times roll in the one and only GearBox!



GearBox 395FS3G shown in the Alloy interior.

THE GALLEY is decked out with a refrigerator, 3-burner range, oven and microwave. A solid surface countertop surrounds the double-bowl sink. It holds twice as many dirty dishes — because who wants dishpan hands?



DOUBLE LOFT BED (available) is very roomy, comfortable and sleeps kids, both big and small.



REAR BED WITH ROLLOVER SOFA lets you change your view with your mood. Face the inside of GearBox, the outside, or the ceiling (when you put the back down to get some sleep).



WARDROBE AND HAMPER keeps the clean stuff clean and the dirty stuff hidden. When the fun is done, just take the removable hamper bag directly to the washing machine!

RIDE. CHILL. CRASH. REPEAT.

After you spike your adrenaline on your quad, bike, jet ski or wakeboard, you can chill with a cold one back in your GearBox. The cabinets are sleek, the vibe is cool, and the upholstery is embroidered with the GearBox logo. But this bling can take a beating – it can handle the mud, dusty boots and spilled drinks, and still clean up nice. When it's time to crash, there's sleeping space for up to 10 old and new friends, depending on the model.



THE MASTER BEDROOM provides some private shut-eye space with a relaxing queen-size bed and room for your stuff.



THE FULL-SIZE SHOWER lets you stretch out to soap up. The bathroom also includes a full-size sink, toilet and laundry hamper to quarantine those sweaty socks.

ROCK-SOLID!™ CONSTRUCTION

You live hard and play hard. So we built GearBox tough to stand up to what you dish out.



Drawing is for illustrative purposes only to highlight aspects of GearBox construction. Actual RV design depends on model and is subject to change.

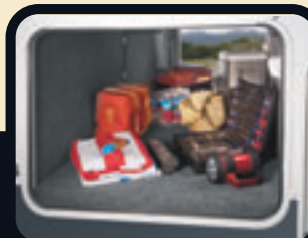
1. **HIGH GLOSS FIBERGLASS SIDING** - This durable and glossy surface is easy to clean, and adds beauty and structural integrity.
2. **FIBERGLASS FRONT CAP** - Improves aerodynamics and styling.
3. **2" x 2" ALUMINUM SIDEWALL STUDS** - Keeps weight down while providing structural integrity to the wall.
4. **SOLID BLOCK EPS INSULATION** - Expanded polystyrene provides additional strength and durability.
5. **WOOD SUBSTRATE** - Adds structural reinforcement to the exterior fiberglass panel.
6. **INTERIOR WALL PANEL** - Features a durable, easy-to-clean, decorative finish.
7. **2" x 3" FLOOR JOISTS** - Provide strong floor construction while allowing for the placement of in-floor furnace ducting.
8. **ENGINEERED 5/8" OSB FLOORING** - Provides the dependable decking needed to ensure an adequate foundation. Further stability is added by interlocking these sheets using tongue and groove construction.
9. **ARMSTRONG® FLOORING** - From the best name in residential flooring.
10. **UNDERBELLY** - Is a durable weather barrier.
11. **R7 FIBERGLASS INSULATION** - As in your home, helps to ensure interior comfort in every season.
12. **ENGINEERED RADIUSED CEILING TRUSS** - Helps to ensure strength and water runoff.
13. **ENGINEERED OSB ROOF SUBSTRATE** - Is designed to maximize strength, is sealed to ensure moisture resistance and provides a solid backbone for the synthetic rubber roof construction.
14. **ONE-PIECE SEAMLESS SYNTHETIC RUBBER ROOF MEMBRANE** - Provides the ideal weather seal and is warranted for 12 years.
15. **REINFORCED CAMBERED STEEL CHASSIS** - Provides optimal strength, durability, and performance.
16. **DUCTED IN-CEILING AIR CONDITIONING** - Efficiently distributes cool air.



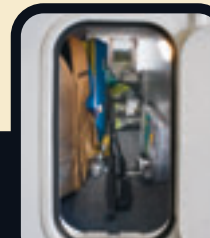
RAMP DOOR SCREEN (available) pulls down with one hand to keep the flying critters out and let the breeze in. It sports the GearBox logo that can be seen by your envious neighbors, but doesn't obstruct your outward view. How did they do that?



AIR COMPRESSOR (available) is perfect for inflating dirt bike tires or balloon animals. (Be the life of the party! Impress your friends!)



PASS-THROUGH STORAGE is where you put the XXL stuff like camp chairs, awning mat, BBQ, firewood and gear bags.



FRONT CAP PASS-THROUGH STORAGE makes for easy access and storage of lengthy items such as paddles and fishing poles.



THE FUELING STATION (available) lets you gas up and ride off fast. With dual tanks holding 30 gallons and 18 gallons respectively, you can lose the jugs!



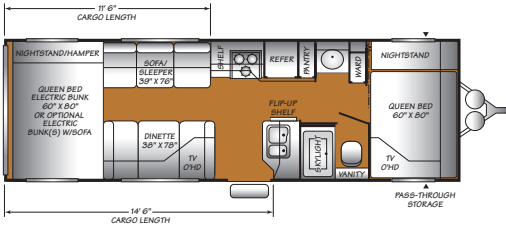
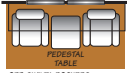
THE RAMP EXTENSION makes it easier to load your toys with this heavy-duty diamond-plate panel that flips over to cover the lip of the ramp door.



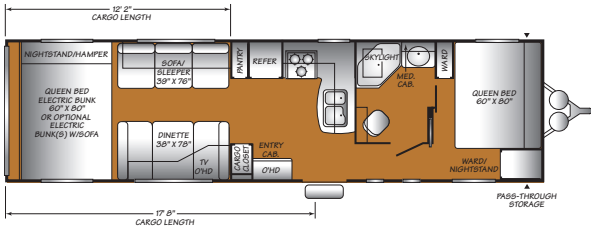
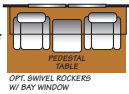
ALUMINUM INTERIOR/EXTERIOR WORK BENCH (available), is the best spot for keeping your tools and refreshments within easy reach.

TRAVEL TRAILER FLOOR PLANS

260FS Sleeps 6-10*



290SA Sleeps 6-10*

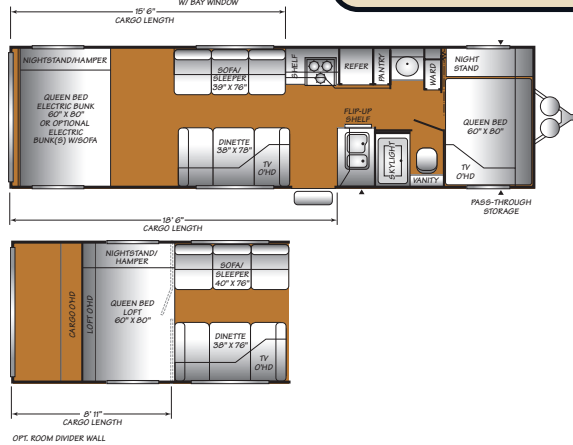
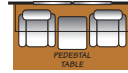


EXTERIOR FEATURES

- HEAVY DUTY RAMP** is rated for 3,500 pounds, with its "beavertail" departure angle, extra-long length and integrated locks, loading and unloading is almost fun.
- RAMP SPRINGS** are concealed to protect them against the elements and makes for a nice, clean-looking rig.
- AERODYNAMIC FRONT CAP (AVAILABLE)** is made of molded fiberglass and makes other toy haulers look lame in comparison.
- WEATHER-RESISTANT SPEAKERS** win the stereo wars every time.
- WHEEL WELLS** don't take up precious storage space in the cargo area. Our competitors wish they had thought of this.
- AIR CONDITIONING** ducts are in the ceiling spreading cool air to all corners of GearBox to help you chill out fast.

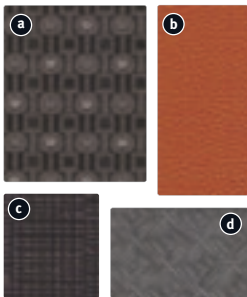


300FS Sleeps 6-10*



GEARBOX INTERIOR DÉCOR CHOICES

ALLOY



- a** SOFA
- b** SOFA & DINETTE ACCENT
- c** DINETTE CUSHIONS
- d** BEDSPREAD

FREESTYLE



- a** SOFA
- b** DINETTE CUSHIONS
- c** SOFA & DINETTE ACCENT
- d** BEDSPREAD

SHOCKIN' BLUE



- a** SOFA & DINETTE CUSHIONS
- b** SOFA
- c** VALANCE ACCENT
- d** BEDSPREAD

SAND DUNE



- a** SOFA
- b** DINETTE CUSHIONS
- c** SOFA & DINETTE ACCENT
- d** BEDSPREAD



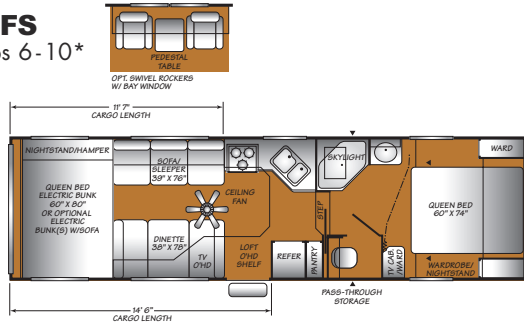
CLEAR OAK
(Available on Freestyle & Sand Dune)



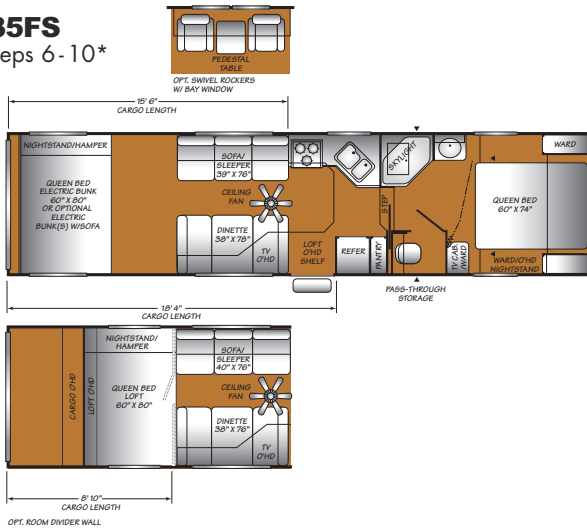
SILVER
(Available on Alloy & Shockin' Blue)

FIFTH WHEEL FLOOR PLANS

295FS
Sleeps 6-10*



335FS
Sleeps 6-10*

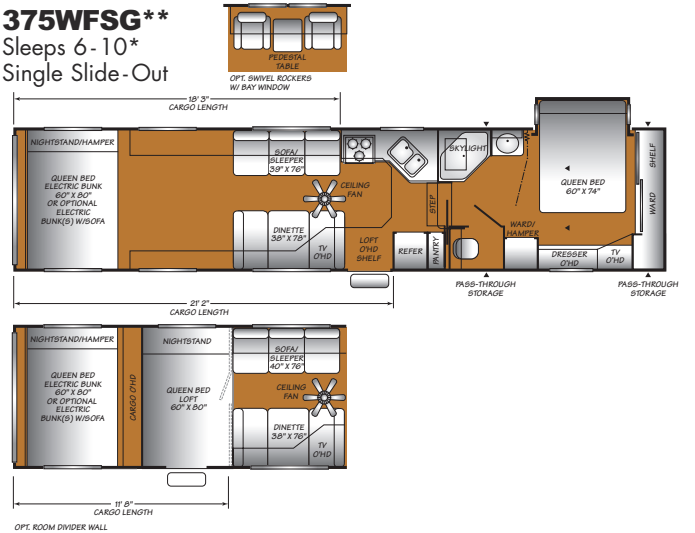


▲ = Exterior storage

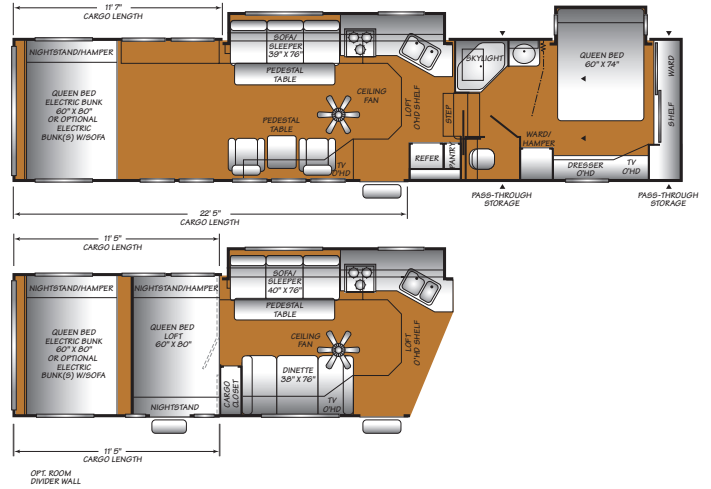
*Sleeping capacity is a variable number and is affected by items such as size of occupant, options and floor plan. Some models are not available in all areas of the country. Please see your local dealer for model availability.

**375WFSG features a full 102" exterior width.

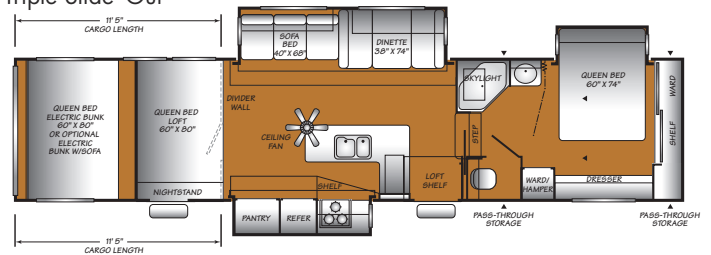
375WFSG**
Sleeps 6-10*
Single Slide-Out



385FS2G
Sleeps 6-10*
Double Slide-Out



395FS3G
Sleeps 10*
Triple Slide-Out



WEIGHTS AND MEASUREMENTS

GEARBOX	TRAVEL TRAILERS				FIFTH WHEELS			
	260FS	290SA	300FS	295FS	335FS	375WF5G	385FS2G	395FS3G
WEIGHTS								
GVWR (lbs) ¹	11,400	14,500	14,000	13,800	14,300	17,000	17,200	17,500
Gross Dry Weight (lbs) ^{2,6}	6,980	7,700*	7,960	8,250	8,580	10,270	11,730	12,570
Cargo Carrying Capacity (lbs) ^{3,6}	4,420	6,800*	6,040	5,550	5,720	6,730	5,470	4,930
Hitch Dry Weight (lbs) ^{2,6,8}	1,110	1,150*	1,280	1,980	2,120	2,360	2,460	2,860
DIMENSIONS & CAPACITIES								
Length (Feet & Inches) ^{4,6}		35' 0"	33' 11"	31' 5"	35' 3"	38' 11"	39' 11"	39' 11"
Height (Feet & Inches) ^{5,6}		12' 2"	12' 2"	12' 9"	12' 9"	13' 1"	13' 5"	13' 5"
Fresh Water Holding Tank (gal) ^{6,7}		120	120	120	120	120	120	120
Grey Water Holding Tank (gal) ^{6,7}		55	55	55	55	55	55	55
Black Water Holding Tank (gal) ^{6,7}		40	40	40	40	40	40	40
Propane Capacity (lbs) ^{6,7}		60	60	60	60	60	60	60
Tire Size (Load Range)		ST225/ 75R15(D)	ST225/ 75R15(D)	ST235/ 80R16(D)	ST235/ 80R16(D)	ST235/ 80R16(D)	ST235/ 80R16(D)	ST235/ 80R16(D)

GEARBOX – FEATURES

INTERIOR

- Sidewall Located Cargo Tie Downs S
- 6 Gallon Propane/Direct Spark Ignition Water Heater w/Bypass S
- Phone Jack S
- Commercial Grade Vinyl Flooring S
- Flush Floor Cargo Tie Downs S
- Full Systems Monitor Panel S
- Hydroflame Forced Air, Direct Spark Ignition Furnace S
- Large Overhead Cabinets and Cabinet Doors S
- Ceiling Fan (Fifth Wheels) S
- Whole Coach Water Filtration System S

LIVING ROOM

- Built-In TV Compartment S
- Fold-Away Dinette/Sleeper S

GALLEY

- Sink Lids S
- 22" Maytag® 3-Burner (1 High-Output) Range w/Oven S
- 8 cu. ft. Dometic® Double Door Refrigerator S
- Adjustable Shelves Galley Overhead S
- Galley Cabinets w/Adjustable Shelves S
- Adjustable Wire Pantry Baskets S
- Cutting Board S
- Fluorescent Lighting S
- Halogen Accent Lighting S
- Range Hood w/12V Light & Exhaust Fan S
- Deluxe Paper Towel Holder S
- Undersink Waste Basket S
- Residential Style Solid Composite Galley Countertop w/Integrated Double Bowl Sink S
- Built-In Spice Shelf (Select Models) S
- Flip-Up Counter Extension (Select Models) S

BEDROOM

- Black Out Bedroom Ceiling Vent (Select Models) S
- Mini Blinds S
- Queen Size Bed w/Under Bed Storage (Select Models) S

BATHROOM

- ABS Tub/Shower Walls S
- Clothes Hamper S
- Removable Wire Baskets S
- Towel Bars (2) & Ring S
- Glass Tub/Shower Enclosure (Select Models) S
- Residential Style Solid Composite Lavvy Countertop w/Integrated Sink S
- Porcelain Foot Pedal Toilet S
- Wardrobe w/Ventilated Hanger/Shelving (Select Models) S

INTERIOR SAFETY/ CONVENIENCE

- Carbon Monoxide Detector/Alarm S
- Fire Extinguisher S
- Propane Detector/Alarm S
- Smoke Detector/Alarm S

EXTERIOR

- 3,500 lb. Ramp Door Rating S
- 7' 2" Ramp Door w/Integrated Locks, Protective Stop Bumpers & Non-Skid Surface S
- Deep Tint Safety Glass Windows S
- Dual 7 Gallon (30 lb.) Propane Tanks w/Sight Gauge S
- EZ Lube Axles S
- Ice Chest/Tool Box S
- Low Pressure Propane Bib w/Quick Release Fitting S
- Propane Tank Cover (Travel Trailer Models) S
- Fresh Water Tank Quick Drain Knife Valve S
- R 11 Fiberglass Insulation (Ceiling) S
- R 7 Fiberglass Insulation, (Floor, Sidewall, Front Section) S
- Triple Entry Step S

EXTERIOR SAFETY/ CONVENIENCE

- 120V GFI Circuit Protection (Galley/Bath/Patio) S
- 120V Patio Receptacle S
- Back-Up Lights S
- Illuminated Light Switches at Entry/Cargo Door(s) S
- Safety Glass Windows S

STORAGE

- Luggage Doors Radius Corner (Where Applicable) S
- Ozite Carpeted Luggage Compartments S
- Power Cord Storage S

BODY STRUCTURE

- Cambered Chassis S

OPTIONS

- 12V Power Jack O
- Family 2 Way Radios (4) w/Charging Station O
- Central Vacuum O
- Electric 12V Loft Bunk(s) w/Sofa O
- LCD Flat Screen TV O
- Rock the Box! Audio Entertainment System (720W - 7 Speaker, Satellite & MP3 Ready Stereo System w/ Dedicated Power Converter & External Controls) O
- Comfort Air Power Roof Vent S
- Aluminum Int/Ext Work Bench S
- Power Wench w/Cable Remote S
- Retractable Ramp Door Screen S
- Partition w/ Logo S
- Swivel Rockers w/Bay Windows S
- Vapor Wall (Select Models) S
- 5.5 kW Gen. (Onan®) w/Pump Station (30 & 18 Ga1. Tanks) S
- Generator Ready w/Pump Station (Dual Tanks, 30 & 18 Gallon Tank) S
- Integrated 3 Gal. Air Tank S
- Compressor w/25 ft. Hose S
- Exterior Spot Light S
- RVQ Exterior BBQ S

- Heated Holding Tanks O

INTERIOR VALUE PACKAGE

- 15,000 BTU Air Conditioner O
- Electric 12V Loft Bunk W/Queen Mattress, Bunk Ladder & Privacy Curtain S
- Microwave w/Electronic Touch Pad S
- AM/FM/CD Stereo w/4 Cube Speakers & Subwoofer S
- Commercial Grade Carpet Kit S
- 50 AMP Service S
- Medicine Cabinet w/Mirrored Door & Adjustable Shelves S
- Power Exhaust Roof Vent S
- Skylight S
- Cable TV Hookup S
- TV Cabinet/Shelf (Select Models) S
- Satellite Antenna Prep S

EXTERIOR VALUE PACKAGE

- Beavertail Departure Angle (Cargo Floor) O
- High Gloss Fiberglass Laminated Sidewalls w/Welded Alum. Frame O
- EZ Lift Ramp Door W/Integrated Locking Hardware & Extension O
- Front Fiberglass Cap O
- Weather Resistant Exterior Speakers O
- Exterior Washer w/Pressurized Nozzle O
- Base Camp Flood Lights (2) O
- Chassis Mount Spare Tire (Radial) O
- TV Antenna O
- Heavy Duty Walk On Roof w/Cargo Rack and Ladder O
- Custom Chrome Wheels O
- W/GearBox Logo Center Caps O
- Checkered Flag Patio Awning O
- Exterior Shower O
- Tank Flush System (Solid Tank) O
- Scissor Stab Jacks O
- Shock Absorbers O
- Large Folding Entry Door Grab Bar O

1. GVWR (Gross Vehicle Weight Rating) is the maximum permissible weight of this trailer when fully loaded. It includes all weight at the trailer axle(s) and tongue or pin.

2. All dry weights are based on the standard model and do not include optional features or equipment.

3. Cargo Carrying Capacity is determined by subtracting Gross Dry Weight from GVWR. Cargo Carrying Capacity includes all fluids, optional features, equipment, and personal cargo.

4. Length taken from hitch or pin box to rear bumper (excludes accessories). Trailer length includes hitch; fifth wheel includes standard pin box.

5. Actual height may be lower, based on option offerings. Consult with your dealer to obtain actual height for the unit you are interested in.

6. Approximate.

7. Water weight equals 8.3 lbs. per gallon. Propane weight equals 4.2 lbs. per gallon.

8. Hitch weights are dependent upon how the trailer is equipped with options, on-board cargo and tank fluid levels. Actual hitch weights may be higher or lower than shown. It is recommended that the tow vehicle and hitch for your trailer have sufficient capacity to accommodate actual usage.

* = Estimated weights.

Toy haulers feature a body width over 96" which will restrict your access to certain roads. Before purchasing, you should research any state and/or province road laws which may affect your usage.

IMPORTANT—PLEASE READ
Product information, photography and illustrations included in this publication were as accurate as possible at the time of printing. For further product information and changes, please visit our website at www.fleetwoodrv.com or contact your local Fleetwood dealer. Prices, materials, design and specifications are subject to change without notice. All weights, fuel, liquid capacities and dimensions are approximate. Fleetwood has designed its recreational vehicles to provide a variety of uses for customers. Each vehicle features optimal seating, sleeping, storage and fluid capacities. The user is responsible for selecting the proper combination of loads (i.e.: equipment, fluids, cargo, etc.) to ensure that the vehicle's capacities are not exceeded.

WHY GEARBOX?



PASSION

We're truly passionate about the RV lifestyle. Fleetwood was founded by RV enthusiasts, and that tradition continues today.



QUALITY

There's no cutting corners. Skilled craftsmen build every Fleetwood RV for maximum durability and longevity.



WARRANTY

Exclusive RV Ownercare warranty. See your Fleetwood dealer for details.



SERVICE

Help is nearby. When you need an upgrade or repair, you'll find facilities all across North America and more than 1,100 dealers ready to assist you.



TRUST

More people trust Fleetwood. After all, we've spent over 50 years perfecting RVs, earning the loyalty of generations of RVers.

CONTACT US

To locate a dealer near you, visit our website at www.fleetwoodrv.com or call 1-800-444-4905. We can also be contacted at Fleetwood Customer Relations, P.O. Box 1007, Decatur, IN 46733.

FLEETWOOD TRAVELCADE CLUB

As a Fleetwood owner, you're eligible to become a member of the Fleetwood Travelcade Club. It's a perfect way to meet other Fleetwood owners who love to travel across America and share in the RV lifestyle. Call (877) 577-2560 or visit our website at www.fleetwoodrv.com/owners_clubs to learn more and join the fun!

RV OWNERCARE*

See your local dealer for complete details.

IMPORTANT—PLEASE READ

Product information, photography and illustrations included in this publication were as accurate as possible at the time of printing. For further product information and changes, please visit our website at www.fleetwoodrv.com or contact your local Fleetwood dealer. Prices, materials, design and specifications are subject to change without notice. All weights, fuel, liquid capacities and dimensions are approximate. Fleetwood has designed its recreational vehicles to provide a variety of uses for customers. Each vehicle features optimal seating, sleeping, storage and fluid capacities. The user is responsible for selecting the proper combination of loads (i.e.: equipment, fluids, cargo, etc.) to ensure that the vehicle's capacities are not exceeded.

Your Local Fleetwood Dealer Is:



*For complete info see your Fleetwood dealer.

©2006. Fleetwood Enterprises, Inc. Printed in U.S.A.
2nd Edition GB07B2, 11/06.

TO OUR CUSTOMERS...

To make sure that you get the maximum satisfaction out of your recreational vehicle purchase, there are several things you should know:

1. Learn all you can about the travel trailer or fifth wheel you're planning to buy. Don't rely on word of mouth. Get the facts about the actual trailer length, width, unloaded weight with options, Gross Vehicle Weight Rating, and Cargo Carrying Capacity. These are usually available in the manufacturer's sales literature or from the Cargo Carrying Capacity Label located in each trailer. Be sure to check this information before you decide which unit to buy.
2. Verify the towing capacity of your tow vehicle. If you don't know, or aren't sure, you can ask at your automotive dealership. Be sure to match its tow rating to the loaded (not dry) weight of your trailer. Include the weight of water, additional accessories, clothing, food, and gear. To help Fleetwood travel trailer customers estimate this total weight, our Gross Vehicle Weight Ratings reflect the maximum weight of the trailer when fully loaded for camping. Be sure the weight of the tow vehicle plus the weight of your trailer do not exceed the Gross Combined Weight Rating of the tow vehicle.

Taking these simple steps before you buy will help ensure that your trailer and tow vehicle combination is just what you wanted.

See you on the trail!

treadlightly!
LEAVING A GOOD IMPRESSION



Fleetwood's Ultimate Extreme Line - brought to you by a group of dedicated RV professionals that understand and enjoy the toy hauler lifestyle as much as you do!

FLEETWOOD
Travel Trailer Division