



Discovery

Take Charge.



DISCOVERY-Class A Diesel-2006



TIME IS PRECIOUS AND THERE
IS MUCH FUN TO BE HAD. THE WORLD
IS WAITING WITH OPEN ARMS
AND THERE ARE PEOPLE TO MEET AND
PLACES TO SEE ALONG THE WAY.
LIFE IS AN ADVENTURE WAITING JUST
AROUND THE CORNER. HAVE FUN.





Discovery 39S shown in Cafe Milan interior decor with Windsor Birch wood finish.



Fresh Perspective.

For '06 a redesigned Discovery is the ultimate conversation starter while you're out exploring the road. An improved interior boasts 84" ceilings, giving you plenty of room to move around comfortably, while larger windows improve

lighting for a more open feel to enjoy even the longest of journeys. The exterior features all new front/rear caps for a dynamic look and all new exterior graphics to enhance curb appeal. Enjoy an unprecedented experience in adventure.



OVERHEAD STORAGE is an ideal place to keep board games, books or anything else for your travels.

THE FRONT ENTERTAINMENT CENTER boasts a sleek totally redesigned home theater cabinet with 27" flat screen TV, a VCR and home theater sound system. You'll also enjoy functional storage space, great for additional entertainment components.



SOFA SLEEPER, (optional) features a comfortable air mattress for a goodnight's rest, and luxurious Ultraleather™, which is easy to clean and stain resistant.



THE ULTRALEATHER™ FLEXSTEEL® PASSENGER SEAT includes optional electric foot rest and power adjustments, allowing you to automatically customize position/height for a luxurious traveling experience.

A Great Galley.

Thanks to Discovery's well-equipped galley it's all yours, the most convenient cooking experience imaginable. Enjoy features like the roll out countertop that locks in place (select models only) and solid surface sink lid covers, giving

you more counter space to prepare meals. A 3-burner cook-top makes cooking a breeze, while elegant solid surface countertops are non-porous and scratch/stain resistant.



GALLEY SINK features an elegant stainless steel single lever faucet and a convenient soap dispenser for quick and easy clean up.

DELUXE FULL EXTENSION, ROLLER BEARING DRAWER GUIDES on the drawers throughout the coach, give you full access for convenient storage.



THE DINETTE features spacious seating for four, convenient pull-out storage drawers underneath and a large window for a great view of your surroundings.



CENTRAL VACUUM (optional) is a very convenient feature to have handy for cleaning up quick.



BUILT-IN COFFEE MAKER is conveniently located out of the way providing more counter space.



LARGE (1.4 CU. FT.) CONVECTION MICROWAVE does what an oven does in a fraction of the time—fish, steaks, even a whole chicken.





Comforting.

You'll forget you're away from home in Discovery's comfortable and accommodating bedroom. A queen-size Restonic® pillow top mattress is a wonderful luxury to have on the road, and integrated toe kicks on all the cabinets provide a nice residential feel.

You'll also have plenty of room for clothing, linens and towels thanks to the convenient overhead storage space. You'll also enjoy a whole coach water filtration system throughout, giving you filtered water for drinking and brushing your teeth.



A 20" FLAT SCREEN TV conveniently swivels to your liking for comfortable viewing.

THE WASHER/DRYER COMBO (optional) makes laundry a breeze, and is concealed in a cabinet.

A BEDROOM VANITY with second sink (standard on the 39J and 39S) is a handy alternative to a busy bathroom. A good place to shave or wash up.

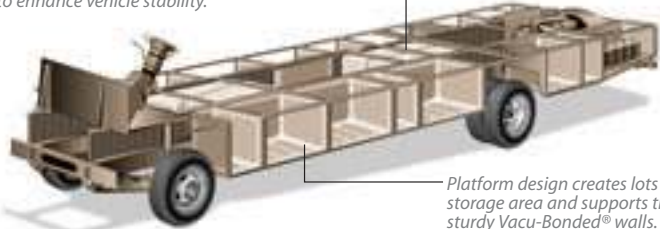
MIRRORED-DOOR WARDROBE comes fully equipped with lighting, residential racks and organizers, and is lined with cedar to keep clothes smelling fresh and moth-free.

THE BATHROOM features an elegant glass enclosed shower with skylight, cabinet with toe kicks so you can stand next to the counter without leaning over and a Fan-Tastic® powered roof fan for great ventilation.

Discovery

Holding tanks are positioned in the bottom center of the platform to enhance vehicle stability.

Holding tanks are enclosed between the upper and lower basement floors. This allows them to be heated to prevent freezing in cold weather.



Platform design creates lots of storage area and supports the sturdy Vacu-Bonded® walls.

POWER PLATFORM CONSTRUCTION

Fleetwood's patented Power Platform begins with two 10-in. steel I-beams welded lengthwise to the chassis. From the beams, steel outriggers extend outward. Together, they create a basement for fluid tanks and storage while supporting the floor, walls and roof with a rigid metal frame. This complements the chassis to make it even stronger.

* Drawings are for illustrative purpose only to highlight aspects of motor home construction. Actual motor home design depends on model and is subject to change.

PATIO AND ENTRY DOOR AWNINGS (electric standard) provide shade from the sun.

A 2 STAGE DUPONT® PAINT PROCESS (full-body paint standard) is carefully applied for maximum durability and a sleek exterior look. This process ensures only the best in quality and appearance.

STORAGE COMPARTMENTS line both sides of coach. Compartments include lights, gas-lift strut supports, stainless-steel hinges and insulated aluminum doors.



STANDARD DUAL AIR CONDITIONING UNITS
Discovery has maximum cooling capabilities and plenty of storage because its A/C units are mounted on the roof, not the basement.

LEVELING SYSTEM
A fully automatic 4-point leveling system levels your Discovery with a one-button push, or a do-it-yourself manual override.

Vehicle shown in White Diamond full-body paint.



A CAT® C7 330 HORSE POWER ENGINE comes standard in Discovery, providing supreme driving and towing power.

A PULL-OUT STORAGE BASKET makes for easy loading and unloading, while keeping small items together.

EXTERIOR ENTERTAINMENT CENTER (optional) features an AM/FM radio with CD player and a 20" TV on a convenient pull out shelf.

THE UTILITY COMPARTMENT provides a central place to empty your holding tanks and includes a water sprayer for quick clean up. For your convenience the compartment is lighted and all components are clearly marked.

STYLISH WRAP-AROUND DASH features tilt and telescoping steering wheel for your convenience, read-at-a-glance gauges and easy-to-reach controls. A 6 Disc CD player with Sirius® satellite radio is optional (6 month subscription is included).

KEYLESS REMOTE ENTRY is a very convenient feature that makes locking and unlocking your RV easy as the push of a button.

POWER SUN VISORS easily adjust to shade your eyes when you're on those long sunny afternoon adventures.

AN OPTIONAL SPOT LIGHT swivels 180° for easy sight in the dark.

FOUR EXTERIORS, THREE INTERIORS. THE CHOICE IS YOURS.

For 2006, mix and match from four diverse exterior graphics and three interior fabric motifs—With each interior, you can choose from one of three wood finishes. 36 combinations in all.

DISCOVERY EXTERIOR GRAPHICS



Stone (opt#501)



White Diamond (opt#502)



Pine (opt#503)



Spice (opt#504)

DISCOVERY INTERIOR DECOR

STONEHENGE

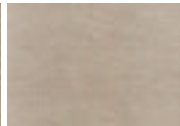
Living/Dining Room



Sofa Bed & Dinette Cushions



Throw Pillow



Ultraleather™ Driver & Front Passenger Seats

Bedroom



Bedspread



Pillow Shams



Throw Pillow

SEASIDE

Living/Dining Room



Sofa Bed & Dinette Cushions



Throw Pillow



Ultraleather™ Driver & Front Passenger Seats

Bedroom



Bedspread



Pillow Shams



Throw Pillow

CAFE MILAN

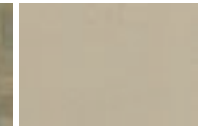
Living/Dining Room



Sofa Bed



Throw Pillow



Ultraleather™ Driver & Front Passenger Seats

Bedroom



Bedspread & Throw Pillow



Pillow Shams

INTERIOR WOOD FINISHES



Plantation Cherry



Windsor Birch



Fairfield Maple

What Drives You?

Maybe it's feeling like you're the only one on Earth. Perhaps it's the unique sense of closeness with the great outdoors. Or, it might be the joy that comes from spending quality time with family and friends. Whatever the reason, we know that you have a strong drive to experience everything that comes with spending time on the road. And for more than 50 years, we've shared that passion with you. Because we're RV enthusiasts ourselves, you can see our passion in the vehicles we design and build. Own a Fleetwood, and you'll feel like you're not just traveling, but embarking on an experience unlike any other. Set your own course for adventure and get out there and explore the world around you. Once you do, you'll see what it is that drives us — it's you.



RV OWNERCARE* is a limited one-year/15,000-mile coach warranty and three-year/50,000-mile structural warranty, whichever occurs first, and it is fully transferable for the first 12 months. RV OWNERCARE is one of the RV industry's most comprehensive programs and includes systems, appliances, components and construction, with no deductible and no service charge. RV OWNERCARE coverage is provided from a company that will be around in the future to service your needs. See your nearest Fleetwood dealer for a full explanation of benefits and restrictions.

FLEETWOOD TRAVELCADE CLUB As a Fleetwood owner, you're eligible to become a member of our owners' group, Fleetwood Travelcade Club. It's a perfect way to meet other Fleetwood owners who love to travel across America and share in the RV lifestyle. Call (877) 577-2560 and join the fun! Or visit www.fleetwood.com/clubs to learn more. For Discovery specific club information contact: Discovery Owners Association, Inc., www.discoveryowners.com, (888) 594-6818 or Discovery International Chapter of FMCA www.difmca.com.

FLEETWOODRV.COM To locate a dealer near you, visit our website or call 1-800-444-4905. We can also be contacted at Fleetwood Customer Relations, P.O. Box 7638, Riverside, CA 92513-7638.

IMPORTANT—PLEASE READ Product information, photography and illustrations included in this publication were as accurate as possible at the time of printing. For further product information and changes, please visit our website at www.fleetwoodrv.com or contact your local Fleetwood dealer. Prices, materials, design and specifications are subject to change without notice. All weights, fuel, liquid capacities and dimensions are approximate. Fleetwood has designed its recreational vehicles to provide a variety of uses for customers. Each vehicle features optimal seating, sleeping, storage and fluid capacities. The user is responsible for selecting the proper combination of loads (i.e.: occupants, equipment, fluids, cargo, etc.) to ensure that the vehicle's capacities are not exceeded.

Your local Fleetwood dealer is:



www.fleetwoodrv.com

*For complete info see your Fleetwood dealer. ©2005. Fleetwood Enterprises, Inc.
Printed in the USA. Inventory control number DI06B1 6/05.





DISCOVERY-Floor Plans, Standard Features and Options

Discovery



DISCOVERY-Class A Diesel-2006

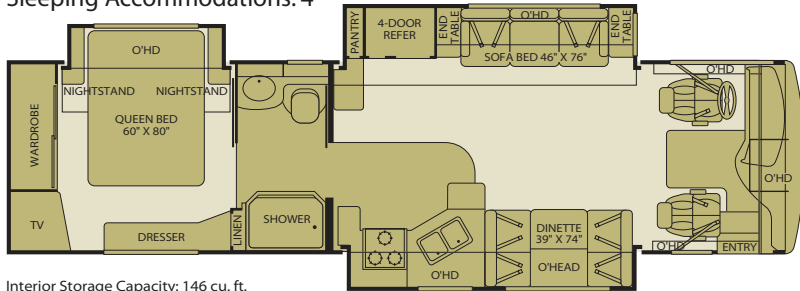


Floor Plans

35H

Triple Slide-Out

Sleeping Accommodations: 4*

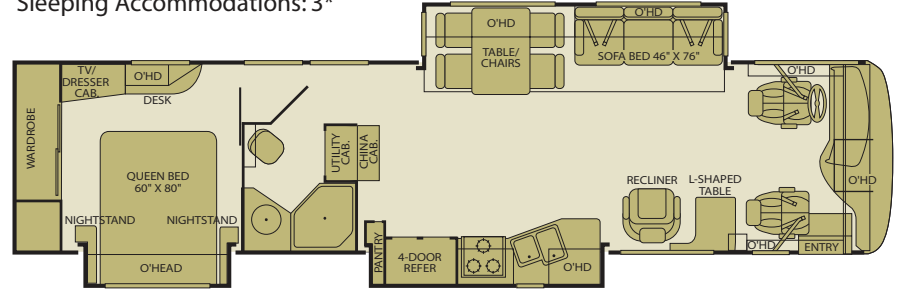


Interior Storage Capacity: 146 cu. ft.
Exterior Storage Capacity: 94 cu. ft.

39C

Triple Slide-Out

Sleeping Accommodations: 3*

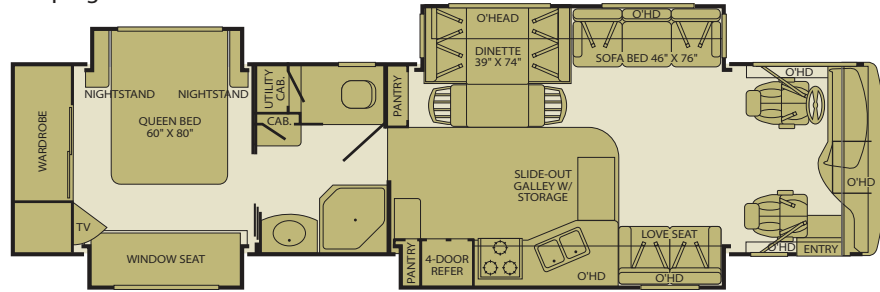


Interior Storage Capacity: 156 cu. ft.
Exterior Storage Capacity: 119 cu. ft.

39L

Quad Slide-Out

Sleeping Accommodations: 4*

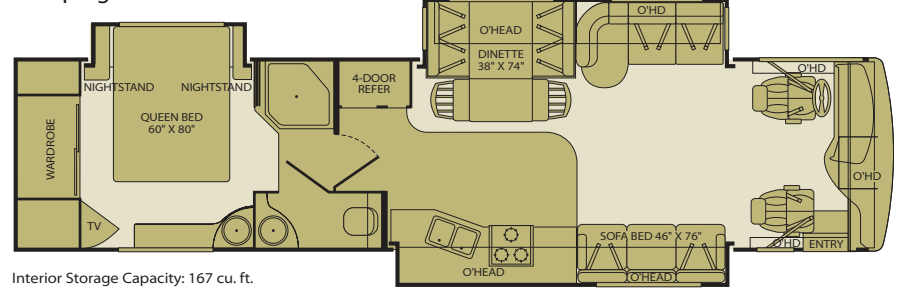


Interior Storage Capacity: 189 cu. ft.
Exterior Storage Capacity: 127 cu. ft.

39S

Triple Slide-Out

Sleeping Accommodations: 5*



Interior Storage Capacity: 167 cu. ft.
Exterior Storage Capacity: 127 cu. ft.

Options

OPT. 126 WASHER/DRYER
Available on:
All floor plans

OPT. 173 ULTRALEATHER LOVE SEAT
Available on: 39C,
39L, 39V

OPT. 174 ULTRALEATHER SOFA
Available on: 35H, 39C,
39J, 39L, 39V

OPT. 175 ULTRALEATHER J-LOUNGE
Available on: 39J, 39S

OPT. 197 DUAL SWIVEL RECLINERS W/TABLE
Available on: 39J, 39L,
39S, 39V

OPT. 200 ULTRALEATHER SOFA SLEEPER W/AIR MATTRESS
Available on: All floor plans

OPT. 201 ULTRALEATHER SOFA SLEEPER W/AIR MATTRESS
Available on: 39S

OPT. 357 SLIDE-OUT BEDROOM ENTERTAINMENT CENTER
Available on: 39L

OPT. 491 ULTRALEATHER SWIVEL RECLINER
Available on: 39V

OPT. 497 PASSENGER SEAT W/FOOTREST
Available on:
All floor plans

OPT. 700 COMPUTER WORKSTATION
Available on: 39J, 39L,
39S, 39V

OPT. 804 ULTRALEATHER SOFA BED
Available on:

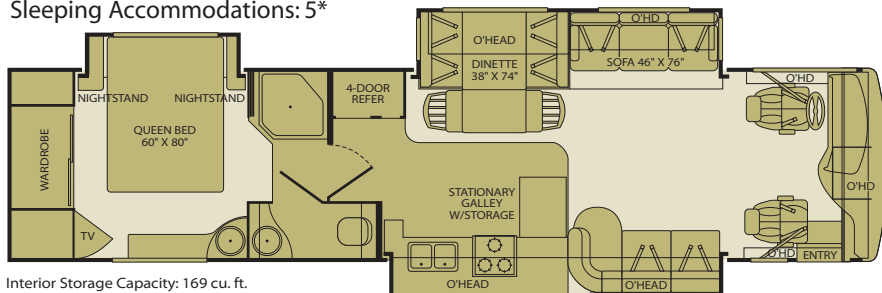
OPT. 821 RECLINER W/TABLE
Available on: 39J

Seatbelt configuration may vary depending on options chosen.

*Sleeping accommodations are based on designed sleeping areas and may be greater than Sleeping Capacity Weight Rating (SCWR) found on the Cargo Carrying Capacity label located in

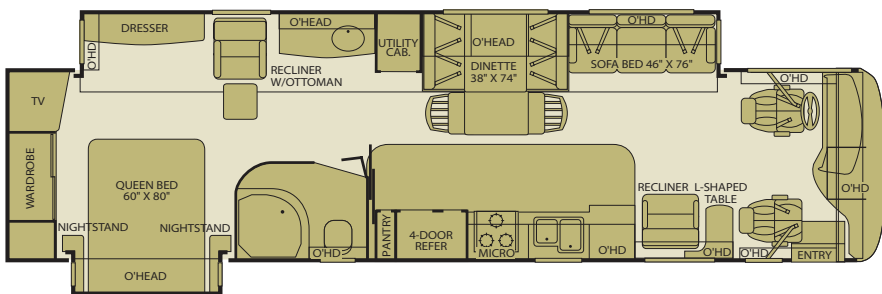


39J
Triple Slide-Out
Sleeping Accommodations: 5*



Interior Storage Capacity: 169 cu. ft.
Exterior Storage Capacity: 127 cu. ft.

39V
FEATURING A FULL WALL SLIDE
Double Slide-Out
Sleeping Accommodations: 4*



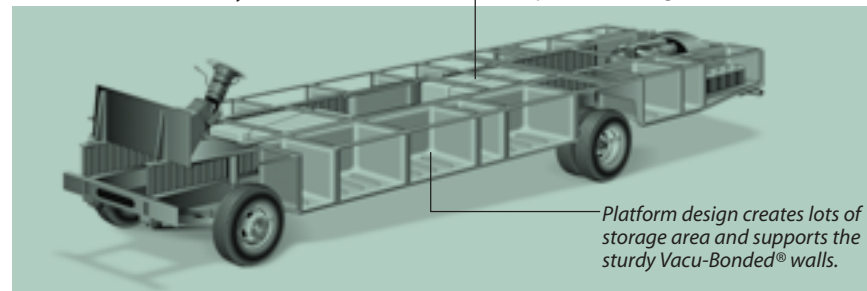
Interior Storage Capacity: 177 cu. ft.
Exterior Storage Capacity: 147 cu. ft.

POWER PLATFORM CONSTRUCTION

Fleetwood's patented Power Platform begins with two 10-in. steel I-beams welded lengthwise to the chassis. From the beams, steel outriggers extend outward. Together, they create a basement for fluid tanks and storage while supporting the floor, walls and roof with a rigid metal frame. This complements the chassis to make it even stronger.

Holding tanks are positioned in the bottom center of the platform to enhance vehicle stability.

Holding tanks are enclosed between the upper and lower basements of the platform. This allows them to be heated to prevent freezing in cold weather.



Platform design creates lots of storage area and supports the sturdy Vacu-Bonded® walls.



Inter-locking Ceiling-to-Sidewall Connection

Inter-locking Floor-to-Sidewall Connection

Vacu-Bond® Sidewall Construction

Setting The Standard In Motor Home Quality.

Fleetwood® prototypes are exposed to thousands of miles of durability testing. Those components that don't survive are redesigned until they do. This sets our standard in safety and durability.

Fleetwood's patented Power Platform supports the body with a rigid frame that reinforces the chassis to make it even stronger. This allows Fleetwood to offer triple and quad slide-outs.

For each outer wall, Fleetwood uses one seamless, solid piece of its exclusive Tuff-Coat® fiberglass composite. It resists UV rays, cracks and impacts. Our products look newer longer and that's a big plus at resale time.

To assure a strong, weather-resistant structure, Fleetwood Vacu-bonds® all sidewalls, floors and ceilings to a durable aluminum or steel frame. The Vacu-bond® process is unmatched by many competitors.

Fleetwood sinks and shelves are designed to handle full-size kitchenware. Few competitors can say the same.

Drawings are for illustrative purpose only to highlight aspects of motor home construction. Actual motor home design depends on model and is subject to change.

| | | | | | |
|---|--|--|--|---|--|
| <p>ULTRALEATHER D Available on: 39S</p> | <p>OPT. 832 FREE-STANDING DINETTE Available on: 39J, 39L, 39S, 39V</p> | <p>OPT. 833 FREE-STANDING DINETTE W/CREDENZA Available on: All floor plans</p> | <p>OPT. 834 SIDE DINETTE Available on: 39C</p> | <p>OPT. 874 DESK W/ FOLD-UP CHAIR Available on: 39L</p> | <p>OPT. 855 QUEEN BED W/AIR MATTRESS Available on: All floor plans</p> |
|---|--|--|--|---|--|

Label located in each RV. Sleeping accommodations are based on standard layout. Optional furniture may increase or decrease sleeping accommodations.

Standard Features

Interior

THROUGHOUT

- **84" Interior Ceiling Height**
- **Deluxe Roller Bearing, Full Extension Drawer Guides**
- **Dual Roof-Mounted A/C: High Efficiency w/Solar Panel & Chill Grille on Front A/C**
- **Whole Coach Water Filtration System**

DRIVER CONVENIENCE

- **Driver/Front Passenger Ultraleather™ Captain's Chairs w/Reclining Back/Slide Controls w/Power Driver Seat**
- **Driver Side Manual Pull Down Shade**
- **High-Output Auto A/C Heater Combo**
- **Power Driver/Front Passenger**

LIVING ROOM

- **DVD Home Theater Sound System w/Hidden Surround-Sound Speakers**
- **27" Stereo TV in Overhead**

GALLEY

- **Six-Person Pull-Out Dinette Table (Select Models)**
- **Solid Surface Countertop, Sink & Range Covers**
- **1.4 cu. ft. Convection Microwave Oven**
- **3-Burner, High-Output Cooktop w/Sealed Burners**
- **Adjustable Cabinet Shelves**

BEDROOM

- **Remote Generator Start**
- **Restonic® Deluxe Pillow Top Innerspring Mattress**
- **Ventilated Rear Wardrobe w/Cedar Lining, Carpeted Floor & Wire Organizer**

BATHROOM

- **Cabinet Toe Kicks**
- **A/C Venting**
- **Coordinated Bath Accessories**
- **Fan-Tastic® Power Roof Vent**

SAFETY / CONVENIENCE

- **Carbon Monoxide Detector/Alarm**
- **Fire Extinguisher**

- **10-Gallon Quick-Recovery Water Heater w/Direct Spark Ignition (Gas/Electric)**
- **20,000/ 25,000 BTU Dual Furnace**
- **20,000/ 30,000 BTU Dual Furnace (39V)**
- **Crown Molding**
- **Demand Water Pump w/Filter**

Sun Visors

- **Restyled Soft-Surface Automotive Dash w/Area for Laptop GPS (Laptop & GPS Not Included)**
- **Adjustable 3-Point Seat Belts at Driver & Front Passenger Seats**
- **AM/FM Radio w/CD/Cassette Player**
- **Auxiliary Start Circuit**
- **Battery Shut-Off Switch**

- **Flexsteel® Residential Seat Styling**
- **Hi-Fi VCR**
- **J-Lounge Sofa (Some Models)**
- **Satellite Ready**

(Select Cabinets)

- **Coffee Maker**
- **Fan-Tastic® Power Roof Vent**
- **Hardwood Cabinet Doors**
- **Light/Power Range Hood**
- **Norcold® 4-Door Refrigerator w/Ice Maker and Water Dispenser**
- **Roll-Out Countertop (39L)**
- **Single-Lever Galley Faucet**

- **20" TV w/Swivel**

- **Bedroom Radio & Speakers**
- **Bedroom Slide-Out Features Overhead Cabinet**
- **Bedroom Vanity w/Second Sink (Some Models)**

w/Wall Switch

- **Glass Shower w/Skylight and Low Threshold**
- **Hardwood Bath Door/Trims**

- **Lighted Entry-Assist Handles**
- **Propane Detector/Alarm**

- **Laminate Floor Tile**
- **Plush Wall-to-Wall Carpet w/Pad**
- **Wall Sconces**
- **Wall-Switches (Includes Switches for Ceiling Lights & Vents)**
- **Water Heater Bypass**
- **Wood-Finish Air Intake for Furnace**

- **CB Radio Ready**
- **Cruise Control**
- **Passenger Armrest w/Integrated Magazine Rack**
- **Radio Switch—Main/Auxiliary Power**
- **Snack Tray/Service Door at Dash**
- **Tilt/Telescoping Steering Wheel**

- **Telephone Jack**
- **TV Antenna**

- **w/Pullout Sprayer**
- **Slide-Out Dinette Bins w/Latches (Select Models)**
- **Soap Dispenser**
- **Under-Galley Shelving & Wastebasket**
- **Window Over Sink**
- **Wood-Trim Dinette Tabletop (Select Models)**

- **Bedsprad w/Decor Pillows**
- **Coffer Ceiling**
- **Day/Night Pleated Shades**
- **Second Phone Jack**
- **Wardrobe Lighting**

- **Hardwood Cabinet Doors/Drawers**
- **Lighted Assist Handle**
- **Make-Up Lights (Some Models)**
- **Porcelain Toilet w/Water Saver**

- **Smoke Detector/Alarm**

Fleetwood Advantages

- **Complete TuffPEX® Plumbing System**
- **Energy Management System (EMS) w/Soft Start**

- **Full Wall Slide (Patent Pending)***
- **Power Platform Construction***
- **Vacu-Bond® Upper/Lower Floors**

- **Vacu-Bond® Walls w/Smooth High-Gloss Exterior Tuff-Coat® Fiberglass**

Exterior

THROUGHOUT

- **4-Point Automatic Hydraulic Levelers**
- **Choice of Four Colorway Graphics**
- **Full Body Paint**
- **Weather Pro Power Awnings (Patio Awning Includes Wind Sensor)**

AUTOMOTIVE

- **330-HP Caterpillar® C7 Engine w/Rear-Mounted Radiator**
- **Dual Fuel Fill (One on Each Side)**
- **Freightliner® Chassis**
- **10,000-Lb. Weight-Distributing Hitch Receiver w/7-Point Electrical Hook-Up†**

SAFETY / CONVENIENCE

- **Easy-Sweep Laminate Tile Flooring at Entry Step**
- **Lighted Exterior Entry-Assist Handle**
- **20' Sewer Hose**

STORAGE

- **EZ Store Compartments on Slide-Outs**
- **Continuous One-Piece Compartment Bulb Seal**
- **Gas-Lift Strut Supports**

BODY STRUCTURE

- **Aluminum Interlocking Floor/Wall/Ceiling Framing**
- **Color-Coordinated Royal Tuff-Ply Roof**

- **120V/12V AC/DC Converter**
- **120V/12V Wire Raceways**
- **2000-Watt Inverter w/Remote**
- **50-Amp Service**
- **7.5KW Onan® Quiet Diesel Generator**
- **Awning Rail/Drip Molding (Both Sides)**
- **Doorside Patio Receptacle**

- **Aluminum Wheels**
- **Fog Lamps**
- **Mud Flaps**
- **Rear-Vision Camera**
- **Single Motor Denso® Windshield Wipers w/Wet Arm**
- **Underhood Utility Light**

- **Entry Door w/Screen Door & Deadbolt Lock**
- **Four 6V/Deep-Cycle House Batteries**
- **Power Entry Step**
- **Remote Heated Rear-View Mirrors**

- **Insulated Aluminum Luggage Doors w/Single Paddle Metal Latches & Stainless-Steel Hinges**
- **Large Compartment Doors at EZ Store**

- **Heated Water & Holding Tank Compartments**
- **Radius Roof w/Ducted A/C**

- **Dual Pane Windows w/Screens**
- **Fiberglass Front Quarter Panels**
- **Fiberglass Front/Rear Caps w/High-Mounted Taillights**
- **Fiberglass Wheel Well Trims**
- **Two-Stage Luggage Door Struts**
- **Water Pump Switch (Multiple Locations)**

† The chassis manufacturer recommends the installation of a supplemental brake control system to activate the brakes on the vehicle or trailer you are towing. Hitch receiver ratings expressed are maximum for the hitch receiver installed and may require the purchase of additional equipment that is dependant on the weight of the towed load. Consult with hitch receiver manufacturer for further information.

- **Toilet Tank San-T-Flush™ System**
- **Utility Compartment w/Exterior Shower**

- **Lighted Luggage Compartments**
- **Rotomolded Polyethylene Luggage Compartments**
- **Spare Tire Compartment (N/A 39V) (Spare Tire Not Included)**

Options

THROUGHOUT (EXTERIOR)

- **CSA Electrical Package**
- **DSS Auto-Locating Satellite Dish (Covered)**
- **Exterior Entertainment Center**
- **Exterior Pull-Out Grill & Kitchenette**
- **Heat Pumps**

BEDROOM

- **Bedroom Entertainment Center (39L)**
- **Bedroom Vanity w/Sink (N/A on 39L)**
- **Desk**

THROUGHOUT (INTERIOR)

- **Central Vacuum System**
- **Washer/Dryer**
- **Water Heater 16 Gallon Output**

LIVING ROOM

- **Computer Workstation at Dinette**
- **Dual Free-Standing Ultraleather™ Recliners**
- **Free-Standing Dinette w/Chairs**
- **Free-Standing Dinette w/Credenza**
- **Free-Standing Ultraleather™ Swivel Recliner (39L)**
- **Recliner w/Table (39L)**
- **Ultraleather™ J-Lounge Sofa (N/A on 39L)**
- **Ultraleather™ Love Seat (39L)**
- **Ultraleather™ Sofa Bed**
- **Ultraleather™ Sofa Sleeper w/Air Mattress**

GALLEY

- **3-Burner Sealed Drop-In Range w/Oven**
- **14 cu. ft. Dometic® Frost-Free Refrigerator**

DRIVER CONVENIENCE

- **Automatic Generator Start Switch**
- **Stereo AM/FM w/6-Disc CD Player with Sirius® Satellite Radio (w/6 Month Subscription)**
- **Ultraleather™ Passenger Seat w/Power Foot Rest**

AUTOMOTIVE

- **Chrome Exterior Mirrors**
- **Front Protective Mask**
- **Remote Keyless Entry**
- **Spotlight w/Remote Control**

Bold Denotes Fleetwood's Key Features

** Denotes Fleetwood Exclusives*

Weights and Measurements

| FREIGHTLINER® CHASSIS | 35H | 39C | 39J | 39L | 39S | 39V |
|--|--------|--------|--------|--------|--------|--------|
| Engine Displacement (Liters) | 7.2 | 7.2 | 7.2 | 7.2 | 7.2 | 7.2 |
| Wheelbase (Inches) | 208 | 208 | 252 | 252 | 252 | 252 |
| GVWR (lbs) ¹ | 31,000 | 31,000 | 31,000 | 31,000 | 31,000 | 31,000 |
| Front GAWR (lbs) ² | 12,000 | 12,000 | 12,000 | 12,000 | 12,000 | 12,000 |
| Rear GAWR (lbs) ² | 19,000 | 19,000 | 19,000 | 19,000 | 19,000 | 19,000 |
| Base Weight (lbs) ³ | 21,655 | 22,605 | 22,605 | 22,900 | 22,605 | 22,900 |
| GCWR (lbs) ⁴ | 41,000 | 41,000 | 41,000 | 41,000 | 41,000 | 41,000 |
| Hitch Rating Weight (lbs) [†] | 10,000 | 10,000 | 10,000 | 10,000 | 10,000 | 10,000 |
| Tongue Weight (lbs) [†] | 1,000 | 1,000 | 1,000 | 1,000 | 1,000 | 1,000 |
| Fuel Capacity (gal) | 90 | 90 | 90 | 90 | 90 | 90 |

DIMENSIONS AND CAPACITIES

| | | | | | | |
|--|--------|--------|--------|--------|--------|--------|
| Overall Length ⁵ | 35' 4" | 39' 0" | 39' 0" | 39' 0" | 39' 0" | 39' 0" |
| Overall Height (with A/C) | 12' 8" | 12' 8" | 12' 8" | 12' 8" | 12' 8" | 12' 8" |
| Overall Width (maximum) ^{6,7} | 102" | 102" | 102" | 102" | 102" | 102" |
| Interior Height (maximum) | 84" | 84" | 84" | 84" | 84" | 84" |
| Interior Width (maximum) | 96" | 96" | 96" | 96" | 96" | 96" |
| Fresh Water Holding Tank (gal) | 86 | 84 | 86 | 86 | 86 | 86 |
| Grey Water Holding Tank (gal) | 50 | 50 | 50 | 50 | 50 | 50 |
| Black Water Holding Tank (gal) | 50 | 50 | 50 | 50 | 50 | 50 |
| Appliance Propane Tank (gal) (WC) ⁸ | 38 | 38 | 38 | 38 | 37 | 37 |
| Water Heater Tank (gal) | 10 | 10 | 10 | 10 | 10 | 10 |

Liquid Weight Reference: Water (gal) = (8.3 lbs/3.8 kgs) Fuel (gal) = (7.1 lbs/3.2 kgs) Propane (gal) = (4.2 lbs/1.9 kgs)

Metric Conversion: Multiply pounds x 0.453 to obtain kilograms. Multiply gallons x 3.785 to obtain liters.

CHASSIS

| | |
|---------------------------------------|---|
| Frame: Freightliner® XC-Series | Transmission: Allison® 3000 MH, 6-Speed w/Electronic Shifter |
| Engine: Cat® C7 330 HP | Alternator Amps: 160-Amp Delco |
| Torque: 860 lb-ft @ 1440 RPM | Tires: Goodyear® 275/70R 22.5H |

1. GVWR (Gross Vehicle Weight Rating) is the maximum permissible weight of this fully loaded motor home. The GVWR is equal to or greater than the sum of the unloaded vehicle weight plus the cargo carrying capacity.

2. GAWR (Gross Axle Weight Rating) is the maximum permissible loaded weight a specific axle is designed to carry.

3. Base Weight is the estimated weight of the motor home without fuel, options, water, cargo or passengers.

4. GCWR (Gross Combined Weight Rating) is the value specified by the motor home manufacturer as the maximum allowable loaded weight of this motor home with its towed vehicle. Towing and braking capacities may be different. Refer to Fleetwood and chassis manufacturer's manuals for complete information.

5. Length taken from front bumper to rear bumper (excludes accessories).

6. Excludes safety equipment and awnings.

7. Motor homes feature a body-width over 96" which will restrict your access to certain roads. Before purchasing, you should research any state and/or province road laws which may affect your usage.

8. Tank manufacturer's listed water capacity (WC). Actual propane capacity is 80% of water listing as required by the safety code.

† The chassis manufacturer recommends the installation of a supplemental brake control system to activate the brakes on the vehicle or trailer you are towing. Hitch receiver ratings expressed are maximum for the hitch receiver installed and may require the purchase of additional equipment that is dependant on the weight of the towed load. Consult with hitch receiver manufacturer for further information.

IMPORTANT — PLEASE READ: Product information, photography and illustrations included in this publication were as accurate as possible at the time of printing. For further product information and changes, please visit our website at www.fleetwoodrv.com or contact your local Fleetwood dealer. Prices, materials, design and specifications are subject to change without notice. All weights, fuel, liquid capacities and dimensions are approximate. Fleetwood has designed its recreational vehicles to provide a variety of uses for its customers. Each vehicle features optimal seating, sleeping, storage and fluid capacities. The user is responsible for selecting the proper combination of loads (i.e. occupants, equipment, fluids, cargo, etc.) to ensure that the vehicle's capacities are not exceeded.

What Drives You?

Maybe it's feeling like you're the only one on Earth. Perhaps it's the unique sense of closeness with the great outdoors. Or, it might be the joy that comes from spending quality time with family and friends. Whatever the reason, we know that you have a strong drive to experience everything that comes with spending time on the road. And for more than 50 years, we've shared that passion with you. Because we're RV enthusiasts ourselves, you can see our passion in the vehicles we design and build. Own a Fleetwood, and you'll feel like you're not just traveling, but embarking on an experience unlike any other. Set your own course for adventure and get out there and explore the world around you. Once you do, you'll see what it is that drives us — it's you.



RV OWNERCARE* is a limited one-year/15,000-mile coach warranty and three-year/50,000-mile structural warranty, whichever occurs first, and it is fully transferable for the first 12 months. RV OWNERCARE is one of the RV industry's most comprehensive programs and includes systems, appliances, components and construction, with no deductible and no service charge. RV OWNERCARE coverage is provided from a company that will be around in the future to service your needs. See your nearest Fleetwood dealer for a full explanation of benefits and restrictions.

FLEETWOOD TRAVELCADE CLUB As a Fleetwood owner, you're eligible to become a member of our owners' group, Fleetwood Travelcade Club. It's a perfect way to meet other Fleetwood owners who love to travel across America and share in the RV lifestyle. Call (877) 577-2560 or visit www.fleetwood.com/clubs to learn more and join the fun! For Discovery specific club information contact: Discovery Owners Association, Inc., www.discoveryowners.com, (888) 594-6818 or Discovery International Chapter of FMCA www.difmca.com.

FLEETWOODRV.COM To locate a dealer near you, visit our website or call 1-800-444-4905. We can also be contacted at Fleetwood Customer Relations, P.O. Box 7638, Riverside, CA 92513-7638.

IMPORTANT—PLEASE READ Product information, photography and illustrations included in this publication were as accurate as possible at the time of printing. For further product information and changes, please visit our website at www.fleetwoodrv.com or contact your local Fleetwood dealer. Prices, materials, design and specifications are subject to change without notice. All weights, fuel, liquid capacities and dimensions are approximate. Fleetwood has designed its recreational vehicles to provide a variety of uses for customers. Each vehicle features optimal seating, sleeping, storage and fluid capacities. The user is responsible for selecting the proper combination of loads (i.e.: occupants, equipment, fluids, cargo, etc.) to ensure that the vehicle's capacities are not exceeded.

Your local Fleetwood dealer is:



www.fleetwoodrv.com

*For complete info see your Fleetwood dealer. ©2005. Fleetwood Enterprises, Inc. Printed in the USA. Inventory control number D106F2 10/05.

