

# FOUR WINDS®



STANDARD GRAPHICS



COSMOPOLITAN **HD**



VANILLA SWIRL **HD**



CASTLE ROCK  
FULL BODY PAINT(31Z, 31W & 31Y)



WHISTLING STRAITS  
FULL-BODY PAINT (31E, 31W & 31Y)

SPRINTERS



COSMOPOLITAN **HD**



VANILLA SWIRL **HD**



CASTLE ROCK  
FULL-BODY PAINT



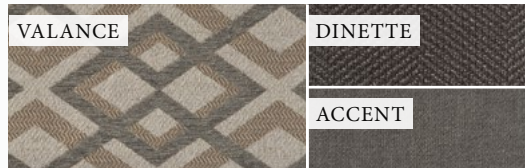
WHISTLING STRAITS  
FULL-BODY PAINT



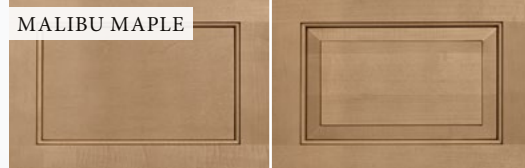
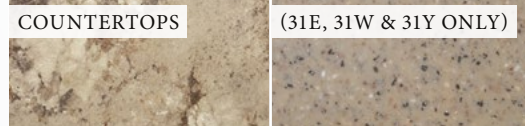
GEMSTONE



LAGUNA SLATE

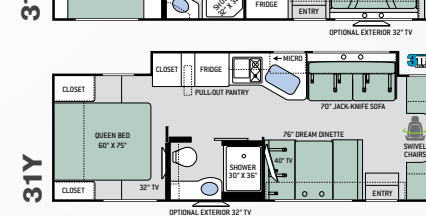
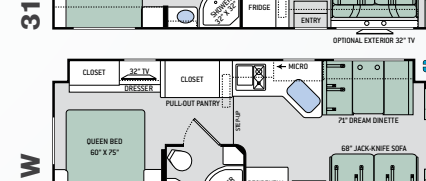
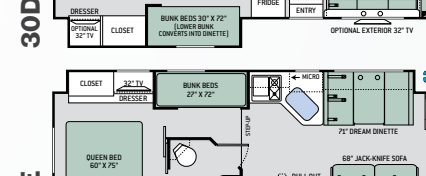
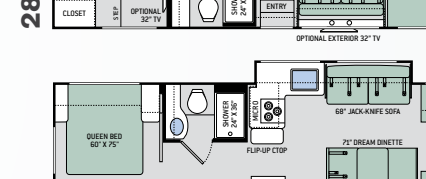
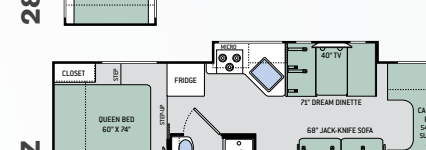
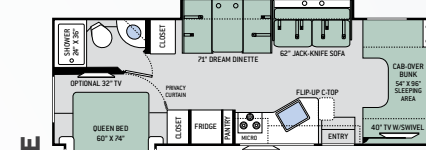
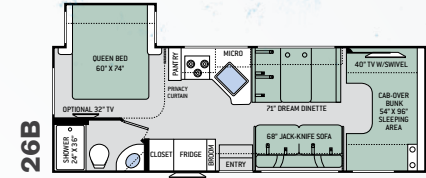
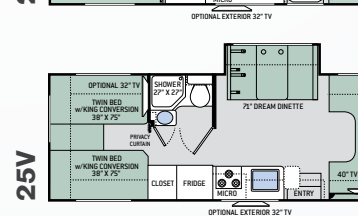
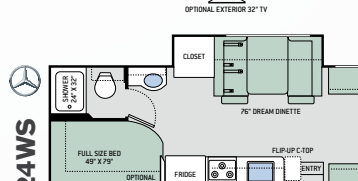
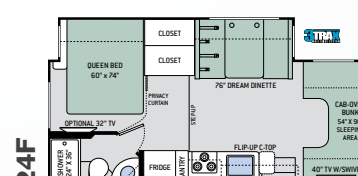
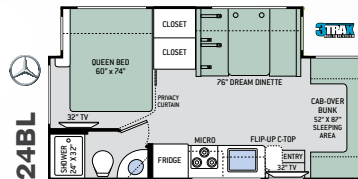
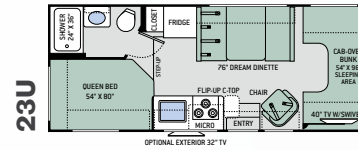
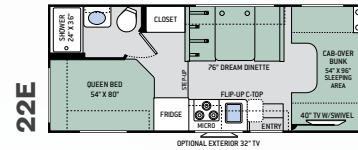
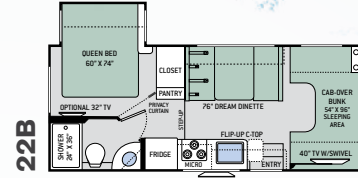


SUMMIT GREY



FLAT PANEL

RAISED PANEL  
(31E, 31W, & 31Y)



# Class C Featured Highlights

## CONSTRUCTION & EXTERIOR

- Slick Fiberglass Exterior with Standard Graphics Package (N/A 31E, 31Y & 31W)
- MEGA-Storage™ Compartment (22B, 22E, 23U, 25V, 28E, 28Z, 30D & 31Y)
- Portable Folding Table (23U, 28Z & 31Y)
- Framed Windows (N/A 31E, 31Y & 31W)

## CONSTRUCTION & EXTERIOR OPTIONS

- Electric Stabilizing System (STD 24F - OPT 22B, 22E, 23U, 25V, 26B, 28E, 30D & 28Z)
- Automatic Leveling Jacks (STD 31E & 31W / OPT 31Y)
- HD-MAX® Exterior with Graphics Package (STD 31E, 31W & 31Y)
- Full Body Paint Package with Gel-Coated Sidewalls & Protective Mask (31E, 31W & 31Y)
- Exterior 32" LED TV on Manual Swivel with Bluetooth Sound Bar & Radio

## AUTOMOTIVE & COCKPIT

- Touchscreen Dash Radio & Back-Up Monitor with Integrated Camera
- Deluxe Exterior Mirrors
- Swivel Captain's Chairs with Filler Cushions (31Y)

## AUTOMOTIVE & COCKPIT OPTIONS

- Heated/Remote Exterior Mirrors with Integrated Side View Cameras (STD 31E, 31Y & 31W)
- Leatherette Captain's Chairs
- Power Driver's Seat (28E, 28Z, 30D, 31E & 31W)
- Wood Dash Appliqué
- Cockpit Carpet Mat
- Keyless Entry & Valve Stem Extenders (STD 31E, 31Y & 31W)
- Stainless Steel Wheel Liners (STD 31E, 31Y & 31W)

## INTERIOR

- Fabric Jack-Knife Sofa (26B, 28E & 28Z)
- Fabric Dream Dinette® Booth
- 40" LED TV in Living Area with Blu-Ray Player
- Denver Mattress® Queen Size Bed (N/A 25V)
- Two (2) Twin Beds with Upholstered Covers & King Conversion (25V)
- Bunk Beds (30D & 31E)
- Bedroom USB Power Charging Center for Electronics & 12-volt Outlet for CPAP Machine
- Shower with Curtain (22E, 22B & 25V)
- Shower with Anti-Bacterial Curtain (23U, 24F, 26B, 28E, 28Z & 30D)
- Shower with Glass Door (31E, 31W & 31Y)
- Double Door Refrigerator (N/A 31W)
- 16 cu. ft. Residential Refrigerator w/Ice Maker (31W)
- Recessed 3-Burner Gas Cooktop w/ Glass Cover (N/A 31E, 31Y & 31W)
- Microwave Oven (N/A 31E, 31Y & 31W)
- Flip-Up Countertop Extension (22E, 22B, 23U 24F, 25V, 28E & 30D)
- Pop-Up Countertop Outlet & Charging Center for Electronics (28E, 28Z, 30D, 31E, 31W & 31Y)
- Pantry (22B, 24F, 26B, 28E, 31E, 31W & 31Y)

## INTERIOR OPTIONS

- Leatherette Jack-Knife Sofa (26B, 28E, 28Z, 30D, STD - 31E, 31Y & 31W)
- Leatherette Dream Dinette® Booth
- 32" TV in Bedroom (N/A 22E & 23U / STD 31E, 31Y & 31W)
- Two (2) 15.5" TV's & DVD Player in Bunk Bed Area (STD 31E)
- Cab-Over Child Safety Net
- Single Child Safety Tether in Dinette
- 12-volt Attic Fan w/Cover in Cab-Over Bunk
- 12-volt Attic Fan in Bedroom

- Recessed 3-Burner Gas Cooktop/Oven with Glass Cover (N/A 31E, 31Y & 31W)
- Convection Microwave Oven (N/A 31E, 31Y & 31W)

## ELECTRICAL & PLUMBING

- Onan® RV QG 4000 Gas Generator
- Automatic Generator Start (31W)
- 1800-watt Inverter (31W)
- Battery Tray for Four (4) Batteries (31E, 31Y & 31W)
- Exterior LP Connection (28E, 28Z, 30D, 31E, 31W & 31Y)
- Solar Charge Controller - Solar Panel Ready
- 6-gallon DSI Gas/Electric Water Heater with Bypass System (N/A 31E, 31W & 31Y)
- Black Tank Flush System
- Rapid Camp® Wireless Control System (31E, 31Y & 31W)

## ELECTRICAL & PLUMBING OPTIONS

- 15,000 IPO 13,000 BTU Roof Front Air Conditioner
- Holding Tanks with Heat Pads (STD 31E, 31Y & 31W)
- Outside Shower (STD 31E, 31Y & 31W)
- Second Auxiliary House Battery (STD 31W)

## PREMIER PACKAGE – 31E, 31Y & 31W

- 2-Burner Gas Cooktop with Single Induction Cooktop
- 30" Over-the-Range Convection Oven
- Solid Surface Kitchen Countertop
- Shower with Glass Door
- Premium Window Privacy Roller Shades
- Whole Coach Water Filtration System
- Enclosed Sewer Area for Sewer Tank Valves
- Tankless Water Heater
- Frameless Windows



# Sprinter Featured Highlights

## CONSTRUCTION & EXTERIOR

- HD-MAX® Exterior with Graphics Package
- MEGA-Storage™ Compartment (24BL)
- Lighted Rotocast Storage Compartments
- Flush Mount Radius Compartment Doors
- Electric Entry Step

## CONSTRUCTION & EXTERIOR OPTIONS

- Full Body Paint Package with Gel-Coated Sidewalls & Protective Mask
- Exterior 32" LED TV on Manual Swivel with Bluetooth Sound Bar & Radio

## AUTOMOTIVE & COCKPIT

- Touchscreen Dash Radio & Back-Up Monitor with Integrated Camera
- Deluxe Heated/Remote Exterior Mirrors
- Tilt Leather Steering Wheel with Audio Buttons to Control Dash Radio
- Leatherette Swivel Captain's Chairs
- Keyless Entry System
- Stainless Steel Wheel Liners
- Valve Stem Extensions on All Wheels

## AUTOMOTIVE & COCKPIT OPTION

- Cockpit Carpet Mat

## INTERIOR

- 32" TV on Manual Swivel in Living Area
- Blu-Ray Player in Living Area
- Fabric Dinette Booth
- Leatherette Jack-Knife Sofa with Removable Pedestal Table
- Double Door Refrigerator
- Recessed 3-Burner Gas Cooktop with Glass Cover
- Convection Microwave Oven
- Flip-Up Countertop Extension

- 12-volt Ceiling Vent in Kitchen
- Window Privacy Roller Shades
- Shower with Anti-Bacterial Curtain
- Bedroom Power Charging Station and Dedicated CPAP Machine Outlet with Storage Location

## INTERIOR OPTIONS

- 28" TV in Bedroom (24WS)
- 32" TV in Bedroom (24BL)
- Leatherette Dinette Booth
- Single Child Safety Tether in Dinette
- Cab-Over Safety Child Net
- 12-volt Attic Fan with Cover in Cab-Over
- 12-volt Attic Fan with Cover in Bedroom

## ELECTRICAL & PLUMBING

- Onan® RV QG 3600 LP Generator
- 30-amp Shoreline Power Cord
- Automatic Shoreline-to-Generator Transfer Switch
- Battery Disconnect Switch
- 13,500 BTU Front Air Conditioner
- Solar Charge Controller - Solar Panel Ready
- Exterior LP Connection
- Tankless Water Heater
- Black Tank Flush System
- Outside Shower
- Systems Control Center

## ELECTRICAL & PLUMBING OPTIONS

- Onan® RV QD 3200 Diesel Generator
- Second Auxiliary House Battery
- Holding Tanks with Heat Pads

For a complete listing of available features, visit [thormotorcoach.com/fourwinds](http://thormotorcoach.com/fourwinds).

For a complete listing of available features, visit [thormotorcoach.com/fourwinds-sprinter](http://thormotorcoach.com/fourwinds-sprinter).

	CLASS C												SPRINTER	
	22B	22E	23U	24F	25V	26B	28E	28Z	30D	31E	31W	31Y	24BL	24WS
Chassis	Ford / Chevy	Ford / Chevy	Ford / Chevy	Ford / Chevy	Ford / Chevy	Ford / Chevy	Ford	Ford	Ford	Ford	Ford	Ford	Mercedes-Benz	Mercedes-Benz
Gross Vehicle (GVWR)	12,500 / 12,300	12,500 / 12,300	12,500 / 12,300	12,500 / 14,200	12,500 / 14,200	12,500 / 14,200	14,500	14,500	14,500	14,500	14,500	14,500	11,030	11,030
Gross Combined (GCWR)	18,500 / 16,000	18,500 / 16,000	18,500 / 16,000	18,500 / 20,000	18,500 / 20,000	18,500 / 20,000	22,000	22,000	22,000	22,000	22,000	22,000	15,250	15,250
Wheel Base	158" / 159"	158" / 159"	158" / 159"	168" (Ford)	176" / 177"	183" / 184"	200"	212"	223"	223"	223"	212"	170.3"	170.3"
Exterior Length (w/o ladder)	24' / 24'-6"	24' / 24'-6"	24'-10" / 25'-4"	24'-11" / 25'-5"	26'-5" / 26'-11"	27'-6" / 28'	28'-7"	29'-11"	32'-2"	32'-7"	32'-2"	31'-3"	28'-8"	25'-7"
Exterior Height (w/AC)	11'	11'	11'	11'-2"	11'	11'	11'	11'	11'	11'-2"	11'-2"	11'-2"	11'-7"	11'-7"
Exterior Width (w/o mirrors)	99"	99"	99"	99"	90"	99"	99"	99"	99"	99"	99"	99"	90"	90"
Interior Height (living area)	84"	84"	84"	84"	84"	84"	84"	84"	84"	84"	84"	84"	84"	84"
Awning Size	15'	15'	15'	16'	17'-6"	18'	12'	14'	10'-6"	16'	16'	15'	16'	16'
Fuel (gal)	55 / 57	55 / 57	55/57	55 / 57	55 / 57	55 / 57	55	55	55	55	55	55	26.4	26.4
LPG (lbs)	40.9	40.9	40.9	40.9	40.9	40.9	40.9	40.9	40.9	40.9	40.9	40.9	68.2	68.2
Fresh/Waste/Gray Water (gal)	40 / 29 / 25	40 / 24.5 / 37	40 / 24.5 / 38.5	40 / 34.5 / 37	42 / 30 / 33	40 / 29 / 25	40 / 29 / 25	40 / 26 / 32	40 / 26 / 31	40 / 28 / 28	40 / 28 / 28	40 / 28 / 28	30 / 24.5 / 38	30 / 22 / 38
Water Heater (gal)	6	6	6	6	6	6	6	6	6	Tankless	Tankless	Tankless	Tankless	Tankless
Furnace (BTUs)	19,000	19,000	19,000	30,000	30,000	30,000	30,000	30,000	30,000	30,000	30,000	30,000	30,000	30,000
Exterior Storage Capacity (cu. ft.)	30.9	50.3	69.5	40	65	40	27.2	99.9	64.8	56.2	62.9	109.2	48.5	63.7
Hitch Weight Rating (lbs)	8,000	8,000	8,000	8,000	8,000	8,000	8,000	8,000	8,000	8,000	8,000	8,000	5,000	5,000



IMPORTANT-PLEASE READ: This brochure reflects product design, fabrication, material, components and specifications at the date of printing, which date is disclosed below. Please visit us online at [ThorMotorCoach.com](http://ThorMotorCoach.com) or consult with your selling dealership for the latest in standards, options, specification and technical information. Photographs in the brochure may depict optional equipment or may only be available in certain floor plans. Components, appliances and the chassis may have been manufactured in a calendar year before the vehicle's designated model year. All capacities are approximate. The actual length of the vehicle may differ from that indicated in the brochure due to variances in the manufacturing processes and/or installed components. All dry weights are based on standard model features and do not include optional features or equipment. Component part and appliance manufacturers issue limited warranties covering portions of the vehicle not covered under the limited warranty we issue. Copyright Thor Motor Coach, Inc. © MY 04/13/2018

Made to fit.

P.O. Box 1486, Elkhart, IN 46515 Sales Department: 800.860.5658

[thormotorcoach.com](http://thormotorcoach.com)

