

AMERICAN REVOLUTION

CLASS A DIESEL



MODEL YEAR 2020

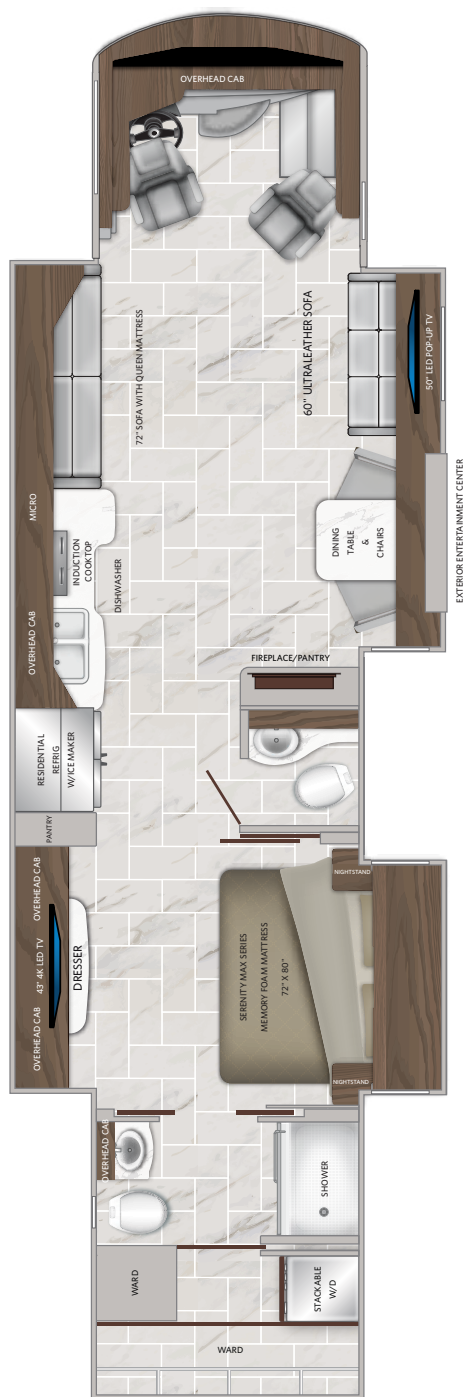


TOP FEATURES

- Exclusive 450HP Liberty/Freightliner Chassis® w/60 Degree Wheel Cut & Independent Front Suspension (IFS)
- UltraSteer® B-Series w/Passive Steer on Tag Axle
- Push Button Start
- Auto Headlights
- LCD Dash Display w/ 10" Monitors
- HWH Floor Slide System and Leveling Jacks
- Power Cockpit Shades & Blinds
- Firefly™ Integrations Electronic Control System w/Multiplex Wiring
- Aqua-Hot® 400D Heating System
- Zone Electric Tile Heated Flooring (2)
- Full Tile Shower
- Roof Mounted Awning
(Second Awning Optional)
- Emergency Exit Door *(Optional)*
- Undercarriage LED Lighting
- Power Generator Slide
- Technology Package
(JBL® Audio Package, Wifi Ranger, Cell Booster, 265W Solar Panel and Mobile Eye)

THE HEART OF LUXURY. THE SOUL OF FREEDOM.

42Q

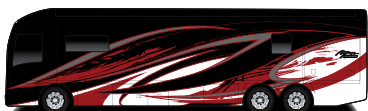


- Three Distinctive Stylized Interior Décor Choices
- Handcrafted Hardwood Cabinetry Available in Three Color Finishes

42V



AMERICAN REVOLUTION EXTERIORS



BLACK STARFIRE



LIQUID SILVER



MYSTIC BLUE



RASPBERRY ICE

Product information, photography and illustrations included in this publication were as accurate as possible at the time of printing. For further product information and changes, please visit our website at www.americancoach.com or contact your local American Coach dealer. Prices, materials, design and specifications are subject to change without notice. All weights, fuel, liquid capacities and dimensions are approximate. American Coach has designed its recreational vehicles to provide a variety of uses for its customers. Each vehicle features optimal seating, sleeping, storage and fluid capacities. The user is responsible for selecting the proper combination of loads (i.e., occupants, equipment, fluids, cargo, etc.) to ensure that the vehicle's capacities are not exceeded.