

STORM 2014

FLEETWOOD RV

STORM[®]



EXPERIENCE THE JOURNEY

Make traveling worthwhile, and do it right in contemporary charm, the Storm is functional, practical, efficient and affordable - It's time to create memories with your loved ones in the Storm.



STORM 32H SHOWN IN PHANTOM NIGHT INTERIOR DÉCOR WITH SPICE WOOD CABINETRY



WHY BUY STORM?

Hide-A-Loft.

Now you see it. Now you don't. The available "Hide-A-Loft" on Storm adds another queen bed in just seconds.

Bunk Bed-N-Breakfast.

During the day this optional feature is a cozy dinette for two. In the evening, it converts to roomy bunk beds for your friends and family. Consider it Fleetwood's spin on a "convertible."

More Bang for Your Buck.

The Storm is so packed with standard features - there's something for everyone - that friends and family will praise your negotiation skills. Your secret is safe with us.

Crossover to Adventure.

Storm features the living space of a Class A with the sleeping capacity of a Class C - a true RV crossover. With Storm, you truly can bring it all with you.



2014 GRAPHICS AND DÉCOR

STORM



Blushing Bronze



Phantom Night



Red Velvet

Both inside and out, we offer a wide selection of colors, styles and finishes. From the moment you lay your eyes on a Fleetwood RV, the high-style graphics and décor collection welcome you with gracious beauty and contemporary design. We've paid attention to every detail. So wherever you are, you'll feel right at home.

	BLUSHING BRONZE	PHANTOM NIGHT	CABINETS
SOFA			CINNABAR
ACCENT			
BEDSPREAD			SPICE
COUNTERTOP			
FLOORING			
CARPET			

STANDARD FEATURES AND OPTIONS

INTERIOR THROUGHOUT

- 12V Water Pump, Demand Operation
- 15,000 BTU Ducted Air Conditioner w/Chill Grille
- 30,000 Btu Furnace, Wall Mounted Thermostat (Except 32H)
- 6 Gallon Propane Water Heater w/Electronic Ignition
- AC/DC Load Center w/12V Converter/Battery Charger
- Auxiliary Batteries w/Disconnect Switch
- Central Monitor Panel Complete PEX Plumbing System
- Deluxe Roller Bearing, Full Extension Drawer Guides & Transit-Ship Locks
- Dual 20,000 Btu Furnaces (32H)
- GFI Circuit Protection
- Hardwood Raised Panel Cabinet Doors
- Hidden Cabinet Door Hinges
- Soft-Touch Vinyl Ceilings
- Ozite Lined Shelves in Overhead Cabinets
- Pleated Night Shades in Living Room & Bedroom
- Quality Constructed Furniture by Flexsteel®
- Water Heater Bypass Valve Fresh Water System Winterization
- Water Pump with On/Off Switches at Galley & Lavy

Optional

- 19" LED TV (Bedroom)
- Bunk Bed-n-Breakfast (32H)
- Bunk Bed-n-Breakfast w/ Dual Pane Windows (32H)
- Dual Flat Panel Video Monitors (32H MODEL BUNKS)
- Hide-A-Loft Queen Bed w/ 29" LED TV
- Satellite Radio

DRIVER CONVENIENCE

- 12V Power Jack
- 3 Point Seat Belts at Driver & Front Passenger Seats
- Auxiliary Emergency Start Assist Switch on Dash
- Cruise Control
- In-Dash AM/FM/Radio w/CD Player
- Power Heated Remote Mirrors
- Radio Switch Main/Auxiliary Power
- Rear Vision Camera
- Soft Touch Flexsteel® Driver/Passenger Captain's Chair w/ Reclining Back/Slide Controls
- Tilt Wheel

LIVING ROOM

- 32" LED Wide-Screen TV w/Remote & DVD Player (39" LED Wide-Screen TV 32V & 33Q)
- Ceiling Lights w/Wall Switches (Entry & Bath)
- Dream Dinette Table w/2 Cup Holders, Convertible for Sleeping
- Soft Touch Sofa Bed (Select Models)

GALLEY

- 3 Burner Range w/High Output/Piezo Igniter & Oven Cooktop Cover
- Dometic® 6 cu. ft. Refrigerator/Freezer
- Laminate Countertops w/ Bull Nose T-Molding Edge
- Microwave Oven w/Electronic Touch Pad
- Power Roof Fan-Tastic® Vent Fan
- Raised Panel Refrigerator Inserts
- Range Hood w/Light & Fan
- Residential Size Double Bowl Sink
- Whole Coach Water Filtration System

BEDROOM

- Bedspread
- Queen Bed w/ Mattress
- Reading Lights in Bed Overhead Cabinet
- Wall Space for TV w/AC Receptacle & Cable Jack (Select Models)

BATHROOM

- Bath Door w/Residential Passage Lock
- China Bowl Toilet w/Hand Sprayer
- Medicine Cabinet w/Wood Construction
- Molded ABS Shower/Tub with Surround
- Residential Style Faucet w/ Large Sink
- Shower Curtain & Rod
- Shower Head w/Flexible Hose Extension
- Skylight/Roof Vent w/12V Fan

SAFETY/CONVENIENCE (INTERIOR)

- 10 lb. ABC Fire Extinguisher
- Carbon Monoxide Detector/Alarm
- Exterior & Interior Entry Assist Handle
- Multiple Seatbelt Locations
- Propane Detector/Alarm
- Smoke Detector/Alarm

EXTERIOR THROUGHOUT

- Debris Awning Above All Slide-Out Rooms
- Dual 6V Deep Cycle Auxiliary Batteries
- High Gloss Smooth Fiberglass Exterior
- Large 1" (Inside Diameter) Water Tank Drain
- Onan® 4.0kW MicroQuiet Generator
- Partial Paint
- Patio Awning
- Power Electric Step
- Sewer Hose Storage in Bumper
- Stainless Steel Wheel Simulators
- Toilet Tank San-T-Flush™ System
- Trailer Hitch w/7 Pin Electrical Hook-Up
- Valve Stem Extenders
- Wash Unit w/Faucet, Flexible Shower Hose

Optional

- Dual Pane Windows
- Exterior Entertainment Center with AM/FM/CD Player, Coax Cable and 120 volt Receptacle
- Hydraulic Leveling Jacks
- Side View Camera Package
- Full Body Paint

SAFETY/CONVENIENCE (EXTERIOR)

- 30 Amp, 30' Power Cord, Compartment Storage
- AC Duplex GFI Receptacle on Patio Side
- Amber Porch Light w/Interior Switch
- Automotive Safety Glass
- Entry Door w/Screen Door & Deadbolt Lock
- High Mounted Large Taillights
- Power Electric Step
- Power/Heated Rear View Mirrors
- Radius Tinted Windows
- Rear Vision Camera

STORAGE

- Molded Cross Link Polyethylene Battery Compartment w/Lid
- Pass Through Storage
- Roto-Molded Polyethylene Luggage Compartments
- "Slam Latch" Luggage Doors

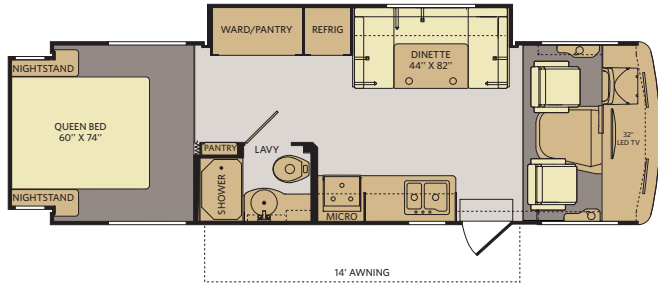
BODY STRUCTURE

- 26" Wide Radius Corner Entry Door w/Obscured Window
- Corrosion Resistant Aluminum Tube Hull Framing
- Full Basement Exterior w/ Enclosed, Heated Holding Tanks & Luggage Compartments
- Molded Fiberglass Front Cap
- Radius Roof with Ducted A/C
- Sidewalls Framed with 1 1/2" Aluminum Tubing
- Vacu-bond® Floor
- Vacu-bond® Hull Lamination Process



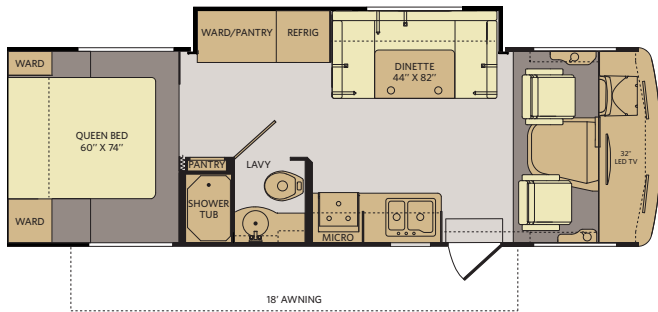
STORM FLOOR PLANS

28F



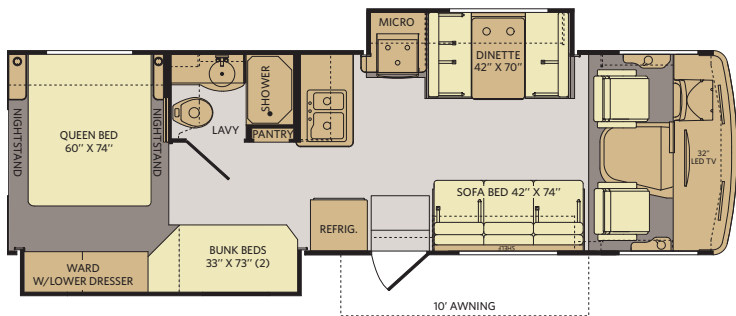
Available options: 084, 218, 351

28MS



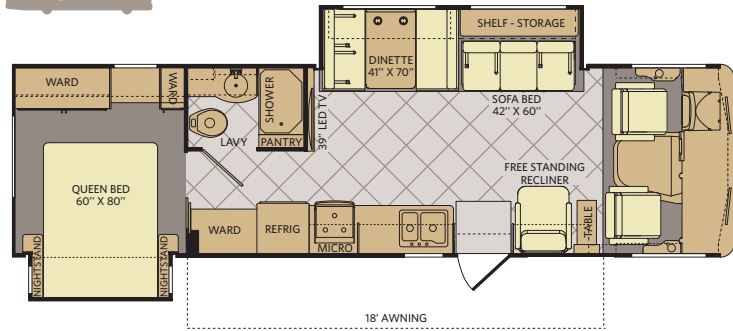
Available options: 084, 218, 351

32H



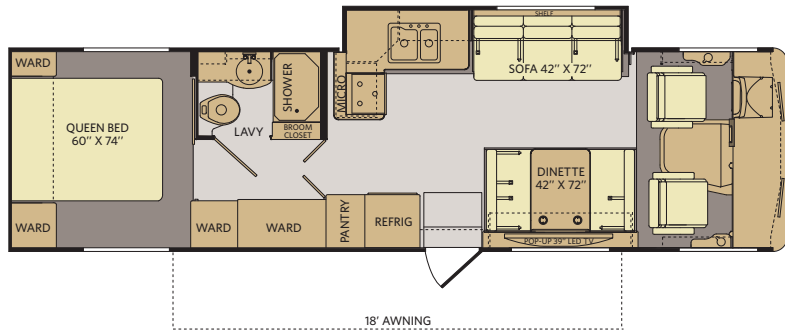
Available options: 084, 097, 157, 218, 351, 860/864

32V



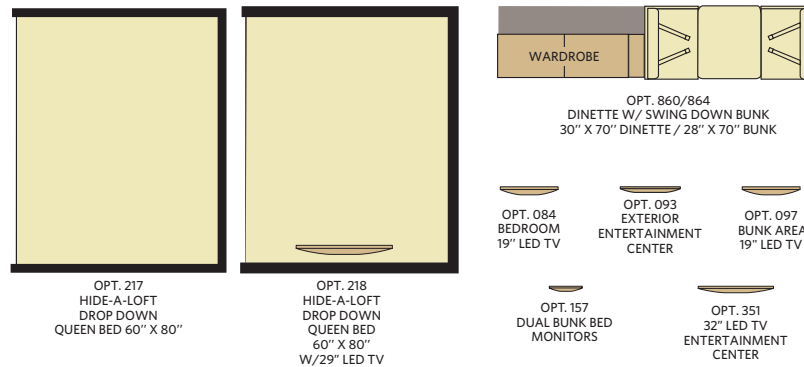
Available options: 084, 217

33Q



Available options: 084, 217

FLOOR PLAN OPTIONS



WEIGHTS & MEASUREMENTS

CHASSIS	FORD®				
	MODELS	28F	28MS	32H	32V
Engine Displacement (liters)	6.8	6.8	6.8	6.8	6.8
Wheelbase (inches)	178"	178"	190"	208"	208"
GVWR (lbs) ¹	18,000	18,000	18,000	18,000	18,000
Front GAWR (lbs) ²	7,000	7,000	7,000	7,000	7,000
Rear GAWR (lbs) ²	12,000	12,000	12,000	12,000	12,000
GCWR (lbs) ³	23,000	23,000	23,000	23,000	23,000
Hitch Rating Weight (lbs) ^{†, ††}	5,000	5,000	5,000	5,000	5,000
Tongue Weight (lbs) [†]	500	500	500	500	500
Fuel Capacity (gal)	80	80	80	80	80

FORD® CHASSIS

Model: Ford®

Engine: 6.8L Triton V10

Transmission: Ford®, 5-Speed, Automatic w/Overdrive

Alternator: 175 Amp

Torque: 457 lb-ft @ 3,250 RPM

Horsepower: 362HP

DIMENSIONS & CAPACITIES

MODELS	28F	28MS	32H	32V	33Q
Overall Length (inches) ⁴	28' 8"	28' 8"	31'	32' 9"	33' 5"
Overall Height (with A/C)	12'	12'	12'	12'	12'
Overall Width (maximum) ^{5, 6}	102"	102"	102"	102"	102"
Interior Height (maximum)	82"	82"	82"	82"	90"
Interior Width (maximum)	96"	96"	96"	96"	96"
Interior Storage (cu. ft.)	110	125	116	128	128
Exterior Storage (cu. ft.)	132	132	104	192	92
Fresh Water Holding Tank (gal)	60	60	60	60	60
Grey Water Holding Tank (gal)	35	35	35	37	37
Black Water Holding Tank (gal)	35	35	35	37	37
Appliance Propane Tank (gal) (WC) ⁷	14	14	14	14	14
Water Heater Tank (gal)	6	6	6	6	6

ADDENDUMS

- GVWR (Gross Vehicle Weight Rating) is the maximum permissible weight of this fully loaded motorhome. The GVWR is equal to or greater than the sum of the (UVW) unloaded vehicle weight plus the (OCCC) occupant cargo-carrying capacity.
- GAWR (Gross Axle Weight Rating) is the maximum permissible loaded weight a specific axle is designed to carry.
- GCWR (Gross Combined Weight Rating) is the value specified by the motorhome manufacturer as the maximum allowable loaded weight of this motorhome with its towed vehicle. Towing and braking capacities may be different. Refer to Fleetwood and chassis manufacturer's manuals for complete information.
- Length measured from front bumper to rear bumper (excludes accessories).
- Excludes safety equipment and awnings.
- Motorhomes feature a body width over 96" which will restrict your access to certain roads. Before purchasing, you should research any state and/or province road laws which may affect your usage.
- Tank manufacturer's listed water capacity (WC). Actual propane capacity is 80% of water listing as required by the safety code.

† The chassis manufacturer recommends the installation of a supplemental brake control system to activate the brakes on the vehicle or trailer you are towing. Hitch receiver ratings expressed are maximum for the hitch receiver installed and may require the purchase of additional equipment that is dependent on the weight of the towed load. Consult with hitch receiver manufacturer for further information.

†† Minimum Towable Load is the available weight, up to GCWR, when the coach is fully loaded to maximum GVWR. However, if the coach is loaded to something less than maximum GVWR, that extra available weight can be added to your Towable Load. For example, if your coach is loaded to 1000lbs less than maximum GVWR, your Towable Load increases accordingly.

* UVW and OCCC are found on the label containing the federal certification tag in each RV.

IMPORTANT—PLEASE READ: Product information, photography and illustrations included in this publication were as accurate as possible at the time of printing. For further product information and changes, please visit our website at www.fleetwoodrv.com or contact your local Fleetwood RV dealer. Prices, materials, design and specifications are subject to change without notice. All weights, fuel, liquid capacities and dimensions are approximate. Fleetwood RV has designed its recreational vehicles to provide a variety of uses for its customers. Each vehicle features optimal seating, sleeping, storage and fluid capacities. The user is responsible for selecting the proper combination of loads (i.e., occupants, equipment, fluids, cargo, etc.) to ensure that the vehicle's capacities are not exceeded.

STORM

WHY FLEETWOOD RV?



Quality

There's no cutting corners. Skilled craftsmen build every Fleetwood RV for maximum durability and longevity.



Trust

More people trust Fleetwood RV. After all, we've spent over 60 years perfecting RVs, earning the loyalty of generations of RVers.



Passion

We're truly passionate about the RV lifestyle. Fleetwood RV was founded by RV enthusiasts, and that tradition continues today.



Safety

You've got precious cargo. So we've engineered dozens of innovative safety features into our motor homes to give you more peace of mind.



Service

Help is nearby with 24/7 emergency Fleetwood RV Trusted Roadside Assistance*. And when you need an upgrade or repair, you'll find Fleetwood RV dealers all across North America ready to assist you.



Warranty

Exclusive RV OwnerCare warranty. See your Fleetwood RV dealer for details.

* All 2014 Fleetwood RV motorhomes include a 1-year emergency roadside assistance membership. For complete info, see your Fleetwood RV dealer.

**For complete info, see your Fleetwood RV dealer.

FLEETWOOD RV



Visit FleetwoodRV.com or find FleetwoodRV Tablet apps in the App Store or Google Play.

RV OWNERCARE**

Limited one-year/15,000-mile coach warranty and three-year/45,000-mile structural warranty, whichever occurs first, and it is fully transferable for the first 12 months. RV OWNERCARE is one of the RV industry's most comprehensive programs and includes systems, appliances, components and construction, with no deductible and no service charge. RV OWNERCARE coverage is provided by a company that will be around in the future to service your needs. See your nearest Fleetwood RV dealer for a full explanation of benefits and restrictions.

CONTACT US

To locate a dealer near you, visit our website at www.fleetwoodrv.com or call 1-800-322-8216. We can also be contacted at Fleetwood RV Customer Relations, P.O. Box 1007, Decatur, IN 46733.

FLEETWOOD MOTORHOME ASSOCIATION

As a Fleetwood RV owner, you're invited to become a member of the Fleetwood Motor Home Association (FMA). Becoming a member is the perfect way to meet other Fleetwood owners who love to travel across American and share in the RV lifestyle. Visit the FMA website at www.fma4fun.org to learn more and join the fun.



YOUR LOCAL FLEETWOOD RV DEALER IS:

©2013. Fleetwood RV, Inc.
Printed in the USA. Inventory Control Number ST14B1, 10/13.
Model Year 2014, First Edition.

STORM[®] 2014

CLASS A GAS | **FLEETWOOD RV**



Blushing Bronze



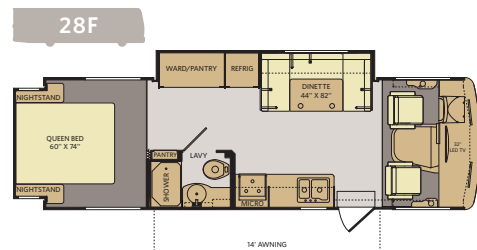
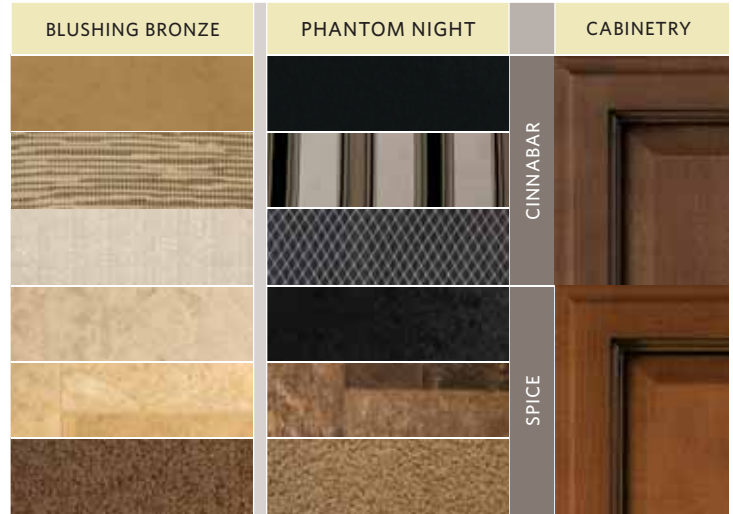
Phantom Night



Red Velvet

TOP FEATURES

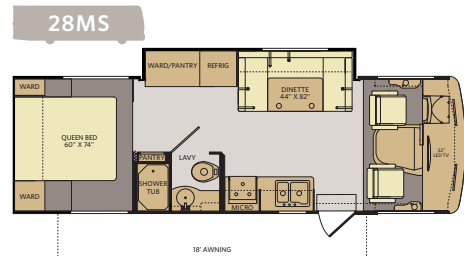
- Ford[®] 18,000lb chassis w/362HP V10
- One-Piece Windshield
- Hardwood Cabinet Doors w/ Hidden Hinges
- LED TVs
- Bunk Bed and Breakfast (32H)
- High-Gloss Exterior Fiberglass
- Hide-A-Loft Drop Down Queen Bed Optional
- Full Basement Storage
- Flexsteel[®] Furniture
- PEX Plumbing System
- Soft-Touch Ceiling
- Exclusive Dream Easy Mattress



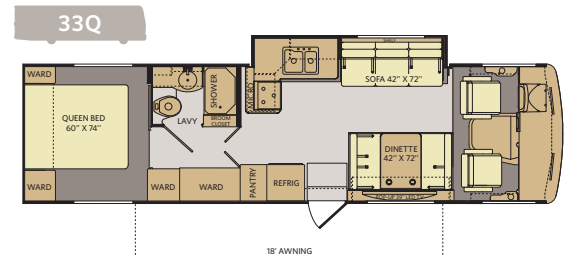
Available options: 084, 218, 351



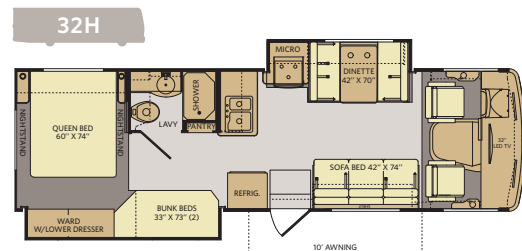
Available options: 084, 217



Available options: 084, 218, 351

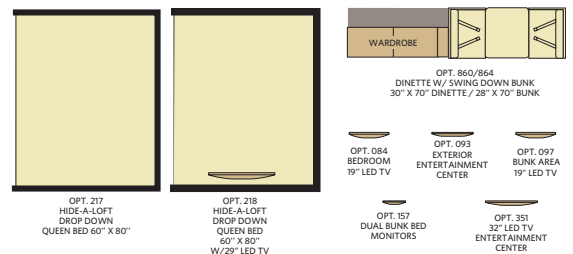


Available options: 084, 217



Available options: 084, 097, 157, 218, 351, 860/864

OPTIONS



WEIGHTS & MEASUREMENTS

CHASSIS MODELS	FORD®				
	28F	28MS	32H	32V	33Q
Engine Displacement (liters)	6.8	6.8	6.8	6.8	6.8
Wheelbase (inches)	178"	178"	190"	208"	208"
GVWR (lbs) ¹	18,000	18,000	18,000	18,000	18,000
Front GAWR (lbs) ²	7,000	7,000	7,000	7,000	7,000
Rear GAWR (lbs) ²	12,000	12,000	12,000	12,000	12,000
GCWR (lbs) ³	23,000	23,000	23,000	23,000	23,000
Hitch Rating Weight (lbs) ^{††}	5,000	5,000	5,000	5,000	5,000
Tongue Weight (lbs) [†]	500	500	500	500	500
Fuel Capacity (gal)	80	80	80	80	80

FORD® CHASSIS

Model: Ford®
Engine: 6.8L Triton V10
Transmission: Ford®, 5-Speed, Automatic w/Overdrive

Alternator: 175 Amp
Torque: 457 lb-ft @ 3,250 RPM
Horsepower: 362HP

DIMENSIONS & CAPACITIES

MODELS	28F	28MS	32H	32V	33Q
Overall Length ⁴	28' 8"	28' 8"	31'	32' 9"	33' 5"
Overall Height (with A/C)	12'	12'	12'	12'	12'
Overall Width (maximum) ^{5,6}	102"	102"	102"	102"	102"
Interior Height (maximum)	82"	82"	82"	82"	90"
Interior Width (maximum)	96"	96"	96"	96"	96"
Interior Storage Capacity CU. FT.	110	125	116	128	128
Exterior Storage Capacity CU. FT.	132	132	104	192	92
Fresh Water Holding Tank (gal)	60	60	60	60	60
Grey Water Holding Tank (gal)	35	35	35	37	37
Black Water Holding Tank (gal)	35	35	35	37	37
Appliance Propane Tank (gal) (WC) ⁷	14	14	14	14	14
Water Heater Tank (gal)	6	6	6	6	6



Visit FleetwoodRV.com or find Fleetwood RV Tablet apps in the App Store or Google Play.

Addendums

- GVWR (Gross Vehicle Weight Rating) is the maximum permissible weight of this fully loaded motorhome. The GVWR is equal to or greater than the sum of the (UVW) unloaded vehicle weight plus the (OCCC) occupant cargo-carrying capacity*.
- GAWR (Gross Axle Weight Rating) is the maximum permissible loaded weight a specific axle is designed to carry.
- GCWR (Gross Combined Weight Rating) is the value specified by the motorhome manufacturer as the maximum allowable loaded weight of this motorhome with its towed vehicle. Towing and braking capacities may be different. Refer to Fleetwood and chassis manufacturer's manuals for complete information.
- Length measured from front bumper to rear bumper (excludes accessories).
- Excludes safety equipment and awnings.
- Motorhomes feature a body width over 96" which will restrict your access to certain roads. Before purchasing, you should research any state and/or province road laws which may affect your usage.
- Tank manufacturer's listed water capacity (WC). Actual propane capacity is 80% of water listing as required by the safety code.

† The chassis manufacturer recommends the installation of a supplemental brake control system to activate the brakes on the vehicle or trailer you are towing. Hitch receiver ratings expressed are maximum for the hitch receiver installed and may require the purchase of additional equipment that is dependent on the weight of the towed load. Consult with hitch receiver manufacturer for further information.

* UVW and OCCC are found on the label containing the federal certification tag in each RV.

†† The Minimum Towable Load of this vehicle is the available weight capacity, up to GCWR, when the coach is fully loaded to maximum GVWR. However, if the coach is loaded to something less than maximum GVWR, that extra available weight capacity can be added to your Towable Load. For example, if your coach is loaded to 1000lbs less than maximum GVWR, your Towable Load increases accordingly. Do not exceed the hitch rating weight, GVWR or GCWR.

IMPORTANT—PLEASE READ

Product information, photography and illustrations included in this publication were as accurate as possible at the time of printing. For further product information and changes, please visit our website at www.fleetwoodrv.com or contact your local Fleetwood RV dealer. Prices, materials, design and specifications are subject to change without notice. All weights, fuel, liquid capacities and dimensions are approximate. Fleetwood RV has designed its recreational vehicles to provide a variety of uses for customers. Each vehicle features optimal seating, sleeping, storage and fluid capacities. The user is responsible for selecting the proper combination of loads (i.e., occupants, equipment, fluids, cargo, etc.) to ensure that the vehicle's capacities are not exceeded.

CONTACT US

To locate a dealer near you, visit our website at www.fleetwoodrv.com or call 1-800-322-8216. We can also be contacted at Fleetwood RV Customer Relations, P.O. Box 1007, Decatur, IN 46733.



** All 2014 Fleetwood RV motorhomes include a 1-year emergency roadside assistance membership. For complete info, see your Fleetwood RV dealer.

©2013 Fleetwood RV Inc. Printed in USA.
 Inventory Control Number ST14F2, 09/13. Model Year 2014, Second Edition.

