

# Flagstaff

V-LITE, CLASSIC SUPER LITE  
TRAVEL TRAILERS & FIFTH WHEELS



V-LITE, CLASSIC SUPER LITE  
TRAVEL TRAILERS & FIFTH WHEELS

Flagstaff



FLAGSTAFF

**V-LITE**

# **AERODYNAMIC PROFILES MAKE ALL THE DIFFERENCE**

The Flagstaff V-Lite uses every possible space for interior room and storage, thanks to its “V” nose design. While the aerodynamic, six-sided vacuum-bonded exteriors can be towed by a wide variety of vehicles on the market, the available standards and options provide extensive customization for each individual consumer.



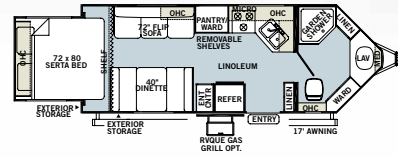
**28WRBS** Chesterfield with Hickory

Spacious Bedroom with Bed Slide

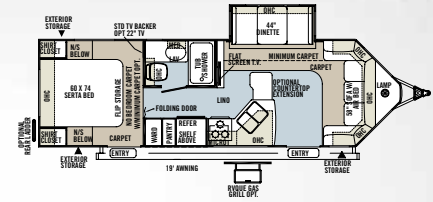
FLAGSTAFF

# V-LITE SERIES

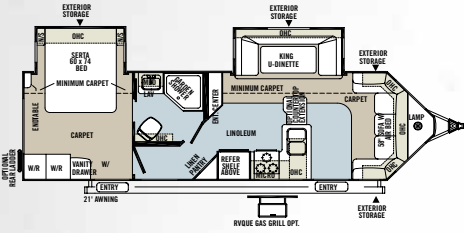
21WRS



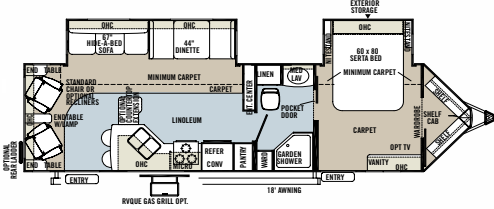
26WRB



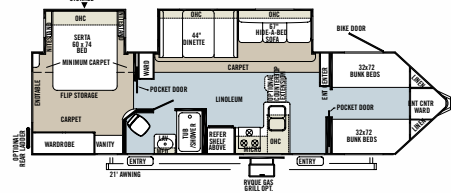
28WRBS



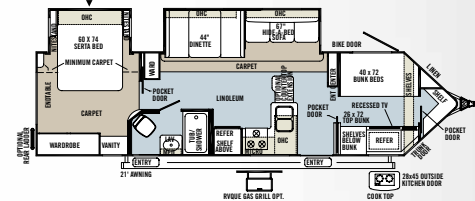
30WRLS



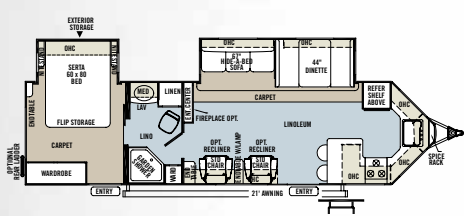
30WTBS



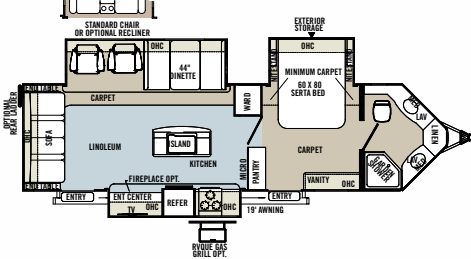
30WTBSK



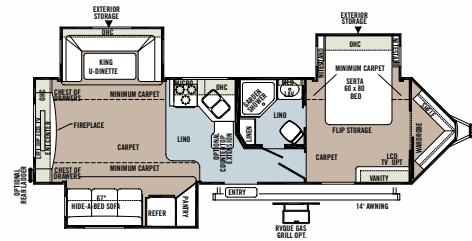
30WFKSS



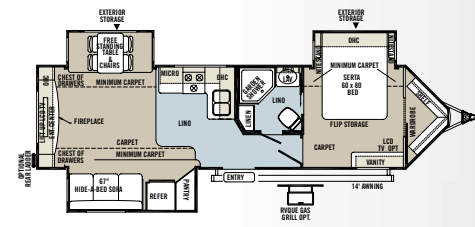
30WIKSS



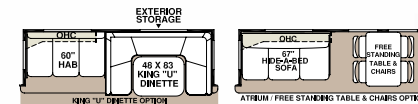
30WRLTS



30WRLTSA



## Slide-Out Options



\*\* Slide options available on Classic/V-Lite super slides only

## SPECIFICATIONS

MODEL	21WRS	26WRB	28WRBS	30WRLS	30WTBS	30WTBSK	30WFKSS	30WIKSS	30WRLTS	30WRLTSA
BASE/DRY UNIT WEIGHT	4991	5674	6084	6801	6902	6948	6950	7440	7132	6998
BASE DRY HITCH WEIGHT	597	624	691	800	808	877	894	1097	909	952
BASE DRY AXLE WEIGHT	4394	5050	5393	6001	6094	6071	6056	6343	6223	6046
CARGO CAPACITY	1559	1476	1766	1749	1648	1602	1700	1510	1518	1652
LENGTH	24' 7"	29' 7"	31' 7"	34' 5"	34' 5"	34' 5"	34' 5"	34' 5"	34' 5"	34' 5"
WIDTH	96"	96"	96"	96"	96"	96"	96"	96"	96"	96"
HEIGHT W/O A/C	121.5"	121.5"	121.5"	121.5"	121.5"	121.5"	121.5"	121.5"	121.5"	121.5"
INTERIOR HEIGHT	80"	80"	80"	80"	80"	80"	80"	80"	80"	80"
FRESH WATER CAPACITY	43 gal	43 gal	43 gal	43 gal	43 gal	43 gal	43 gal	43 gal	43 gal	43 gal
GRAY WATER CAPACITY	38 gal	38 gal	38 gal	38 gal	38 gal	38 gal	76 gal	76 gal	38 gal	38 gal
BLACK WATER CAPACITY	38 gal	38 gal	38 gal	38 gal	38 gal	38 gal	38 gal	38 gal	38 gal	38 gal

Model number of any particular unit does not necessarily reflect the overall length of the unit itself. Dry weight are estimates.



FLAGSTAFF OPTIONAL

# DIAMOND PACKAGE

INCLUDES ALL INTERIOR FEATURES  
IN THE PLATINUM PACKAGE.



Tan High Gloss Fiberglass with Black Accents (Diamond Package only)

## THE UPGRADE PACKAGE YOU WANT ON ANY MODEL YOU CHOOSE.

Always striving to make the best even better, Flagstaff has assembled a collection of upscale features and amenities designed to bring distinctive styling and added luxury to the Classic Super Lite series of travel trailers and fifth wheels. As well as, to the aerodynamic V-Lite series of travel trailers.

Complete details of the Diamond Package contents can be found in the Standards and Options section.



Shielded Awning Covers (Diamond Package only)



Tinted Bonded Frameless Windows with Tan Fiberglass  
(Diamond package only)

EVER HEARD, "YOU CAN'T HAVE IT BOTH WAYS?" WELL NOW YOU CAN.

# WELCOME TO THE PLATINUM PACKAGE

NOW YOU CAN HAVE ALL THE RICH INTERIOR APPOINTMENTS OF THE DIAMOND PACKAGE WITH THE TRADITIONAL WHITE FIBERGLASS EXTERIOR YOU'VE ALWAYS LOVED.



Shown Above: "Tufted" Hide-A-Bed Sofa Upgrade (with Oasis/Hickory Decor).  
Deluxe Interior Window Treatment. Upgrade Decorative Slide out Fascia.  
(Diamond and Platinum Packages)



Now the rich Diamond Package interior features are available with a traditional exterior. This optional Platinum Package also includes the exclusive tinted bonded frameless windows with the white fiberglass you've always loved. Complete details of the Platinum Package contents can be found in the Standards and Options section.

Tinted Bonded Frameless Windows with White Fiberglass  
(Platinum Package only)



Upgraded Cabinetry Hardware  
(Diamond and Platinum Packages)



Solid Surface Corian Counter Tops in the Kitchen  
and Living Room (Diamond and Platinum Packages)

FLAGSTAFF CLASSIC SUPER LITE

## TRAVEL TRAILERS

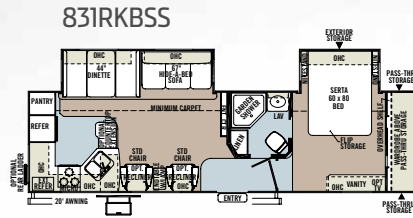
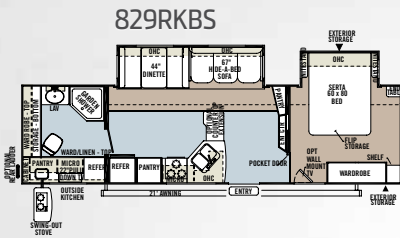
# BEAUTIFUL SPACIOUS INTERIORS MAKE CAMPING WITH A FLAGSTAFF AWESOME.

The Classic series has many outstanding features to enhance your camping experience. The open floorplans and generous storage space allows extra room for those extra things you want to bring along. And sleeping on the comfortable Serta bed, you'll forget you were in the great outdoors. The spacious interior and picturesque view through the many windows enable you to experience your surroundings in the comfort of your Classic travel trailer.

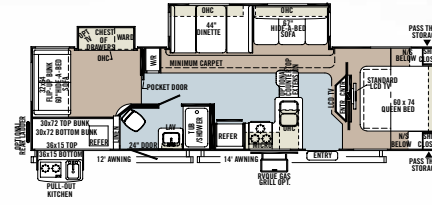


**831FKBSS** Solara with Cherry

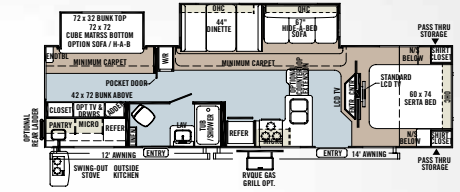
# TRAVEL TRAILERS



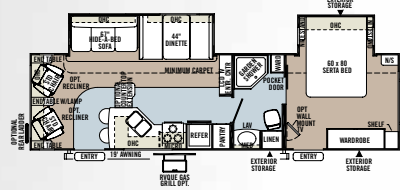
831BHS



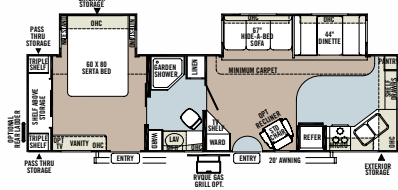
831BHDS



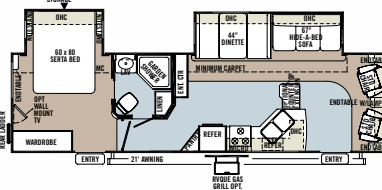
831RLBSS



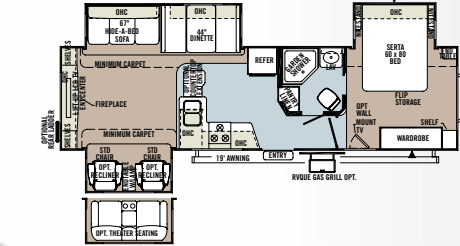
831FKBSS



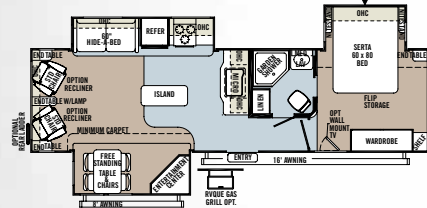
831FLSS



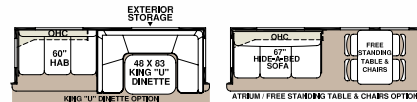
831RESS



832IKBS



## Slide-Out Options



\*\* Slide options available on Classic/V-Lite super slides only



## SPECIFICATIONS

MODEL	829RKBS	831RKBS	831BHS	831BHDS	831RLBSS	831FKBSS	831FLSS	831RESS	832IKBS
BASE/DRY UNIT WEIGHT	6853	6912	6951	6908	6724	6925	6873	6974	7150
BASE DRY HITCH WEIGHT	753	894	786	836	815	945	694	831	883
BASE DRY AXLE WEIGHT	6100	6018	6165	6072	5909	5980	6179	6143	6267
CARGO CAPACITY	1597	1538	1499	1672	1726	1475	1777	1676	1600
LENGTH	34' 9"	34' 9"	34' 9"	34' 9"	34' 9"	34' 9"	34' 9"	34' 9"	34' 9"
WIDTH	96"	96"	96"	96"	96"	96"	96"	96"	96"
HEIGHT W/O A/C	121 1/2"	118"	121 1/2"	121 1/2"	121 1/2"	121 1/2"	121 1/2"	121 1/2"	121 1/2"
INTERIOR HEIGHT	80"	80"	80"	80"	80"	80"	80"	80"	80"
FRESH WATER CAPACITY	43 gal	43 gal	44 gal	43 gal	43 gal	43 gal	43 gal	43 gal	43 gal
GRAY WATER CAPACITY	38 gal	76 gal	38 gal	38 gal	38 gal	76 gal	38 gal	76 gal	38 gal
BLACK WATER CAPACITY	38 gal	38 gal	38 gal	38 gal	38 gal	38 gal	38 gal	38 gal	38 gal



Rear Bedroom with Bed Slide and Large Closet with Lower Pass Thru Storage

Model number of any particular unit does not necessarily reflect the overall length of the unit itself. Dry weight are estimates.

FLAGSTAFF CLASSIC SUPER LITE  
**FIFTH WHEELS**



**KIDS WANT  
TO BRING THEIR FRIENDS?  
NO PROBLEM.  
THIS TRAILER SLEEPS  
PLENTY.**

With a rear bedroom and King-U dinette and hide-a-bed sofa, you have all the sleeping space you need. The Classic Super Lite, making family camping a memorable experience.

All Flagstaff Fifth Wheels come standard with the **Reese Revolution Hitch** allowing you to tow with almost any size truck bed.



**8528BHWS** Oasis with Cherry



**Comfortable Bedroom with Queen Size Serta  
Mattress and Wardrobe Slide.**

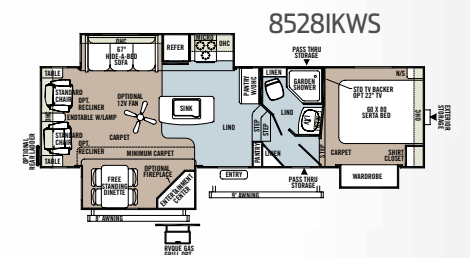
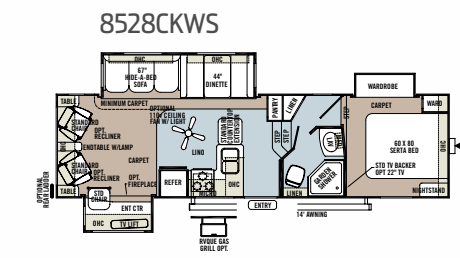
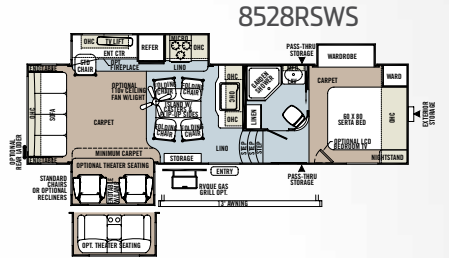
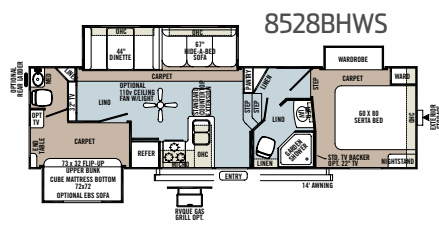
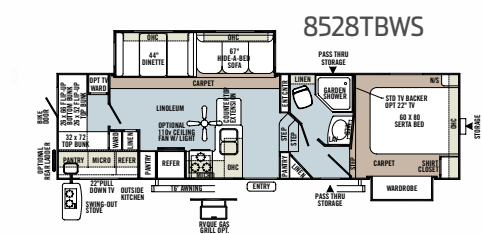
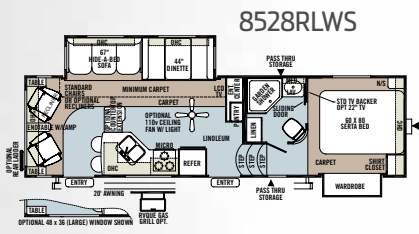
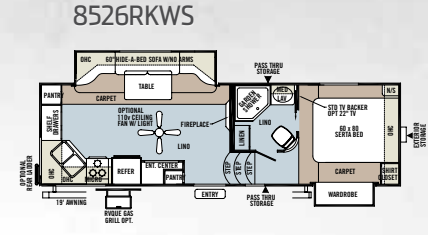
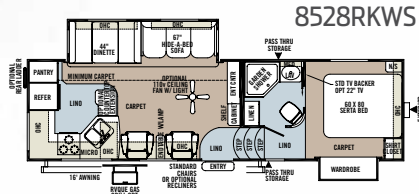
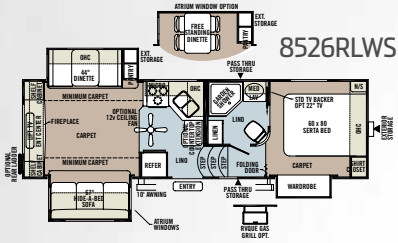


**Rear Bedroom with Convenient Attached Half Bath**



FLAGSTAFF CLASSIC SUPER LITE SERIES

# FIFTH WHEELS

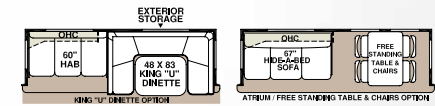


## SPECIFICATIONS

MODEL	8524RLWS	8526RKWS	8526RLWS	8528RKWS	8528BHWS	8528RSWS	8528RLWS	8528TBWS	8528CKWS	8528IKWS
BASE/DRY UNIT WEIGHT	6437	6795	7017	7130	7981	7505	7268	7658	7577	7793
BASE DRY HITCH WEIGHT	1288	1495	1159	1046	1600	1184	1146	1447	1487	1524
BASE DRY AXLE WEIGHT	5149	5300	5858	6084	6381	6321	6211	6090	6090	6269
CARGO CAPACITY	1413	1755	1633	1820	1369	1645	1682	1592	1673	1557
LENGTH (Bumper to hitch front)	26' 9"	29' 3"	29' 10"	31' 3"	31'-11"	31' 8"	31'-11"	31'-11"	31'-11"	31' 8"
WIDTH	96"	96"	96"	96"	96"	96"	96"	96"	96"	96"
HEIGHT W/O A/C	148.5"	148.5"	148.5"	148.5"	148.5"	148.5"	148.5"	148.5"	148.5"	148.5"
FRESH WATER CAPACITY	43 gal	43 gal	43 gal	43 gal	43 gal	43 gal	43 gal	43 gal	43 gal	43 gal
GRAY WATER CAPACITY	38 gal	76 gal	38 gal	76 gal	76 gal	38 gal	76 gal	76 gal	76 gal	76 gal
BLACK WATER CAPACITY	38 gal	38 gal	38 gal	38 gal	76 gal	38 gal	38 gal	38 gal	38 gal	38 gal

Model number of any particular unit does not necessarily reflect the overall length of the unit itself. Dry weight are estimates.

## Slide-Out Options



\*\* Slide options available on Classic/V-Lite super slides only



FLAGSTAFF  
FEATURES



**UPSCALE**  
APPOINTMENTS ARE ALWAYS  
**COMFORTABLE**  
IN A FLAGSTAFF.

Flagstaff takes pride in packing the most value possible into our Classic Super Lite and V-Lite series. While coming standard with many features, you still have the flexibility to incorporate as many options as you choose to fit your personal preferences.



1



2



3



4



5



6



7

FLAGSTAFF  
FEATURES

- 1 Residential Style Air Bed Sofa (*Std. Most Models*)
- 2 Full 60" x 80" queen air mattress on standard sofa (54" x 80" Double air mattress with King- U-Dinette option.)
- 3 Additional storage under sofa
- 4 Extra large dinette storage drawers and full extension metal guides in the kitchen (*Std.*)
- 5 Serta residential grade mattress (*Std.*)
- 6 Free-standing chair with seat storage and table with extension (*Opt.*)
- 7 32" LCD TV w/ 5.1 Dolby Speaker System with "Bluetooth" Technology (*Most Models*)

**FLAGSTAFF  
FEATURES**



- 1** Forest River Switch Center (Std.)
- 2** Gaming plate (Std.)
- 3** Day night shades (Std.)
- 4** The Reese Revolution pin box provides: 1) Full 90 degree worry free turning, 2) Eliminates the need for a slider, 3) Greatly enhances maneuverability [www.reeseprod.com](http://www.reeseprod.com) (Std.)
- 5** Door side cable hook up (Std. Selected Models)
- 6** Heated holding tanks with 12 Volt heat pads secured to the bottom (Std.)
- 7** For convenient winterizing, easy access to the water pump/filter and outside antifreeze inlet are provided. (Std. FW)
- 8** Heated pass through storage with separated front trunk area (Std. FW)
- 9** TPO front cap adds strength and durability (Std.)
- 10** Front window with rock guard for additional daylight (Most TT models)

**FLAGSTAFF  
LUXURIOUS  
RESIDENTIAL FABRICS**



**CHESTERFIELD**



**OASIS**



**SOLARA**



**CHERRY DÉCOR OPTION**



**HICKORY DÉCOR OPTION**



**STANDARD  
FLOOR COVERING**



**OPTIONAL  
FLOOR COVERING**

FLAGSTAFF  
**QUALITY  
 CONTRUCTION**



**THE DETAILS  
 ARE WHAT MAKE ALL THE  
 DIFFERENCE.**

*Flagstaff takes pride in constructing the very best products possible in each price point. From our entry level units to our top of the line products, no short cuts are taken to achieve excellence.*

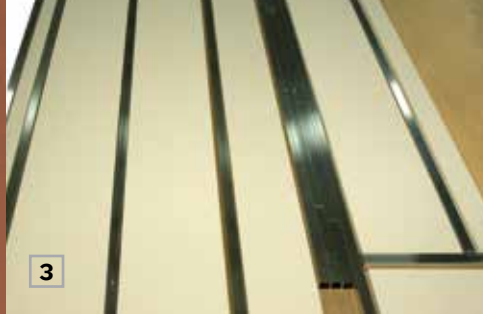
From the all-steel I-beams to the residential interior amenities to the vacuum-bonded exteriors, Flagstaff products are quality-built from the ground-up.



1



2



3



4



5



6



7

**TORFLEX**  
 RUBBER TORSION SUSPENSION AXLES



8

FLAGSTAFF  
**QUALITY  
 CONTRUCTION**

- 1 Glued and screwed wood cabinetry
- 2 Aluminum dinette frames for added strength and weight savings
- 3 Vacuum-bonded floor with 16" on center aluminum floor joists
- 4 Storage Doors with Slam Latches (*Select Locations*)
- 5 All Steel "I" beam frame construction
- 6 Enclosed underbelly protects trailer components as well as increasing aerodynamics
- 7
  - Independent wheel suspension and self-damping action
  - Rubber cushioning eliminates metal-to-metal contact.
  - Forged torsion arm for maximum strength
- 8 Aluminum frame construction and high gloss fiberglass exterior with deluxe graphics



FLAGSTAFF

# QUALITY CONSTRUCTION

## ROOF CONSTRUCTION



Vacuum bonded radius roof with vaulted ceiling providing superior insulation and more interior height.



4" thick roof with built-in insulated A/C ducts.



Built strong to enable you to conveniently perform periodic roof maintenance.

## WALL STRENGTH



Structurally engineered materials makes our vacuum-bonded walls some of the strongest in the industry.

## VACUUM-BONDED LAMINATED CONSTRUCTION



Flagstaff is one of the few manufacturers that produces a ***fully 6 sided vacuum-bonded trailer***. Our walls, floors, roof, fronts and backs are all built vacuum-bonded to ensure a light weight strong structural trailer.

# STANDARDS & OPTIONS

Standards & Options are subject to change.

MODELS	V	CSL TT	CSL FW
<b>INTERIOR FEATURES</b>			
• Hickory and Cherry (w/ Solid Cherry Hand Rubbed Cabinet Doors) Interior	0	0	0
• Decorative Slide Out Fascia	S	S	S
• Upgraded Decorative Slide Out Fascia	DP/PP	DP/PP	DP/PP
• Solid Wood and Raised Panel Doors and Drawers	S	S	S
• Screwed and Glued Cabinetry	S	S	S
• Residential Full Extension Metal Drawer Guides in Kitchen	S	S	S
• Upgraded Cabinetry Hardware	DP/PP	DP/PP	DP/PP
• Flooring: Carpet and an Engineered Mold and Mildew Resistant Floor Covering	S	S	S
• Minimum Carpet available	0	0	0
• Floor Ducted Furnace	S	S	S
• 13,500 BTU Ducted Roof Air	S	S	S
• 15,000 BTU Ducted Roof Air	0	0	0
• Fireplace (Std. 30WRLTS, 30WRLTSA, 831RESS, 8526RKWS, 8526RLWS Only) (Opt. 30WIKSS, 832IKBS, 8528CKWS, 8528IKWS Only)	S*/O*	S*/O*	S*/O*
• Ceiling Fan	--	--	0
• Carbon Monoxide Detector	SO	SO	SO
• 12 Volt Power Plug With USB Charging Port	S	S	S
• CSA	0	0	0
• Monitor Panel	S	S	S
• Battery Disconnect Switch	S	S	S
• 55 Amp Converter With Charger	S	S	S
• LED 12 Volt Interior Lighting	S	S	S
• Interior Floor Light by Entrance Door	S	S	S
• Directional Reading Lights on Sofa Slides	S	S	S
• Residential Dome Style Lights Over Sofa and Table	S	S	S
• Upgraded Recessed Lighting Around Medicine Cabinet	S	S	S
• LCD TV With 5.1 Digital Dolby Surround Sound Speaker System	S	S	S
• Digital AM/FM/DVD w/ "Bluetooth" Technology	S	S	S

V = VLITE  
 CSL/TT = CLASSIC SUPER LITE TRAVEL TRAILER  
 CSL/FW = CLASSIC SUPER LITE FIFTH WHEEL

MODELS	V	CSL TT	CSL FW
• MP3 Player Hook-Up	S	S	S
• 22" LCD TV Mounted in Bedroom (Std., Only on TT Models w/ Center Entertainment Floor Plans)	--	S*	--
• LCD Bedroom TV With Outside Mounting Bracket	0	0	0
• Drop Down 22" LCD TV in O/S Kitchen (829RKBS, 8528TBWS Only)	--	S*	S*
• Jack Knife Sofa (Std. 8524RLWS, Opt. 8528BHWS)	--	--	S*/O*
• Air Hide-A-Bed Sofa w/ Storage (N/A w/: 21WRS, 8524RLWS) (Opt., 831BHDS 2nd sofa)	S*	S/O*	S*
• Upgraded "Tufted" Air Hide-A-Bed Sofa w/ Storage (N/A w/: 21WRS, 26WRB, 28WRBS, 832IKBS, 8524RLWS, 8526RKWS)	DP*/PP*	DP*/PP*	DP*/PP*
• Swivel Chair(s) (Opt., 8524RLWS)	S*	S/O*	S*
• Lazy Boy Leather Recliner Option: Available ILO All Units With Barrel Chairs	0	0	0
• Leather Theater Seating: Available ILO Barrel Chairs (Opt. w/ 30WIKSS, 831RESS, 8528RSWS)	0*	0*	0*
• End Table With Attached Lamp (Where available)	S	S	S
• Designer Valances w/ Lambrequin Arms	S	S	S
• Day/Night Shades	S	S	S
• Deluxe Interior Window Treatment	DP/PP	DP/PP	DP/PP
• Aluminum Bed and Dinette Frames	S	S	S
• 44" Family Style Dinette (N/A w/ 28WRBS, 30WRLTSA, 832IKBS, 8526RKWS, 8528RSWS, 8528IKWS)	S*	S*	S*
• 48" X 84" Spacious King-U-Style Dinette (Std. 28WRBS, 30WRLTSA) (N/A w/: 21WRS, 26WRB, 30WRLTSA, 831RESS, 832IKBS, 8524RLWS, 8526RKWS, 8526RLWS, 8528RSWS, 8528CKWS, 8528IKWS)	S*/O*	0	0*
• Free Standing High Pressure Laminated Table With Swing Level Leg	S	S	S
• Movable Table/Island w/ Folding Chairs (Std. 8528RSWS)	--	--	S*

S = STANDARD  
 SO = STANDARD OPTION  
 O = OPTIONAL

MODELS	V	CSL TT	CSL FW
• Super Dinette w/ Hide-A-Bed Sofa (Std. 8526RKWS)	--	--	S*
• Free Standing Table and Chairs (NA w/: 21WRS, 8526RKWS, 8528RSWS) (Std. 30WRLTSA, 832IKBS, 8528IKWS)	0*	S*/O*	S*/O*
• Stainless Steel Appliances	0	0	0
• Raised Refrigerator Panels	0	0	0
• Auto Gas/Electric Refrigerator	S	S	S
• Three Burner High Output Gas Range	S	S	S
• Upgraded 22" Gas Oven	S	S	S
• Microwave	S	S	S
• Solid Surface Corian Counter Tops in Kitchen/Living Room	DP/PP	DP/PP	DP/PP
• Flush Mount Stone Cast Sinks With Lift-Off Kitchen Faucets	S	S	S
• Residential One-Piece Sink Cover/ Cutting Board	S	S	S
• Water-Pur Filtration System	SO	SO	SO
• Counter Top Extension (Std. 8528BHWS, 8528TBWS, 8528CKWS) (N/A w/ 21WRS, 30WFKSS, 30WIKSS, 30WRLTSA, 831FKBSS, 832IKBS, 8526RKWS, 8528RSWS, 8528IKWS)	0*	0*	S*/O*
• Trash Can in Kitchen (Most Models)	S	S	S
• Tub Surround	S	S	S
• Bathroom Skylight	S	S	S
• Six Gallon "Quick Recovery" 110 DSI Gas/Electric Water Heater	S	S	S
• Water Heater By-Pass Kit	S	S	S
• Residential Style Porcelain Bowl Foot Flush Toilet	S	S	S
• Create-a-Breeze Three Speed Fantastic Fan With Vent Cover	SO	SO	SO
• Extra Create-a-Breeze Fan	0	0	0
• Residential Serta Mattress Upgrade	S	S	S
• Heated Mattress	0	0	0

## EXTERIOR FEATURES

• Fully Laminated Aluminum Frame (Floor, Sidewall, & Roof)	S	S	S
• Insulation Factors R-7 Side Wall, R-12 Floor and R-14 Roof	S	S	S

-- NOT AVAILABLE  
 \* = SELECTED MODELS



MODELS	V	CSL	
		TT	FW
• Radius Roof With Vaulted Interior Ceilings	S	S	S
• One Piece Seamless Roofing Membrane	S	S	S
• TV Antenna w/: Cable & Satellite Hook-Up	S	S	S
• Rear Ladder (N/A w/ 21WRS)	0*	0	0
• Laminated Fiberglass Sidewalls With High Gloss Finish	S	S	S
• Laminated Taupe Color Fiberglass Sidewalls With High Gloss Finish and Color Keyed Roof	DP	DP	DP
• Deluxe TPO High Gloss Front Cap	S	S	S
• Electric Slide-Out	S	S	S
• Decorative Frame Skirting	S	S	S
• Power Awning With Adjustable Rain Dump	S	S	S
• Power Awning With Adjustable Rain Dump and Shielded Awning Covers	DP	DP	DP
• Awning Slide Topper	0	0	0
• 30" Entrance Door (Most Models)	S	S	S
• Lighted Entry Step	S	S	S
• Large Grab Handles	S	S	S
• Windows w/ Tinted Safety Glass	S	S	S
• Tinted Bonded Frameless Windows	DP/PP	DP/PP	DP/PP
• Thermo Pane Window Upgrade	0	0	0
• Atrium Slide Windows (Super Slides)	S*/0*	S*/0*	S*/0*
• Outside Gas Grill and Worktable	0	0	0
• Outside Grill Prep w/ LP Hookup and Backer	S	S	S
• Outside Speakers	S	S	S
• Outside Shower	S	S	S
• Front Outside "Trunk" Storage Separated From Heated Pass Thru Storage Compartment	--	--	S
• Outside Antifreeze Inlet for Convenient Winterizing	S	S	S
• Slam Latches on Most Exterior Storage Doors (N/A 28WRBS)	DP	DP	DP
• Slam Latch on Both Side Pass Thru Storage Doors & Front Compartment Door	--	--	S
• Slam Latch on Pass Thru Storage Doors (Models w/ Front Bedrooms Only)	--	S*	--
• Two 30 lb. Gas Bottles	S	S	S
• Molded Bottle Cover	S	S	S
• Surface Coated Steel I-Beam Frame	S	S	S
• Reese Revolution Hitch	--	--	S
• Power Front Jack	0	0	S



MODELS	V	CSL	
		TT	FW
• Stabilizer Jacks	S	S	S
• Power Stabilizer Jacks	0	0	S
• Torsion Axle, Rubber-Ryde Suspension	S	S	S
• Easy Lube Axles	S	S	S
• 15" Tires With Triple Step	S	S	S
• Aluminum Wheels	S	S	S
• Spare Tire Carrier & Cover	S	S	S
• Enclosed Holding Tanks	S	S	S
• Electronically Controlled Heated Holding Tanks	S	S	S
• Black Water Flush	S	S	S
<b>CONVENIENCE PACKAGE "D" INCLUDES:</b>	SO	--	--
• 13,500 BTU Ducted Air			
• Upgraded 22" Gas Oven			
• Microwave			
• 110 DSI Gas/Electric Six Gallon "Quick Recovery"			
• Water Heater			
• Residential Serta Mattress Upgrade			
• Fiberglass Exterior With High Gloss Finish			
• Power Awning With Adjustable Rain Dump			
• Windows w/ Tinted Safety Glass			
• Outside Speakers			
• Aluminum Wheels			
• Spare Tire Carrier & Cover			
<b>CONVENIENCE PACKAGE "E" INCLUDES:</b>	--	SO	--
• 13,500 BTU Ducted Air			
• Microwave			
• Residential Serta Mattress Upgrade			
• Fiberglass Exterior With High Gloss Finish			
• Power Awning With Adjustable Rain Dump			
• Windows w/ Tinted Safety Glass			
• Outside Speakers			
• Aluminum Wheels			
• Spare Tire Carrier & Cover			
• Deluxe TPO High Gloss Front Cap			



MODELS	V	CSL	
		TT	FW
<b>CONVENIENCE PACKAGE "F" INCLUDES:</b>	--	--	SO
• 13,500 BTU Ducted Air			
• Microwave			
• Residential Serta Mattress Upgrade			
• Fiberglass Exterior With High Gloss Finish			
• Power Awning With Adjustable Rain Dump			
• Windows w/ Tinted Safety Glass			
• Outside Speakers			
• Aluminum Wheels			
• Spare Tire Carrier & Cover			
• Power Stabilizer Jacks			
<b>DIAMOND PACKAGE INCLUDES:</b>	0	0	0
• Upgraded Decorative Slide Out Fascia			
• Upgraded Cabinetry Hardware			
• Upgraded Air Hide-A-Bed "Tufted" Sofa w/ Storage (N/A w/: 21WRS, 26WRB, 28WRBS, 832IKBS, 8524RLWS, 8526RKWS)			
• Deluxe Interior Window Treatment			
• Solid Surface Corian Counter Tops in Kitchen/Living Room			
• Laminated Taupe Color Fiberglass Sidewalls With High Gloss Finish and Color Keyed Roof			
• Shielded Awning Covers			
• Tinted Bonded Frameless Windows			
• Slam Latches on Most Exterior Storage Doors (N/A 28WRBS)			
<b>PLATINUM PACKAGE INCLUDES:</b>	0	0	0
• Upgraded Decorative Slide Out Fascia			
• Upgraded Cabinet Hardware			
• Upgrade Air Hide-A-Bed "Tufted" Sofa w/ Storage (N/A w/: 21WRS, 26WRB, 28WRBS, 30WIKSS, 832IKBS, 8524RLWS, 8526RKWS, 8528RSWS)			
• Deluxe Interior Window Treatment			
• Solid Surface Corian Counter Tops in Kitchen/Living Room			
• Tinted Bonded Frameless Windows			



### PRE-DELIVERY INSPECTION FACILITY

20,000 square feet of quality assurance. The bare essentials for a premium product. This state-of-the-art facility gives immediate daily feedback to production for quality assurance in every unit built.



## FLAGSTAFF WARRANTY

For details on Flagstaff's complete warranty program, see your Flagstaff dealer. When it comes to backing products with the same quality and commitment it has when it begins the manufacturing process, the only name you have to remember when you're looking for a recreational vehicle is Flagstaff. Flagstaff offers the following additional limited warranties to the original purchasers. Consult written warranty for details.

1. Twelve-year vinyl roof warranty, 2. Two-year fiberglass warranty, 3. Five-year axle warranty, 4. One-year bumper to bumper, 5. Available second-year warranty.



Forest River, Inc. encourages our customers to purchase their Forest River products from a local dealership whenever possible for the following reasons:

- 1) Forest River, Inc. dealers are independently owned and operated businesses so priority service and scheduling is at their discretion and is often provided to customers that purchased their unit at that dealership.
- 2) Purchasing locally allows customers to establish meaningful relationships with a dealer, enhancing the RV experience through assistance with product questions, user tips or RV regulations for your state or country, and much more!
- 3) Canadian customers must meet requirements to bring an RV purchased out of the country to their home. These requirements may involve additional inspections and certifications, taxes and fees. Your local Canadian Dealer is a professional at meeting these requirements.
- 4) Scheduling timely warranty repairs and adjustments through a local dealership provides far greater flexibility and convenience to you, the customer!

It is the goal of Forest River, Inc. that all of our RV owners fully enjoy the RV experience and that customer satisfaction meets or exceeds their expectations!

### 24/7 EMERGENCY ROADSIDE ASSISTANCE

For a worry-free ownership experience

Forest River includes one

year of Coach-Net RV Technical & Roadside

Assistance with each RV purchase. Whether new to the RV lifestyle or an experienced RV enthusiast, Forest River owners have 24/7 access to technical, operational and emergency road service coverage throughout the US & Canada.

Coach-Net's fast, dependable service is just a phone call away.

## Coach-Net®

RV Technical & Roadside Assistance

YOUR FLAGSTAFF DEALER

201 West Elm Millersburg, IN 46543 | [www.forestriverinc.com/Flagstaff](http://www.forestriverinc.com/Flagstaff)  
574.642.2640



#### Learn More

Scan this barcode using a QR Reader on your smart phone to learn more about Forest River.



A Berkshire Hathaway company.

All specifications contained herein are based on the latest product information at time of printing. Forest River reserves the right to make changes in colors, materials, equipment and specifications at any time without notice and assumes no responsibility for any errors in this brochure. Litho. U.S.A 2013.06.14 | W