

# ALPINE

## THE NEXT GENERATION OF RS





# ALPINE

Keystone RV is proud to introduce its most *Livable, Innovative and Luxurious* full time fifth wheel - Alpine.

Extensive planning went into the creation of this "Next Generation" RV. Alpine showcases many game changing features like its *Spacious Wide Body Interiors, Huge Panoramic Frameless Windows and Enormous Slide Room Heights*. These features simply won't be found in other high profile fifth wheel brands.

Alpine was designed with you in mind - a customer who deserves and demands the highest level of *Quality and Craftsmanship* available in the marketplace today.

-Team Alpine

## NEXT GENERATION *Comfort*

-14° Outside



Alpine now has industries highest rated heating pads safely protecting the holding tanks. With an impressive list of industry- leading construction advancements, Alpine sets the bar in four season living.

Not everyone needs this kind of protection, but when four season comfort becomes important, make sure you demand the very best... demand an Alpine!

72° Inside

**COMFORT** INDOORS



# FULL TIME CAMPING



## FULL TIME SIZE

- 6' 8" Summit Slides
- 100" Wide Body Design
- 60" x 48" Frameless Windows
- 200 cu. ft. of Exterior Storage
- 18 cu. ft. Residential Refrigerator (OPTIONAL)

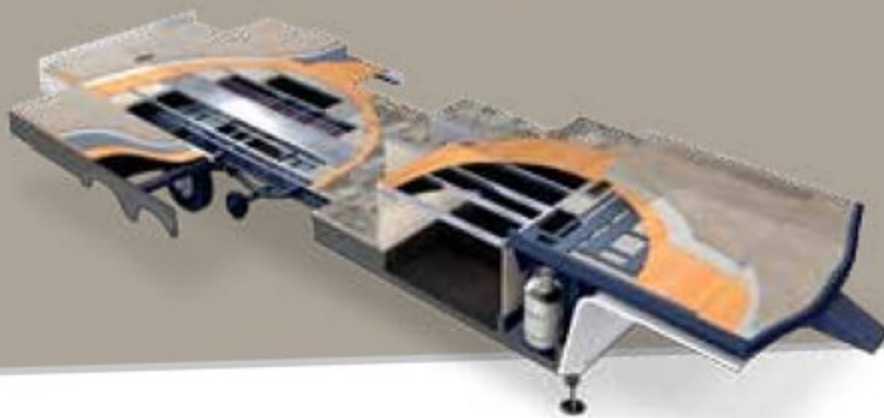
## FULL TIME COMFORT

- 62,000 BTU of HVAC Options
- Dual 15,000 BTU Whisper Air w/Heat Pump
- 42,000 BTU Furnace + 20,000 Electric Heat Possible
- Double Sprung Thomas Payne Furniture
- Four Step Entry



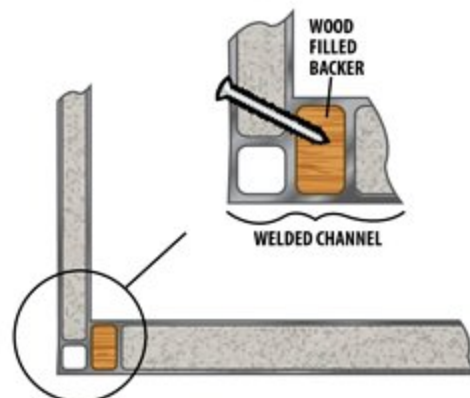
## FULL TIME ENTERTAINMENT

- 48" LED Samsung TV
- Bose Solo Sound Bar
- Samsung DVD Player
- 32" LED Bedroom TV
- Harmon Kardon Bluetooth



## FULL TIME CONSTRUCTION

- G-rated tires standard
- Holding tanks rated to -14°
- Painted front cap
- 5 year warranty on graphics
- Solid amish hardwoods throughout



## BONUS FEATURES

- Grand Staircases
- Dyson Vacuum
- Garage Storage
- Real Cedar Plank Closet
- Interior/Exterior LED Lights



# ALPINE

## -14° NEXT GENERATION *Construction*

With an impressive list of industry-leading construction advancements, Alpine sets the bar for four season living.

### WALL CONSTRUCTION (R-10)

1. High Gloss fiberglass exterior walls, baggage doors, and entry door
2. Dual 1/8" luan backers with staggered seams
3. High density block foam insulation
4. Radius window corner blocks for additional integrity
5. 2" Welded aluminum sidewall studs
6. Fiberglass batten insulation
7. Thermo-foil insulation
8. Patented fiberglass cap with 4mm coated graphics
9. Metal backing strips for added support
10. Cambered steel cap backing for increased turning radius - "Max Turn" Thermo-foil insulation

### ROOF CONSTRUCTION (R-28)\*

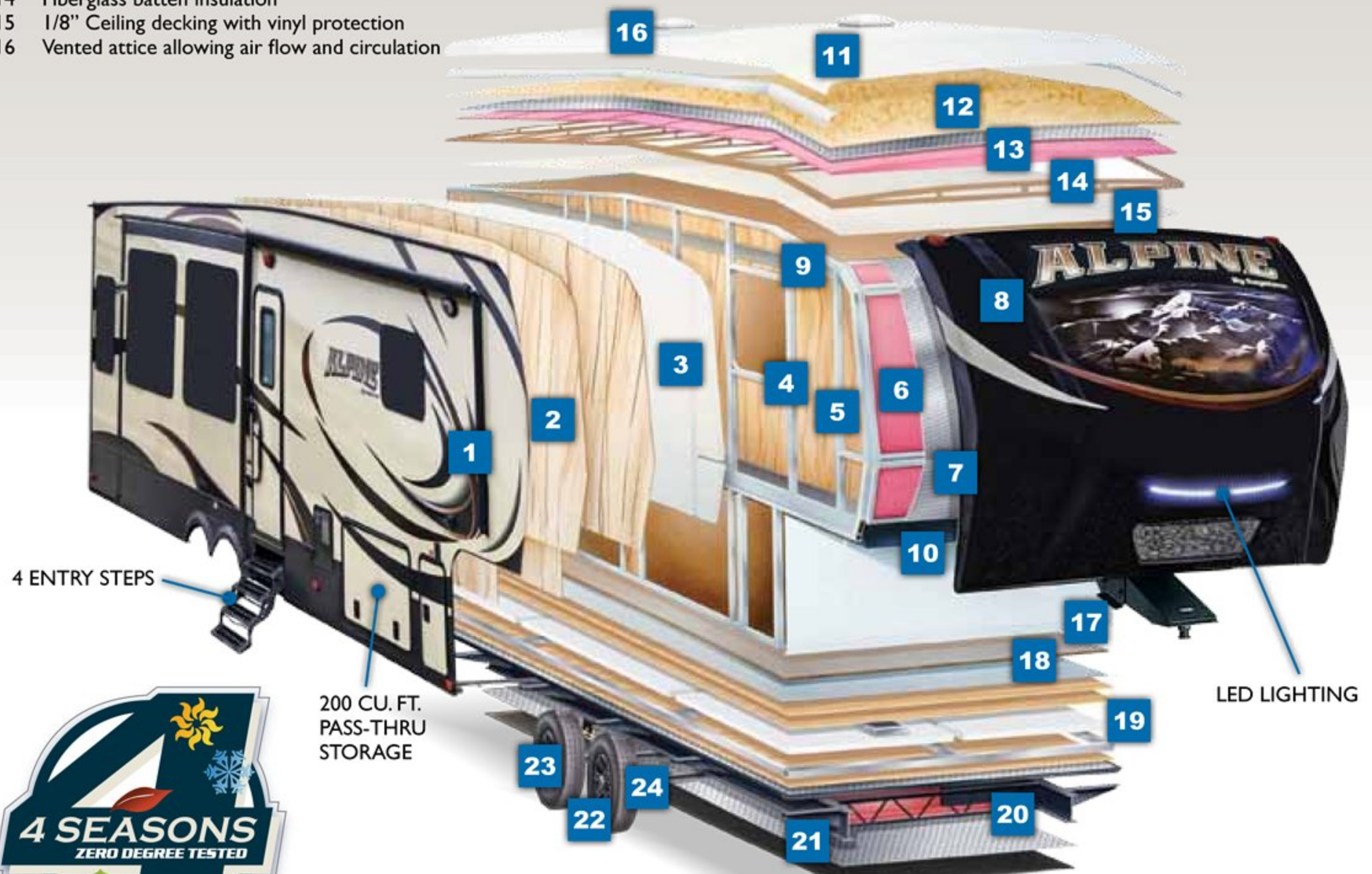
- 11 One-piece T.P.O. roof with 12-year warranty
- 12 3/8" Fully walkable roof decking
- 13 Thermo-Foil insulation
- 14 Fiberglass batten insulation
- 15 1/8" Ceiling decking with vinyl protection
- 16 Vented attice allowing air flow and circulation

### FLOOR CONSTRUCTION (R-40)\*

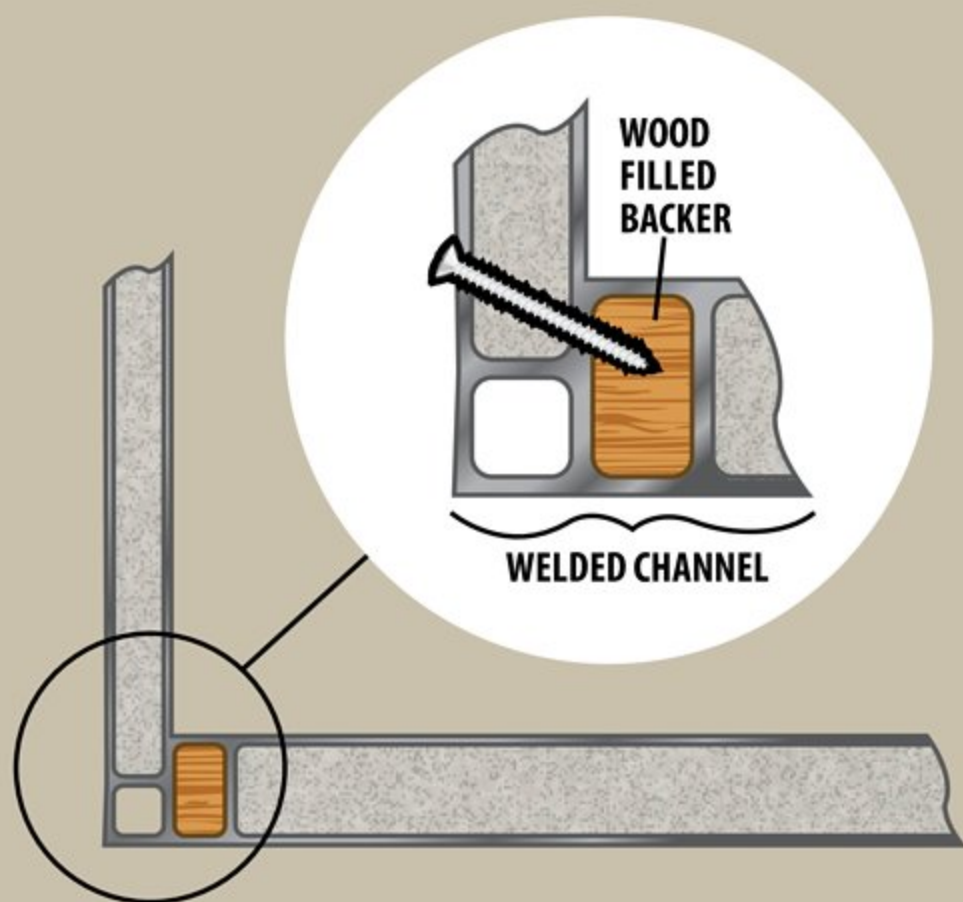
- 17 Residential grade high density Shaw 28 oz. carpet with stain protection
- 18 Residential grade carpet padding
- 19 Floor wrap, wood backing, aluminum structure, and Astro-Foil insulation, thermo-insulation
- 20 Therma-Shield holding tank protection system featuring: one piece fluted polypropylene fully enclosed subfloor; fiberglass batten insulation, heating pads and ducted heat

### TIRES AND CHASSIS

- 21 12" steel "powder coated" steel I-beams
- 22 G rated tires
- 23 EZ-Lube 8 lug, 7,000lb axles
- 24 Equa-Flex Suspension with 1/2" steel shackles and 8 greasable fittings with brass bushings







# TRUE WALL 2X CHANNEL TECHNOLOGY

- ✓ 110 CU. FT. OF LIVING SPACE IN UNITS - WIDE BODY 2X
- ✓ CUSTOM EXTRUDED ALUMINUM SUPPORT CHANNEL
- ✓ WELDED FOR MAXIMUM STABILITY
- ✓ PATENT PENDING

**30,000 BTU**

# WHISPER

A I R S Y S T E M



- Residential cold air return
- "Whisper Deluxe" HVAC System (Quietest cooling system ever developed)
- Most Powerful heating (42,000 BTU) and AC system (30,000 BTU). *One 15,000 BTU heat pump comes standard.*
- Programmable dual zone controlling air conditioner w/digital thermostat for multi zone comfort

**ALPINE**  
www.kestonerv.com/Alpine





# ALPINE

## NEXT GENERATION

*Style*

3900RE SHOWN IN  
FOREST FLOOR DECOR





3900RE GARAGE







# ALPINE

## NEXT GENERATION

*Style*

3536RE SHOWN IN  
FOREST FLOOR DECOR





**3536RE KITCHEN**



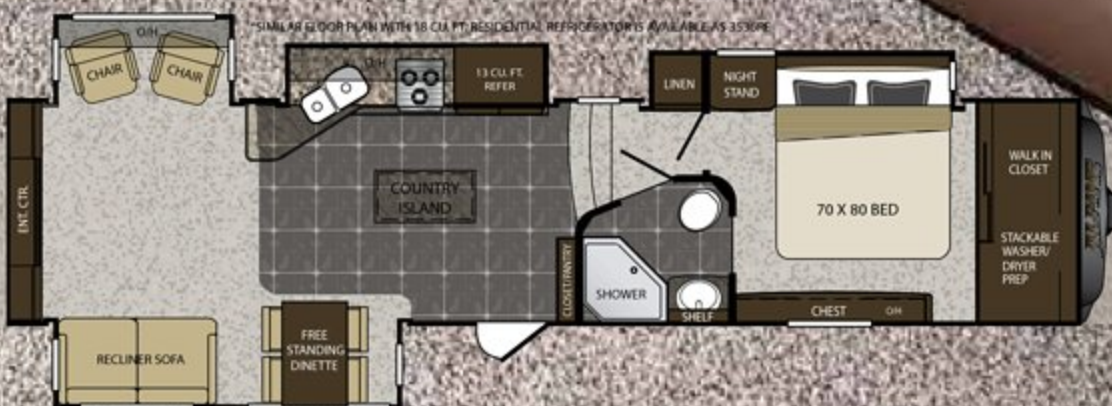
**3536RE SHOWN IN FOREST FLOOR DECOR**



**DYSON SWEEPER**

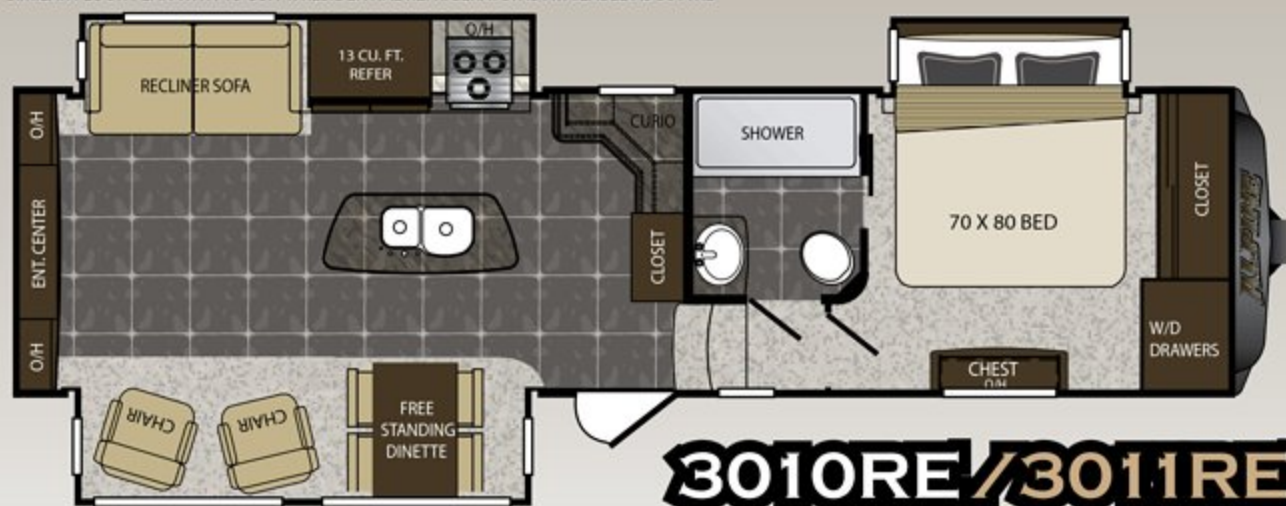


**OPTIONAL 18 CU. FT. REFRIGERATOR**



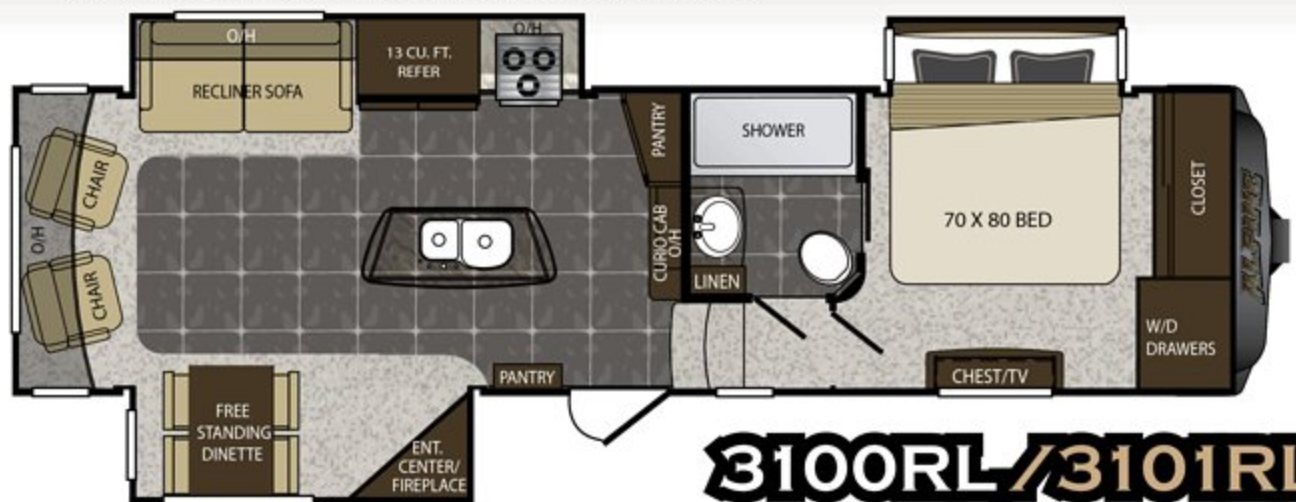


\*SIMILAR FLOOR PLAN WITH 18 CU. FT. RESIDENTIAL REFRIGERATOR IS AVAILABLE AS 3011RE



**3010RE/3011RE\***

\*SIMILAR FLOOR PLAN WITH 18 CU. FT. RESIDENTIAL REFRIGERATOR IS AVAILABLE AS 3100RL



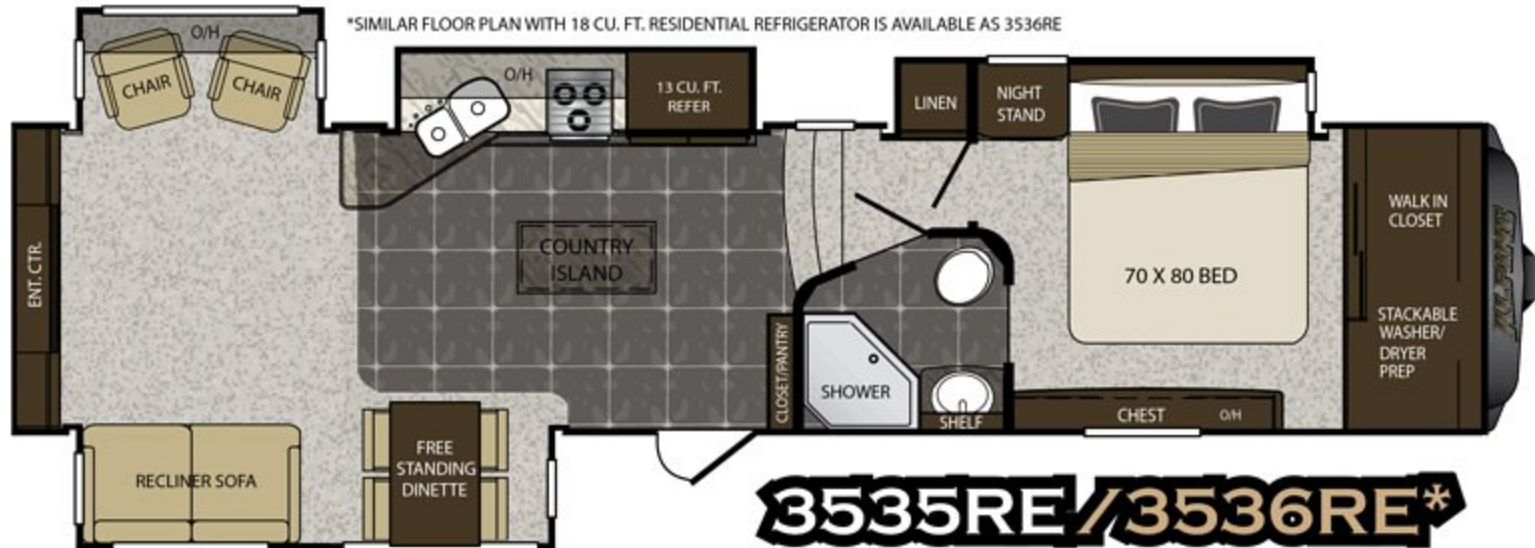
**3100RL/3101RL\***

\*SIMILAR FLOOR PLAN WITH 18 CU. FT. RESIDENTIAL REFRIGERATOR IS AVAILABLE AS 3511RE



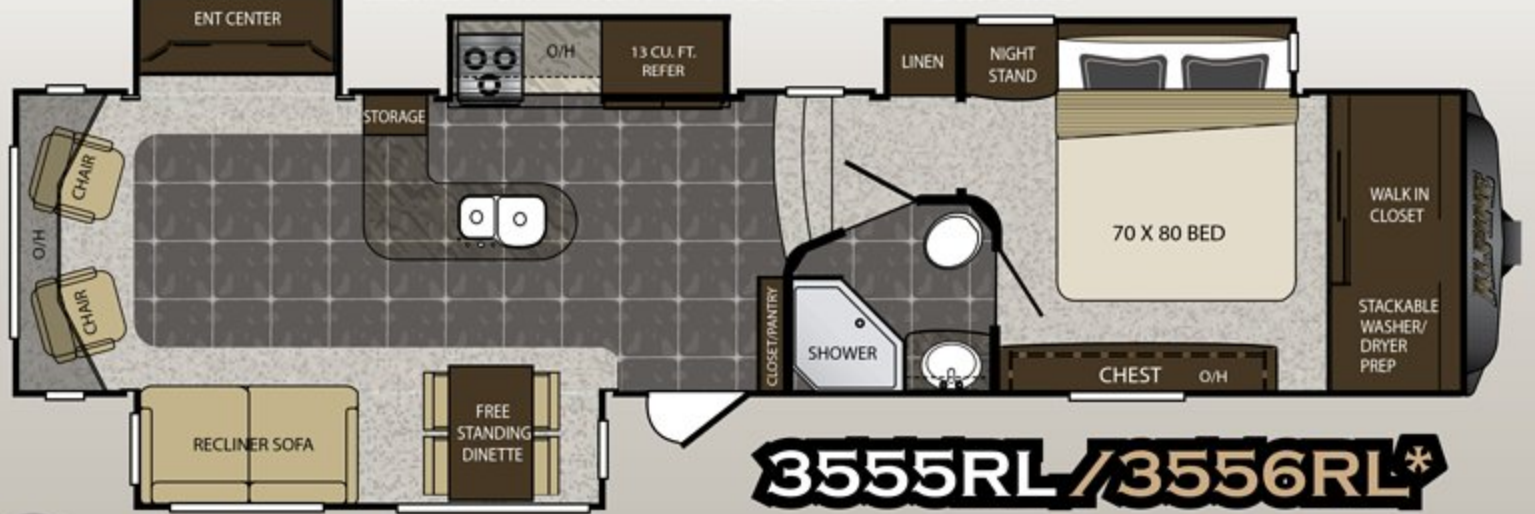
**3510RE/3511RE\***

\*SIMILAR FLOOR PLAN WITH 18 CU. FT. RESIDENTIAL REFRIGERATOR IS AVAILABLE AS 3536RE



**3535RE/3536RE\***

\*SIMILAR FLOOR PLAN WITH 18 CU. FT. RESIDENTIAL REFRIGERATOR IS AVAILABLE AS 3556RL



**3555RL/3556RL\***

# ALPINE FLOOR



## SPECIFIC

MODEL	3010RE	3100RL	3510RE	3535RE
SHIPPING WEIGHT	11720	11655	13100	12712
CARRYING CAPACITY	3280	3345	2400	2788
HITCH WEIGHT	2572	2580	2530	2505
EXTERIOR LENGTH	34' 1"	34' 1"	39' 2"	39' 1"
EXTERIOR WIDTH	8' 4"	8' 4"	8' 4"	8' 4"
EXT. HEIGHT - A/C TOP	12' 8"	12' 8"	12' 8"	12' 8"
FRESH WATER (GAL.)	66	66	66	66
WASTE WATER (GAL.)	50	48	82	50
GRAY WATER (GAL.)	82	80	82	82
LP CAPACITY (LBS.)	60	60	60	60
AWNING LENGTH	18'	16'	18'	18'

DISCLAIMER: Product information is as accurate as possible as of the date of publication of this brochure. All features, floor plans, and specifications in this brochure are subject to change without notice. Please also consult Keystone's web site at [www.keystonerv.com](http://www.keystonerv.com) for more current product information and specifications. Tow Vehicle Disclaimer. CAUTION: Owners of Keystone recreational vehicles are solely responsible for the selection and proper use of tow vehicles. All customers should consult with a motor vehicle manufacturer or their dealer



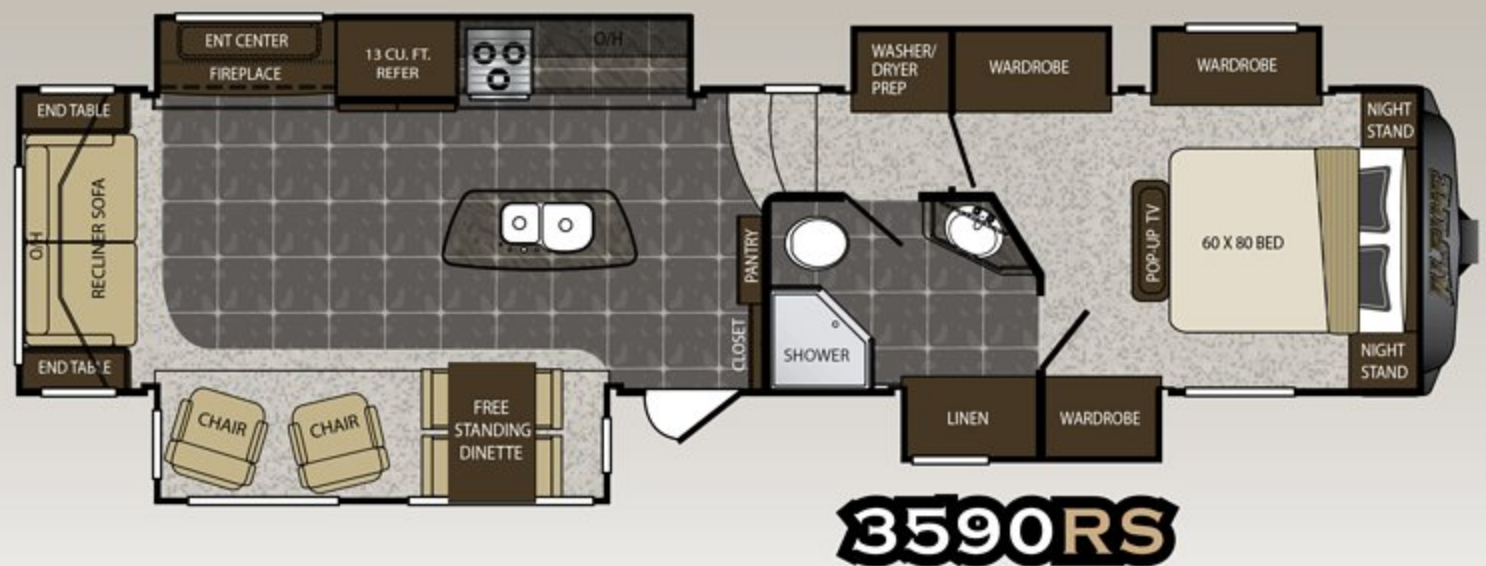
# ALPINE PLANS



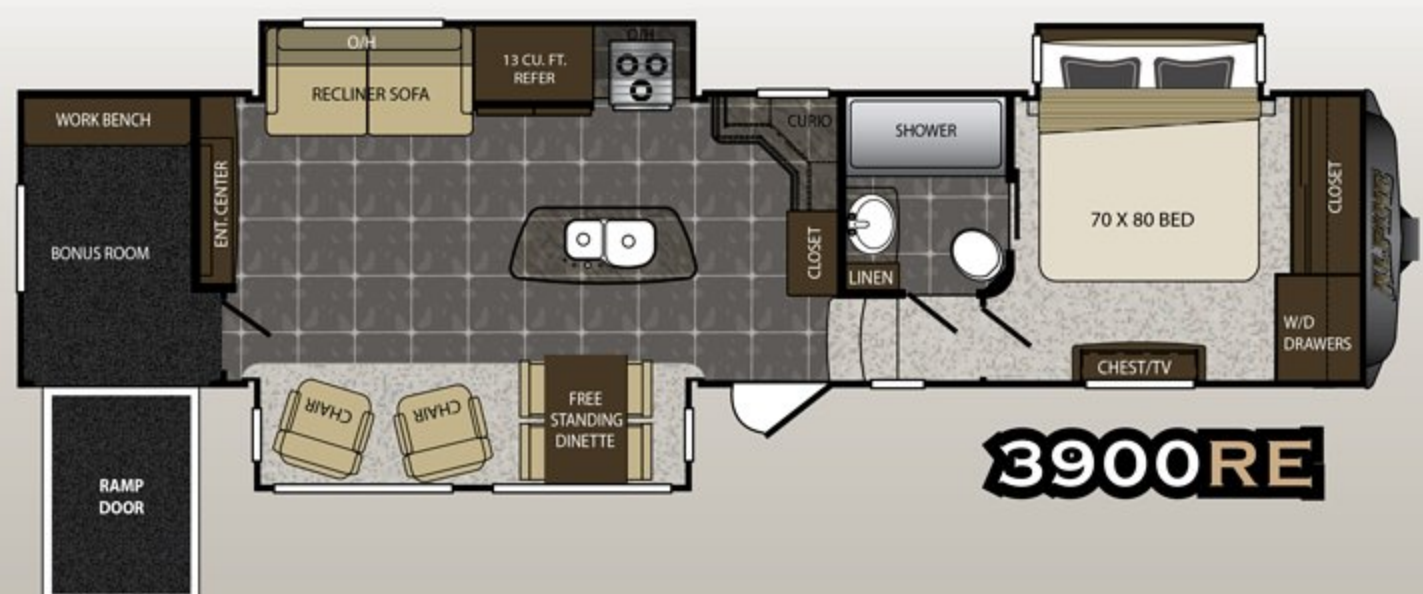
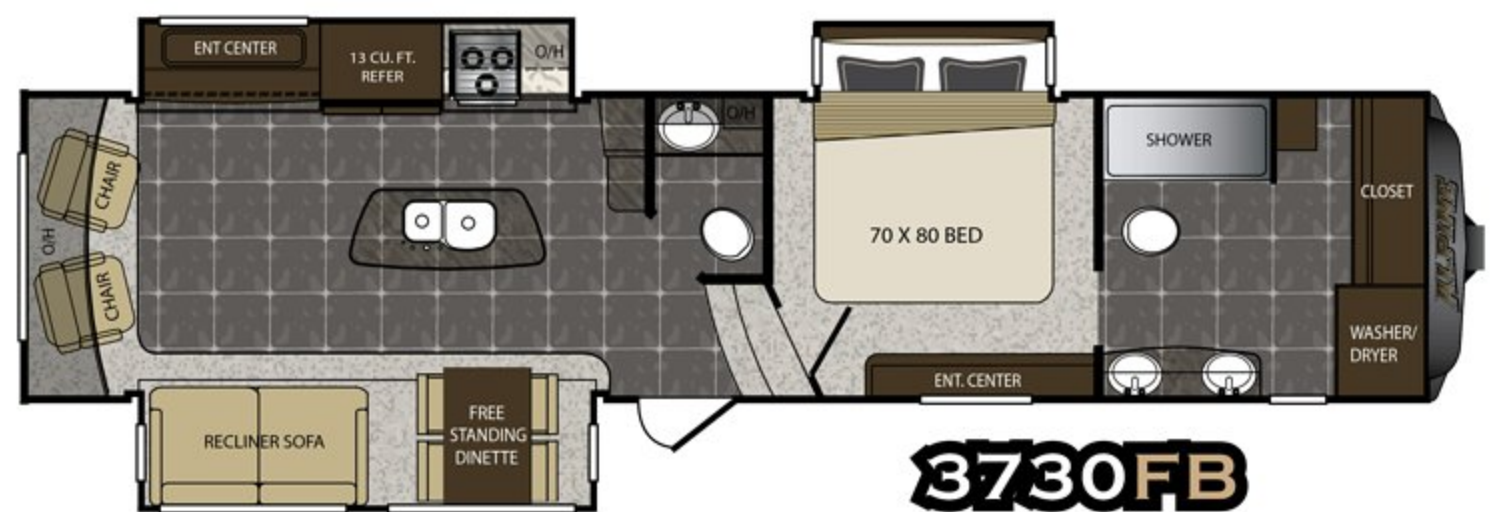
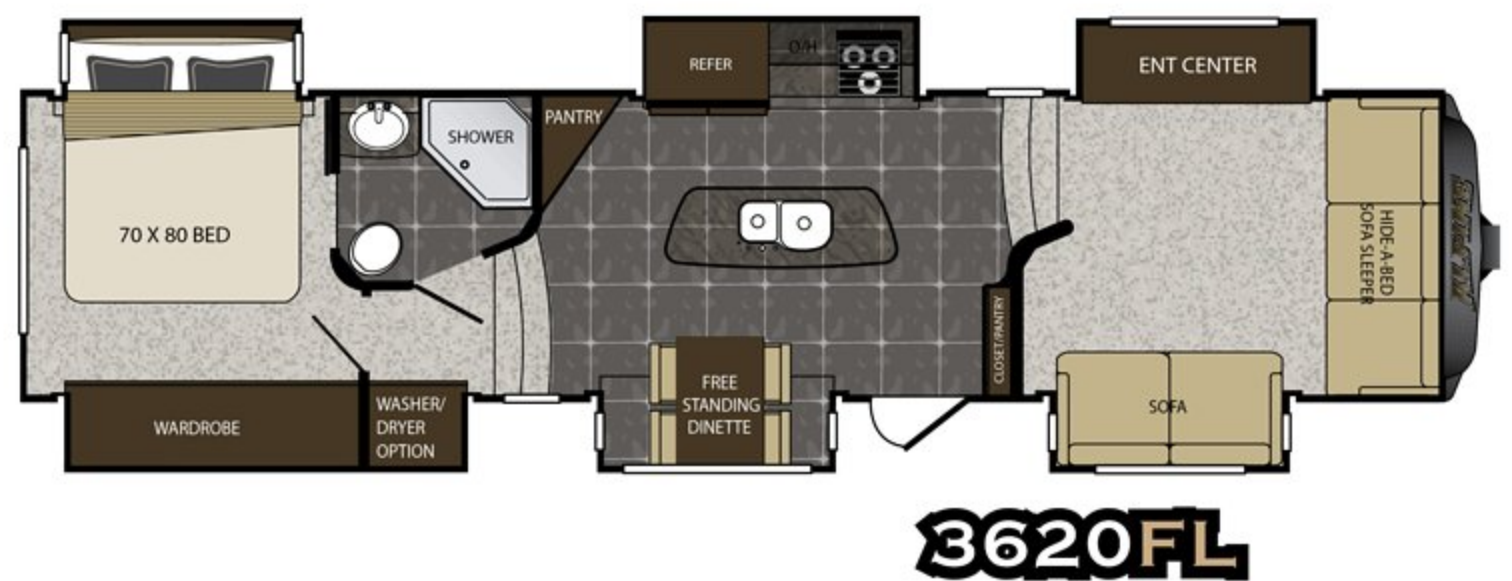
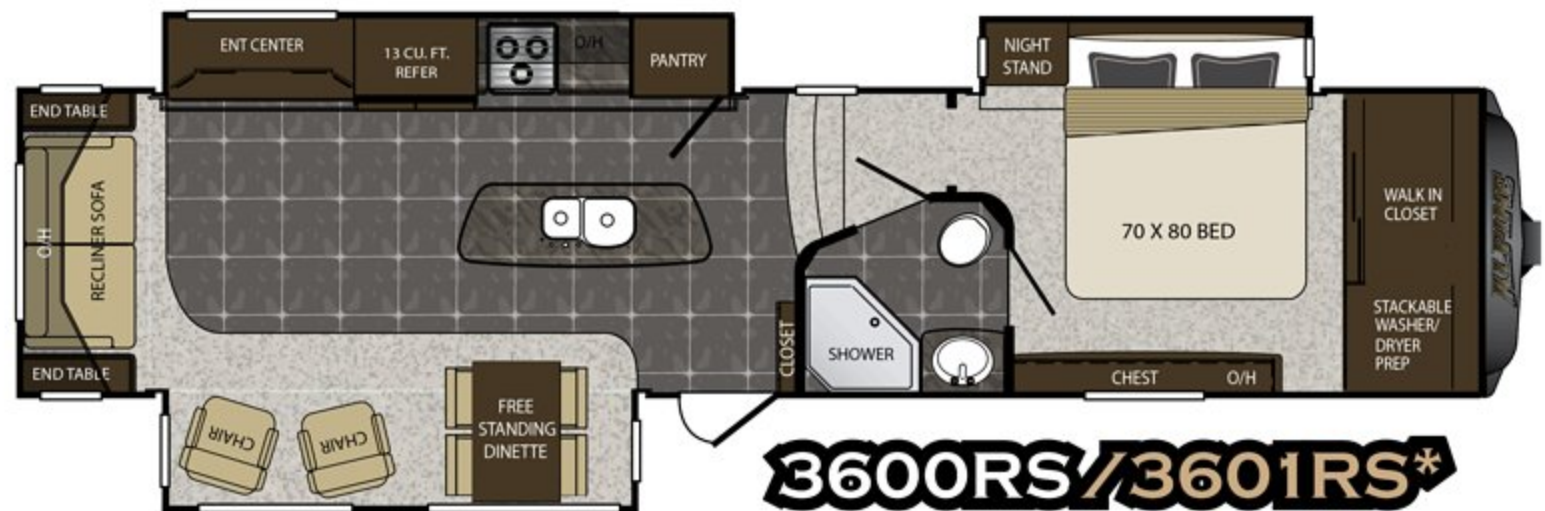
# CATIONS

3555RL	3590RS	3600RS	3620FL	3730FB	3900RE
12740	12655	12354	12370	12725	12960
2760	2845	3146	3130	2775	2540
2630	2680	2400	2640	2435	2805
38' 11"	39'	38' 11"	39' 1"	39' 2"	39' 1"
8' 4"	8' 4"	8' 4"	8' 4"	8' 4"	8' 4"
12' 8"	12' 8"	12' 8"	12' 8"	12' 8"	12' 8"
66	66	66	66	66	66
50	50	50	82	82	48
82	82	82	82	82	80
60	60	60	60	60	60
18'	19'	19'	14'	18'	16'

concerning the purchase and use of suitable tow vehicles for Keystone products. Keystone disclaims any liability or damages suffered as a result of the selection, operation, use or misuse of a tow vehicle. KEYSTONE'S LIMITED WARRANTY DOES NOT COVER DAMAGE TO THE RECREATIONAL VEHICLE OR THE TOW VEHICLE AS A RESULT OF THE SELECTION, OPERATION, USE OR MISUSE OF THE TOW VEHICLE. \*Length is defined as the distance from the center line of hitch pin/coupler to rear bumper of trailer. Add 6 inches for MOR/ryde pin box. \*\* Add 6 inches for second A/C.



\*SIMILAR FLOOR PLAN WITH 18 CU. FT. RESIDENTIAL REFRIGERATOR IS AVAILABLE AS 3601RS







# ALPINE

## NEXT GENERATION

*Style*

3510RE SHOWN IN  
IVY LEAGUE DECOR





**3510RE KITCHEN**



**NAME BRAND ENTERTAINMENT**



**3510RE SHOWN IN IVY LEAGUE DECOR**





# NEXT GENERATION *Features*

## A. OVERSIZED PASS THROUGH STORAGE –

Alpine boasts the industry's largest pass-through storage at over 190 cubic feet. You won't have to worry about your possessions sliding around as we have used non-skid rubber diamond flooring and metal D-rings to secure them. Plus, ducted heat in the storage area as well.

## B. DYSON DIGITAL SLIM VACUUM

The most powerful cordless vacuum with root cyclone technology and charges up to 3 times faster than others.

## C. The Alpine's FULLY ENCLOSED AND HEATED "WATER WORKS"

compartment houses your dump valves, low point drains, exterior high pressure sprayer, black tank flush hookup, quick winterization kit and city water hookups.

## D. FRAMELESS WINDOWS

add to the sleek and luxurious look of the Alpine exterior

## F. SOLID SURFACE COUNTERS, SINK COVERS, HINGED RANGE COVER –

Alpine uses some of the finest solid surface material available and includes fitted sink covers and range cover. The range cover is hinged so that storage is convenient, easy, and out of the way.

## G. RESIDENTIAL REFRIGERATOR:

Stainless steel with 70% more storage than the largest RV refrigerators means making a few less trips to the grocery store (select floor plans)

## H. DEEP SPLIT BOWL SINK

makes it easy to fit large pots and pans

## I. OVERSIZED LP STORAGE

allows you to use two 30 lb. tanks on the same side

## J. KETTLE STORAGE UNDER REFRIGERATOR

allows for extra storage for large pots and pans.

## K. INTERIOR LED LIGHTS

are energy efficient and doesn't emit large amounts of heat like traditional lighting

## L. EQUA-FLEX SUSPENSION: 1/2" shackles and greasable fittings,

provide strength and a comfortable ride

## M. 30" 4-STEP ENTRY

is wide enough to transport large or bulky items





**REAL STAINLESS STEEL**







**AIR MATTRESS FITS ON TOP OF THE EXISTING SOFA TO CREATE ADDITIONAL SLEEPING SPACE**



**INTELLIGENT KITCHEN STORAGE SOLUTIONS IN MOST ALPINE FLOOR PLANS**



**FOLDING CHAIRS ARE INCLUDED TO CREATE A TABLE FOR FOUR**



**3600RS ISLAND KITCHEN**





**MOST ALPINE FLOOR PLANS INCLUDE PLENTY OF PANTRY STORAGE**



**CEDAR WALK-IN CLOSETS IN MOST FLOOR PLANS FEATURING WASHER/DRYER PREP AND LARGE HDTVS**



**LARGE SHOWERS IN MOST MASTER BATHROOMS**



# NEXT GENERATION *Innovation*



**PATENTED FRONT CAP** THAT ISN'T DYED LIKE COMPETITORS. INCLUDES 5 YEAR WARRANTY ON FRONT CAP 4MM GRAPHICS



**100" WIDE BODY** WITH REAR LED TAIL LIGHTS



**SUMMITT SLIDES** WITH HUGE WINDOWS FOR BEAUTIFUL PANORAMIC VIEWS

**OPTIONAL**

## ONE TOUCH 6-POINT LEVEL-UP SYSTEM



- ✓ Power up/power down system that weighs less than 80 lbs. TOTAL, but can lift 60,000 lbs!
- ✓ Leveling jacks operate in pairs, eliminating the worry of twisting and damages
- ✓ Extruded jack legs made of 6061-TG anodized aluminum alloy



**One touch *AUTO LEVEL* feature!**



# STANDARDS & OPTIONS

## EXTERIOR FEATURES

- G rated tires
- Heavy duty 7,000lb axles
- Easy lube axles
- 12" -Beams with Z-frame technology
- "No Sweat" vented attic system
- 50 AMP service w/ detachable power cord
- Hydraulic selector valves for slideouts
- Hydraulic front landing jacks w/ 8" diameter all-terrain landing pads
- Gutters w/ rain spouts
- Rear Ladder
- One-Touch electric awning package w/ adjustable arms
- Tinted 80% safety-glass windows
- Electric rear jacks
- MAX TURN high-gloss fiberglass front cap and rear with 30% better turning radius, aerodynamic design w/ 18% better drag efficiency and hitch Assist back up mirror
- High Gloss exterior sidewalls, baggage doors, and entry door
- Class "A" style dual latch "slam" baggage doors
- Easy open 4-step entry steps w/ recessed rope lighting for visibility
- Super-size 6'4" tall, 30" wide entry door
- Deluxe Graphics package
- High Gloss fiberglass rear cap
- One piece polypropylene underbelly
- Therma Max heat padded holding tanks

## ALL-IN-ONE "WATERWORKS" EXTERIOR UTILITY CENTER

- Easy siphon winterization system
- Water heater bypass
- Enclosed low point drain valves
- Ducted heat for cold weather protection
- Dump valves
- 110V outlet
- Black tank spray hookup

## SUSPENSION

- Improved impact absorption
- Improved axle equalization
- 8 Greasable "wet" bolts
- Long lasting 1/2" steel shackle plates
- Long lasting bronze bushings

## UPGRADED APPLIANCE PACKAGE

- Stainless steel stove, range, convection
- 30" convection oven/microwave
- 12 Gallon DSI 2-way water heater
- 42,000BTU furnace (most models)
- Digital "Smart" Thermostat with dual zone capability
- Heavy duty residential ball bearing drawer guides
- Extra deep, fully extendable drawers

## DELUXE SOLID SURFACE PACKAGE

- solid surface countertops
- Flush Mounted solid surface range cover
- Corian sink cover
- Stainless steel extra deep sink

- w/ dual bowls
- High rise, single lever kitchen faucet w/ sprayer
- Maximized kitchen storage w/ more drawers and pantry space

## SUPER CINEMA PACKAGE

- Huge Samsung 48" LED TV
- Bose® Solo TV Sound System
- Samsung DVD player
- Digital TV antenna w/ built in booster
- Dual cable & satellite hookups

## INTERIOR FEATURES

- Upgraded sofa
- 2 high back custom dinette chairs
- Folding chairs (2)
- Extra tall 6' 8" main slide height
- Faux wood blinds
- Ceiling fan with upgraded lighting fixtures
- Electric roof vent in kitchen
- LP leak detector
- "One Place Command Center" centrally located operational switches & gauges
- Translucent glass shower door and enclosure
- Hand held massaging shower head
- Skylight over shower
- Porcelain toilet
- Single level master bedroom suite
- "Cloud Nine" 70" x 80" pillow top king bed mattress (60" x 80" Queen Bed in 3590RS)
- Residential style headboard w/shelves
- Cross ventilation bedroom windows where available
- Quilted bedspread and pillows

## ALPS PACKAGE NORTH FACE INSULATION PACKAGE

- Triple insulated
- Heated basement
- Heat ducting to tanks with heated padding
- Heated "Water Works" area

## SURE-ROAD BUNDLE

- Class "A" style slam baggage doors
- Rear power jacks
- Hydraulic front jacks
- High gloss sidewalls & doors
- Electric one-touch awning
- Suspension system

## CHATEAU PACKAGE WHISPER AIR BUNDLE

- 15,000BTU air conditioners w/ cold air return vents
- Digital "Smart" Thermostat with dual zone capability
- Heat pump standard
- Fully programmable dual zone temperature control

## ULTIMATE KITCHEN BUNDLE

- Solid surface countertops, sink, and range cover

- Stainless steel appliances
- Range w/ sealed burners & 22" oven
- Maximized kitchen storage w/ more drawers and pantry space

## RETREAT COLLECTION

- Deluxe wood
- Cedar lined walk-in closet w/ dressing bench and storage
- Stackable washer/dryer prep (most models)
- Cloud Nine pillow top mattress

## PEAKS ALPINE PACKAGE

- Big body width with "Next Generation" construction
- Summit slides with super sized windows
- Premium Plus Performance System (Bose Solo acoustic sound system, 48" Samsung LED TV, Samsung DVD player, Harman/Kardon Bluetooth streaming system)
- Pearl Oyster exterior with dyed rear cap
- Custom painted front cap
- Hidden hinges at cabinet doors
- Pressurized metal Anderson valve control switch at water hook up
- Amish quality, hardwood fascia and bedroom headboard
- Front and rear exterior LED lighting
- Thomas Payne designer furniture
- Bottomless dining room table with two oversized and two folding chairs

## OPTIONS

- Trail air pin box
- Slide awning package
- Generator prep
- 12 cu ft refer (mandatory option)
- Cordless vacuum
- Electric fireplace
- Dual pane windows
- Winterization kit
- Canadian compliance
- RVIA seals
- Go RVIA MEP fee
- 32" Bedroom TV
- 6-Point self-leveling System
- 5500 LP generator
- Samsung residential refrigerator





# INTERIOR DECOR OPTIONS



IVY LEAGUE



FOREST FLOOR

## FULL PAINT OPTIONS

Choose between three different full paint options



■ Malibu Sand



■ Arctic Sky



■ Midnight Merlot

*\*Full paint options are available on all Alpine fifth wheels.*

# BUY LOCALLY

**PURCHASING YOUR RV LOCALLY**

It's up to you where you purchase your new Alpine, but may we suggest your local dealer? Not only does it help your local economy and provide jobs, but it will also give you an opportunity to develop a service relationship with someone that will come to know you and your coach. Congratulations on finding the best built, best equipped, best value in the industry, and happy travels!

**YOUR LOCAL DEALER:**

VISIT OUR WEBSITE TO VIEW INTERIOR PHOTOS,  
360 VIRTUAL TOURS AND MUCH MORE.



Go RVing  
Life's A Trip

# ALPINE

[www.keystonerv.com/Alpine](http://www.keystonerv.com/Alpine)

2642 Hackberry Drive  
PO Box 2000  
Goshen, IN 46527-2000  
(574) 535-2100



**Keystone RV  
Company**

[www.keystonerv.com](http://www.keystonerv.com)

Product information is as accurate as possible as of the date of publication of this brochure. Features, floor plans, and specifications are subject to change without notice. Please also consult Keystone's web site at [www.keystonerv.com](http://www.keystonerv.com) for more current product information and specifications. Tow Vehicle Disclaimer. CAUTION: Owners of Keystone recreational vehicles are solely responsible for the selection and proper use of tow vehicles. All customers should consult with a motor vehicle manufacturer or their dealer concerning the purchase and use of suitable tow vehicles for Keystone products. Keystone disclaims any liability or damages suffered as a result of the selection, operation, use or misuse of a tow vehicle. KEYSTONE'S LIMITED WARRANTY DOES NOT COVER DAMAGE TO THE RECREATIONAL VEHICLE OR THE TOW VEHICLE AS A RESULT OF THE SELECTION, OPERATION, USE OR MISUSE OF THE TOW VEHICLE.

NOVEMBER 2014