

STELLAR

Toyhaulers



RECREATIONAL VEHICLES INC.



Stellar Toyhaulers - The name says it well!

Stellar design, function and quality, built by Eclipse RV, whose experience proves a track record of credibility. Stellar Toyhaulers offers affordable floorplans, to luxury widebody floorplans, all with you in mind. Stellar offers exclusive features for unrivaled comfort and functionality. Enjoy your adventure with the Stellar Trailer and Fifth Wheel built with you in mind.



STELLAR

The Leader in Toyhaulers

Interior Fabric Options



Current

Illusion

Slate

Interior Wood Options:



Chestnut

Platinum
Birch

Walnut



Standard Features

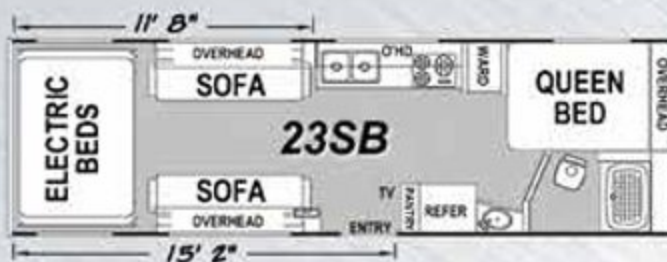
100" Body Design (N/A 25FB, 27FS)
 102" Body Design (25FB, 27SF only)
 15" Chrome Wheels
 Awning
 Cabinets Screwed Together
 Double Radius Entry Door Step
 Deluxe Futon on Electric Bed (Where Applicable)
 Electric Beds (2) (23SB, 24FB, 25FB, 27FS)
 Exterior Shower
 Floors - 2" Framed
 Fold Up Sofa's w/Skirting - Steel (2)
 Insulation: R-7
 LED Flood Lights: Door Side (2), Rear (2)
 LED Running Lights
 Lights: Porch, & Hitch
 LP Tanks - (2) 20 LBS (19SB, 1 Tank)
 Mini Blinds

Oven / Microwave / Range Hood
 Pillow Top Mattress w/Bedsread
 Powder Coated Chassis
 Pull Out Faucet (N/A on 19SB)
 Radius Entry Door
 Ramp Door - 7", Vacuum Bonded
 Refrigerator - Large, Double Door
 Rubber Roof - Seamless, 1-Piece
 Self-Adjusting Brakes
 Stabilizer Jacks - Rear (2)
 Stainless Steel Galley Sink
 Stereo AM/FM CD w/Outside Speakers
 Tie Downs
 Tinted Windows, X-Large
 Water Heater - Gas DSI, 6 Gal

Optional Upgrades

	19SB	21FS	23SB	23FiB	24FB	25FB	27FS
100 Gal Fresh Water	✓	STD	✓	STD	STD	STD	STD
A/C 15K BTU I/PD 13.5K	N/A	✓	N/A	✓	✓	✓	✓
A/C Ducting	N/A	✓	N/A	✓	✓	STD	STD
A/C Living Room - 13.5K BTU	✓	STD	✓	STD	STD	STD	STD
A/C Living Room - 15K BTU	✓	N/A	✓	N/A	N/A	N/A	N/A
Add A Wall	✓	✓	✓	✓	✓	✓	✓
Aluminum Wheels - 15"	✓	✓	✓	✓	✓	✓	✓
Aluminum Wheels - 15" Deluxe	N/A	✓	✓	✓	✓	✓	✓
Black Tank Flush	✓	✓	✓	✓	✓	✓	✓
Bunk Ladder	✓	✓	✓	✓	✓	✓	✓
Carpet Kit	✓	✓	✓	✓	✓	✓	✓
Chair - One Extra	✓	✓	N/A	✓	N/A	N/A	N/A
Chairs - 2 I/PD Sofa w/Bay Wdr	N/A	N/A	✓	N/A	✓	✓	✓
Chairs - 2 I/PD Sofa	✓	✓	N/A	✓	N/A	N/A	N/A
CSA Canada	✓	✓	✓	✓	✓	✓	✓
Dinette I/PD Sofa w/Bay Wdr	N/A	N/A	✓	N/A	✓	✓	✓
Dinette I/PD Sofa	✓	✓	N/A	✓	N/A	N/A	N/A
Drive-on Metal Wheel Well	✓	✓	✓	✓	✓	✓	✓
DVD Player	✓	✓	✓	✓	STD	✓	✓
Electric Awning w/Light	✓	✓	✓	✓	✓	✓	✓
Electric Bed (One)	✓	✓	N/A	✓	N/A	N/A	N/A
Electric Bed / Dinette	N/A	N/A	✓	N/A	✓	✓	✓
Exterior TV Bracket & Hookups	✓	✓	✓	✓	✓	✓	✓
Front Power Jack	✓	✓	✓	✓	✓	✓	✓
Front & Rear Fiberglass	✓	✓	✓	✓	✓	✓	✓
Fuel Station - 36 Gal	✓	✓	✓	✓	STD	✓	✓
Generator - 4.0 ONAN w/Transfer Switch	✓	✓	✓	✓	STD	✓	✓
Generator - Portable	✓	N/A	✓	N/A	N/A	N/A	N/A
Heated Enclosed Tanks	✓	✓	✓	✓	✓	✓	✓
LED Lights - Interior	✓	✓	✓	✓	✓	✓	✓
LED Light Bar	✓	✓	✓	✓	✓	✓	✓
LP Tanks - Dual 30 LBS	✓	✓	✓	✓	✓	✓	✓
Medicine Cabinet - Wood/Mirror	✓	N/A	✓	N/A	✓	✓	N/A
Medicine Cabinet - Plastic/Mirror	N/A	✓	N/A	✓	N/A	N/A	✓
Pleated Shades	✓	✓	✓	✓	✓	✓	✓
Porcelain Toilet	✓	✓	✓	✓	✓	✓	✓
Ramp Door Patio Fence	✓	✓	✓	✓	✓	✓	✓
Skylight Over Tub	N/A	✓	N/A	✓	✓	✓	✓
Slide-Out Living Room (Doorside)	N/A	N/A	N/A	N/A	N/A	N/A	✓
Solar Panel - 10 Watt	✓	✓	✓	✓	✓	✓	✓
Solar Panel - 160 Watt	✓	✓	✓	✓	✓	✓	✓
Spare Tire & Carrier	✓	✓	✓	✓	✓	✓	✓
Stabilizer Jacks - Front	✓	✓	✓	✓	✓	✓	✓
Stell-A-Lounge	N/A	N/A	✓	N/A	✓	✓	✓
Stell-A-Lounge - High Clearance	N/A	N/A	✓	N/A	✓	✓	✓
Thermo Pane Windows	✓	✓	✓	✓	✓	✓	✓
Tie-Downs - 2 Extra	✓	✓	✓	✓	✓	✓	✓
TV Antenna	✓	✓	✓	✓	STD	✓	✓
TV Bedroom	✓	✓	✓	✓	✓	✓	✓
TV Living Room	✓	✓	✓	✓	STD	✓	✓
TV Living Room, X-Large	N/A	✓	✓	✓	✓	✓	✓
USB Charger	✓	✓	✓	✓	✓	✓	✓
Walk on Roof w/Folding Ladder	✓	✓	✓	✓	✓	✓	✓
Winterize	✓	✓	✓	✓	✓	✓	✓

Available Floorplans



Ultra
Lite

STELLAR

Optional Upgrades

	18CBG	19SBG	21FSG	23SCG	23FiBG	24FBG	25FBG	27FSG
100 Gal Fresh Water	N/A	✓	STD	✓	STD	STD	STD	STD
A/C Living Room - 13.5K BTU	✓	✓	STD	✓	STD	STD	STD	STD
A/C Living Room - 15K BTU	✓	✓	N/A	✓	N/A	N/A	N/A	N/A
A/C 15K BTU IPO 13.5K	N/A	N/A	✓	N/A	✓	✓	✓	✓
A/C Ducting	N/A	N/A	✓	N/A	✓	✓	STD	STD
Add A Wall	✓	✓	✓	✓	✓	✓	✓	✓
Aluminum Wheels - 15"	✓	✓	✓	✓	✓	✓	✓	✓
Aluminum Wheels - 15" Deluxe	N/A	N/A	✓	✓	✓	✓	✓	✓
Black Tank Flush	✓	✓	✓	✓	✓	✓	✓	✓
Bunk Ladder	✓	✓	✓	✓	✓	✓	✓	✓
Carpet Kit	✓	✓	✓	✓	✓	✓	✓	✓
Chair - One Extra	N/A	✓	✓	N/A	✓	N/A	N/A	N/A
Chairs - 2 IPO Sofa w/ Bay Wdr	✓	N/A	N/A	✓	N/A	✓	✓	✓
Chairs - 2 IPO Sofa	N/A	✓	✓	N/A	✓	N/A	N/A	N/A
CSA Canada	✓	✓	✓	✓	✓	✓	✓	✓
Deluxe Fender Skirts	✓	✓	✓	✓	✓	✓	✓	✓
Dinette IPO Sofa w/ Bay Wdr	✓	N/A	N/A	✓	N/A	✓	✓	✓
Dinette IPO Sofa	N/A	✓	✓	N/A	✓	N/A	N/A	N/A
Drive-on Metal Wheel Well	✓	✓	✓	✓	✓	✓	✓	✓
DVD Player	✓	✓	✓	✓	✓	STD	✓	✓
Electric Awning w/ Light	✓	✓	✓	✓	✓	✓	✓	✓
Electric Bed (One)	✓	✓	✓	N/A	✓	N/A	N/A	N/A
Electric Bed (2nd)	✓	N/A	N/A	N/A	N/A	N/A	N/A	N/A
Electric Bed / Dinette	N/A	N/A	N/A	✓	N/A	✓	✓	✓
Exterior TV Bracket & Hookups	✓	✓	✓	✓	✓	✓	✓	✓
Front Power Jack	✓	✓	✓	✓	✓	✓	✓	✓
Fuel Station - 36 Gal	✓	✓	✓	✓	✓	STD	✓	✓
Generator - 4.0 ONAN w/ Transfer Switch	N/A	✓	✓	✓	✓	STD	✓	✓
Generator - Portable	✓	✓	N/A	✓	N/A	N/A	N/A	N/A
Gray Exterior	✓	✓	✓	✓	✓	✓	✓	✓
Heated Enclosed Tanks	✓	✓	✓	✓	✓	✓	✓	✓
LED Lights - Interior	✓	✓	✓	✓	✓	✓	✓	✓
LED Light Bar	✓	✓	✓	✓	✓	✓	✓	✓
LP Tanks - Dual 30 LBS	✓	✓	✓	✓	✓	✓	✓	✓
Medicine Cabinet - Wood/Mirror	N/A	✓	N/A	✓	N/A	✓	✓	N/A
Medicine Cabinet - Plastic/Mirror	N/A	N/A	✓	N/A	✓	N/A	N/A	✓
Pleated Shades	✓	✓	✓	✓	✓	✓	✓	✓
Ramp Door Patio Fence	✓	✓	✓	✓	✓	✓	✓	✓
Skylight Over Tub	N/A	N/A	✓	N/A	✓	✓	✓	✓
Slide-Out Living Room (Doorside)	N/A	N/A	N/A	N/A	N/A	N/A	N/A	✓
Solar Panel - 10 Watt	✓	✓	✓	✓	✓	✓	✓	✓
Solar Panel - 160 Watt	✓	✓	✓	✓	✓	✓	✓	✓
Spare Tire & Carrier	✓	✓	✓	✓	✓	✓	✓	✓
Stabilizer Jacks - Front	✓	✓	✓	✓	✓	✓	✓	✓
Stell-A-Lounge	N/A	N/A	N/A	✓	N/A	✓	✓	✓
Stell-A-Lounge - High Clearance	N/A	N/A	N/A	✓	N/A	✓	✓	✓
Thermo Pane Windows	✓	✓	✓	✓	✓	✓	✓	✓
Tie-Downs - 2 Extra	✓	✓	✓	✓	✓	✓	✓	✓
TV Antenna	✓	✓	✓	✓	✓	STD	✓	✓
TV Bedroom	N/A	✓	✓	✓	✓	✓	✓	✓
TV Living Room	✓	✓	✓	✓	✓	STD	✓	✓
TV Living Room - X-Large	N/A	N/A	✓	✓	✓	✓	✓	✓
USB Charger	✓	✓	✓	✓	✓	✓	✓	✓
Walk on Roof w/ Folding Ladder	✓	✓	✓	✓	✓	✓	✓	✓
Winterize	✓	✓	✓	✓	✓	✓	✓	✓



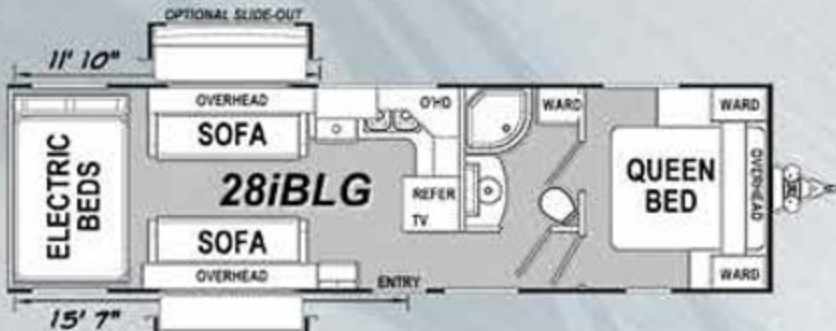
Available Floorplans



Standard Features

- 100" Body Design (All Except 25SBG, 27FSG)
- 102" Body Design (25SBG, 27FSG only)
- 15" Chrome Wheels
- A/C 13.5K BTU (N/A 18CBG, 19SBG, 23SCG)
- Awning
- Cabinets Screwed Together
- Deluxe Futon on Electric Bed (Where Applicable)
- Double Radius Entry Door Step
- Electric Beds (2) (23SCG, 24FBG, 25SBG, 27FSG)
- Exterior Shower
- Fiberglass-Laminated, Aluminum-Framed Walls
- Floors - Aluminum Framed, Vacuum Bonded
- Fold Up Sofa's w/ Skirting - Steel (2)
- Insulation: R-22 / R-11 EPS Foam
- LED Flood Lights: Door Side (2), Rear (2)
- LED Running Lights
- Lights: Porch & Hitch

- LP Tanks - (2) 20 LBS (18CBG, 19SBG 1 Tank)
- Mini Blinds
- Oven / Microwave / Range Hood
- Pillow Top Mattress w/ Bedspring (N/A on 18CBG)
- Powder Coated Chassis
- Pull Out Faucet (N/A on 18CBG, 19SBG)
- Radius Entry Door
- Ramp Door - 7', Vacuum Bonded
- Refrigerator - Large, Double Door
- Rubber Roof - Seamless, 1-Piece
- Self-Adjusting Brakes
- Stabilizer Jacks - Rear (2)
- Stainless Steel Galley Sink
- Stereo AM/FM CD w/ Outside Speakers
- Tie Downs
- Tinted Windows, X-Large
- Water Heater - Gas DSI, 6 Gal



Available Floorplans

Standard Features

- 102" Wide Body Design
- 15" Aluminum Wheels
- 6,000 LB Axles w/Grease Zerk Fittings
- A/C 13.5K BTU
- Awning
- Carpet Kit
- Deluxe Aluminum Fender Skirts
- Double Radius Entry Door Step
- Fiberglass-Laminated, Aluminum-Framed Walls
- Floors - Aluminum Framed, Vacuum Bonded
- Folding Entry Door Assist Handle
- Fold-Up Sofa's w/Skirting (2)
- Full Weld Z Outriggers
- Insulation: R-22 / R-11 EPS Foam
- Key Hook / Cork Board
- LED Flood Lights: Door Side (2), Rear (2)
- LED Interior Lights
- LED Light Bar
- LED Running Lights
- Lights: Step, Hitch
- LP Tanks - Dual 30 LBS
- Microwave w/Range Hood, Oven
- Pillow Top Mattress w/Bedsread, Shams
- Pleated Shades
- Powder Coated Chassis
- Pressure Washer
- Radius Entry Door
- Ramp Door - 7', Vacuum Bonded
- Refrigerator - Large, Double Door
- Rubber Roof - Seamless, 1-Piece
- Self-Adjusting Brakes
- Stabilizer Jacks - High Clearance (4)
- Stainless Steel Galley
- Sink w/Pull-Out Faucet
- Stereo AM/FM CD/DVD w/Outside Speakers
- Tie Downs
- Tinted Windows
- TV Antenna w/Cable Hook-Up
- TV Living Room
- USB Charger
- Water Heater - Gas DSI, 6 Gal
- Water Purification System

Optional Upgrades

	27DBLG	28QBG	28iBLG	32iBLG	32KSG
150 Gal Fresh Water	✓	✓	✓	✓	✓
50 Amp Service	N/A	N/A	✓	✓	✓
A/C 15K BTU IPO 13.5K *	✓	✓	✓	✓	✓
A/C Bedroom - 13.5K BTU	N/A	N/A	✓	✓	✓
Add A Wall *	✓	✓	✓	✓	✓
Aluminum Wheels - 15" Deluxe *	✓	✓	✓	✓	✓
Aluminum Wheels - 16" Deluxe	✓	✓	✓	✓	N/A
Black Tank Flush *	✓	✓	✓	✓	✓
Carpet Kit - Upgraded	✓	✓	✓	✓	✓
Ceiling Fan	✓	✓	✓	✓	✓
Chairs - 2 IPO Sofa w/Bay Wide	✓	✓	✓	✓	✓
Chairs - Two Extra	N/A	N/A	N/A	✓	N/A
CSA Canada	✓	✓	✓	✓	✓
Dinette IPO Sofa w/Bay Wide	✓	✓	✓	✓	N/A
Drive-on Metal Wheel Well	✓	✓	✓	✓	N/A
Electric Awning w/Light *	✓	✓	✓	✓	✓
Electric Bed / Dinette	✓	✓	✓	✓	✓
Electric Beds (2) w/Bunk Ladder	✓	✓	✓	✓	✓
Exterior TV Bracket & Hookups	✓	✓	✓	✓	✓
Frameless Windows	✓	✓	✓	✓	✓
Front Power Jack *	✓	✓	✓	✓	✓
Fuel Station - 36 Gal *	✓	✓	✓	✓	✓
Fuel Station - 51 Gal Split	✓	✓	✓	✓	✓
Generator - 4.0 ONAN w/Transfer Switch *	✓	✓	✓	✓	✓
Generator - 5.5 ONAN w/Transfer Switch	N/A	N/A	✓	✓	✓
Gray Exterior	✓	✓	✓	✓	✓
Heated Enclosed Tanks	✓	✓	✓	✓	✓
Kicker Stereo System w/Touchscreen *	✓	✓	✓	✓	✓
Ramp Door Patio Fence	✓	✓	✓	✓	✓
Rear Table & Legs	N/A	N/A	N/A	✓	✓
Refrigerator - X-Large	✓	N/A	✓	✓	✓
Skylight Over Shower	✓	✓	✓	✓	✓
Slide-Out Living Room (Doorside)	N/A	N/A	✓	✓	✓
Slide-Out Living Room (Roadside)	✓	✓	✓	✓	STD
Sliding Glass Tub Door	N/A	✓	N/A	N/A	N/A
Solar Panel - 10 Watt	✓	✓	✓	✓	✓
Solar Panel - 150 Watt	✓	✓	✓	✓	✓
Solid Surface Galley Top w/Covers *	✓	✓	✓	✓	✓
Spare Tire & Carrier *	✓	✓	✓	✓	✓
Stell-A-Lounge *	✓	✓	✓	✓	✓
Stell-A-Lounge - High Clearance	✓	✓	✓	✓	✓
Thermo Pane Windows	✓	✓	✓	✓	✓
Tie-Downs - 2 Extra	✓	✓	✓	✓	N/A
TV Bedroom *	✓	✓	✓	✓	✓
TV Living Room - X-Large *	✓	✓	✓	✓	✓
TV Living Room - 2X-Large	N/A	N/A	N/A	N/A	✓
TV Living Room - 3X-Large	N/A	N/A	N/A	N/A	✓
Walk on Roof w/Folding Ladder	✓	✓	✓	✓	✓
Water Heater - Gas DSI / Electric, 10 Gal	✓	✓	✓	✓	✓
Winterize	✓	✓	✓	✓	✓
Abyss Package	<i>Included Items Denoted with *</i>				
Attitude Premier Package *	Custom LP Tank Cover, Deluxe Aluminum Rims, Electric Tongue Jack, Front/Rear Fiberglass Caps				
Centurion Package	Glass Lazy Boy w/Deluxe Facet, Solid Surface Lazy Top (Must Include Solid Surface Galley Opt) - Black or Brown Countertops Available				



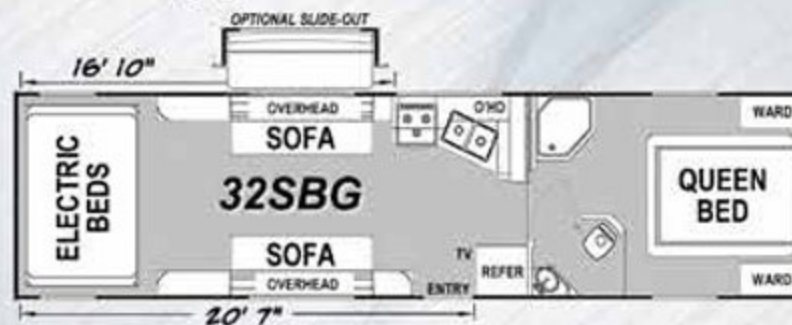
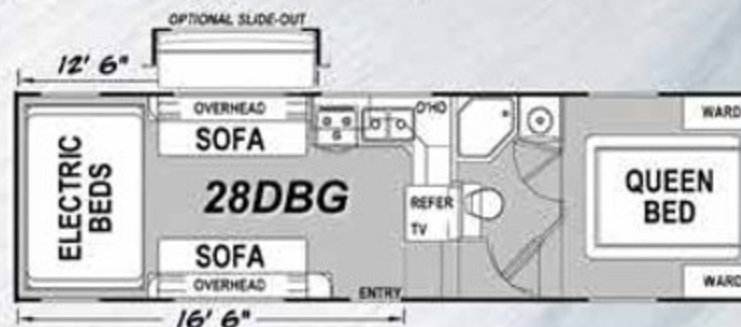
Wide Lite 5th Wheels **STELLAR**



Optional Upgrades

	28SBG	28DBG	32SBG	32DBG
150 Gallon Fresh Water	✓	✓	✓	✓
50 Amp Service	✓	✓	✓	✓
A/C 15K BTU IPO 13.5K	✓	✓	✓	✓
A/C Bedroom - 13.5K BTU	✓	✓	✓	✓
Add A Wall	✓	✓	✓	✓
Black Tank Flush	✓	✓	✓	✓
Carpet Kit - Upgraded	✓	✓	✓	✓
Ceiling Fan	✓	✓	✓	✓
Central Vacuum System	✓	✓	✓	✓
Chairs - 2 IPO Sofa w/Bay Wdw	✓	✓	✓	✓
CSA Canada	✓	✓	✓	✓
Dinette IPO Sofa w/Bay Wdw	✓	✓	✓	✓
Drive-on Metal Wheel Well	✓	✓	✓	✓
Electric Awning w/Light	✓	✓	✓	✓
Electric Bed / Dinette	✓	✓	✓	✓
Electric Beds (2) w/Bunk Ladder	✓	✓	✓	✓
Exterior TV Bracket & Hookups	✓	✓	✓	✓
Fuel Station - 36 Gal	✓	✓	✓	✓
Fuel Station - 51 Gal Split	✓	✓	✓	✓
Frameless Windows	✓	✓	✓	✓
Generator - 4.0 OHAN w/Transfer Switch	✓	✓	✓	✓
Generator - 5.5 OHAN w/Transfer Switch	✓	✓	✓	✓
Gray Exterior	✓	✓	✓	✓
Heated Enclosed Tanks	✓	✓	✓	✓
Kicker Stereo System w/Touchscreen	✓	✓	✓	✓
Ramp Door Patio Fence	✓	✓	✓	✓
Rear Fiberglass Cap	✓	✓	✓	✓
Rear Table & Legs	N/A	N/A	✓	✓
Refrigerator - X-Large	✓	✓	✓	✓
Skylight over Shower	✓	✓	✓	✓
Slide-Out Living Room (Roadside)	✓	✓	✓	✓
Slide-Out Wardrobe	N/A	✓	N/A	✓
Solar Panel - 10 Watt	✓	✓	✓	✓
Solar Panel - 160 Watt	✓	✓	✓	✓
Solid Surface Galley Top w/Covers	✓	✓	✓	✓
Spare Tire & Carrier	✓	✓	✓	✓
Stell-A-Lounge	✓	✓	✓	✓
Stell-A-Lounge - High Clearance	✓	✓	✓	✓
Thermo Pane Windows	✓	✓	✓	✓
Tie-Downs - 2 Extra	✓	✓	✓	✓
TV Bedroom	✓	✓	✓	✓
TV Living Room - X-Large	✓	✓	✓	✓
Walk on Roof w/Folding Ladder	✓	✓	✓	✓
Water Heater - Gas DSI / Electric, 6 Gal	✓	✓	✓	✓
Water Heater - Gas DSI, 10 Gal	✓	✓	✓	✓
Winterize	✓	✓	✓	✓

Available Floorplans



Standard Features

- 102" Wide Body Design
- 16" Deluxe Aluminum Wheels
- 6,000 Lb Axles w/Grease Zerk Fittings
- A/C 13.5K BTU
- Awning
- Carpet Kit
- Deluxe Aluminum Fender Skirts
- Fiberglass-Laminated, Aluminum-Framed Walls
- Floors - Aluminum Framed, Vacuum Bonded
- Fold-Up Sofa's w/Skirting (2)
- Folding Entry Door Assist Handle
- Front Fiberglass Cap
- Furnace - 30K BTU
- Insulation: R-22 / R-11 EPS Foam
- Key Hook / Cork Board
- LED Flood Lights: Door Side (2), Rear (2)
- LED Interior Lights
- LED Light Bar
- LED Running Lights
- Lights: Step, Hitch
- LP Tanks - Dual 30 LBS
- Medicine Cabinet w/Crown Molding
- Microwave w/Range Hood, Oven
- Pillow Top Mattress w/Bedsread, Shams
- Pleated Shades
- Powder Coated Chassis
- Pressure Washer
- Refrigerator - Large, Double Door
- Radius Entry Door
- Ramp Door - 7', Vacuum Bonded
- Rubber Roof - Seamless, 1-Piece
- Self-Adjusting Brakes
- Stabilizer Jacks - Rear, High Clearance (2)
- Stainless Steel Galley Sink w/Pull-Out Faucet
- Stereo AM/FM CD/DVD w/Outside Speakers
- Tie Downs
- Tinted Windows
- Triple Radius Entry Door Step
- TV Antenna w/Cable Hook-Up
- TV Living Room
- USB Charger
- Water Heater - Gas DSI, 6 Gal
- Water Purification System

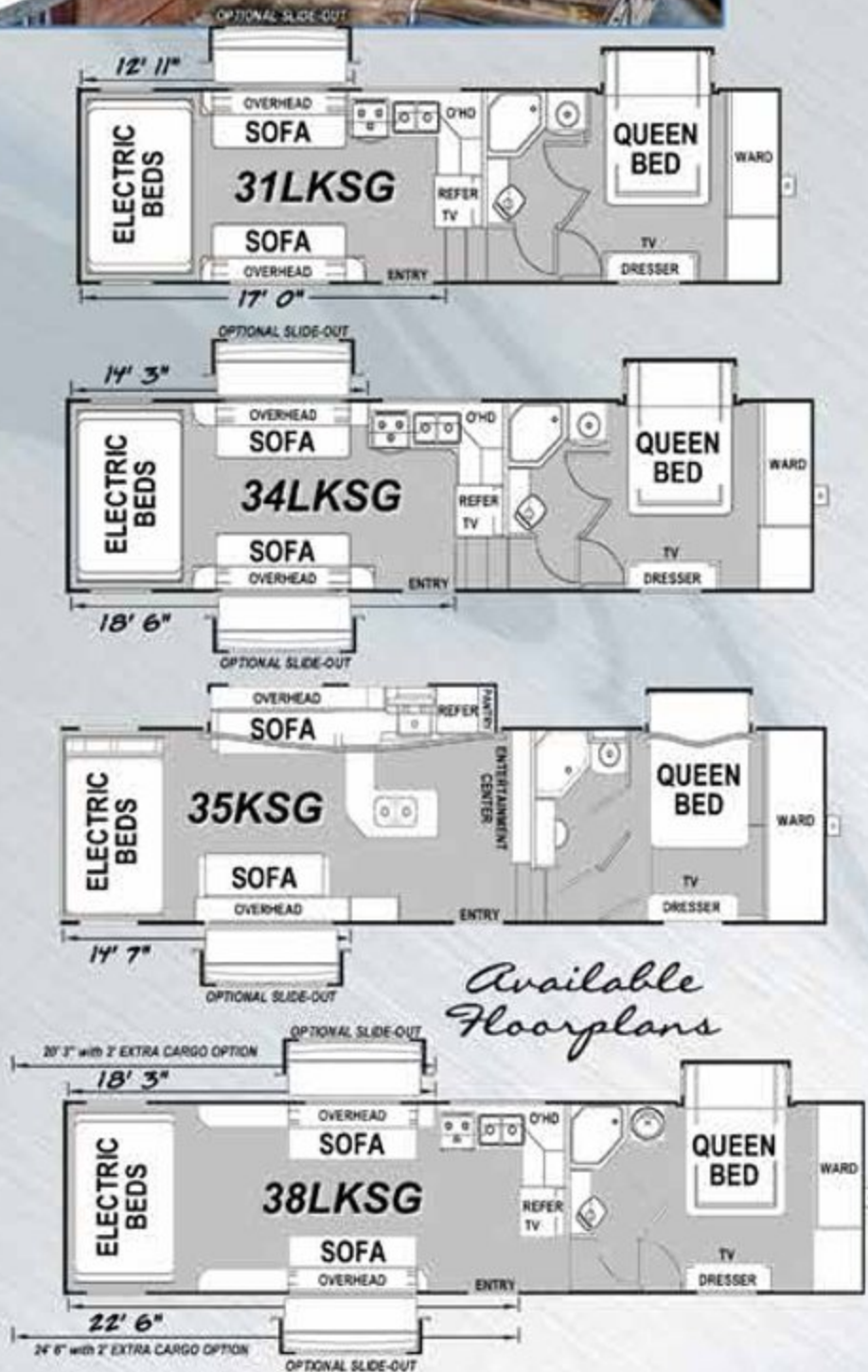


Standard Features

- 102" Wide Body Design
- 16" Deluxe Aluminum Wheels
- 6,000 Lb Axles W/ Grease Zerk Fittings
- A/C 13.5K BTU
- Awning
- Carpet Kit
- Ceiling Fan
- Deluxe Aluminum Fender Skirts
- LP Tanks - Dual 30 LBS
- Fiberglass-Laminated, Aluminum-Framed Walls
- Floors - Aluminum Framed, Vacuum Bonded
- Folding Entry Door Assist Handle
- Fold-Up Sofa's w/Skirting (2)
- Front & Rear Fiberglass Caps
- Full Turning Radius
- Furnace - 30K BTU
- Glass Enclosed Shower
- In-Floor Storage
- Key Hook / Cork Board
- LED Flood Lights: Door Side (2), Rear (2), Road Side (2)
- LED Interior Lights
- LED Light Bar
- LED Running Lights
- Lights: Step / Hitch
- Medicine Cabinet w/Crown Molding
- Microwave w/Range Hood, Oven
- Pillow Top Mattress w/Bedsread
- Pleated Shades
- Powder Coated Chassis, Drop Down Radius Entry Door
- Ramp Door - 7.5', Vacuum Bonded
- Refrigerator - Large, Double Door
- Self-Adjusting Brakes
- Stabilizer Jacks - Rear, High Clearance (2)
- Stainless Steel Galley Sink w/Pull Out Faucet
- Stereo AM/FM CD/DVD w/Outside Speakers
- Tie Downs
- Tinted Windows, X-Large
- Triple Radius Entry Door Step
- TV Antenna w/Cable Hook-Up
- TV Living Room
- USB Charger
- Water Heater - Gas DSI, 6 Gal
- Water Purification System

Optional Upgrades

	31LKSG	34LKSG	35KSG	38LKSG
150 Gallon Fresh Water	✓	✓	✓	✓
2' of Extra Cargo	N/A	N/A	N/A	✓
A/C 15K BTU IPO 13.5K *	✓	✓	✓	✓
A/C Bedroom - 13.5K BTU *	✓	✓	✓	✓
Add A Wall *	✓	✓	✓	✓
Black Tank Flush *	✓	✓	✓	✓
Carpet Kit - Upgraded	✓	✓	✓	✓
Central Vacuum System	✓	✓	✓	✓
Chair - One Extra	N/A	✓	N/A	✓
Chairs - 2 Extra	N/A	N/A	N/A	✓
Chairs - 2 IPO Sofa w/Bay Widw	✓	✓	✓	✓
CSA Canada	✓	✓	✓	✓
Dinette IPO Sofa w/Bay Widw	✓	✓	N/A	✓
Double Stell-A-Lounge *	✓	✓	✓	✓
Electric Awning w/Light *	✓	✓	✓	✓
Electric Beds (2) w/Bunk Ladder, Hi-Clear.	✓	✓	✓	✓
Electric Bed / Dinette	✓	✓	✓	✓
Electric Ramp Door Lift	✓	✓	✓	✓
Exterior TV Bracket & Hookups	✓	✓	✓	✓
Folding Ladder *	✓	✓	✓	✓
Frameless Windows	✓	✓	✓	✓
Fuel Station - 36 Gal *	✓	✓	✓	✓
Fuel Station - 51 Gal Split	✓	✓	✓	✓
Generator - 5.5 ONAN w/Transfer Switch. *	✓	✓	✓	✓
Gray Exterior	✓	✓	✓	✓
Heated Enclosed Tanks	✓	✓	✓	✓
Kicker Stereo System w/Touchscreen *	✓	✓	✓	✓
Ramp Door Patio Fence	✓	✓	✓	✓
Rear Table & Legs	N/A	✓	✓	✓
Refrigerator - X-Large	✓	✓	✓	✓
Slide-Out Living Room (Doorside)	N/A	✓	✓	✓
Slide-Out Living Room (Roadside)	✓	✓	STD	✓
Solar Panel - 10 Watt	✓	✓	✓	✓
Solar Panel - 160 Watt	✓	✓	✓	✓
Solid Surface Galley Top w/Covers *	✓	✓	✓	✓
Spare Tire & Carrier *	✓	✓	✓	✓
Thermo Pane Windows	✓	✓	✓	✓
Tie-Downs - 2 Extra	✓	✓	N/A	✓
TV Bedroom - X-Large *	✓	✓	✓	✓
TV Living Room - X-Large *	✓	✓	✓	✓
TV Living Room - 2X-Large	✓	✓	✓	✓
TV Living Room - 3X-Large	N/A	N/A	✓	N/A
Water Heater - Gas DSI / Electric, 6 Gal	✓	✓	✓	✓
Water Heater - Gas DSI, 10 Gal	✓	✓	✓	✓
Water Heater - Gas DSI / Electric, 10 Gal	✓	✓	✓	✓
Winterize	✓	✓	✓	✓
Abyss Package	<i>Included Items Denoted with *</i>			
Centurion Package	Glass Lavg Bowl w/Deluxe Faucet, Solid Surface Lavg Top (Must Include Solid Surface Galley Opt) - Black or Brown Countertops Available			



Optional Upgrades

	33SSG	40TXSG
150 Gallon Fresh Water	✓	✓
4' of Extra Cargo/Garage	✓	N/A
Carpet Kit - Upgraded	✓	✓
Chairs - 2 Extra	✓	✓
CSA Canada	✓	✓
Electric Bed / Dinette	✓	✓
Electric Fireplace	✓	✓
Electric Ramp Door Lift	✓	✓
Frameless Windows	✓	✓
Gray Exterior	✓	✓
Half Bath (Only w/Extra Cargo Opt)	✓	✓
Loft Bed (Only w/Extra Cargo Opt)	✓	STD
Ramp Door Patio Fence	✓	✓
Solar Panel - 10 Watt	✓	✓
Solar Panel - 160 Watt	✓	✓
Thermo Pane Windows	✓	✓
Tie-Downs - 2 Extra	N/A	✓
TV Bedroom - X-Large	✓	✓
TV Rear - X-Large (Inside/Outside Bracket)	✓	✓
Washer/Dryer Ready	✓	✓
Water Heater - Gas DSI / Electric, 10 Gal	✓	✓
Winterize	✓	✓
Centurion Package	<i>Glass Lav Bowl w/Deluxe Faucet, Solid Surface Lav Top (Must Include Solid Surface Galley Opt) - Black or Brown Countertops Available</i>	

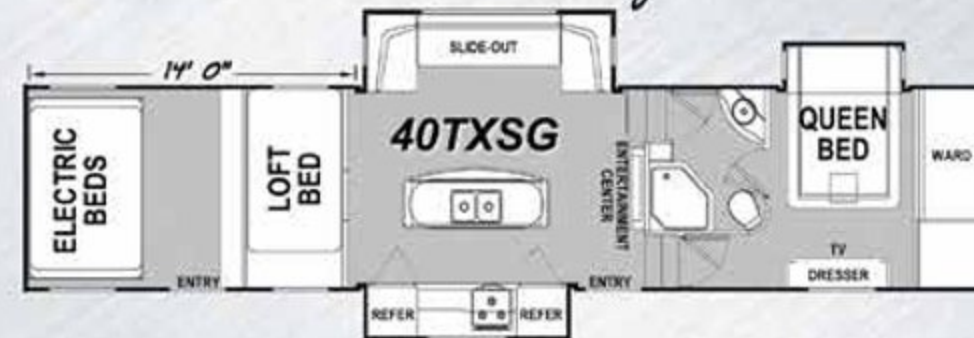


Standard Features

- | | | |
|--|---|---|
| 102" Wide Body Design | Folding Side Ladder | Radius Entry Door |
| 16" Deluxe Aluminum Rims | Fiberglass Front & Rear Caps | Ramp Door - 7.5', Vacuum Bonded |
| 50 AMP Service | Front Cap Lights | Refrigerator - X-Large, Double Door |
| A/C Bedroom - 13.5K BTU | Fuel Station - 51 Gal Split | Rubber Roof - Seamless, 1-Piece |
| A/C Living Room - 15K BTU | Furnace - 30K BTU | Self-Adjusting Brakes |
| Add-A-Wall | Generator - 5.5 ONAN w/Transfer Switch | Shower - Glass Enclosed |
| Black Tank Flush | Heavy Duty Flooring in Garage | Sliding Glass Door (40TXSG only) |
| Built-In Air Compressor | In-Floor Storage | Solid Surface Galley Top w/Covers |
| Carpet Kit | Interior Grab Handle - Wood | Spare Tire w/Carrier |
| Central Vacuum System | Key Hook / Cork Board / Mag Rack | Stabilizer Jacks - Electric, Front/Rear |
| Decorative Slide Treatments | Kicker Stereo System w/ Touch Screen | Stell-A-Lounge w/Table |
| Deluxe Aluminum Fender Skirts | LED Flood Lights DS (2), RS (2), Rear (2) | Storage - Oversized w/Slam Latches |
| Deluxe Futon on Electric Bed | LED Lights - Interior | Tie Downs |
| Double J Sofa w/ Dual Recliners (40TXSG) | LED Light Bar | Tinted Windows |
| Double J Sofa w/ Single Recliner (33SSG) | LED Running Lights | Triple Radius Entry Door Step |
| Dual Windows Cargo Area | Lights: Step, & Hitch | TV Antenna w/ Cable Hook-Up |
| Electric Awning w/ Light | LP Tanks - Dual 30 LBS | TV Living Room - 3X-Large w/Remote |
| Electric Bed - 2nd Gen Queen Size | Medicine Cabinet w/Crown Molding | TV Swing Out Bracket - Living Room |
| Enclosed Under Belly | Microwave w/Range Hood, Oven | USB Charger |
| Entry Swing-Out Assist Handle | Outside Speakers | Walk On Roof |
| Exterior Shower | Pleated Shades | Water Heater - Gas DSI, 10 Gal |
| Floors - Aluminum Framed, Vacuum Bonded | Powder Coated Chassis, Drop Down | Water Purification System |



Available Floorplans



BUY LOCALLY

Eclipse Recreational Vehicles Inc. strongly encourages our retail customer to purchase from their local dealership whenever possible.



Ramp Door
Patio Fence
Option



Gray Exterior
Option Shown



Optional
5.5 ONAN
Generator



Optional
Fuel Station



Optional
Drive-on Metal
Wheel Well

- ① Our Dealers are as a rule, independently owned and operated businesses. Outside of those customers they personally sold products to, they are not contractually obligated to perform warranty service of Eclipse products that were purchased elsewhere. There may be an occasion that you would be required to return to the point of purchase to satisfy warranty requirements.
- ① Although many dealerships will eventually service products not purchased at their place of business, they will usually take care of their customers and other Eclipse customers who are traveling away from their local dealer as they would their own.
- ① Local purchases allow a customer to establish a relationship with a dealer close to home. This relationship provides the customer with a convenient location for service and support from a local dealer.
- ① The opportunity for a thorough inspection (PDI) and product orientation is an additional benefit of buying from your local dealer, further providing the opportunity for refresher courses and the ability to get questions answered much more conveniently.
- ① For our Canadian customer, there are also requirements which must be met to bring an RV purchased out of the country to their home. Although not insurmountable, these requirements may involve such things as additional inspections and verifications. Your local Canadian Dealer is a professional at meeting these requirements.

Eclipse Recreational Vehicles, Inc.'s goal is for all RV Owners to fully enjoy their RV experience. In light of this goal, and considering the advantages of buying local, we encourage you to be thorough when determining what product to purchase and which dealer to purchase it from, as both are key to your ultimate satisfaction and the realization of our dreams.

Metal	GVWR	Dry Weight	Hitch Weight	Axle Weight	Exterior Height	O.A. Length	Fresh Water	Gray Water	Black Water	LP Capacity
19SB	7500	5540	660	4880	11'-6"	26'-1"	54 Gal.	50 Gal.	50 Gal.	20#
21FS	9900	6550	880	5670	11'-8"	27'-9"	104 Gal.	50 Gal.	50 Gal.	40#
23SB	9900	6575	720	5855	11'-6"	30'-1"	54 Gal.	50 Gal.	50 Gal.	40#
23FiB	9900	6428	913	5515	11'-8"	29'-3"	104 Gal.	50 Gal.	50 Gal.	40#
24FB	9900	6700	1020	5680	11'-8"	29'-3"	104 Gal.	50 Gal.	50 Gal.	40#
25FB	9900	TBD	TBD	TBD	11'-8"	30'-8"	104 Gal.	50 Gal.	50 Gal.	40#
27FS	9900	6940	915	6025	11'-8"	31'-10"	104 Gal.	50 Gal.	50 Gal.	40#

Pro-Lite

18CBG	7500	4900	590	4310	11'-6"	23'-9"	54 Gal.	50 Gal.	50 Gal.	20#
19SBG	7500	5240	680	4560	11'-6"	26'-1"	54 Gal.	50 Gal.	50 Gal.	20#
21FSG	9900	6120	890	5230	11'-8"	27'-9"	104 Gal.	50 Gal.	50 Gal.	40#
23SCG	9900	5960	690	5270	11'-6"	30'-1"	54 Gal.	50 Gal.	50 Gal.	40#
23FiBG	9900	6140	970	5170	11'-8"	29'-3"	104 Gal.	50 Gal.	50 Gal.	40#
24FBG	9900	6450	1040	5410	11'-8"	29'-3"	104 Gal.	50 Gal.	50 Gal.	40#
25FBG	9900	6760	1080	5680	11'-8"	30'-8"	104 Gal.	50 Gal.	50 Gal.	40#
27FSG	9900	6808	985	5823	11'-8"	31'-10"	104 Gal.	50 Gal.	50 Gal.	40#

Wide Lite

27DBLG	9900	7230	1025	6205	11'-8"	32'-2"	104 Gal.	50 Gal.	50 Gal.	60#
28QBG	9900	7310	1180	6130	11'-8"	32'-0"	104 Gal.	50 Gal.	50 Gal.	60#
28iBLG	9900	7280	1060	6220	11'-8"	33'-4"	104 Gal.	50 Gal.	50 Gal.	60#
32iBLG	13000	8495	1390	7105	11'-8"	37'-4"	104 Gal.	50 Gal.	50 Gal.	60#
32KSG	13500	9390	1470	7920	12'-1"	37'-4"	104 Gal.	50 Gal.	50 Gal.	60#

Wide Lite sth Wheel

28SBG	11900	8915	2015	6900	12'-9"	31'-6"	126 Gal.	40 Gal.	40 Gal.	60#
28DBG	11900	8755	2035	6720	12'-9"	31'-6"	126 Gal.	40 Gal.	40 Gal.	60#
32SBG	13500	9385	2255	7130	12'-9"	35'-6"	126 Gal.	40 Gal.	40 Gal.	60#
32DBG	13500	9180	2160	7020	12'-9"	35'-6"	126 Gal.	40 Gal.	40 Gal.	60#

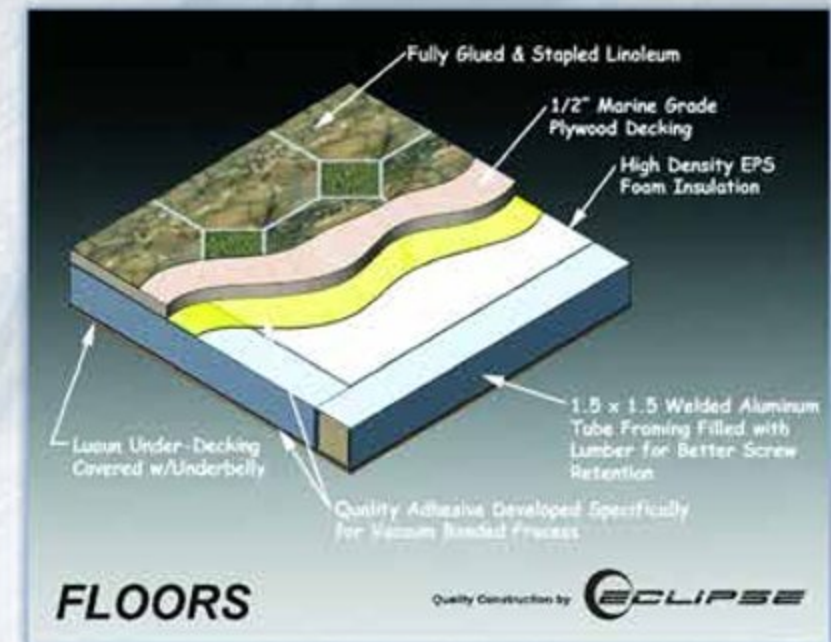
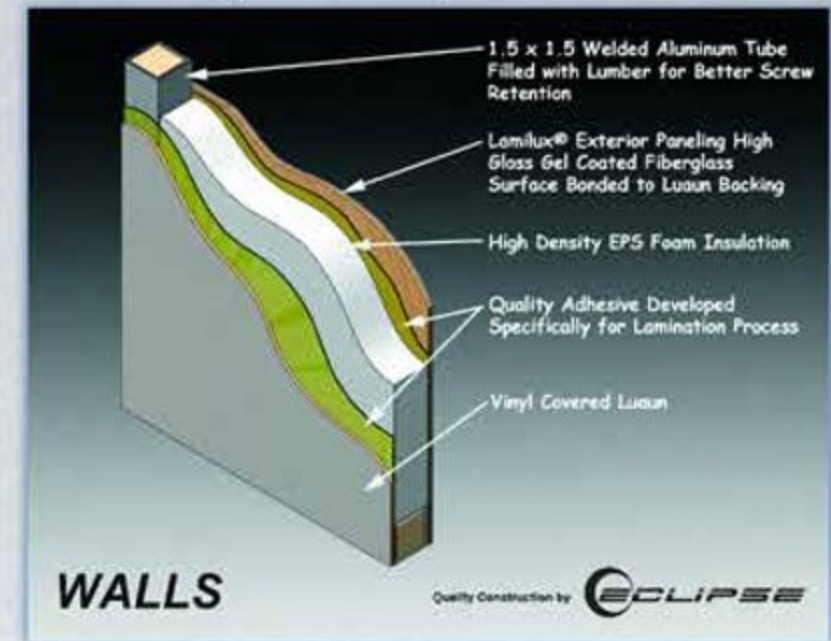
Wide Body sth Wheel

31LKSG	14000	10490	2810	7680	13'	34'-11"	126 Gal.	50 Gal.	40 Gal.	60#
34LKSG	15000	11280	3590	7690	13'	36'-5"	126 Gal.	50 Gal.	40 Gal.	60#
35KSG	16500	12540	3260	9280	13'	39'-8"	126 Gal.	50 Gal.	40 Gal.	60#
38LKSG	17000	11785	3790	7960	13'	40'-5"	126 Gal.	50 Gal.	40 Gal.	60#

Garage sth Wheel

33SSG	16500	12515	2910	9605	13'	39'-6"	130 Gal.	50&40 Gal.	40 Gal.	60#
40TXSG	18000	13980	3100	10880	13'	43'-4"	130 Gal.	40&40 Gal.	45 Gal.	60#

Fiberglass-Laminated, Aluminum-Framed



Aluminum Framed, Vacuum Bonded

Eclipse RV Sponsoring the HOTTEST Off-Road Superstars!

SUPERCROSS



STELLAR

2 JEREMY McGRATH
facebook.com/eclipsev

eclipsevmfg.com

MOTOCROSS

RACING



WWW.ECLIPSERVMFG.COM

WWW.UTVWOLFPACK.COM



STELLAR

Manufactured by Eclipse Recreational Vehicles, Inc.
3016 Kansas Ave., #14
Riverside, CA 92507
(951) 684-6868
www.EclipseRVMfg.com



All product data, graphics and photography in this brochure were as accurate as possible at press time. Subsequent refinements during the model year may be evident in the actual product. Eclipse RV, Inc. reserves the right to change prices, colors, materials, equipment and specifications without notice - as well as to add, modify or discontinue models shown in promotional materials and/or on its website. Unloaded vehicle weight and carrying capacities will vary upon optional equipment.

Your Local Eclipse Dealer is: